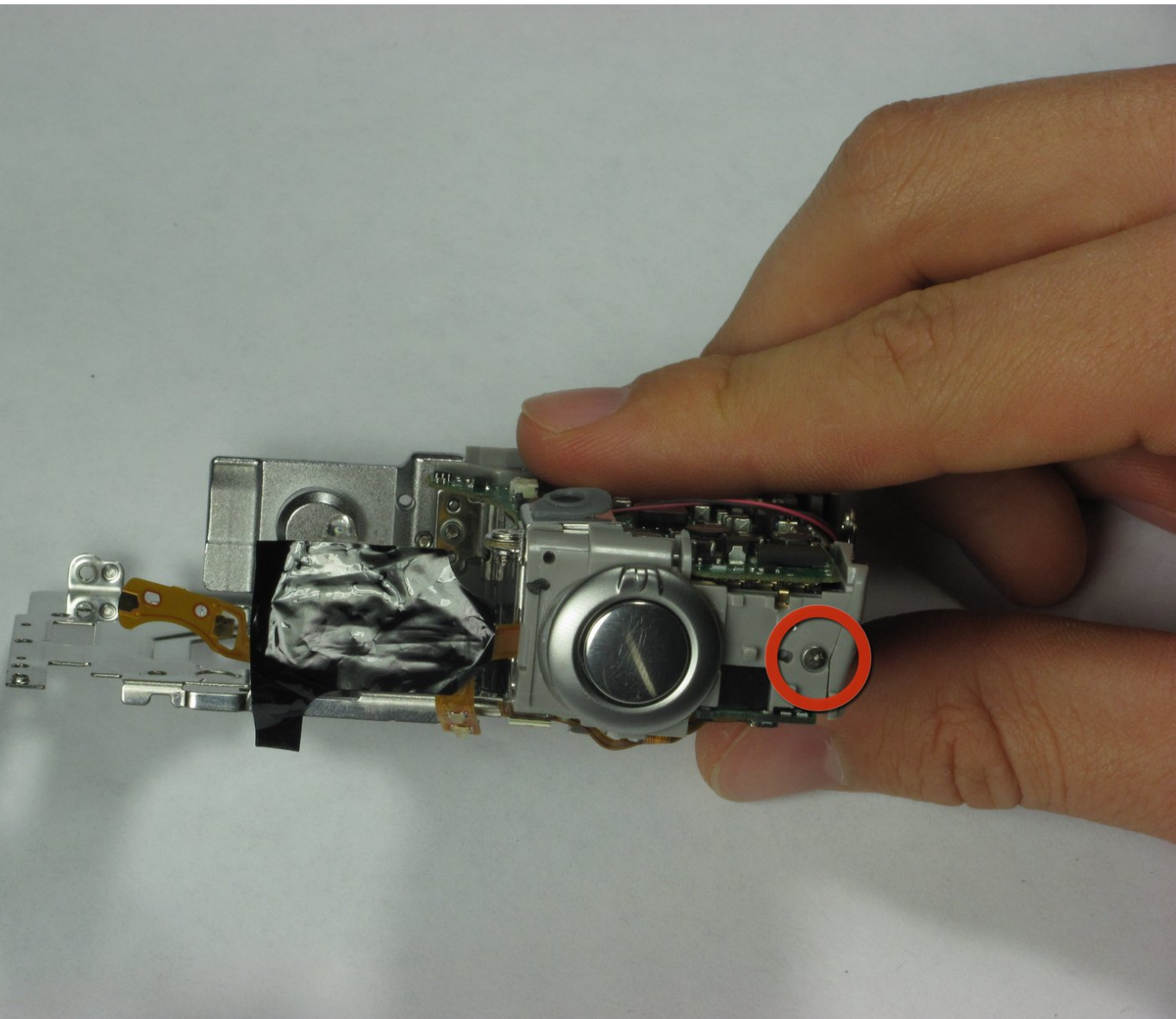




# Canon PowerShot SD850 IS Motherboard Replacement

Written By: Peter Tran



---

# INTRODUCTION

Use this guide to remove a broken Motherboard from your Canon PowerShot SD850 IS.

---



## TOOLS:

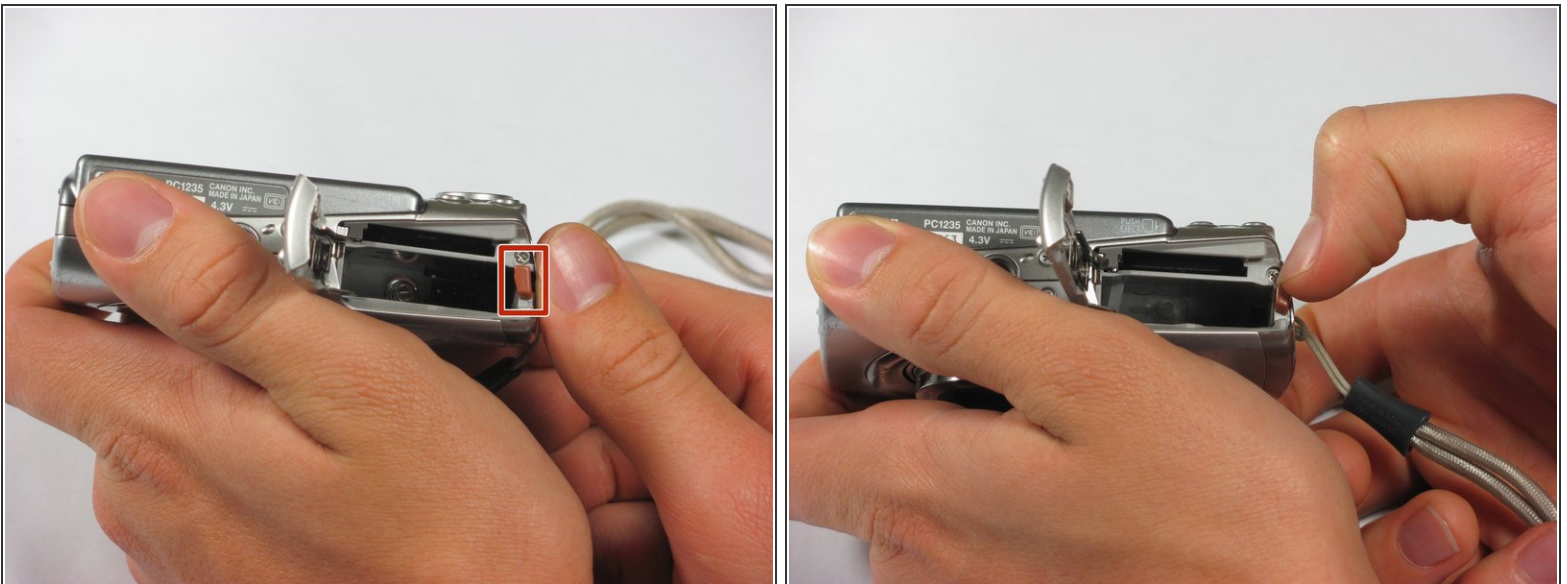
- [iFixit Opening Tools](#) (1)
  - [Tweezers](#) (1)
  - [Phillips #00 Screwdriver](#) (1)
  - [Flathead 3/32" or 2.5 mm Screwdriver](#) (1)
  - [Spudger](#) (1)
-

## Step 1 — Battery



- Slide the light grey tab toward the edge of the camera using your fingernail.
  - Pull the light grey tab up to open the door.
- ⓘ These photos do not show the camera's memory card or battery, which should be visible inside.

## Step 2



- Slide the small brown tab toward the edge of the camera using your fingernail.
- Let go of the brown tab when the battery pops up.
- Grab battery and pull straight up to remove from holder.

✦ When inserting the battery, orient it so that the terminals connect.

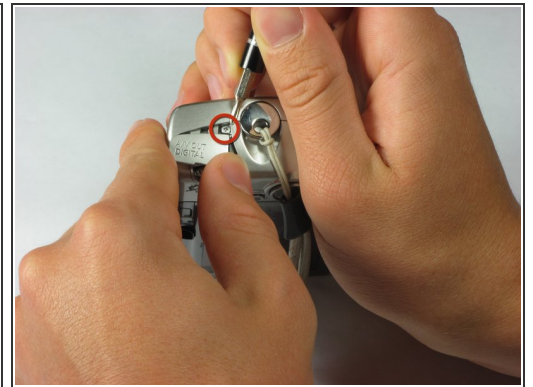


### Step 3 — Case



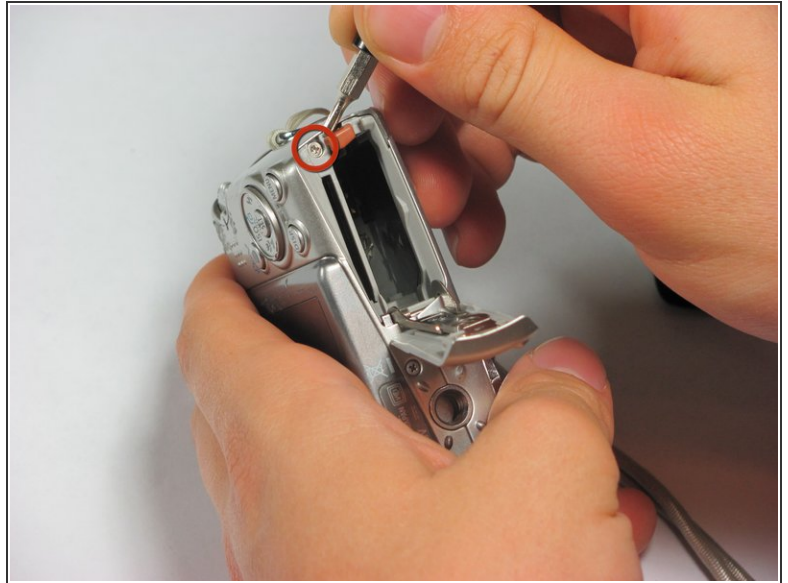
- Remove the following 4 screws:
  - Two 2.8 mm Phillips #00 at the bottom of the camera.
  - Two 2.75 mm Phillips #00 on the opposite side of the wrist strap.

### Step 4



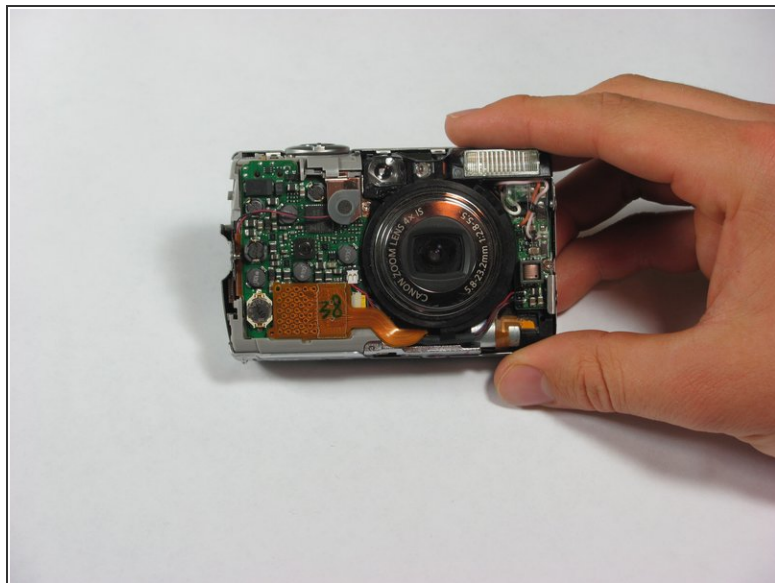
- Open the A/V OUT DIGITAL flap on the side of the wrist strap.
- Remove the 2.75 mm Phillips #00 under the A/V OUT DIGITAL flap on the side of the wrist strap.

## Step 5



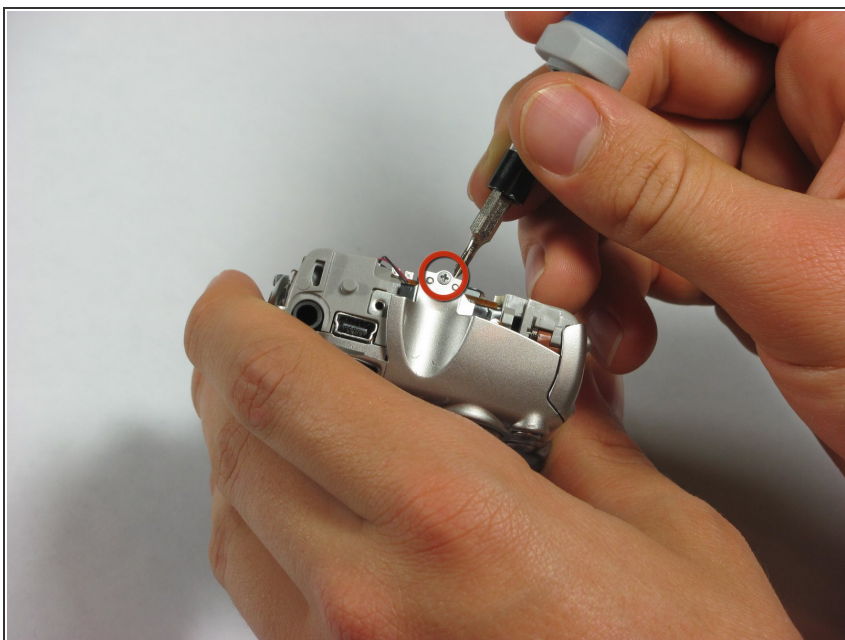
- On the bottom of the camera, use your fingernail to slide the light gray tab towards the edge of the camera.
- Slide light gray door and pull up to open the door.
- Remove the 8.35 mm Phillips #00 next to the brown tab that holds the battery.

## Step 6



- Gently pull the front cover straight out from the camera. This will expose the wiring on the front of the camera.

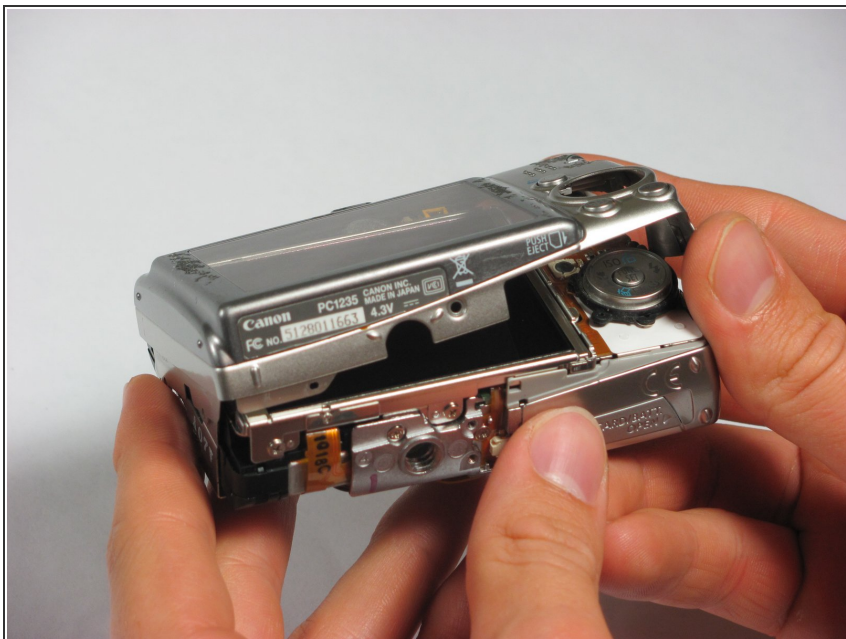
## Step 7



- Remove the 2.75 mm Phillips #00 next to A/V OUT DIGITAL.

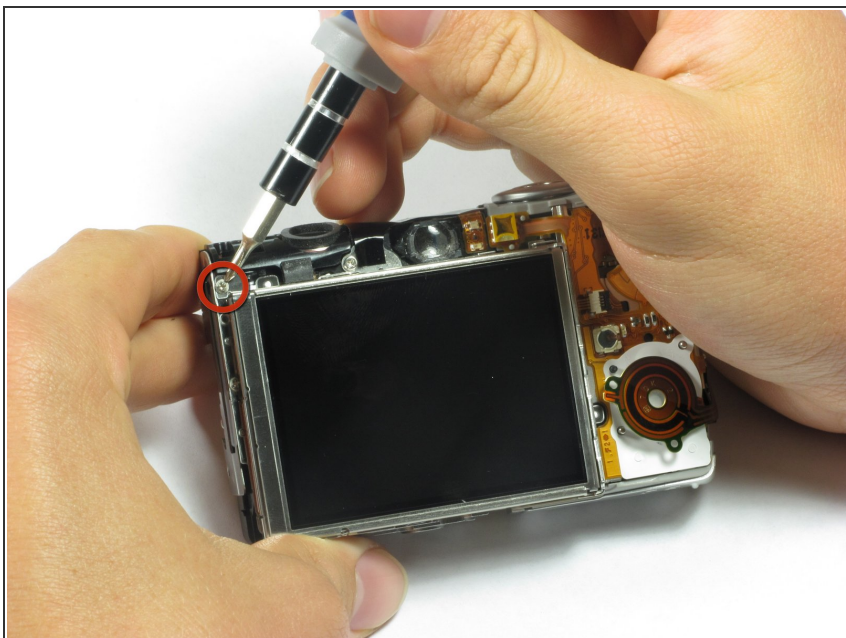


## Step 8



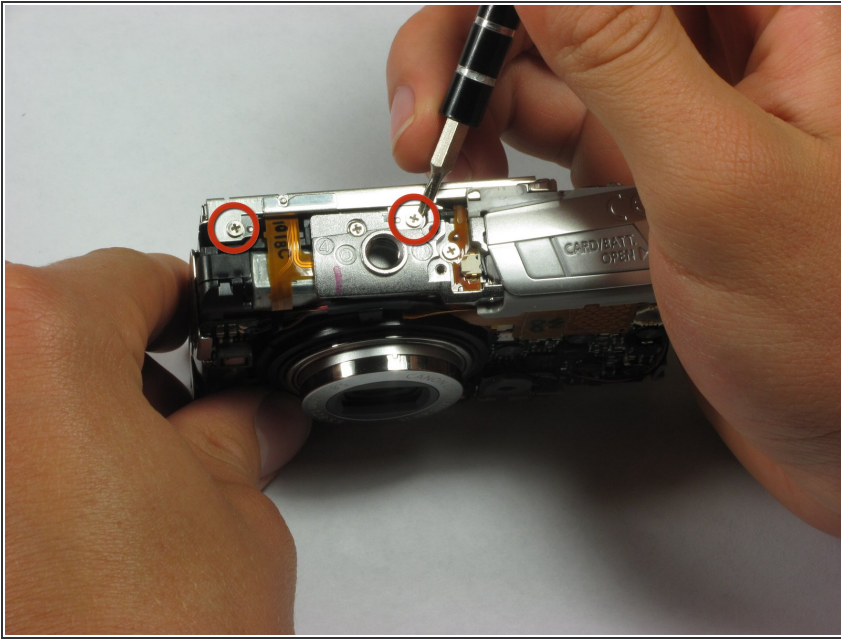
- Slide the back casing (with the screen protector) off to reveal the LCD and back wiring.

## Step 9 — LCD Screen



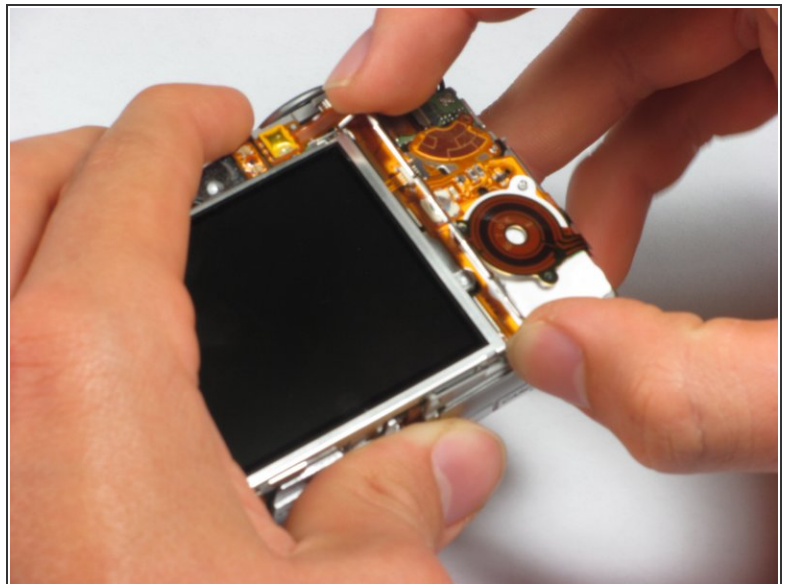
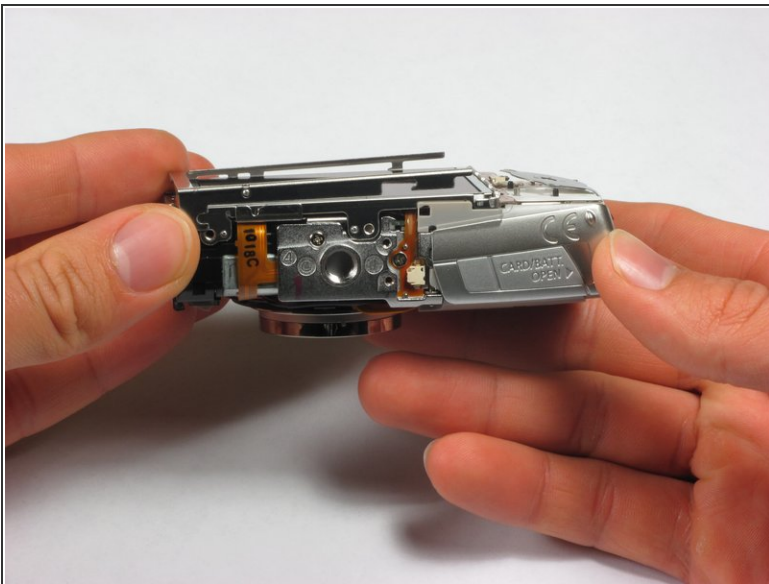
- Remove the 1.75 mm Phillips #00 located at the top left of the LCD screen.

## Step 10



- Remove the two 3.4 mm Phillips #00 located at the bottom of the camera.

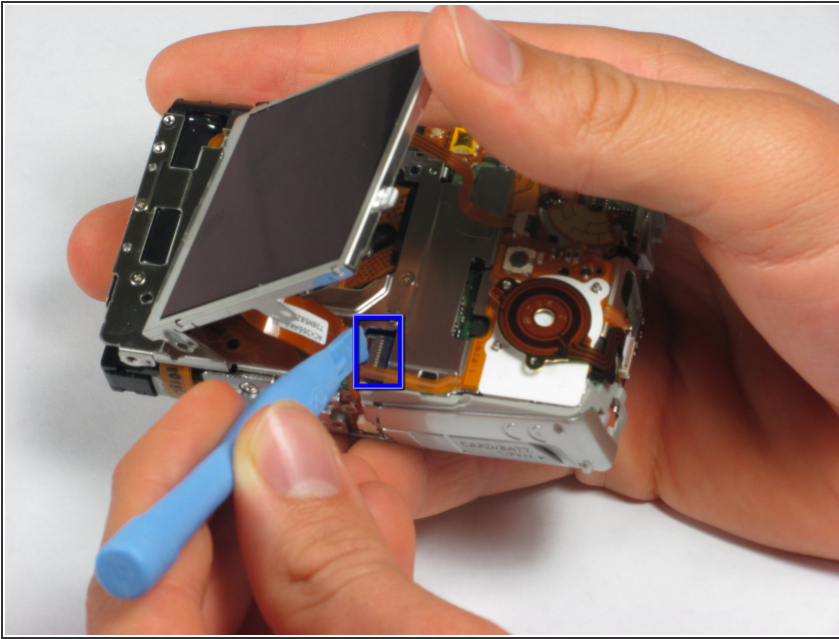
## Step 11



- Remove the two metal frames that hold the LCD panel in place.



## Step 12



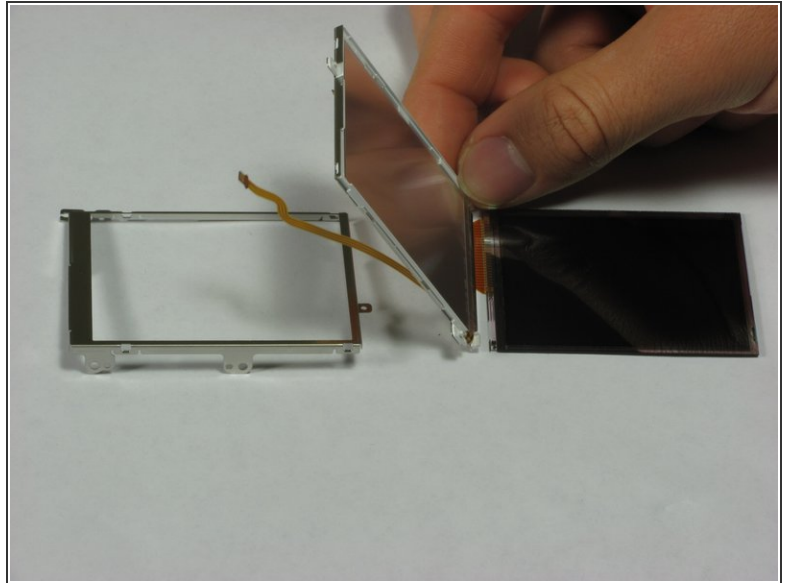
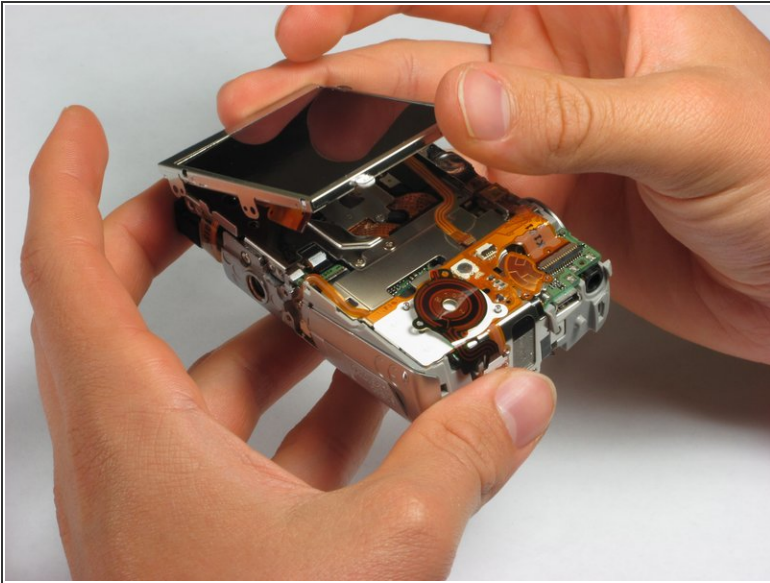
- The LCD screen should now only be attached by two LCD data cables.
- Lift the screen from the left side and use a spudger or a small flat head screwdriver to flip the black portion of the connector upward to unlock it.
- Carefully slide the data cable out of the connector.

## Step 13



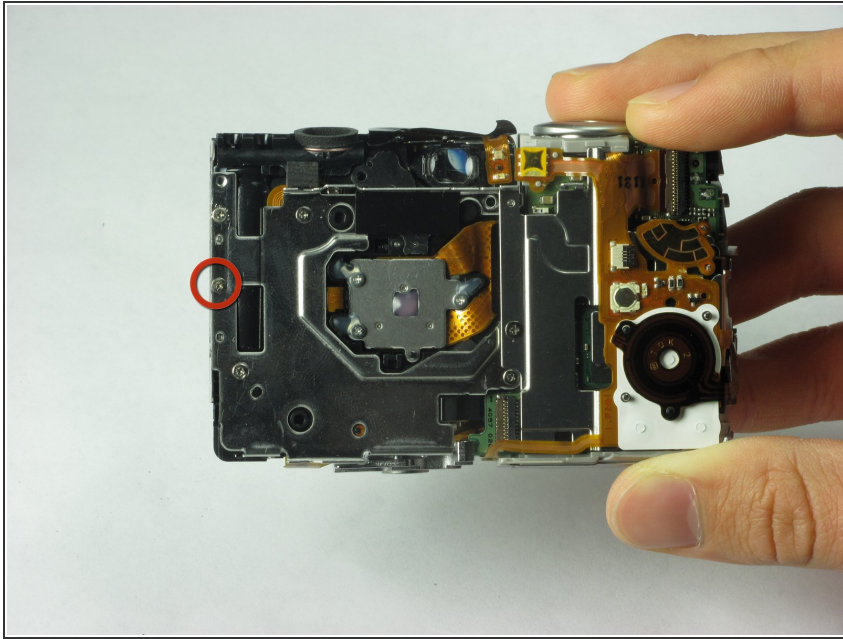
- The LCD should still be connected by the backlight cable.
- To remove the backlight cable, use a spudger or a small flat head screwdriver to unlock the backlight cable.
- Carefully slide out the backlight cable.
- The LCD screen can now be fully detached from the camera body.

## Step 14



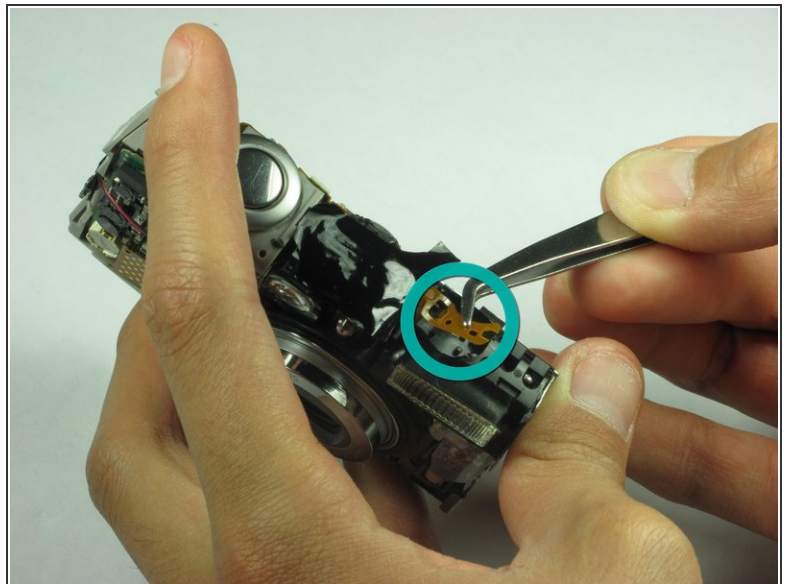
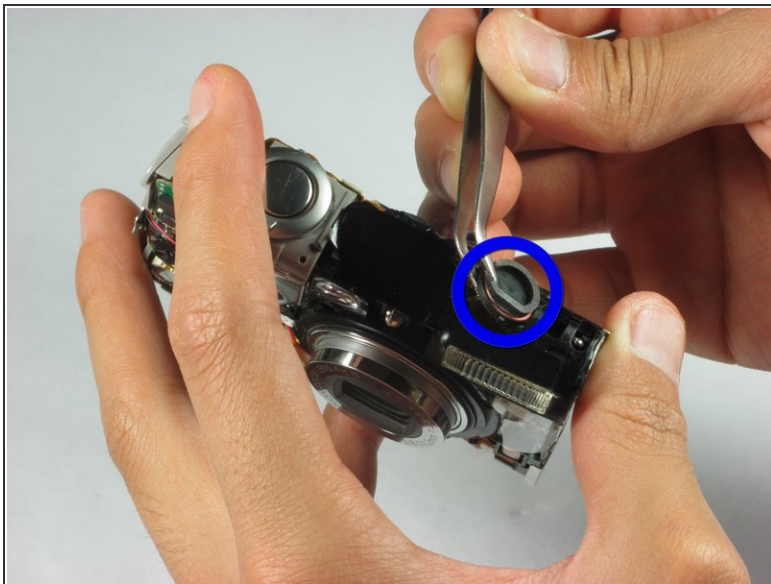
- The LCD screen and housing are now in three pieces:
  - LCD screen
  - LCD screen frame
  - LCD back housing
- The LCD screen itself can now be removed and fixed/replaced.

## Step 15 — Flash Unit



- Remove the 1.85 mm #00 Phillips located on the left side of the camera.

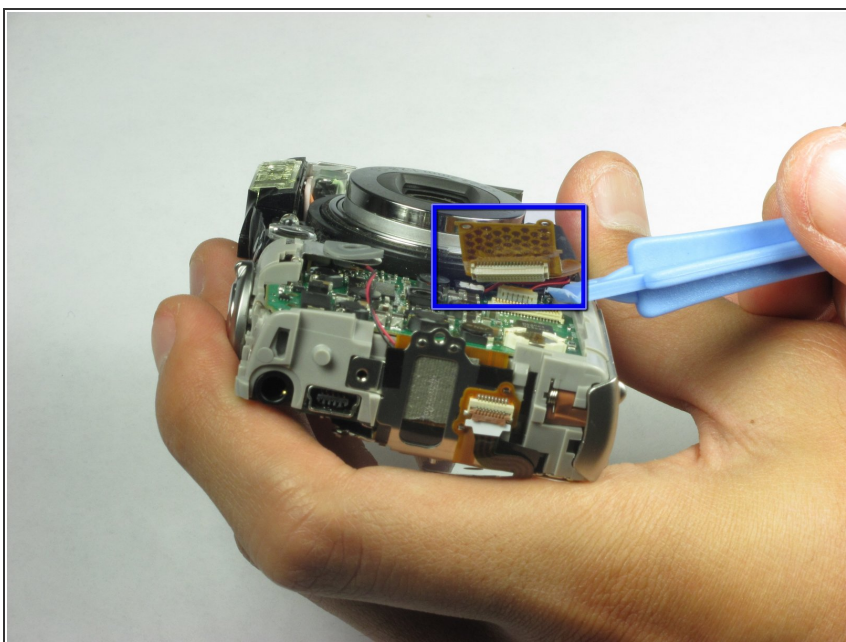
## Step 16



- Use a set of tweezers to remove the speaker located at the top of the camera on the flash unit.
- Next use the tweezers to carefully remove the speaker cable off its respective holders.

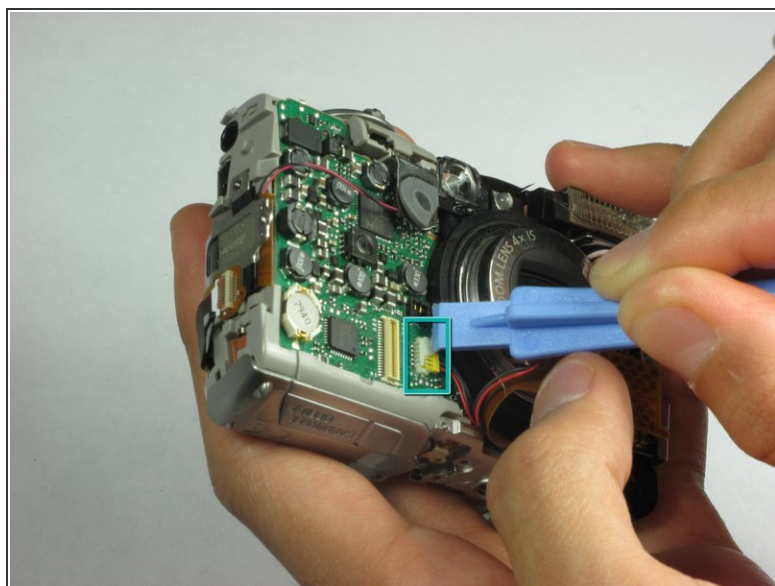
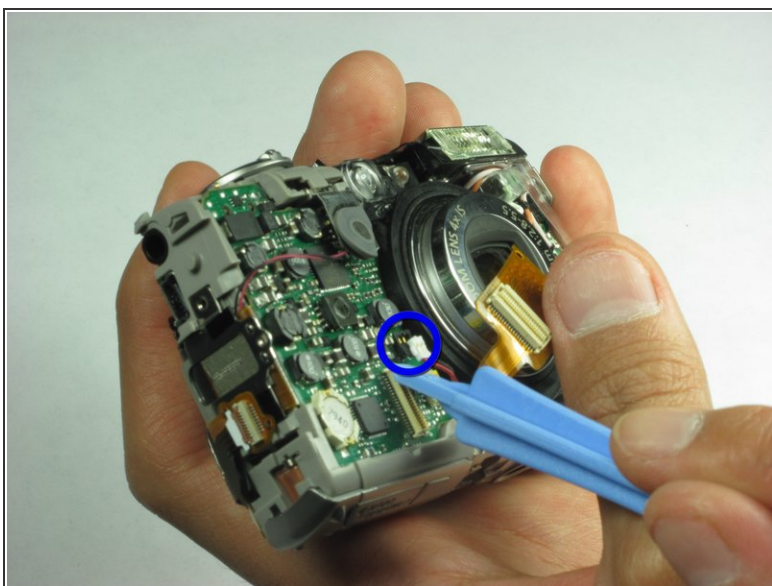


## Step 17



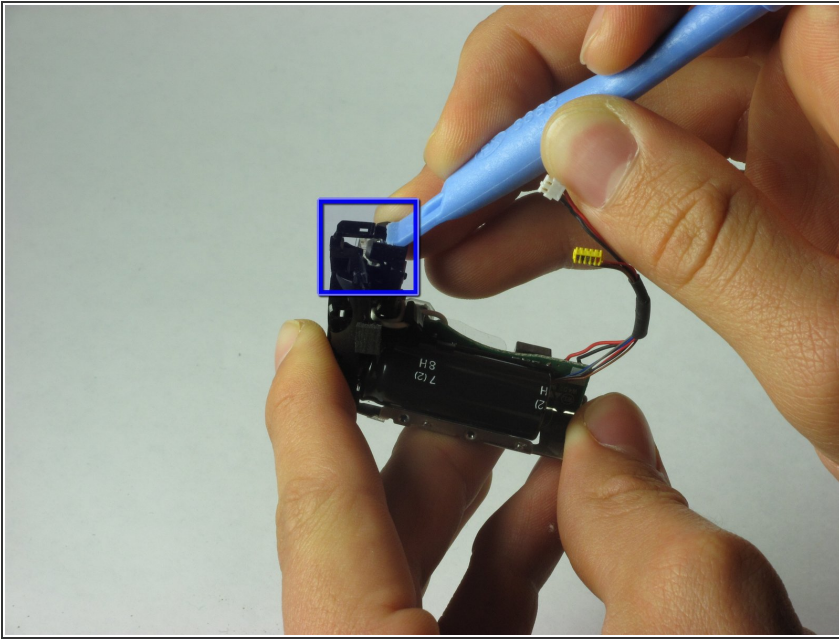
- Use a spudger or a flathead screwdriver to remove the camera lens cable located in the front of the camera.

## Step 18



- Use a spudger or a flathead screwdriver and carefully pry out the first flash cable from the bottom of the cable. The white 2 prong power cable pops UP (use spudger below red/black insertion and put upward pressure). For the yellow one, apply pressure horizontally.
- Next use a spudger or a flathead screwdriver and carefully pry out the second flash cable.

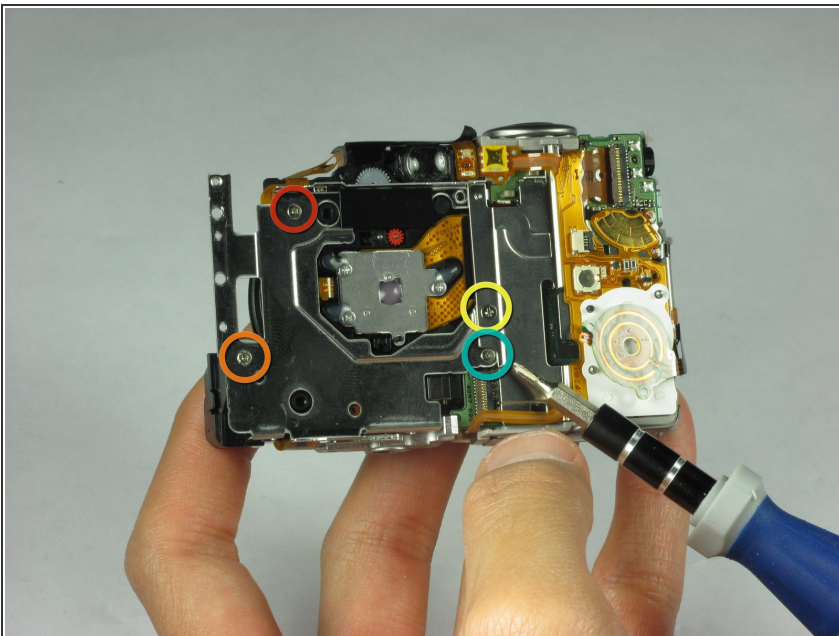
## Step 19



- Gently remove the flash component from the rest of the camera.
- Use a spudger or a flathead screwdriver and carefully pry off the plastic piece on top of the flash unit.
  - The flash unit can now be removed and replaced.

⚠ Be careful not to touch the capacitor attached to the flash unit as it may still be holding a charge!

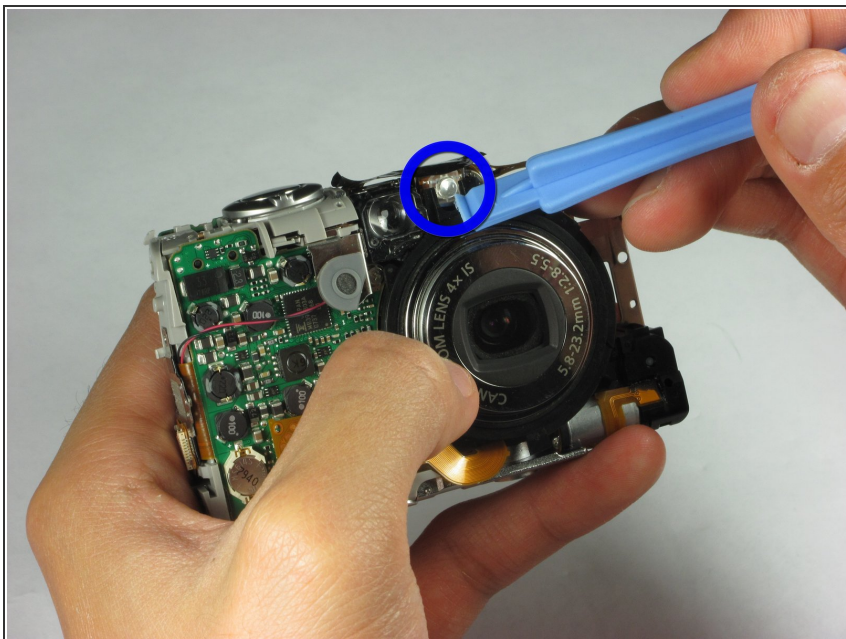
## Step 20 — Camera Lens



- Remove four screws located on the back of the camera:
  - 6.15 mm #00 Phillips
  - 2.75 mm #00 Phillips
  - 2.15 mm #00 Phillips
  - 2.7 mm #00 Phillips

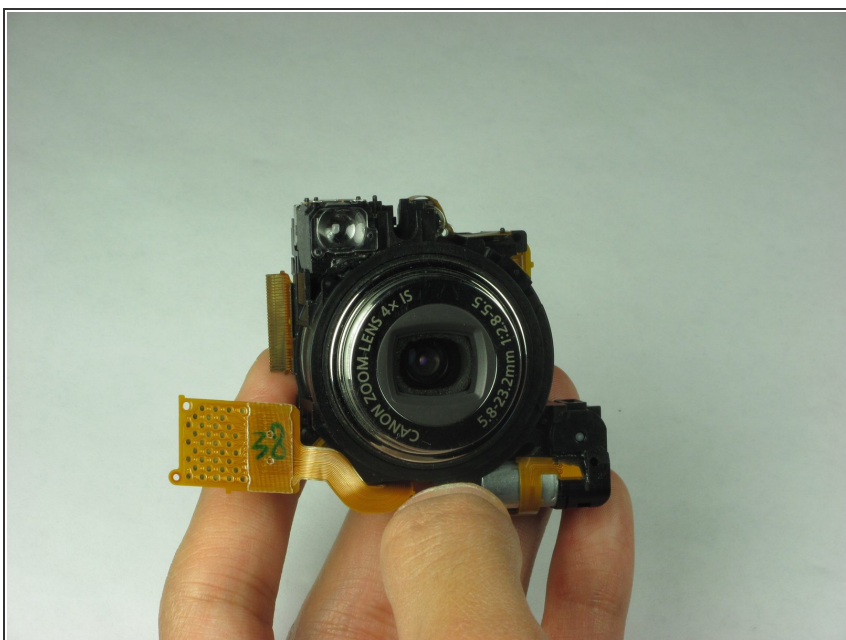


## Step 21



- Use a spudger or a flathead screwdriver and carefully pry out the bulb located in the front of the camera on top of the camera lens.

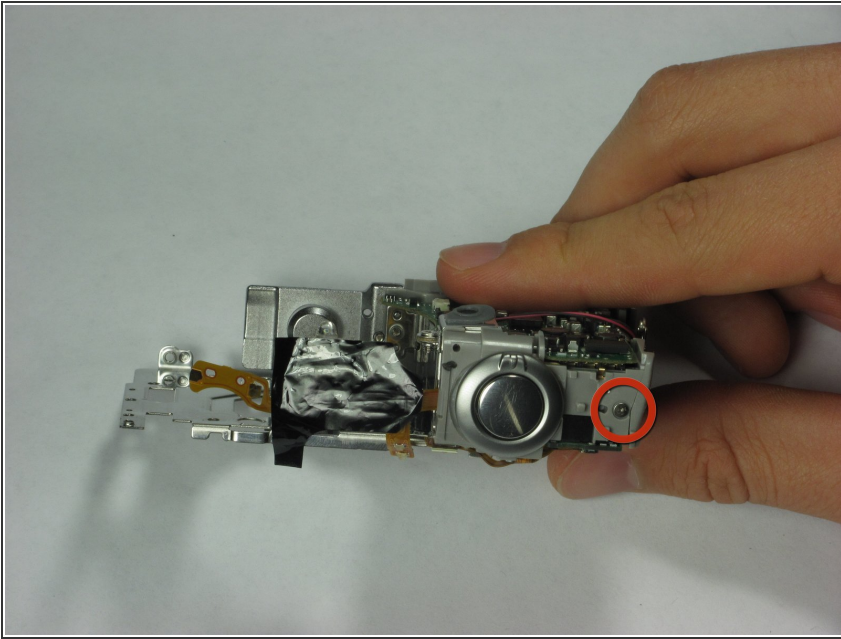
## Step 22



- Gently remove the camera lens from the rest of the camera.

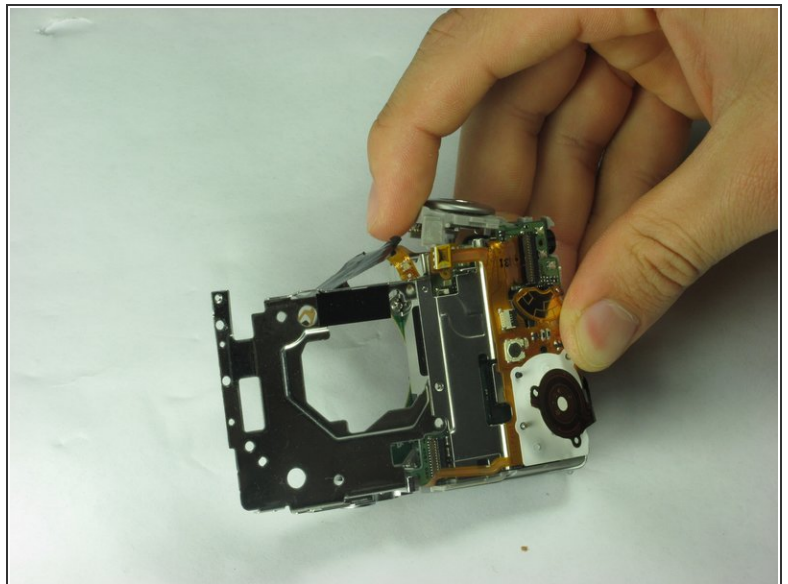
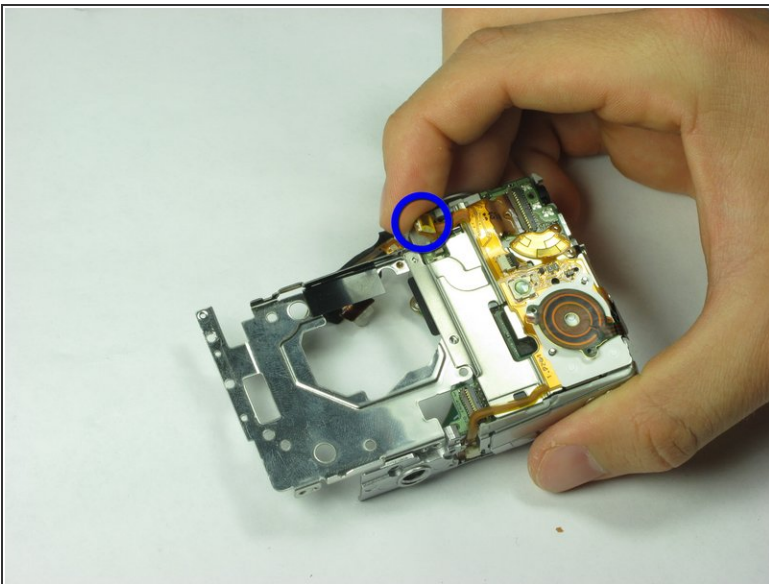


## Step 23 — Motherboard



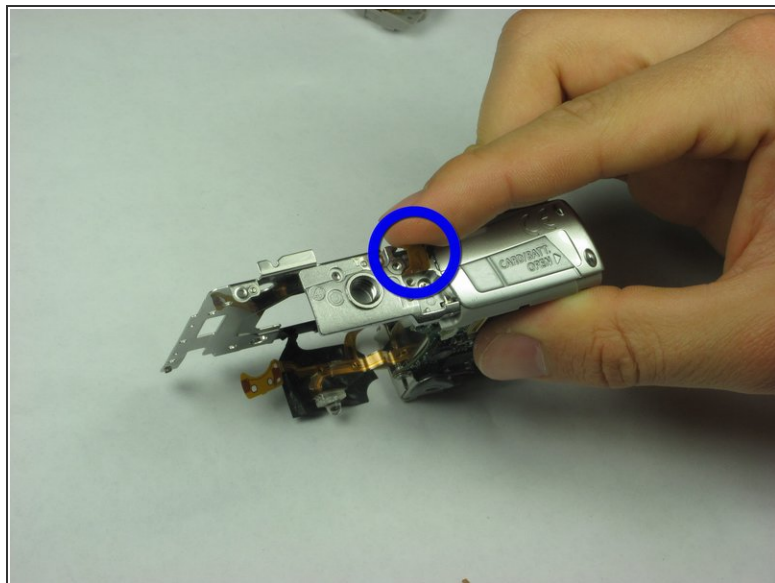
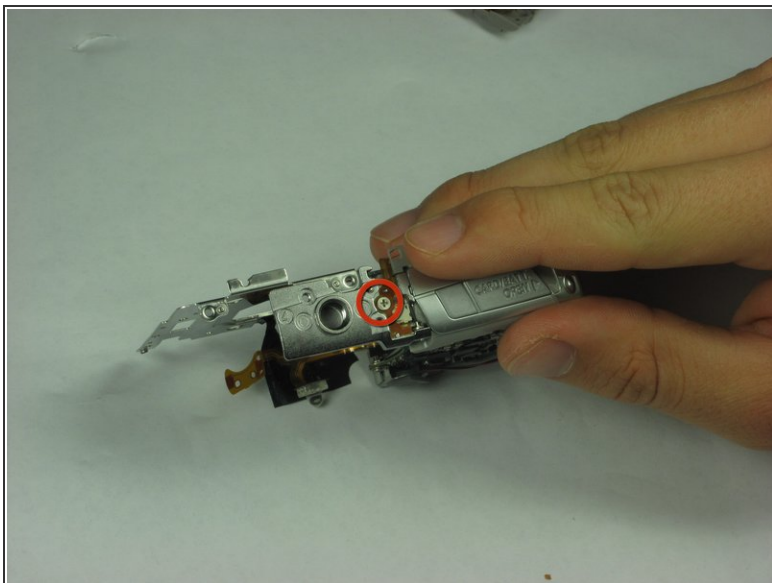
- Remove the 2.6 mm Phillips #00 located near the shutter release button.

## Step 24



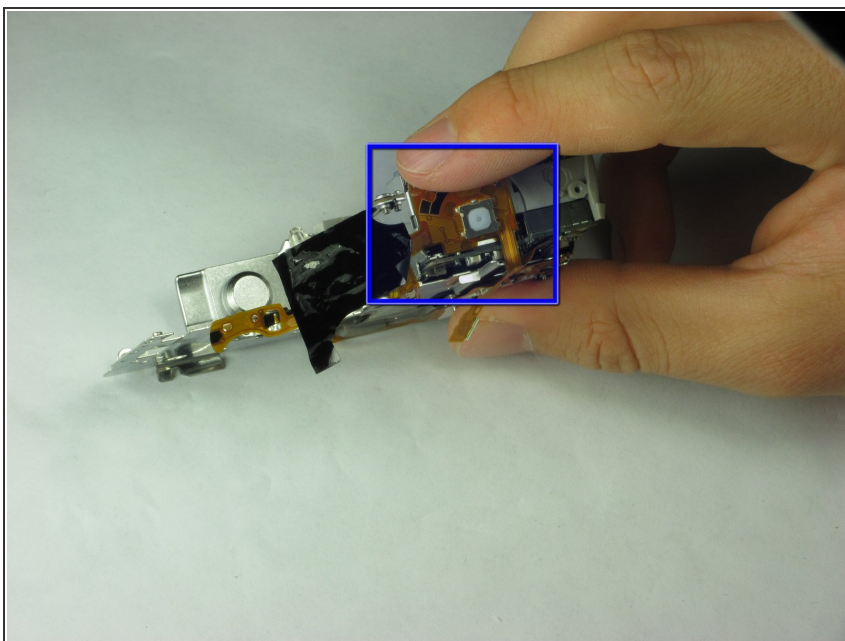
- Use a prying device or your fingers to release the ribbon from its holder.
- Gently remove the shutter release component from the camera.

## Step 25



- Remove the 3.4 mm Phillips #00 located under the camera.
- Next use a prying device or your fingers to release the power trigger cable from its holder.

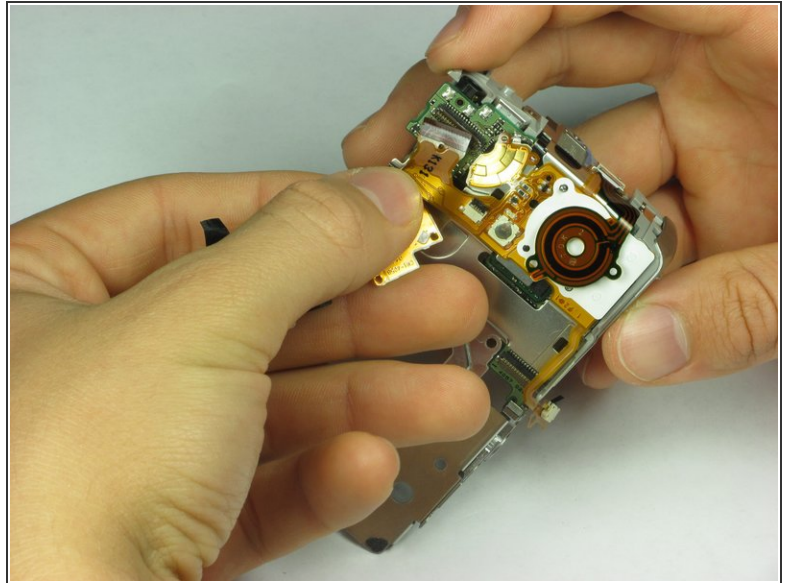
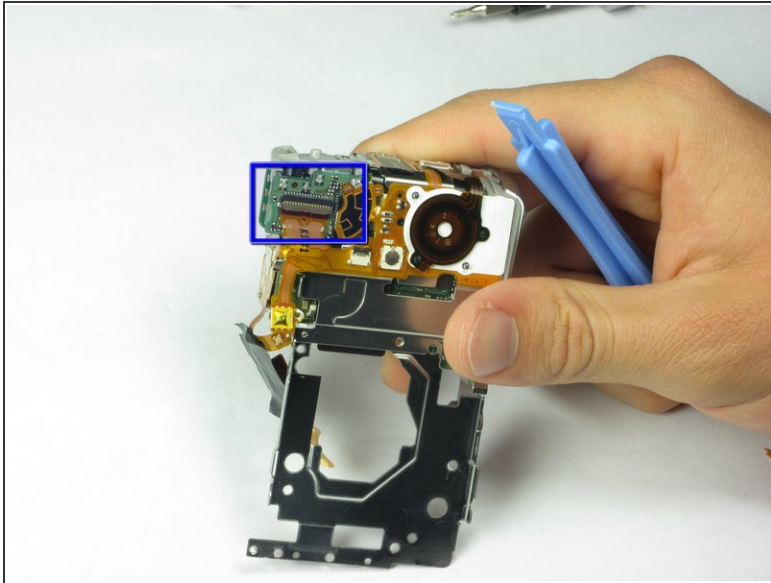
## Step 26



- Use a prying device or your fingers to release the ribbon from their respective holders located at the top of the camera.

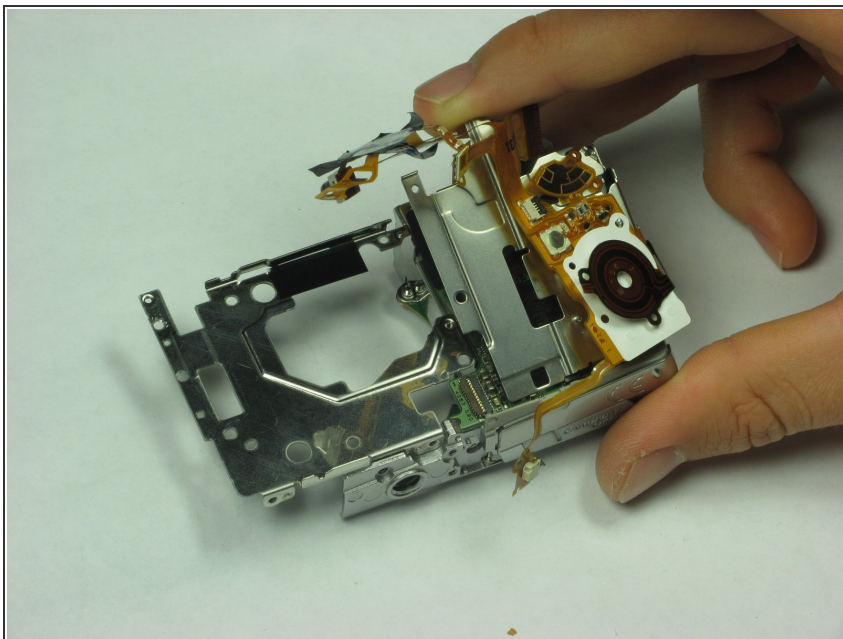


## Step 27



- Use a spudger or a flathead screwdriver to unlock the ribbon located at the back of the camera.
- Then gently slide out the ribbon.

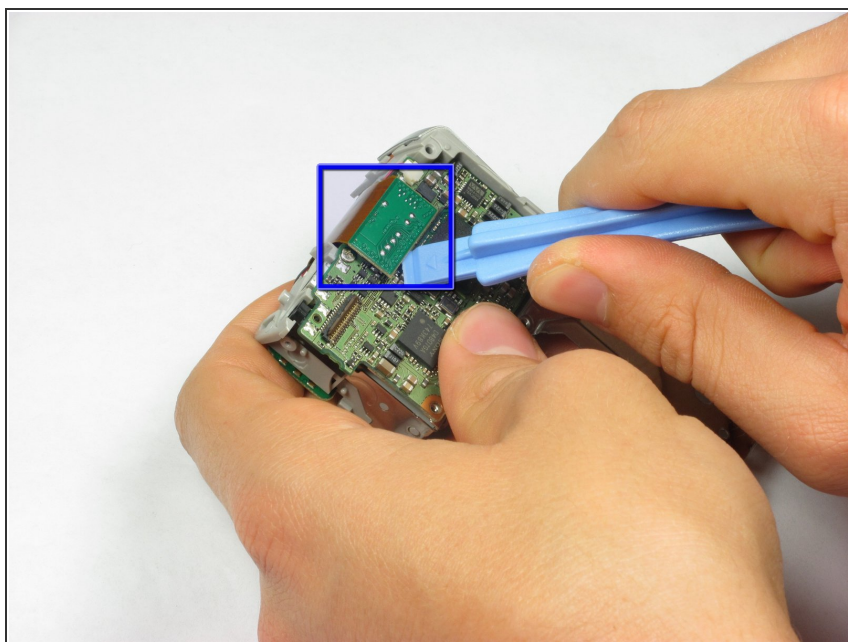
## Step 28



- The whole ribbon and metal casing can now be easily removed from the remains of the camera.

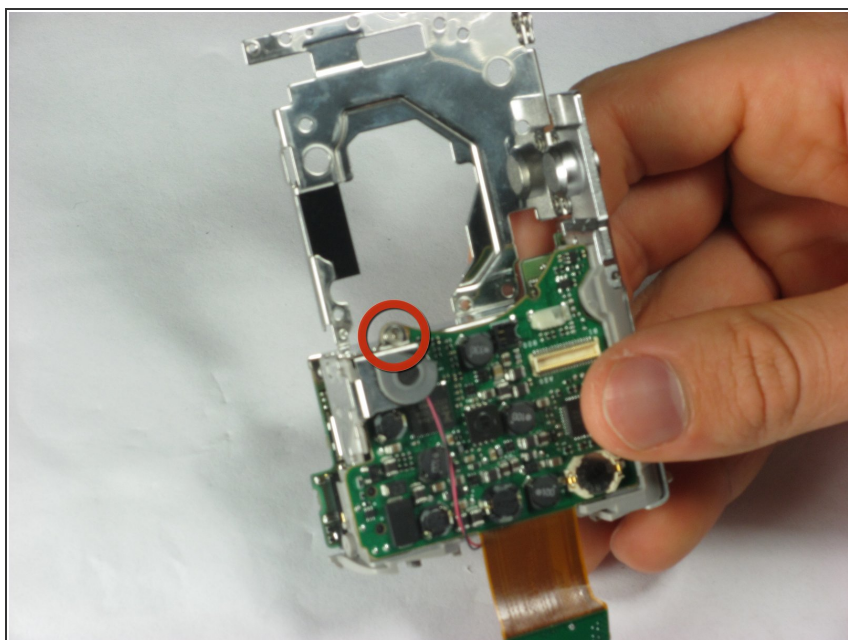


## Step 29



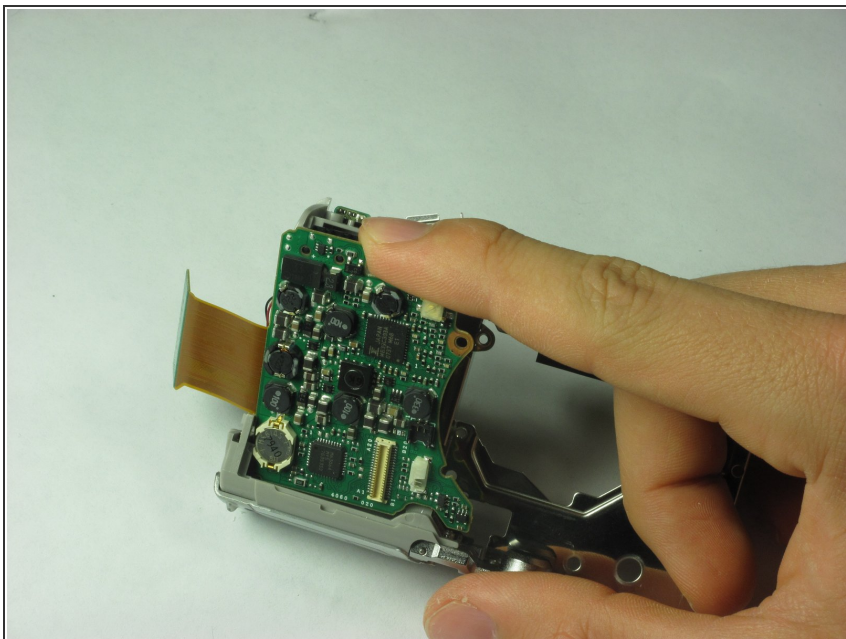
- Use a spudger or a flathead screwdriver to release the motherboard cable.

## Step 30



- Next remove the 3.4 mm Phillips #00 located in front of the camera. wisdom here.

## Step 31



- Now the motherboard can be gently removed from the metal casing.

To reassemble your device, follow these instructions in reverse order.