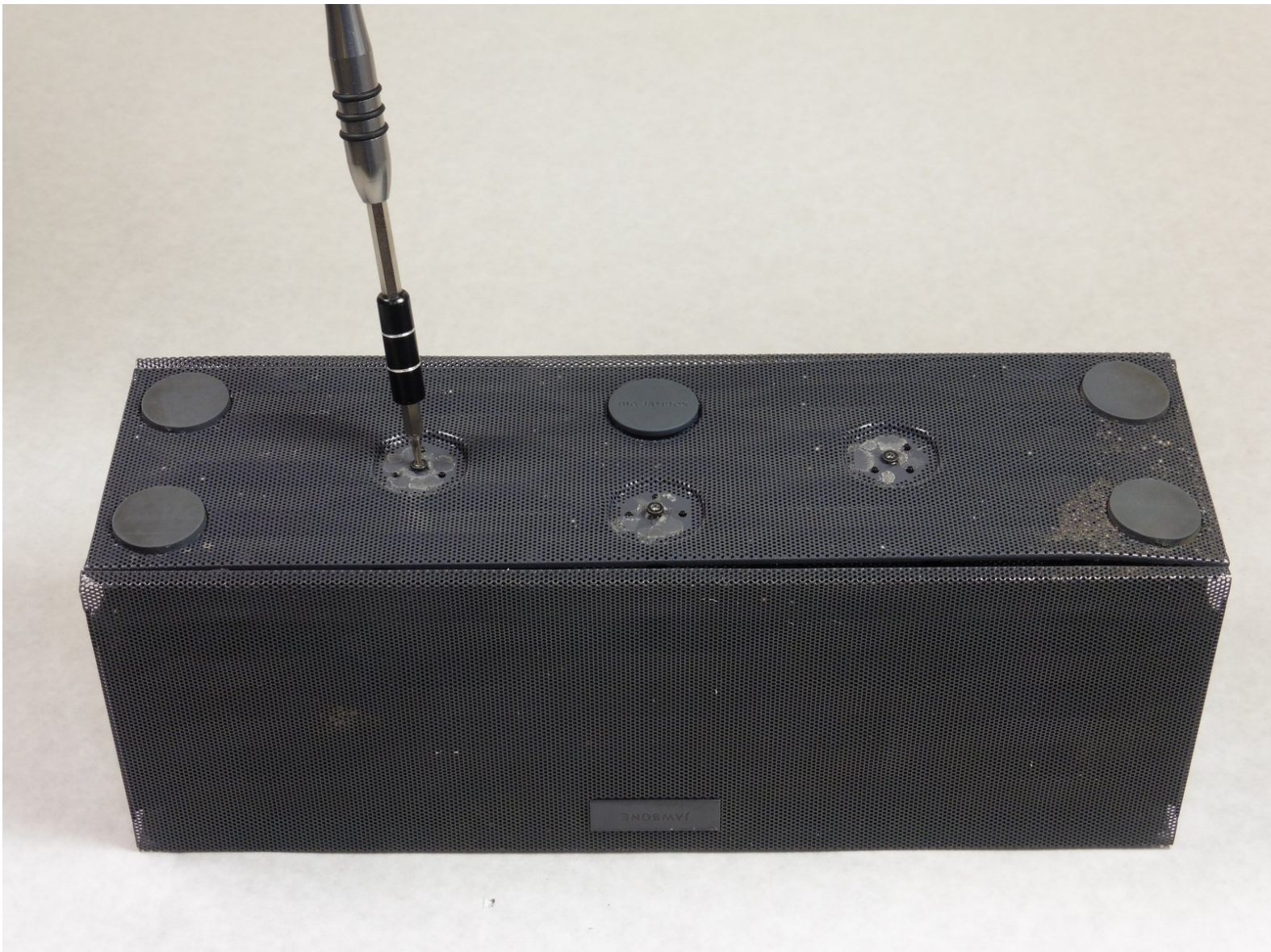




# Jawbone Big Jambox Outer Case Replacement

Prerequisite Only. How to take apart Jawbone Big Jambox for replacement of key components.

Written By: Abby Cybula



## INTRODUCTION

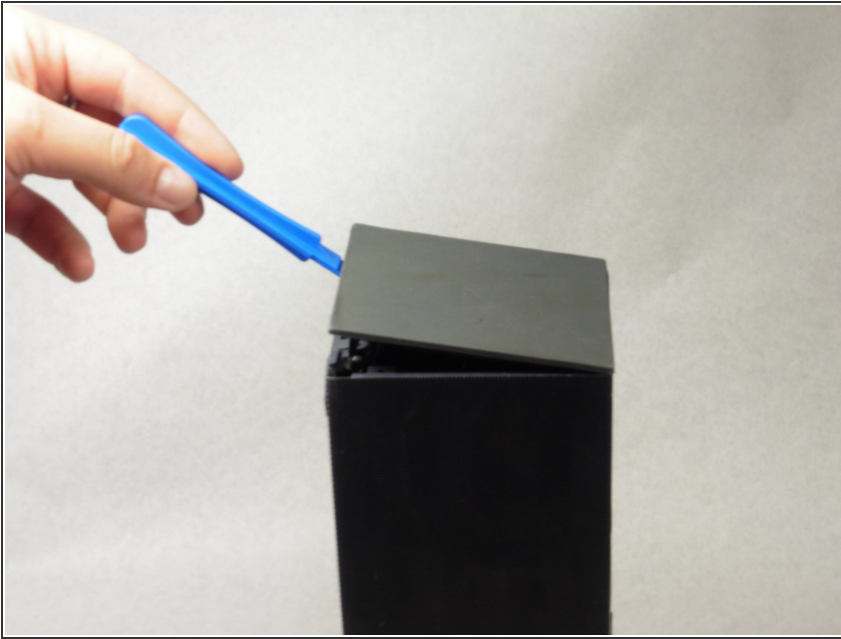
Step-by-step guide to take apart Jawbone Big Jambox to expose the inside guts for certain part replacements. This guide will require unscrewing and prying at the device.

---

### TOOLS:

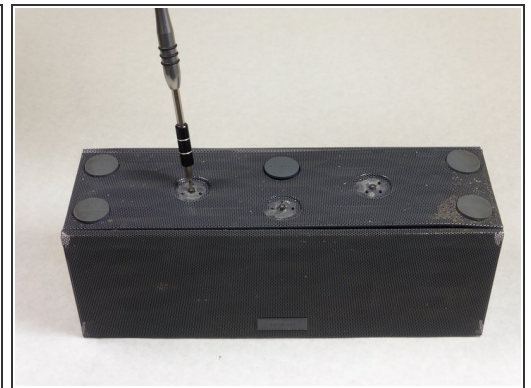
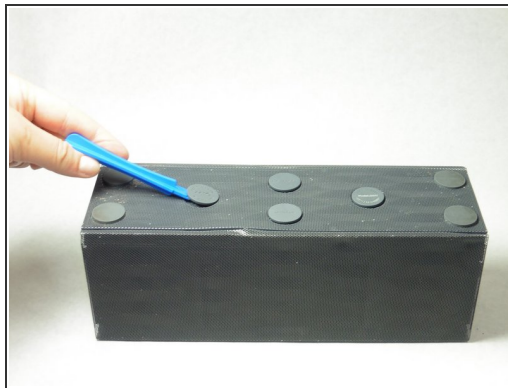
- [iFixit Opening Tools](#) (1)
  - [T6 Torx Screwdriver](#) (1)
-

## Step 1 — Outer Case



- Remove both end caps by putting a plastic opening tool in the center of the seam. Work around the edges to pry the end caps off completely.
- ⓘ Due to interior clips holding the end caps in place, use caution when applying force.

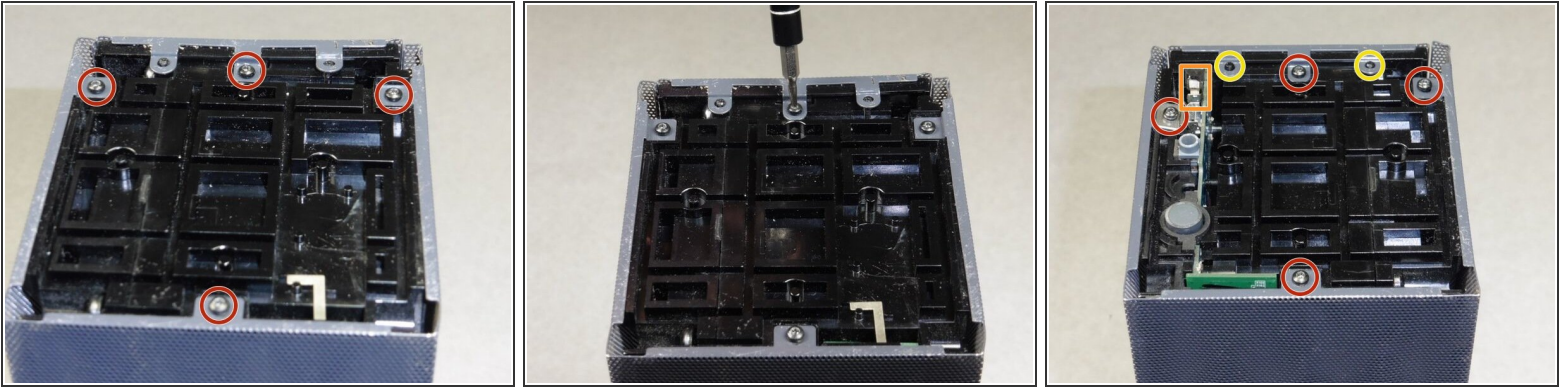
## Step 2



- Turn the Jambox upside down. Peel the indicated rubber tabs off, using a plastic opening tool if necessary.
- ⓘ You may want to only take the tabs half way off to avoid re-gluing when reassembling.
- Remove the three T6, 7.0 mm screws under each rubber tab.
- ✦ Because the screws are a different length, set the screws aside.

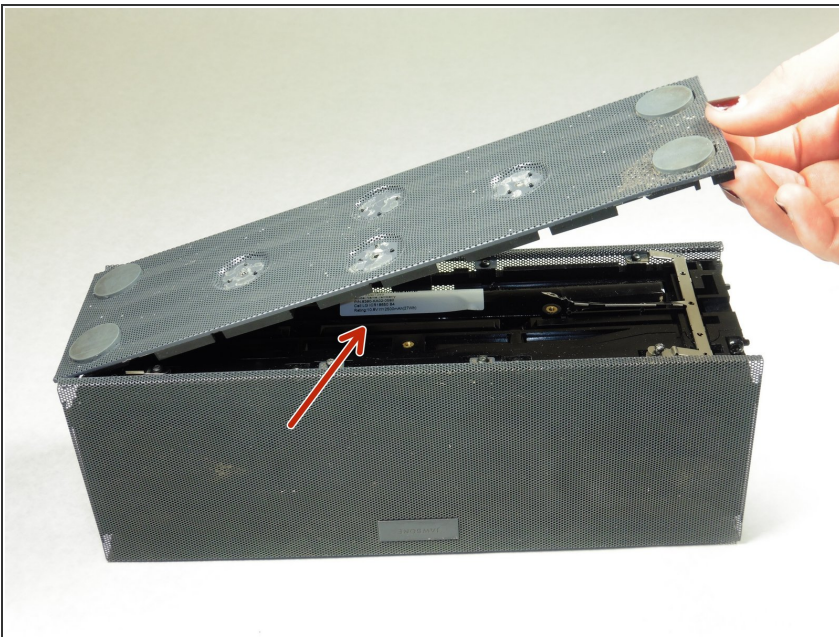


### Step 3



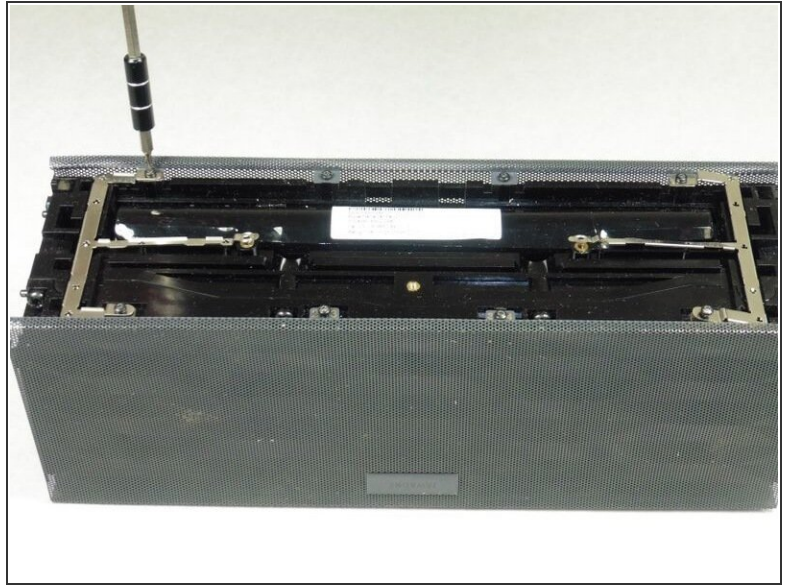
- With the Jawbone logo facing towards you and with correct orientation, place the Jambox with the left end cap facing upward.
- Unscrew indicated T6 9.7 mm screws.
- Gently loosen the tabs from their anchor points so the bottom may be removed.
- Flip the Jambox so the other end cap is facing up. The USB cable is on this side (metal grounding clip, indicated in orange). Repeat the above two steps.

### Step 4



- Pry up the bottom panel by lifting from the device.
- Pull the bottom up. This may take a bit of force as the bottom is glued to device.
- Once removed, the battery will now be visible.

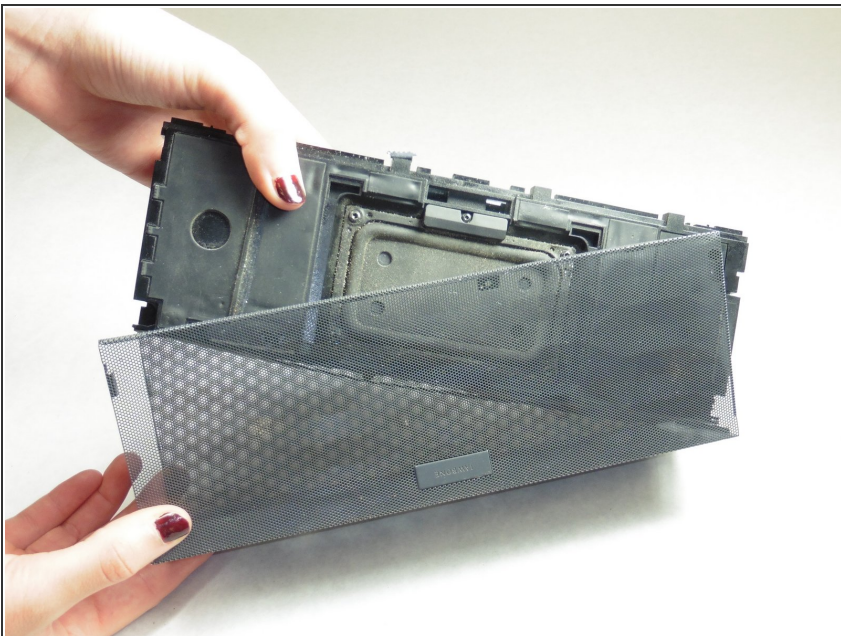
## Step 5



**i** Before unscrewing, take a picture of the top view. That way, when you're reassembling the device, you'll know the orientation of the metal grounding plates.

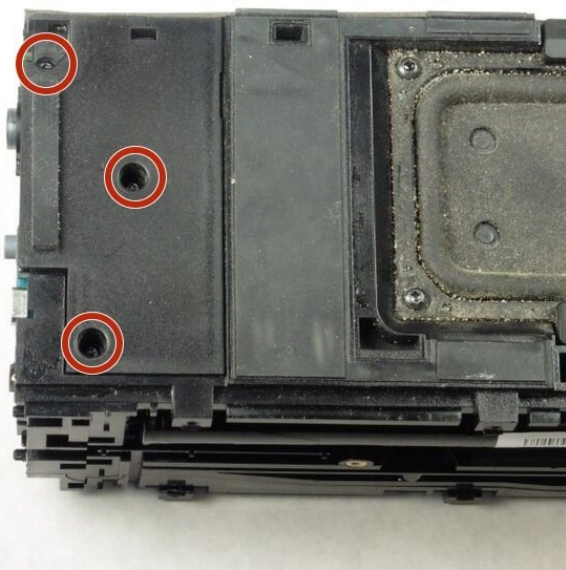
- Unscrew the eight indicated T6 9.8 mm screws. Remove metal grounding plates.

## Step 6



- Once all eight screws are removed, pry the sides of the Jambox to lift the body from it's shell.

## Step 7



- With the battery facing forward, remove the three indicated T6 9.5 mm screws.
- Once the screws are removed, lift up the small plastic plate, revealing the auxiliary board underneath.

To reassemble your device, follow these instructions in reverse order.