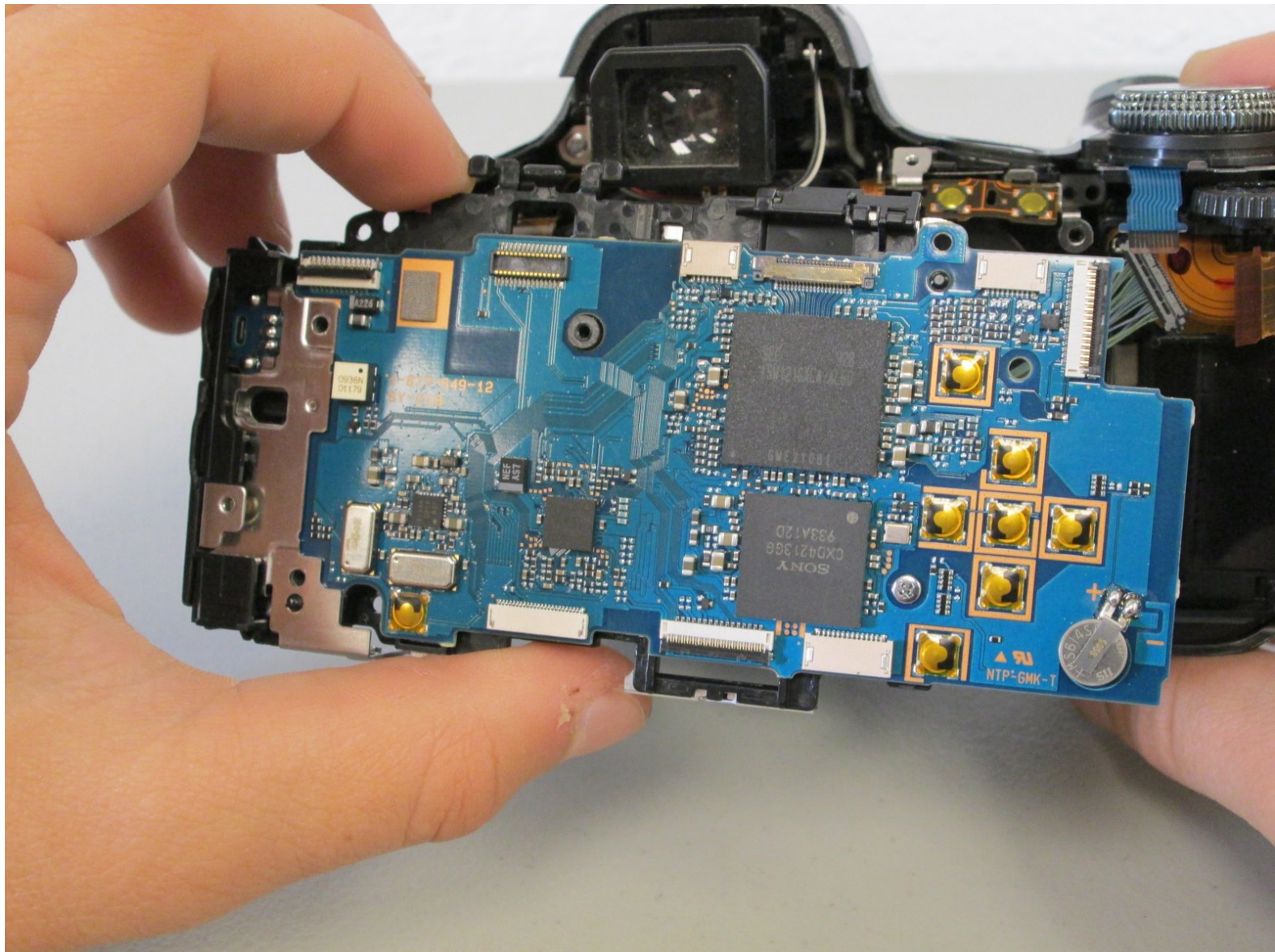




# Sony Cyber-shot DSC-HX1 Motherboard Replacement

Use this guide to remove or replace the central motherboard for the Sony Cyber-shot DSC-HX1.

Written By: Brianna Greenlaw



---

## INTRODUCTION

To remove or replace the motherboard, you must disassemble a majority of the camera. Make sure to keep your screws separated and labeled.

---



### TOOLS:

- [Phillips #00 Screwdriver](#) (1)
  - [iFixit Opening Tools](#) (1)
-

## Step 1 — Battery



- ⚠ Make sure the surface you place the screen on is clean of debris and dust. Otherwise you risk scratching your screen.
- Place the camera with the bottom facing you and the lens facing up.

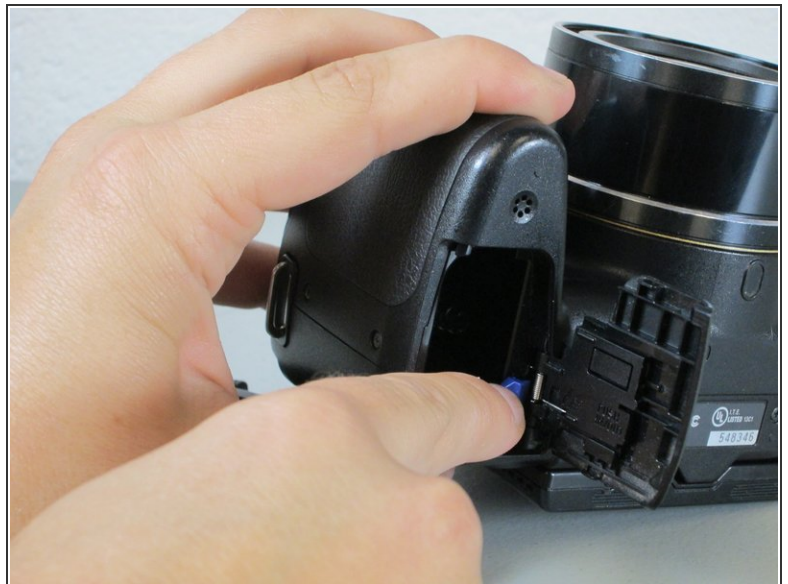


## Step 2



- Push down and away from the camera to the left on the indicated indentation in the battery cover. The compartment should slide open as shown.

## Step 3



- Push the blue tab towards the camera body to the right, while simultaneously pulling out the battery.
- ⓘ The battery is not shown here. However, normally the battery would be in the displayed compartment.

## Step 4 — Motherboard



- Close the battery cover by pushing the cover inwards and sliding it to the left to allow more maneuverability when disassembling other parts of the camera.

## Step 5



- Unscrew the four #00 4.0 mm Phillips screws on the bottom of the camera.



## Step 6



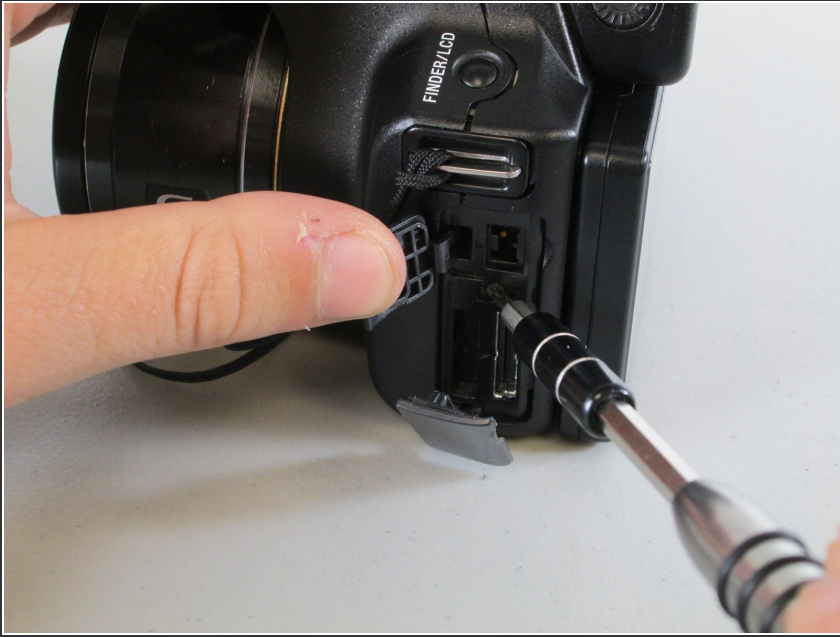
- Remove the two #00 4.0 mm Phillips screws shown on the side of the camera.

## Step 7



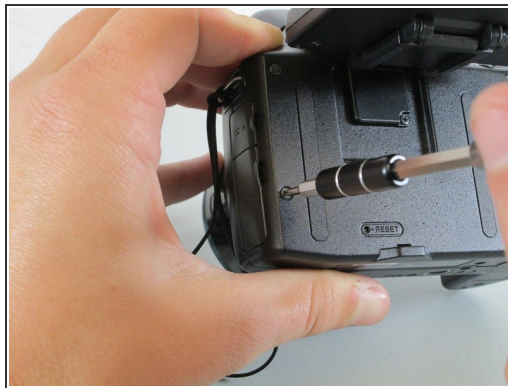
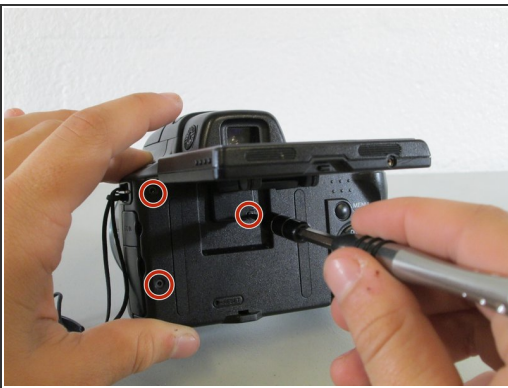
- Unscrew the #00 4.0 mm Phillips screw on the top next to the view finder.

## Step 8



- Pull open the plastic port covers on the side of the camera.
- Remove the revealed #00 4.0 mm Phillips screw.

## Step 9



- Lift the back LCD screen to reveal the back of the camera unit.
- Unscrew the three #00 4.0 mm Phillips screws at the edge and center of the back camera unit.

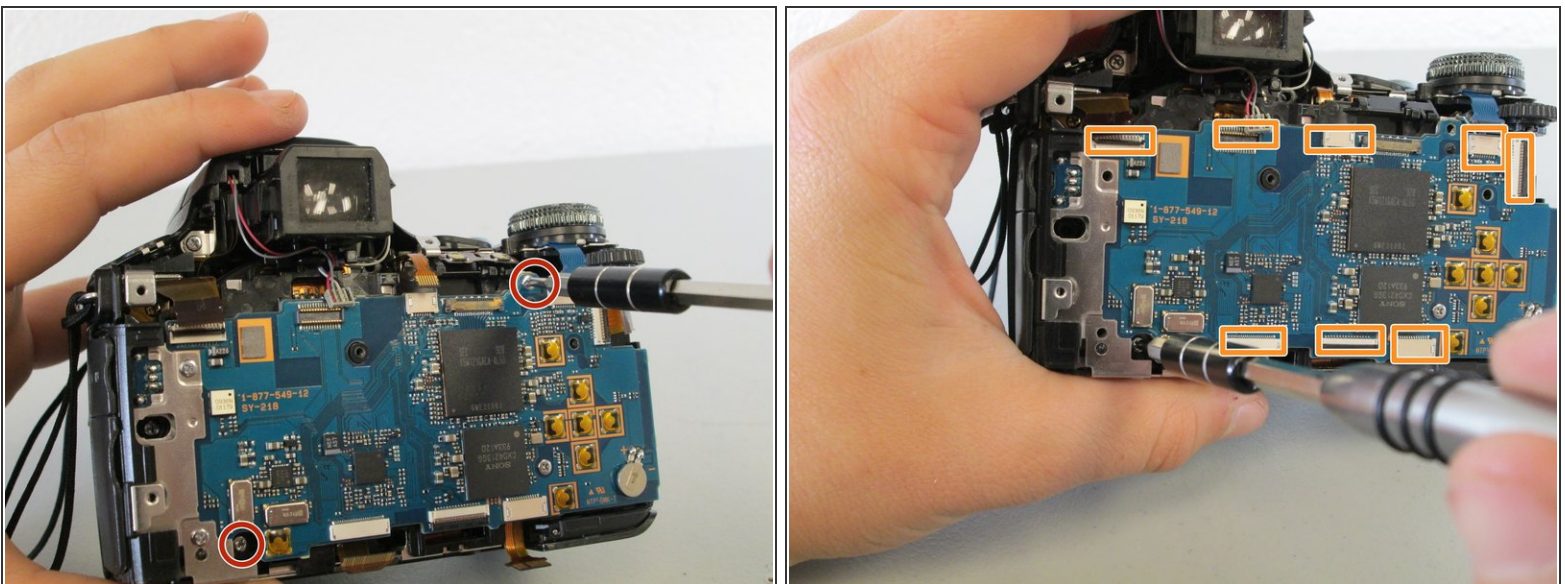


## Step 10



- Using the plastic opening tool, pry apart the bottom of the camera at the line between the four removed screws.
- Place the camera on its lens and use the plastic opening tool to pry at the crack in the case on all four sides of the camera.
- Apply moderate force to the backside of the camera enclosure until the two pieces separate.

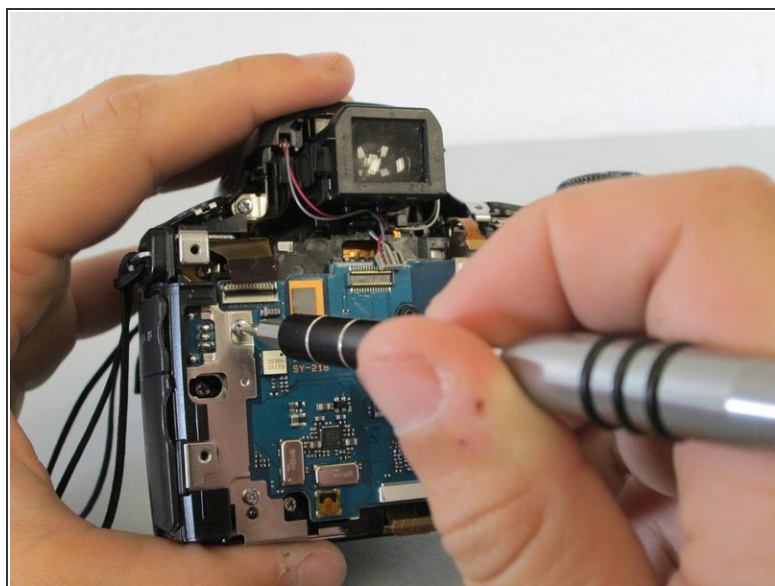
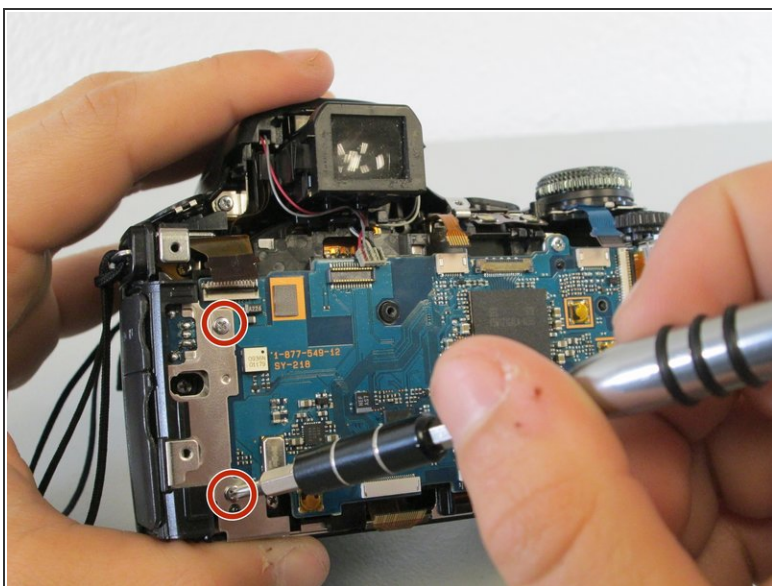
## Step 11



- Remove the #00 4.0 mm Phillips screw and the #00 6.0 mm Phillips screw holding the motherboard to the front enclosure.
- Disconnect the eight ribbon cables from their ports on the motherboard.

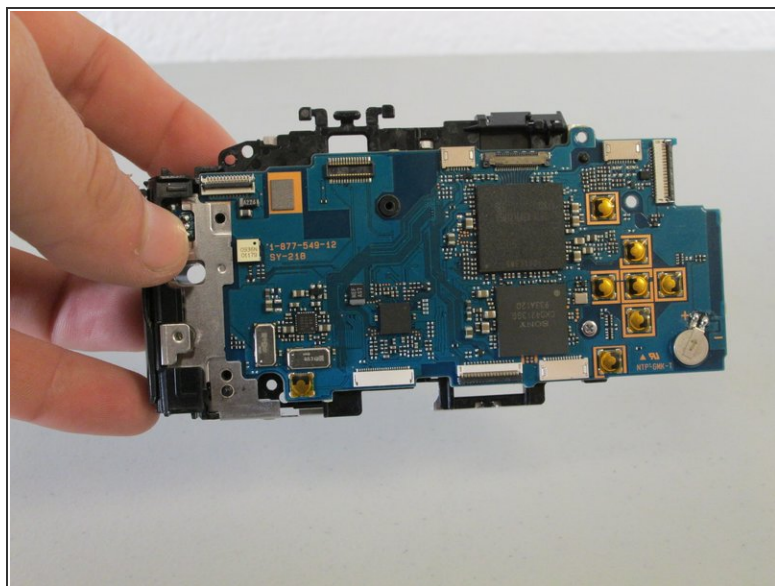
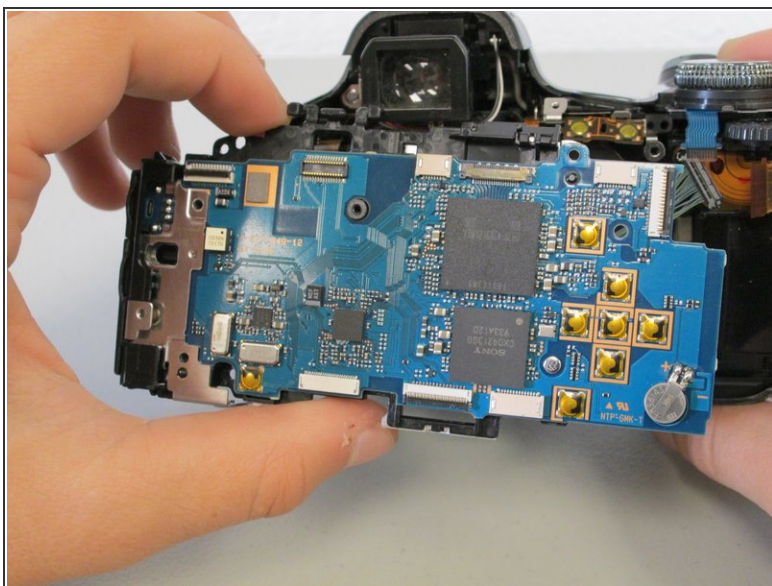


## Step 12



- Detach the metal bracket from the enclosure by removing the two #00 4.0 mm Phillips screws.

## Step 13



⚠ If you feel resistance from the board, double check all screws and cables have been removed to avoid damage.

- Completely remove the motherboard by gently pulling the board away from the camera.

To reassemble your device, follow these instructions in reverse order.