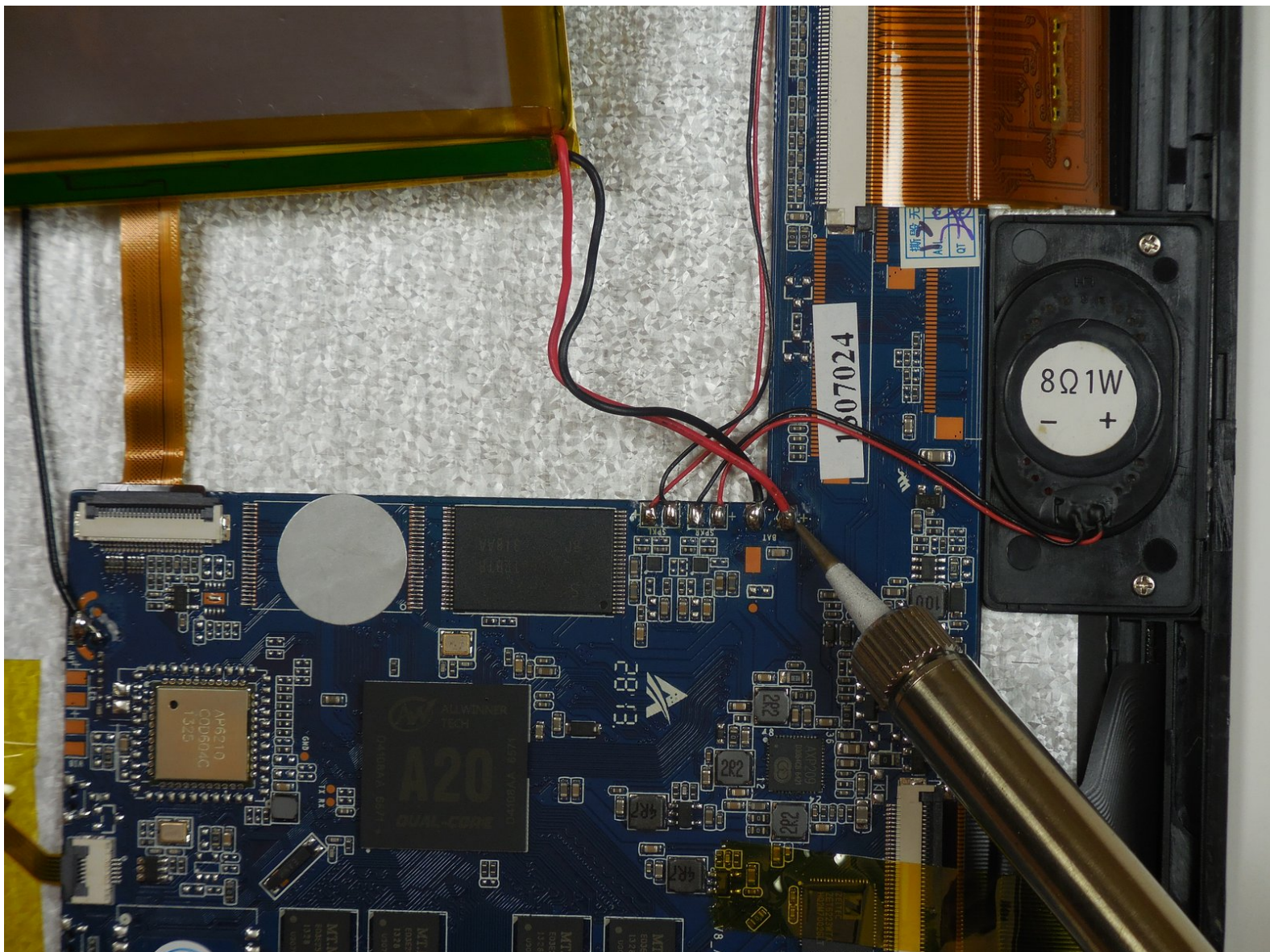




Polaroid S10 Battery Replacement

prerequisite only

Written By: Christofer

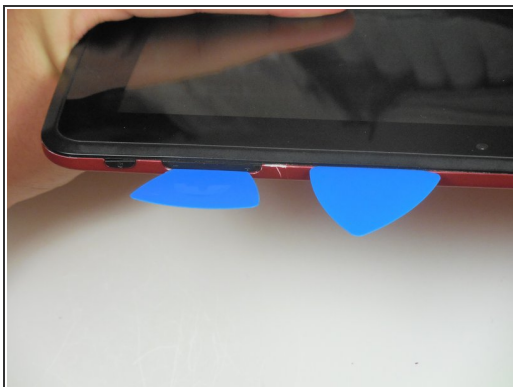




TOOLS:

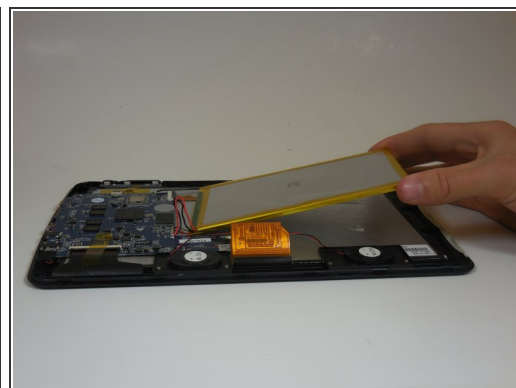
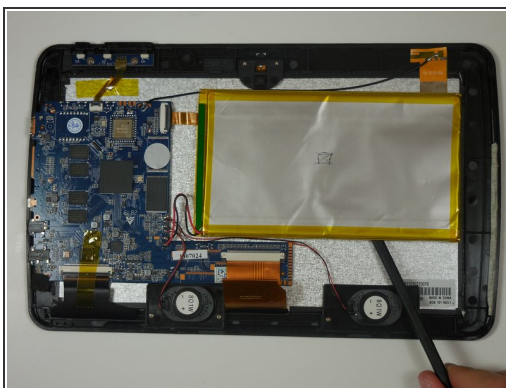
- [Soldering Iron](#) (1)
 - [iFixit Opening Picks set of 6](#) (1)
 - [Metal Spudger Set](#) (1)
-

Step 1 — Removing the backcover



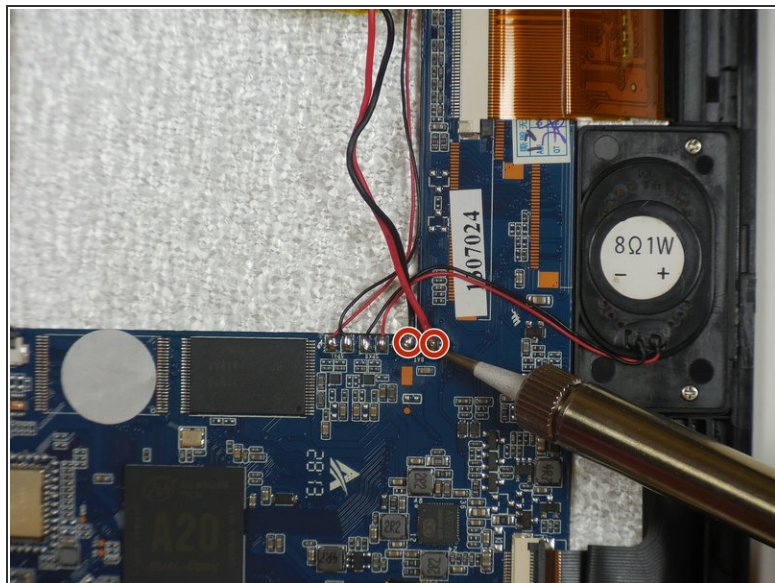
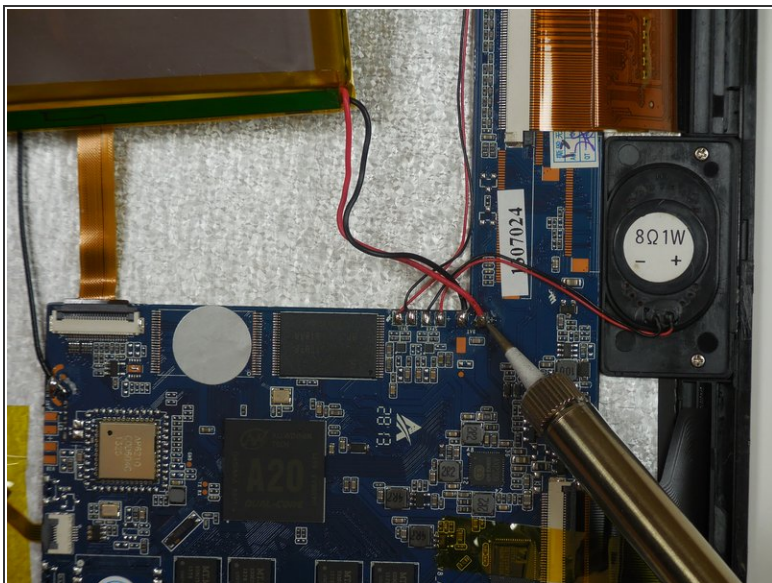
- Place an opening pick between the volume button and the back cover.
- ⓘ More than one pick may be needed, but avoid placing more than two picks in the same space.
- ⚠ Excessive force on the pick will break the volume button.
- Carefully remove the back cover using the metal spudger.
- ⓘ It is normal to hear a snapping noise due to the plastic tabs on the back cover.

Step 2 — Battery



- Use a spudger to carefully remove the tape nearest to the battery.
- ⚠ Use caution while removing tape. Too much force can damage the device.
- Gently use the spudger to remove the battery out of place by wedging it out from the bottom.
- ⚠ Do not move the battery. Moving it could cause the cables to be ripped out.

Step 3 — Battery Connection



- Carefully desolder the 2 wires that connect the battery to the motherboard.

⚠ Do not touch the soldering iron to the motherboard or the LCD screen.

To reassemble your device, follow these instructions in reverse order.