



# Canon PowerShot SX50 HS Flash Bulb Replacement

This guide will lead you through the steps of replacing your flash.

Written By: Daniel Gurrola



---

## INTRODUCTION

Replace the flash of the Canon PowerShot SX50 HS.

---

### TOOLS:

- [Soldering Workstation](#) (1)
  - [Phillips #000 Screwdriver](#) (1)
-

## Step 1 — Battery



- Locate the battery compartment on the bottom of the camera.
- Push the latch on the outside of the battery door to the right to get to the battery pack inside.

## Step 2



- Pull the brown latch on the inside of the battery door towards your palm (to the left). The battery pack should pop out (battery not pictured).
- Now remove the battery pack from the camera with your fingers.



### Step 3 — Flash Bulb



- Lift up the flash as you would when using and activating the flash.

### Step 4



- Remove the two Phillips #000 screws, length 3 mm, on both sides of the flash.

## Step 5



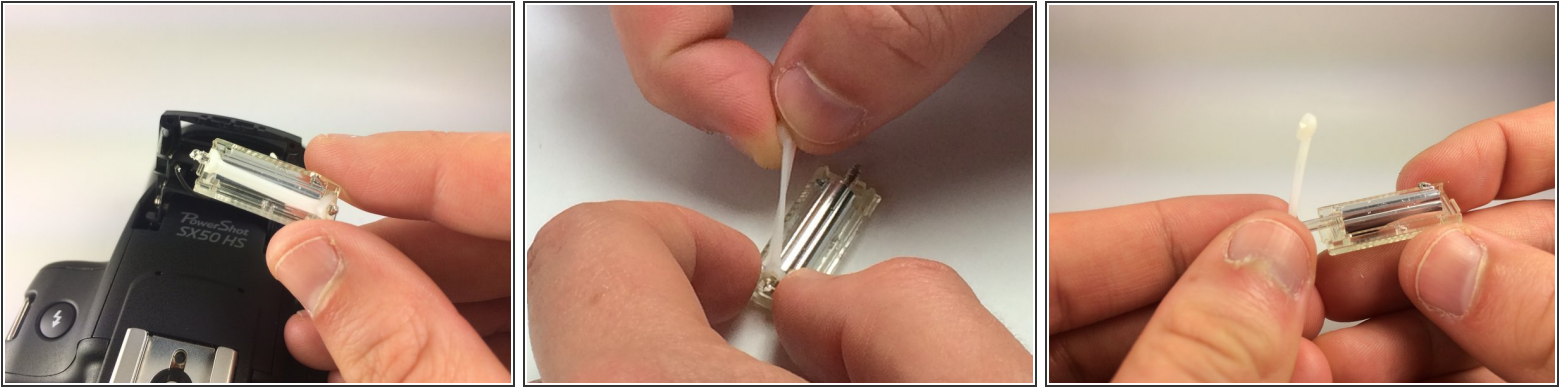
- Pull off the back encasement of the flash with your fingers. The internals will now become visible.

## Step 6



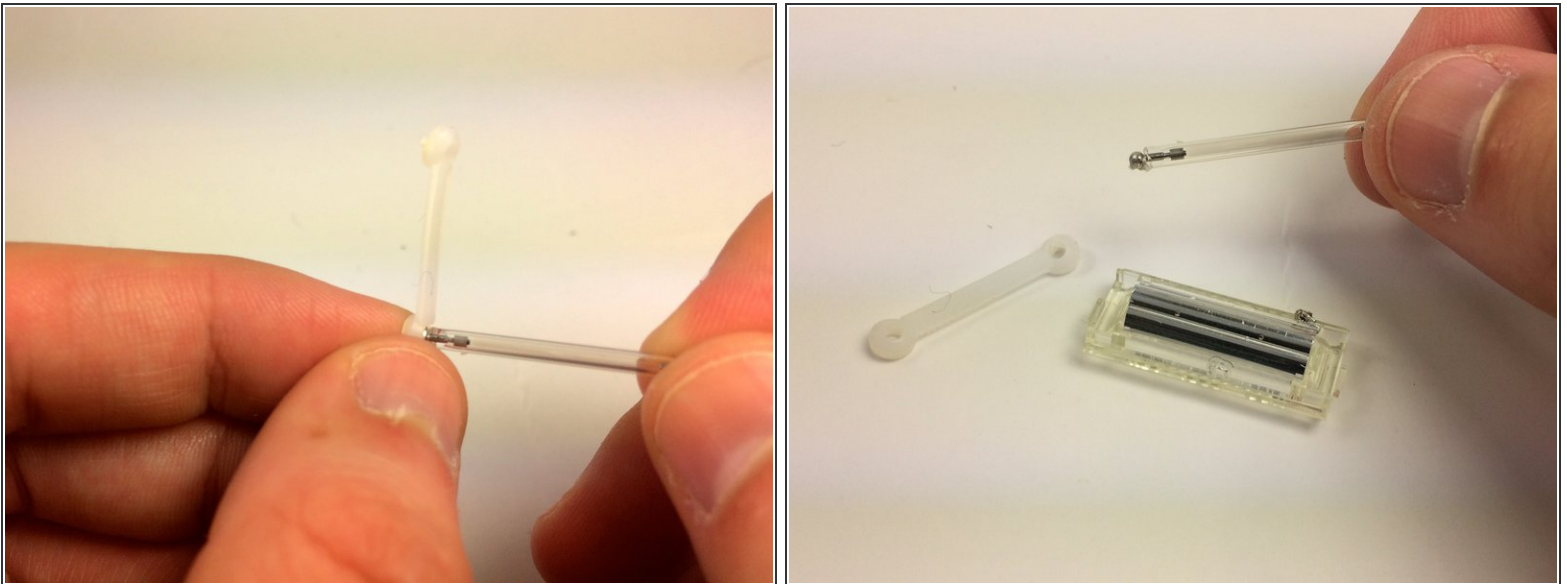
- Locate the black, white and the beige wires. Desolder these wires at the point of connection with the bulb.
- See the guide on this link for [soldering and desoldering](#).

## Step 7



- Once the wires have been desoldered, pull the flash out of its casing.
- Remove one end of the rubber band holding the bulb in place.
- Slide the bulb out of the flash.

## Step 8



- Completely remove the rubber band from the flash bulb.

To reassemble your device, follow these instructions in reverse order.