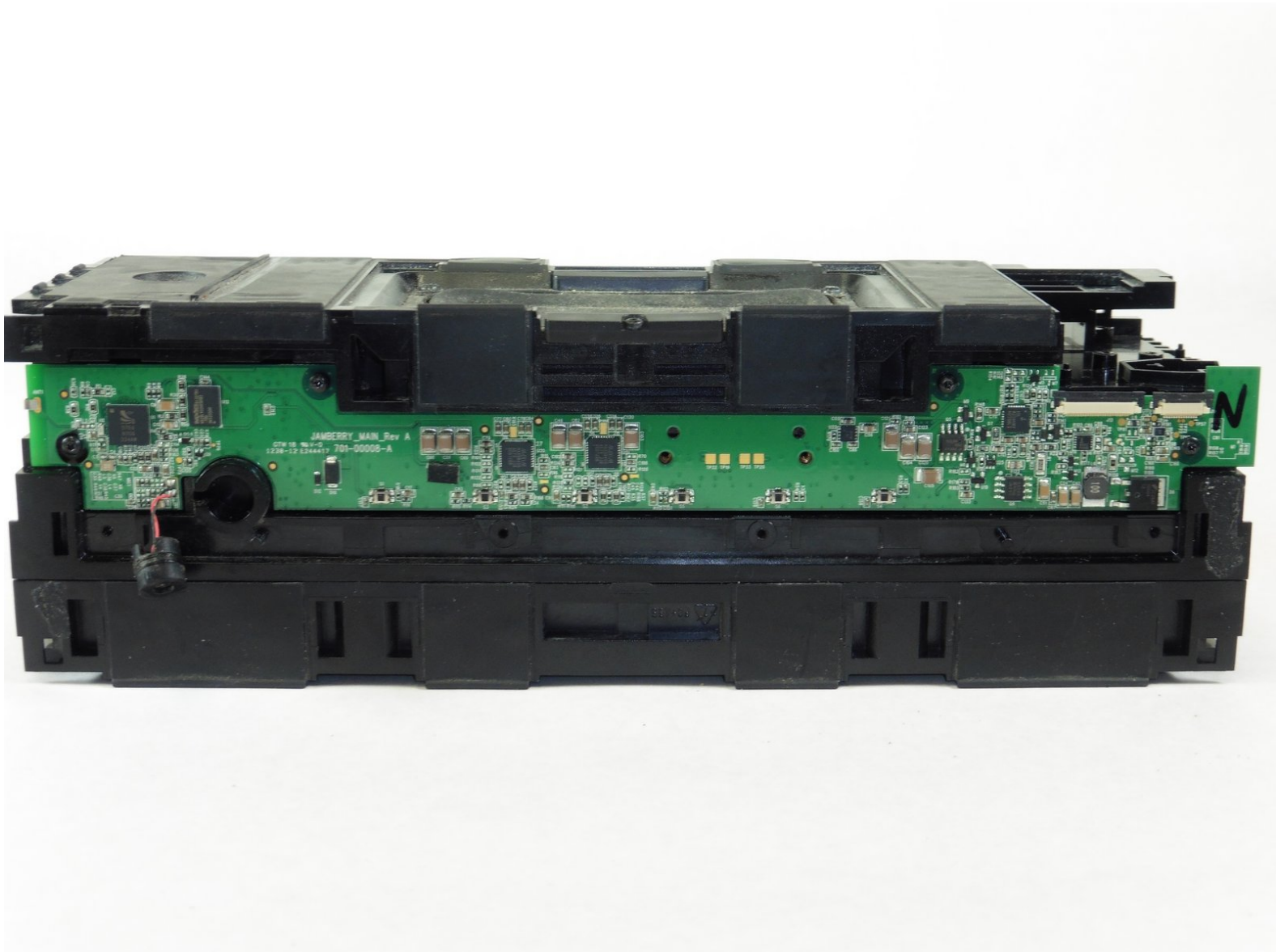




Jawbone Big Jambox Button Circuit Board Replacement

Replace your sticky or non-responsive buttons to be able to control your Big Jambox again.

Written By: Zoe Houghton



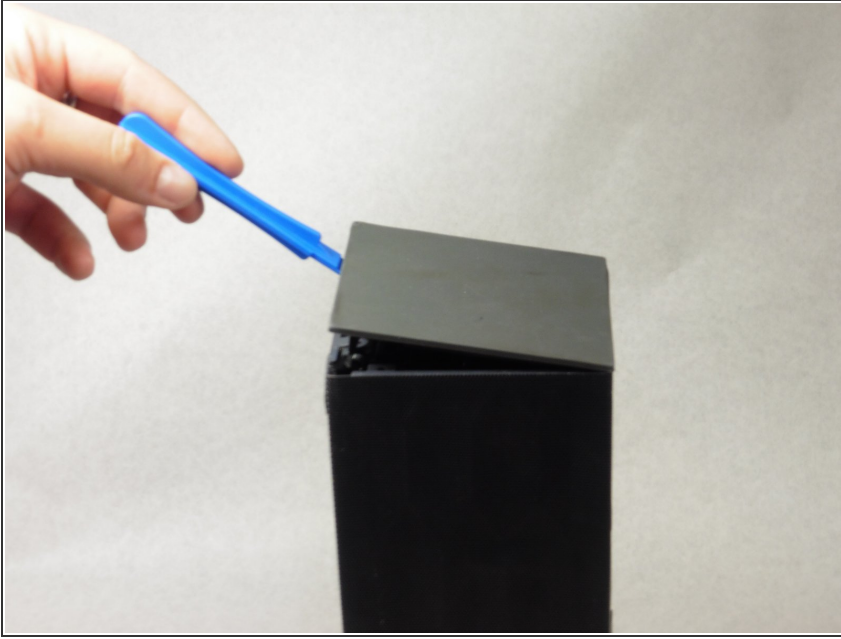
INTRODUCTION

If resetting your Big Jambox does not work, these are the instructions on how to replace the button circuit board. This is a longer process because you will need to also remove the speakers.

TOOLS:

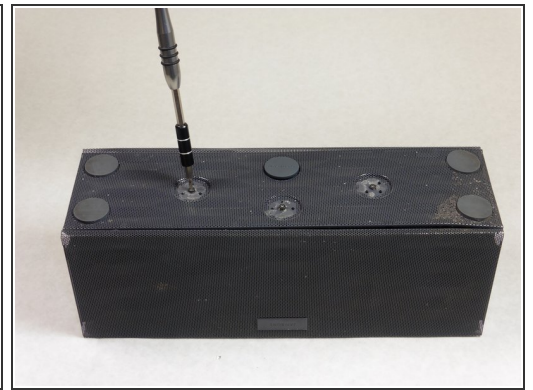
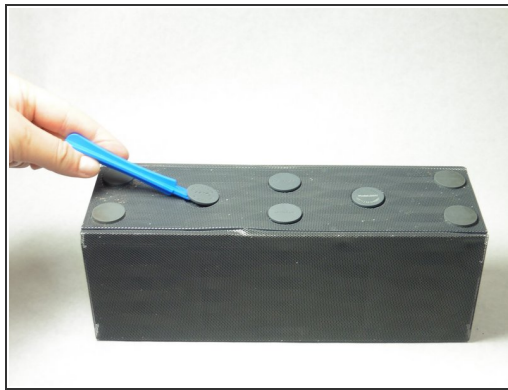
- [iFixit Opening Tools](#) (1)
 - [Soldering Iron](#) (1)
 - [Utility Scissors](#) (1)
 - [T6 Torx Screwdriver](#) (1)
 - [Phillips #0 Screwdriver](#) (1)
-

Step 1 — Outer Case



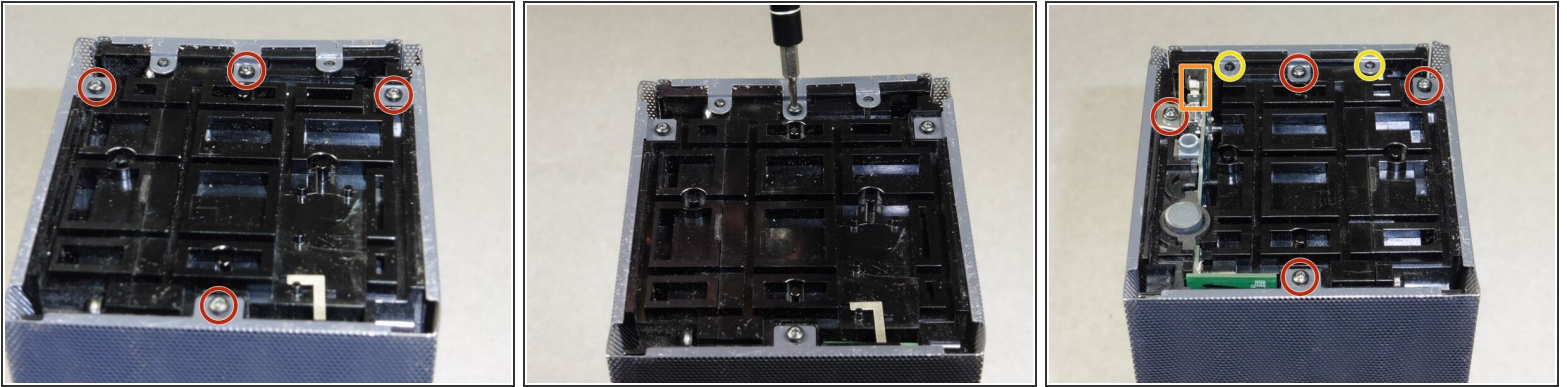
- Remove both end caps by putting a plastic opening tool in the center of the seam. Work around the edges to pry the end caps off completely.
- ⓘ Due to interior clips holding the end caps in place, use caution when applying force.

Step 2



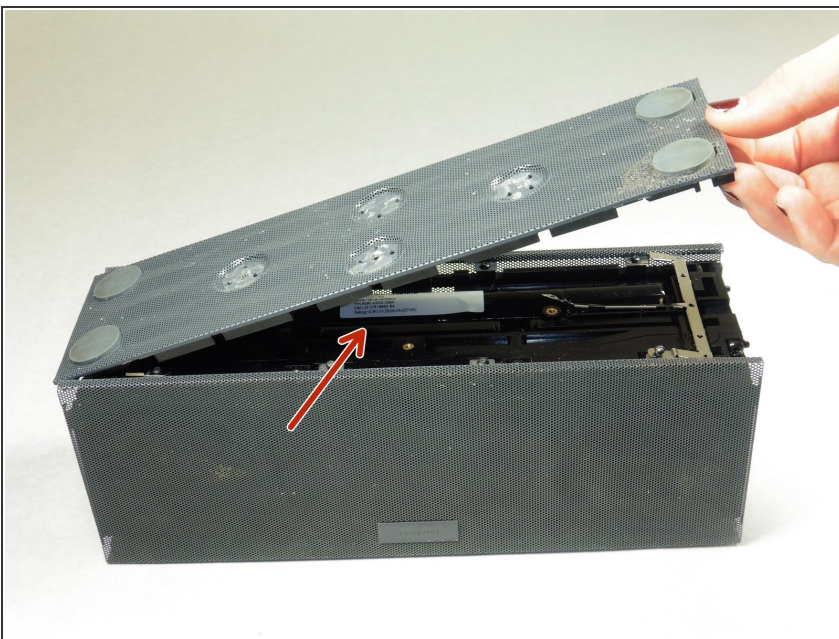
- Turn the Jambox upside down. Peel the indicated rubber tabs off, using a plastic opening tool if necessary.
- ⓘ You may want to only take the tabs half way off to avoid re-gluing when reassembling.
- Remove the three T6, 7.0 mm screws under each rubber tab.
- ✦ Because the screws are a different length, set the screws aside.

Step 3



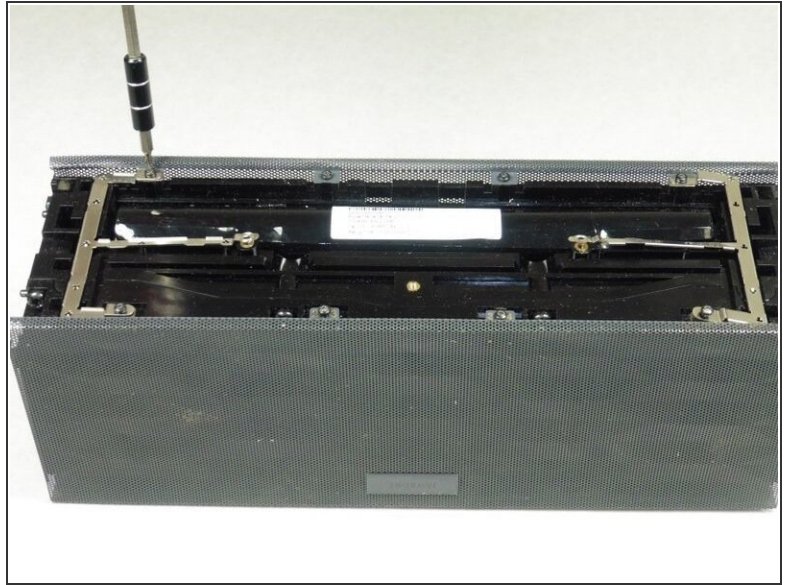
- With the Jawbone logo facing towards you and with correct orientation, place the Jambox with the left end cap facing upward.
- Unscrew indicated T6 9.7 mm screws.
- Gently loosen the tabs from their anchor points so the bottom may be removed.
- Flip the Jambox so the other end cap is facing up. The USB cable is on this side (metal grounding clip, indicated in orange). Repeat the above two steps.

Step 4



- Pry up the bottom panel by lifting from the device.
- Pull the bottom up. This may take a bit of force as the bottom is glued to device.
- Once removed, the battery will now be visible.

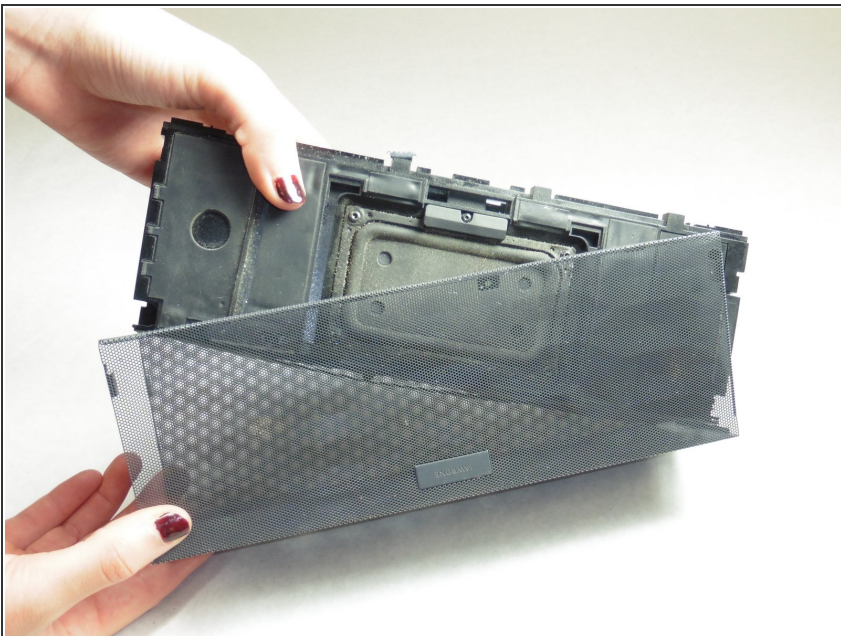
Step 5



i Before unscrewing, take a picture of the top view. That way, when you're reassembling the device, you'll know the orientation of the metal grounding plates.

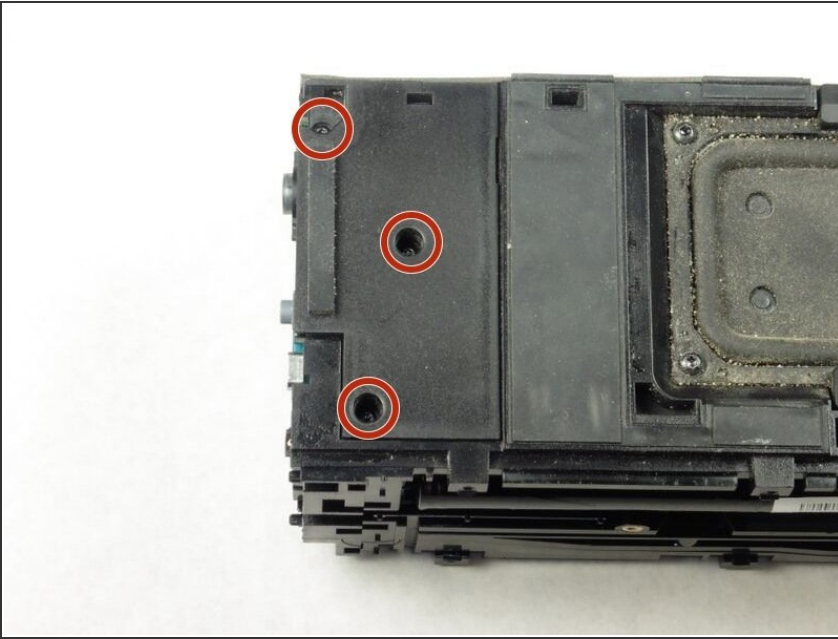
- Unscrew the eight indicated T6 9.8 mm screws. Remove metal grounding plates.

Step 6



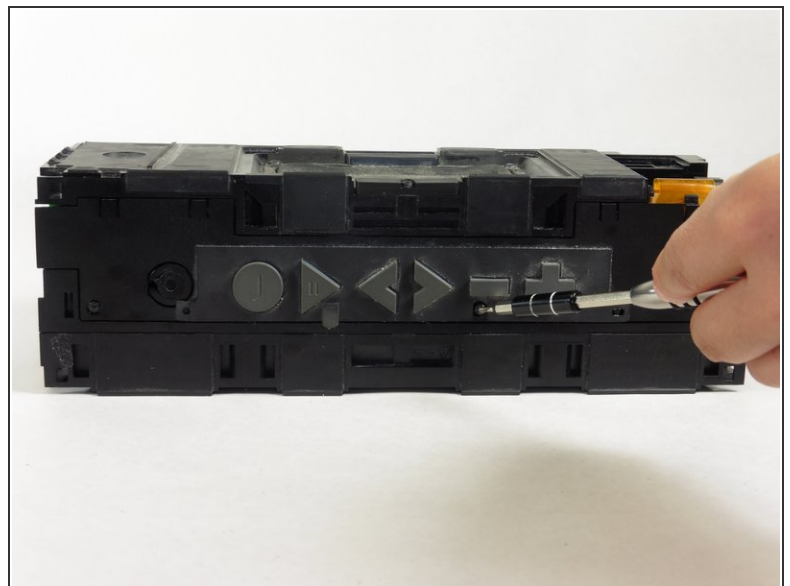
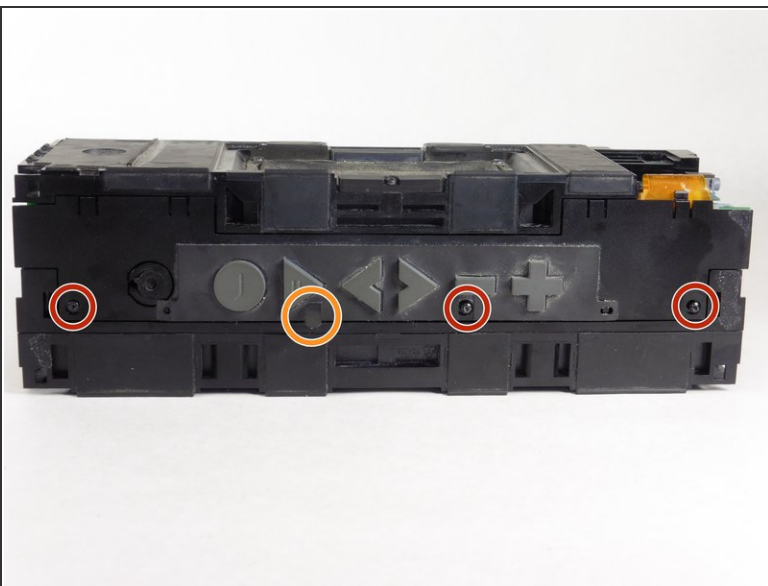
- Once all eight screws are removed, pry the sides of the Jambox to lift the body from it's shell.

Step 7



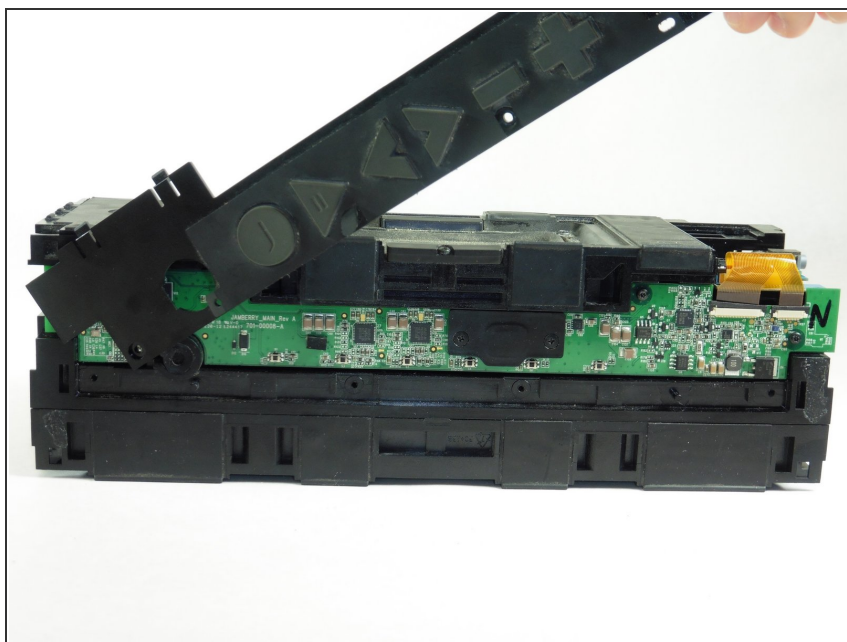
- With the battery facing forward, remove the three indicated T6 9.5 mm screws.
- Once the screws are removed, lift up the small plastic plate, revealing the auxiliary board underneath.

Step 8 — Button Panel



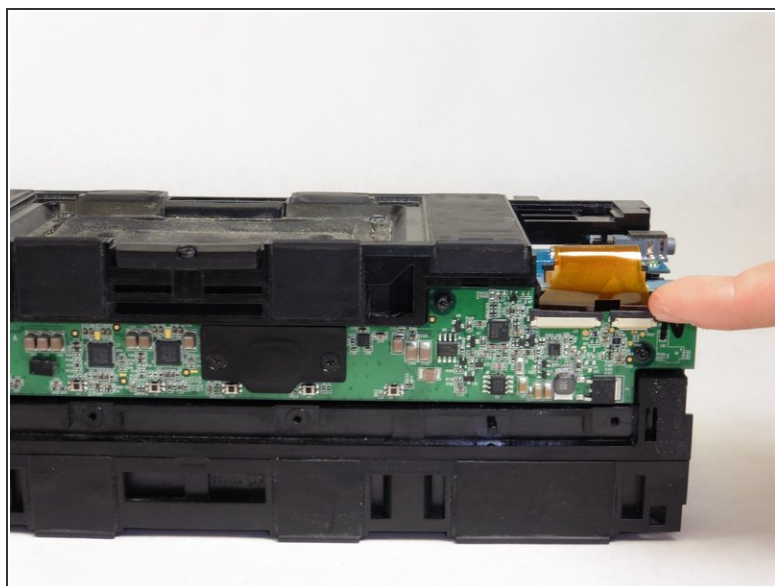
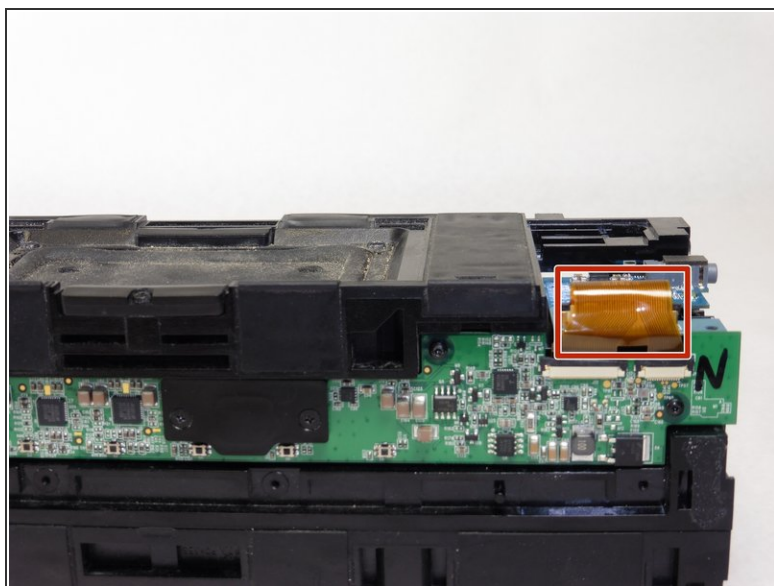
- Turn the Jambox so that the button panel is visible.
- Remove the indicated screws, T6 9.6 mm.
- *i* There is a small plastic flap obscuring the view of one of the screws, indicated in orange. In order to unscrew it, simply lift the flap out of the way.

Step 9



- Pop off the button panel.

Step 10



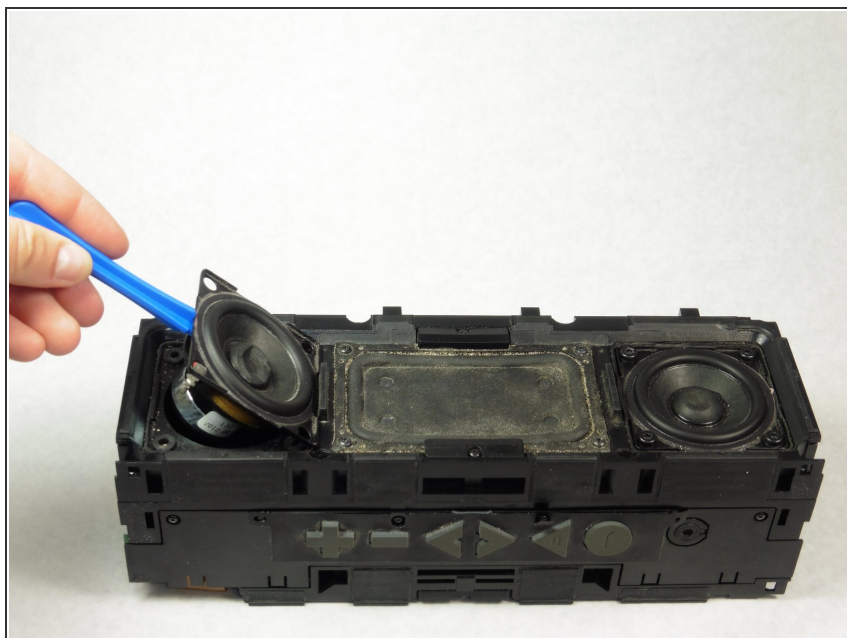
- Remove the colored ribbon that connects the green button circuit board to the blue auxiliary board by using your finger to lift the small black tabs that clamp down the ribbon.

Step 11 — Speaker



- Place the disassembled Jambox with the speakers facing up.
- Locate the screws around the broken speaker.
- Use a T15 screwdriver to remove the four 12.1 mm screws around the broken speaker.

Step 12



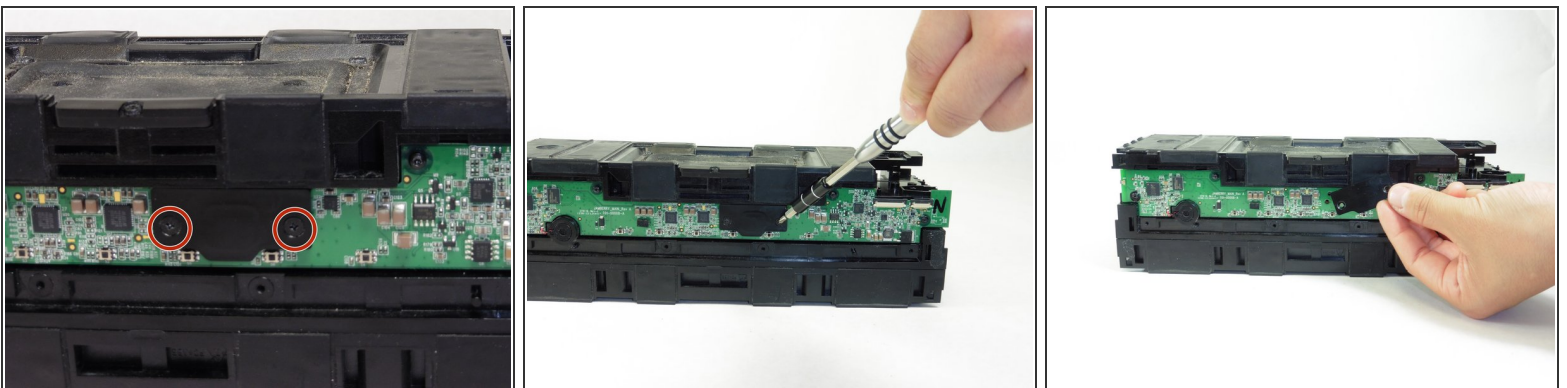
- Using a plastic opening tool, pry the speaker out of the Jambox.

Step 13



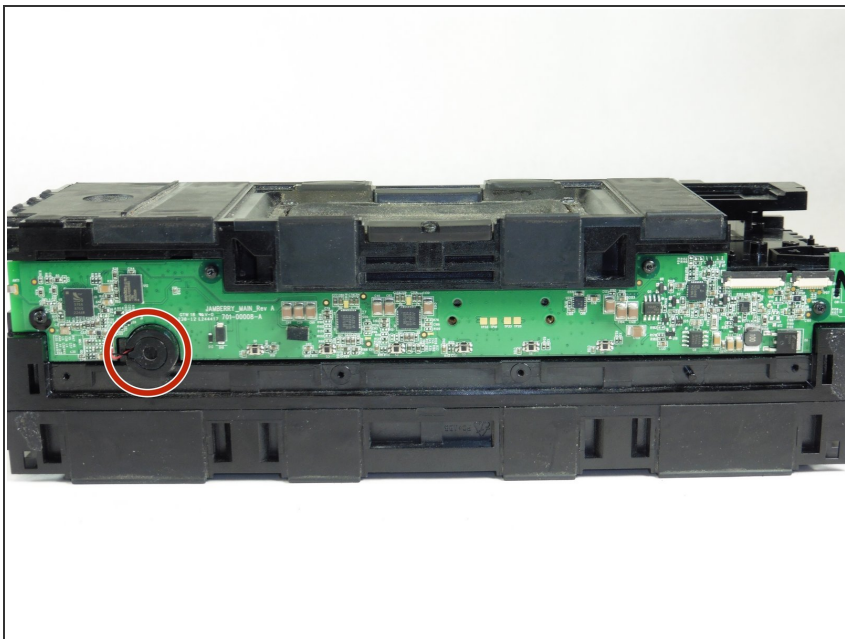
- Desolder the wires from the speaker terminal in the Jambox.
- ☞ Detach the round speaker from its square frame, and save the square frame for the replacement speaker.
- ⚠ Use caution when operating a soldering iron due to extreme heat.
- ℹ For instructions on how to solder and desolder, take a look at the [soldering guide](#).

Step 14 — Button Circuit Board



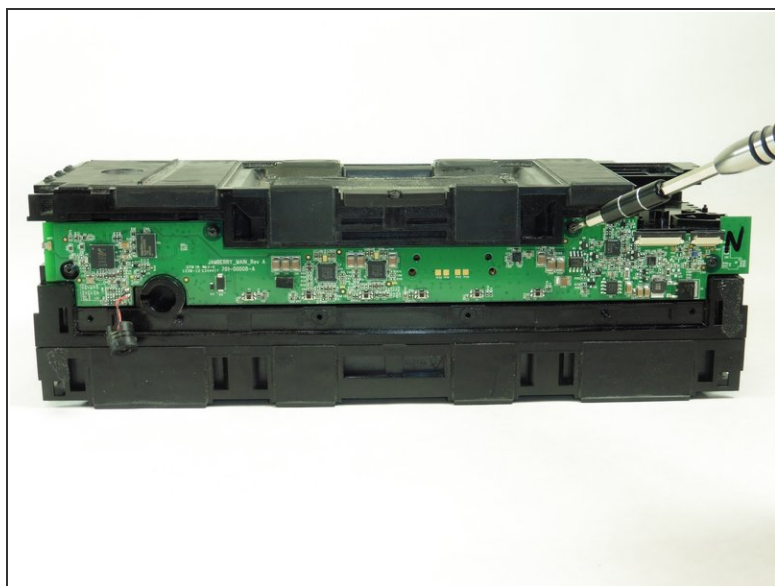
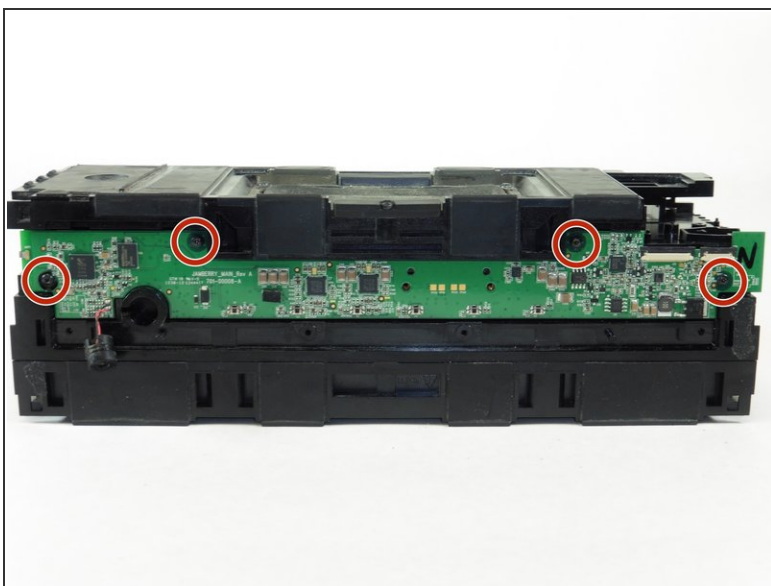
- Remove the two PH0, 5.8 mm screws on the small plastic black panel using a screwdriver.

Step 15



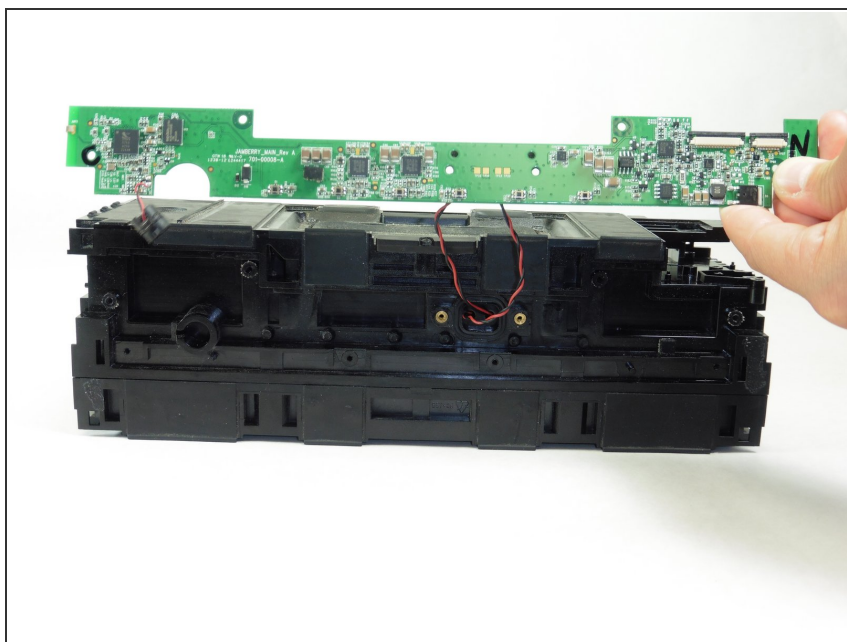
- Pull out rubber stopper using your fingers.

Step 16



- Remove the four T6, 9.9mm screws that secure the button circuit board to the body

Step 17



- Minding the small L-shaped piece of metal on the end opposite of the ports, lift the circuit board from the body of the Big Jambox.

To reassemble your device, follow these instructions in reverse order.