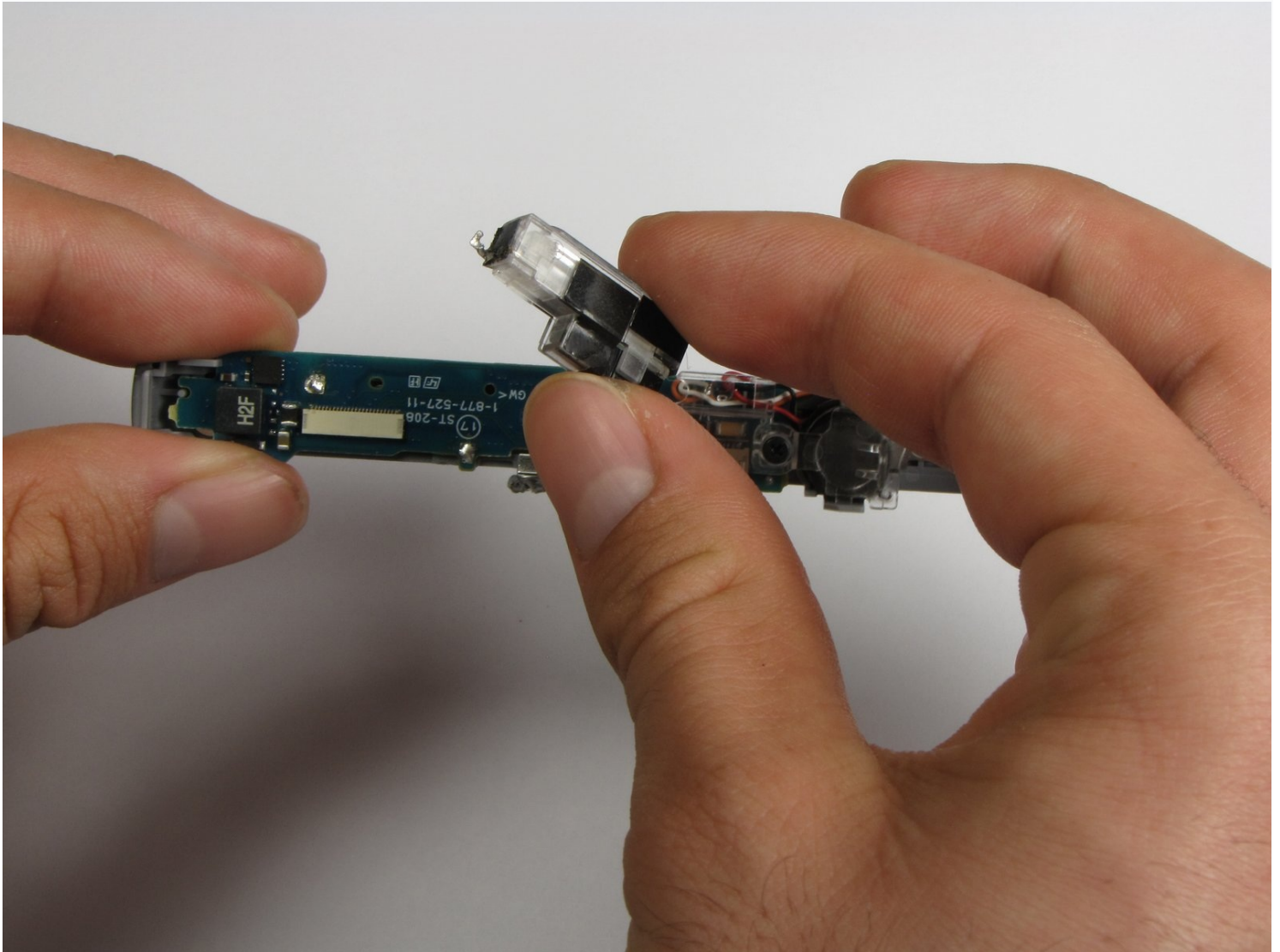




# Sony Cyber-shot DSC-W290 Flash Bulb Replacement

Make sure you have all of the requisite tools...

Written By: William Schill



# INTRODUCTION

Make sure you have all of the requisite tools on hand before beginning to replace the flash bulb.

---

## TOOLS:

[Soldering Workstation](#) (1)

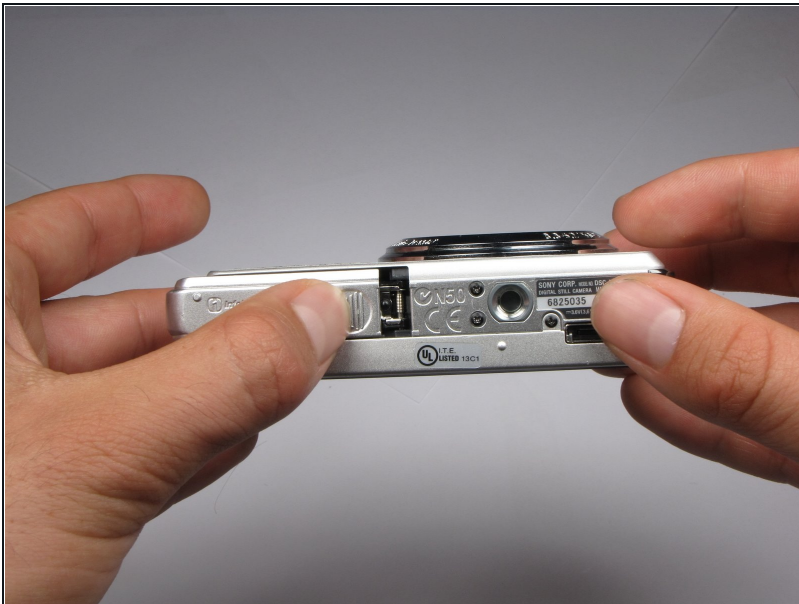
[Phillips #0 Screwdriver](#) (1)

[Tweezers](#) (1)

[Desoldering Braid](#) (1)

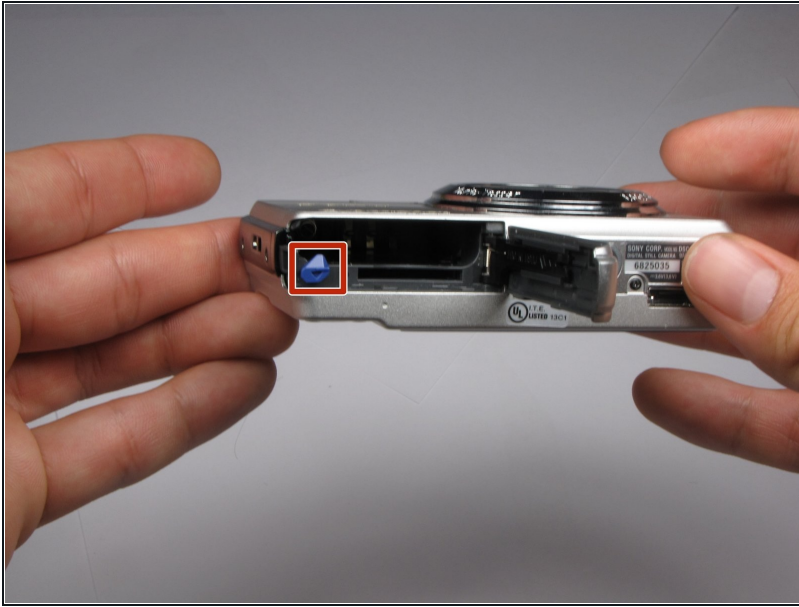
---

## Step 1 — Battery



- Find the hatch labeled "open" on the left side of the bottom of the camera.
- Slide the hatch in the direction that the arrow is pointing. The hatch will open outward on its own.

## Step 2



- Slide the blue locking tab to release the battery.
- Slide the battery out of the camera.

## Step 3 — Outer Casing



- Replace hatch and rotate camera 180 degrees. You should still be looking at the bottom of the camera.
- Remove the four 2.5mm Phillips #0 screws.

## Step 4



- Turn the camera so the left side-panel reading "5x Optical Zoom" faces you.
- Remove the two 2.5mm Phillips #0 screws.
- ① You may have to remove the screws with a pair of [tweezers](#) when the screws are almost out.

## Step 5



- Turn the camera so the right side faces you.
- Remove the two 2.5mm Phillips #0 screws.
- ① You may have to remove the screws with a pair of tweezers when the screws are almost out.

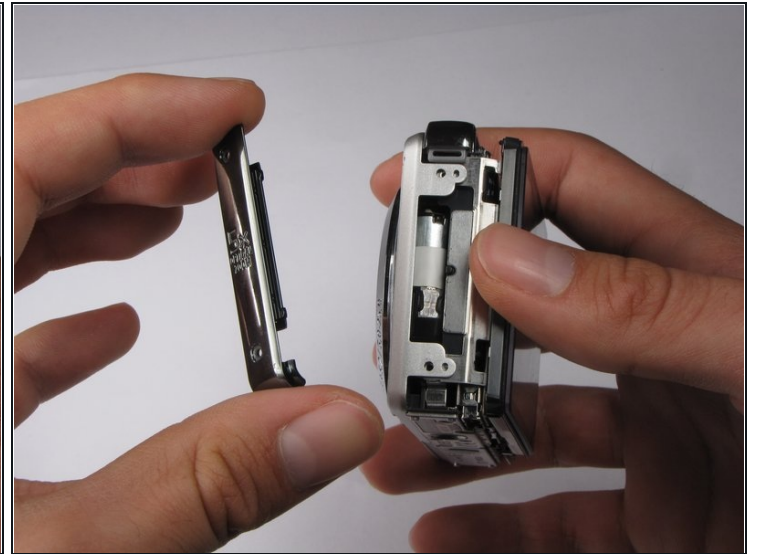


## Step 6



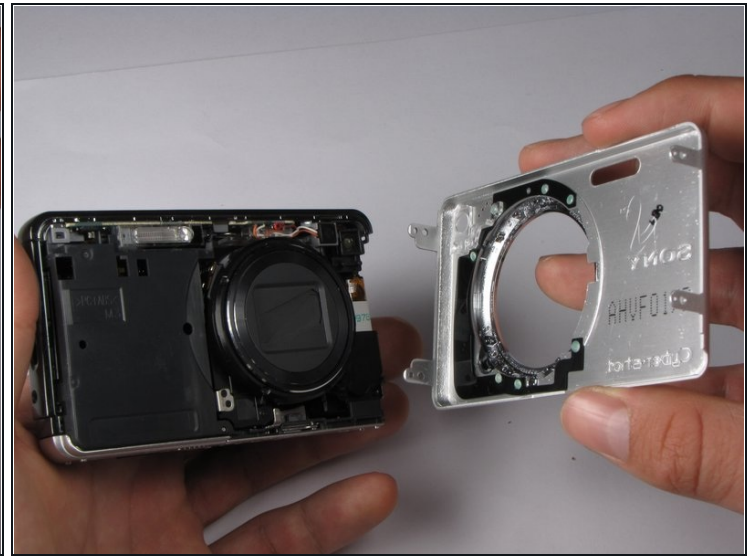
- Rotate camera so that the back is facing you.
- Pull the back casing directly away from the LCD screen.

## Step 7



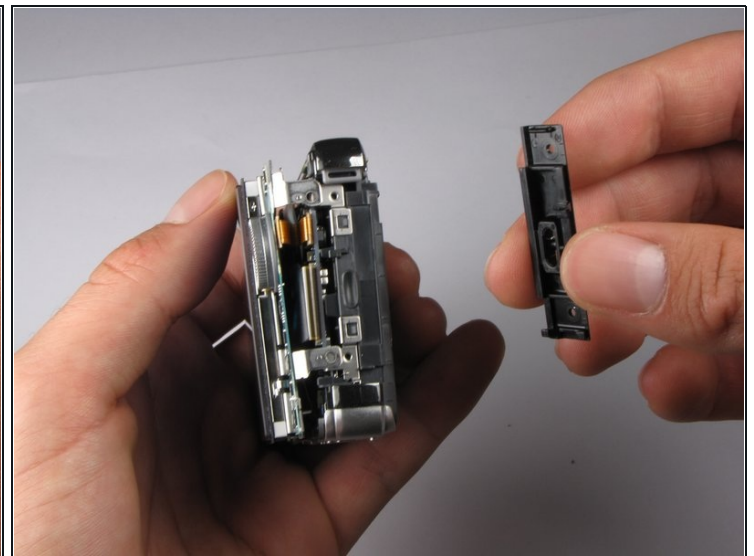
- Turn the camera so that the left side is facing you.
- Pull the left side-panel off of the camera.

## Step 8



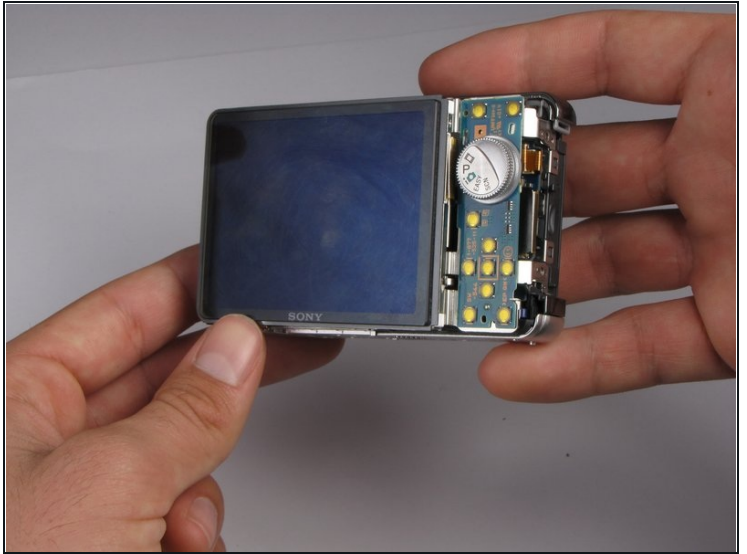
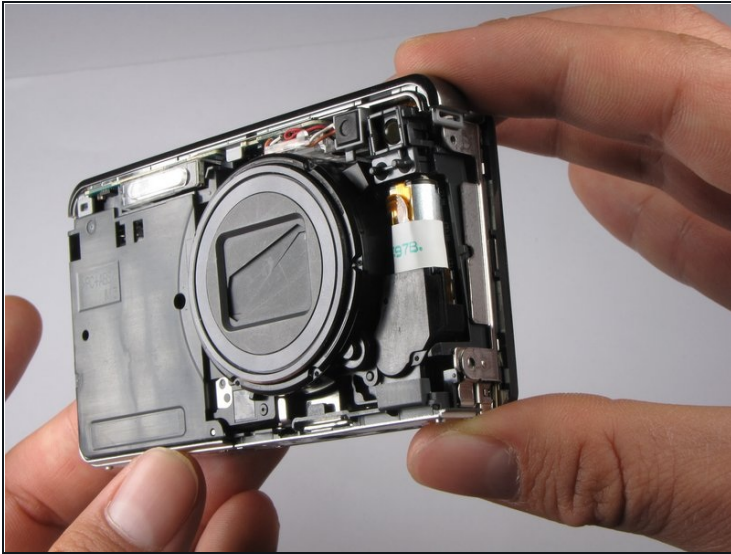
- Turn camera so that the front of the camera is facing you.
  - Pull the front casing directly away from the camera.
- ⓘ The right side panel may fall off when you take the front panel off.

## Step 9



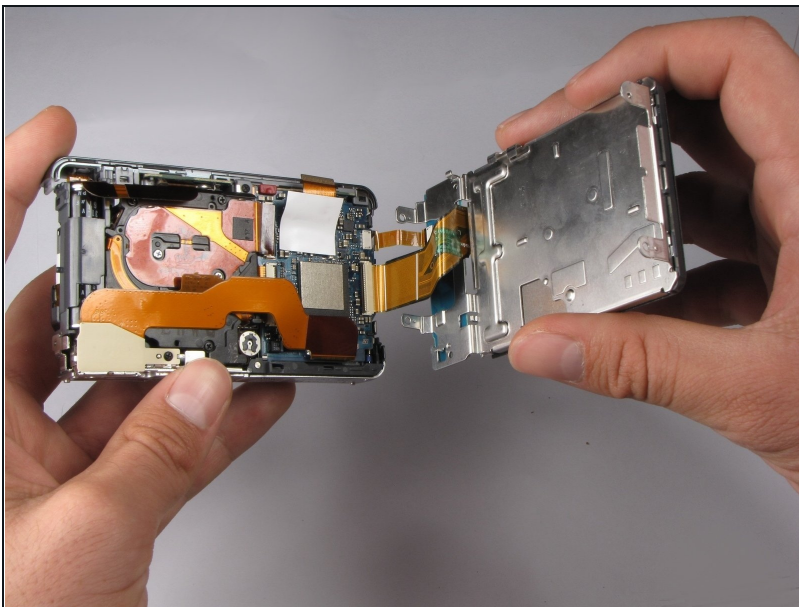
- Turn the camera so that the right side is facing you.
- Pull the right side-panel away from the rest of the camera.

## Step 10



- This is what your camera should look like now that you have removed the casing from all sides.

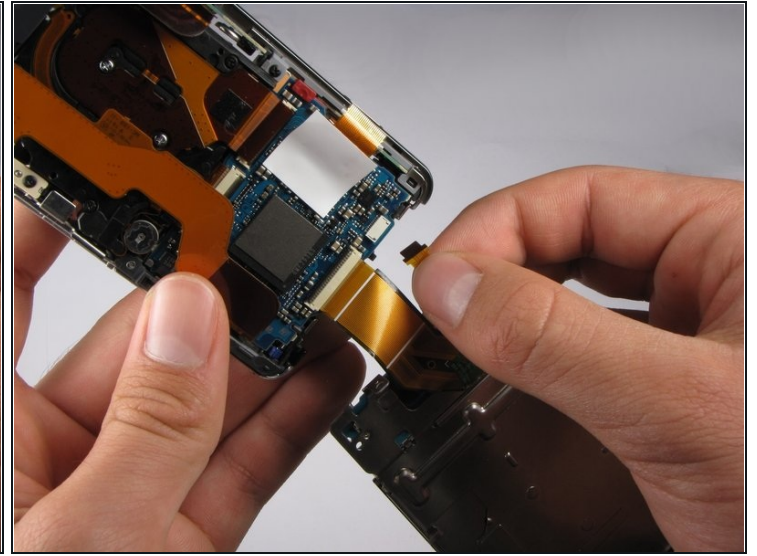
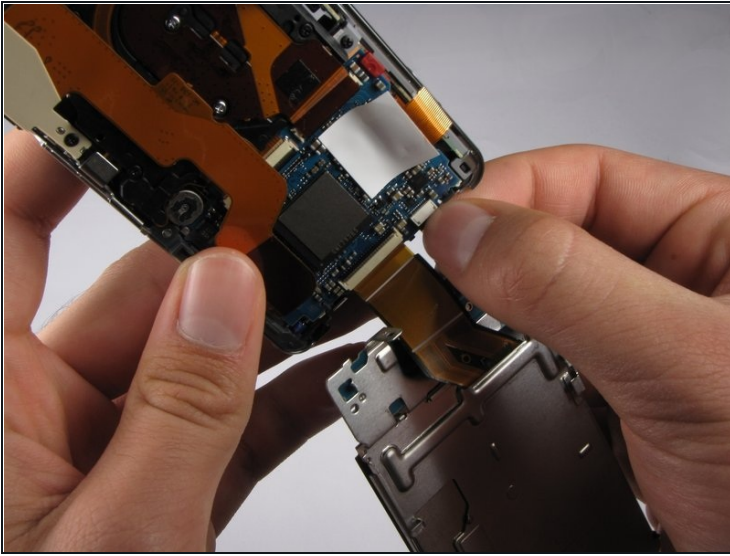
## Step 11 — LCD Assembly



- Gently pull the LCD and its casing away from the motherboard as shown.
- ⓘ Be careful not to rip out any ribbon cables.



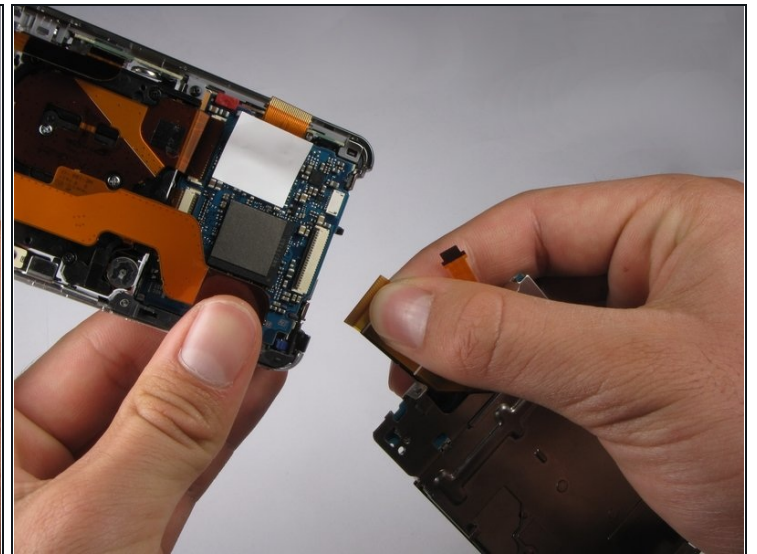
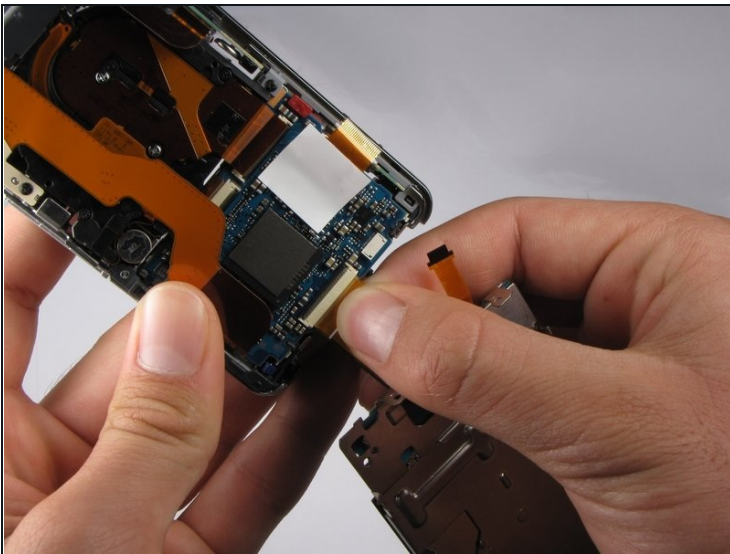
## Step 12



- Disconnect the small ribbon-wire by gently pulling on the small ribbon-wire where it connects with the motherboard.

⚠ Do *not* use excessive force to remove the wire because this may cause it to tear.

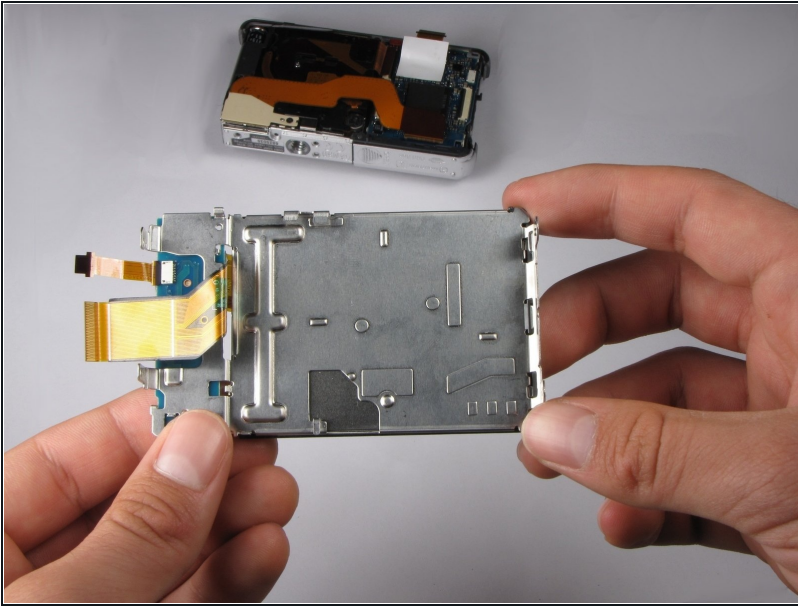
## Step 13



- Disconnect the large ribbon-wire by pulling on the large ribbon-wire where it connects to the motherboard.

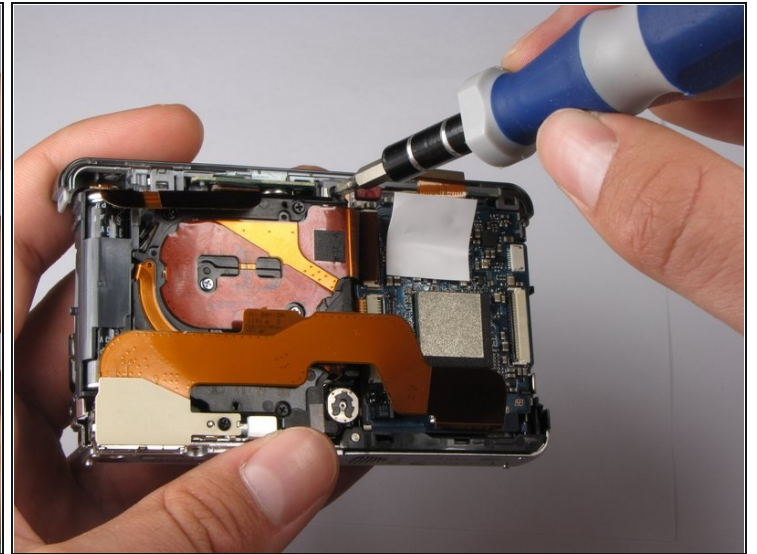
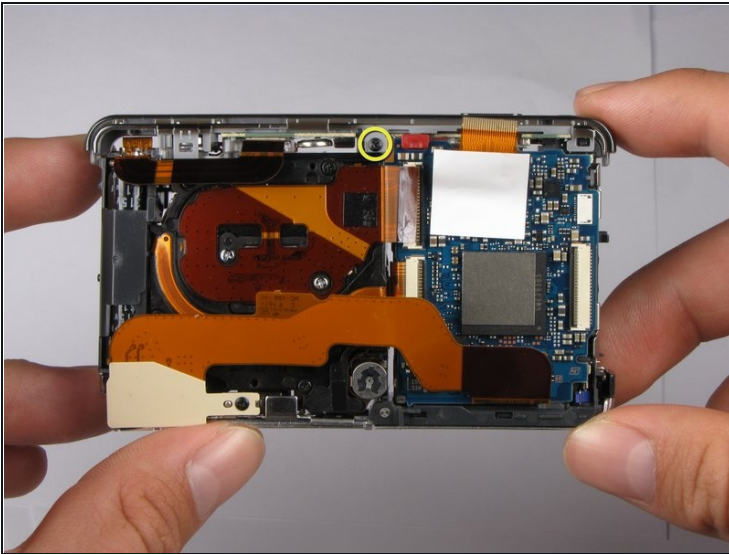


## Step 14



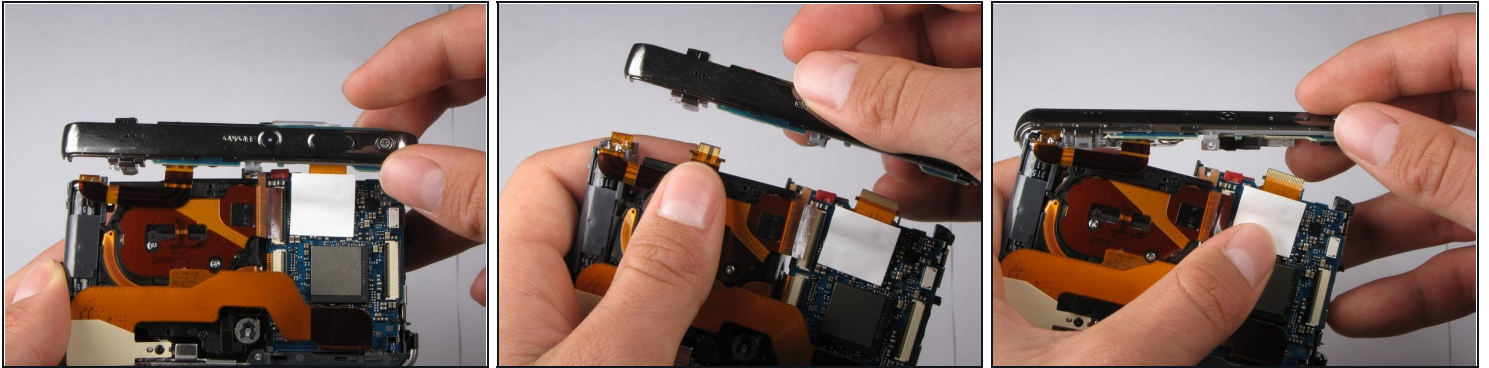
- Pull the LCD and its casing away from the rest of the camera.

## Step 15 — Flash Bulb Assembly



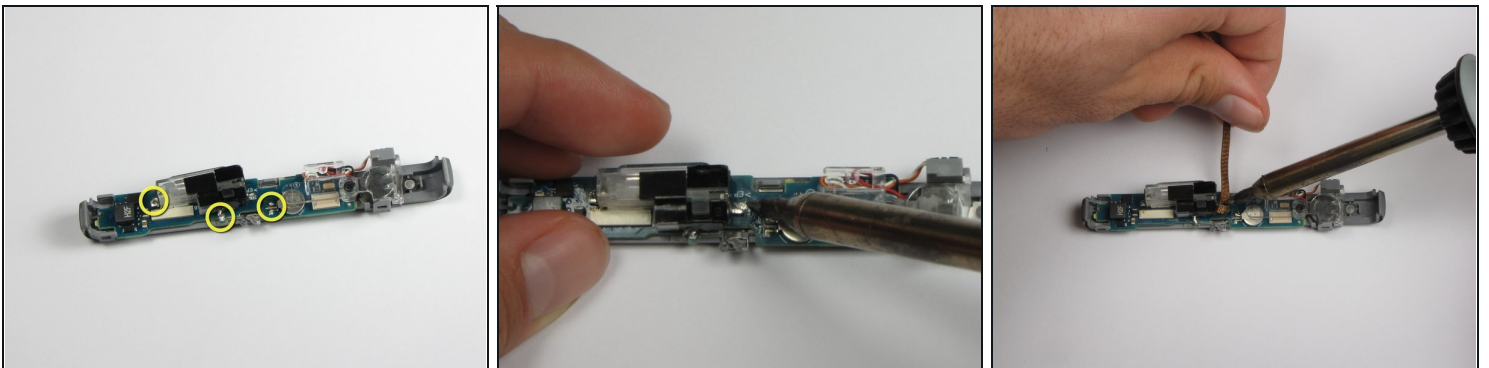
- Turn the camera so the back is facing you.
- Remove the 2.5mm Philips #0 screw at the top of the camera.

## Step 16



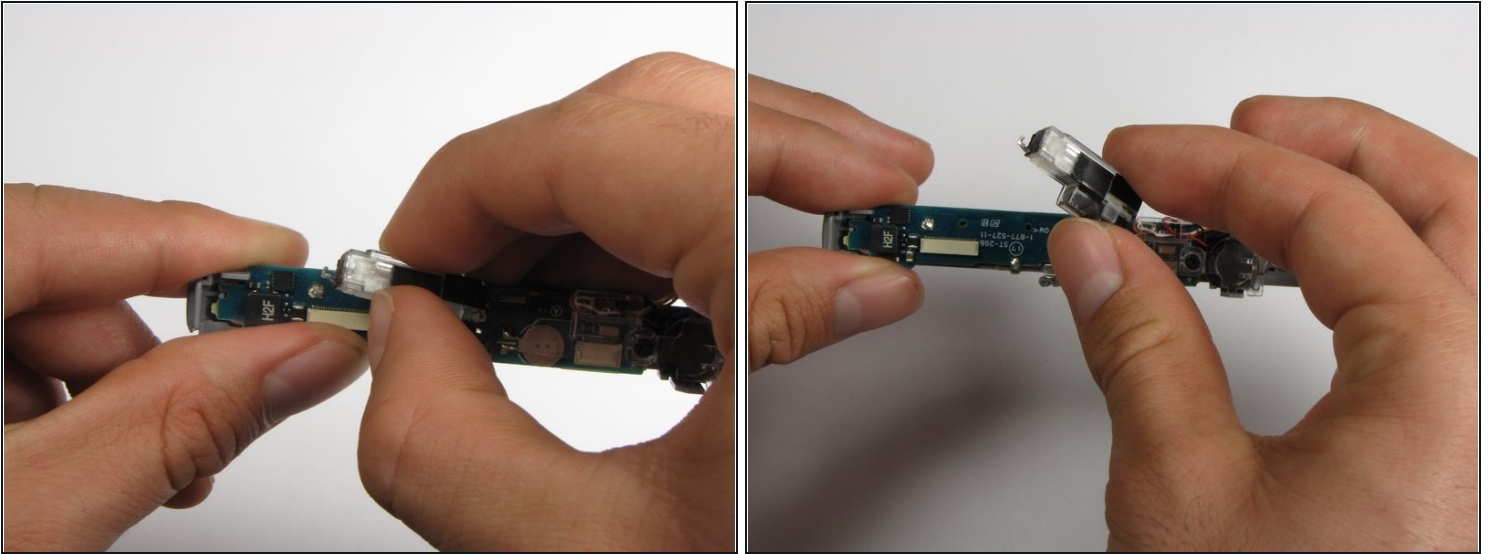
- Tilt top casing up and towards you.
- Carefully remove the right ribbon-wire from the top camera panel by pulling where the wire connects to the top.
- ⓘ Make sure to hold the camera with your thumb on the white square to ensure the ribbon-wire is not disconnected from the motherboard.
- Carefully remove the left ribbon-wire from the top camera panel by pulling where the wire connects to the top.

## Step 17 — Flash Bulb



- Pull the top of the camera off and turn it so the bottom is facing you.
- Desolder the three connections from the bulb to the small circuit board.
- Remove the excess solder using your soldering iron and desoldering wick.

## Step 18



- Gently wiggle the flash bulb to remove it from the joints.
- ① It may be necessary to use the soldering iron to heat up the joints as you pull it off.

To reassemble your device, follow these instructions in reverse order.