



GoPro Hero Casing Replacement

This guide is a prerequisite to many of the GoPro's replacement guides. It details how to get to the motherboard in the camera.

Written By: River Drake



INTRODUCTION

In order to replace or fix components in this camera, it is necessary to take of the back and get to the "guts" of the camera. This is because the camera does not come out of the case.



TOOLS:

- [Flathead Screwdriver](#) (1)
- [Phillips #000 Screwdriver](#) (1)
- [Metal Spudger](#) (1)



PARTS:

- [GoPro Hero Standard Housing](#) (1)

Step 1 — Casing



! Power off your GoPro before beginning disassembly.

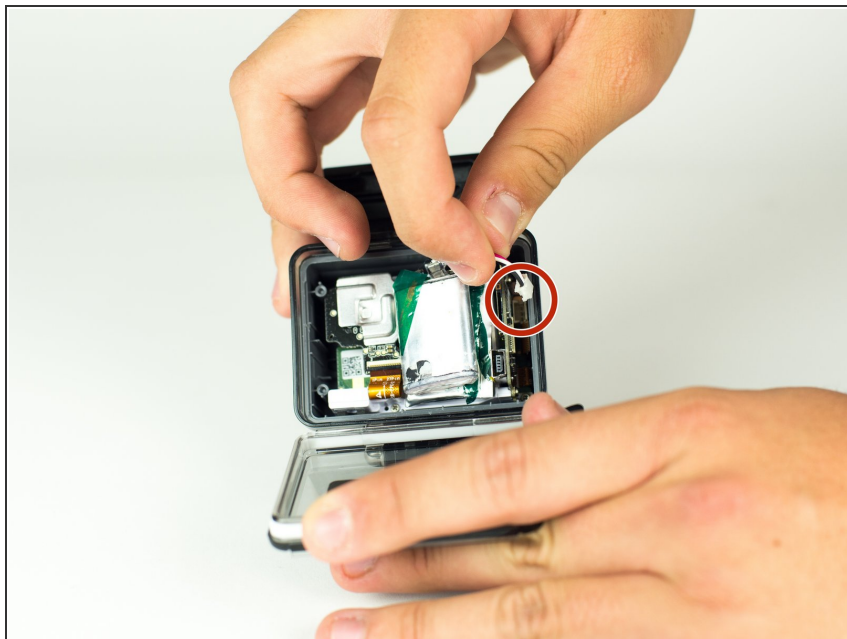
- Unclip the black latch to the camera case and open the case.

Step 2



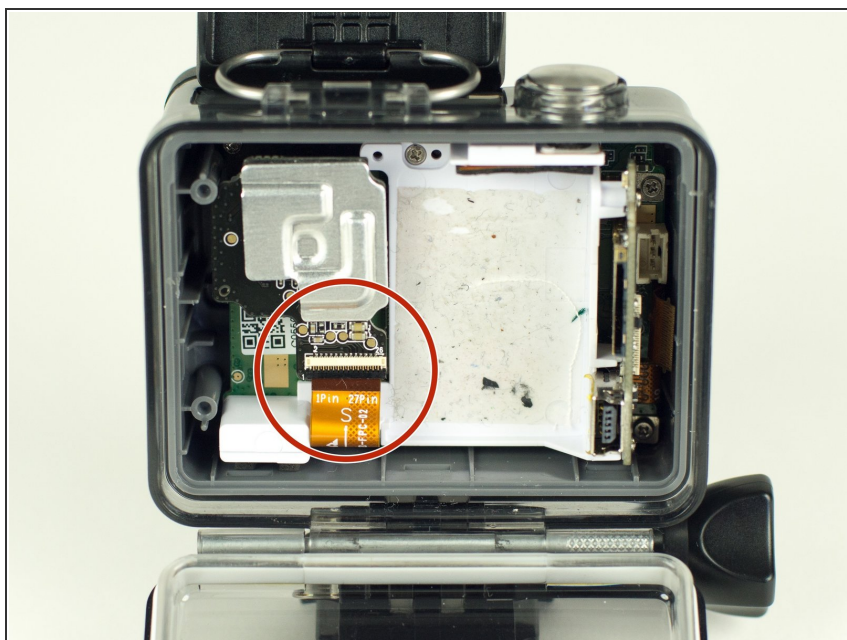
- Gently pry the back open by inserting a metal spudger between the case and back panel.

Step 3



- Disconnect the battery from the motherboard by unplugging the red, white, and black wires from the white adapter.

Step 4



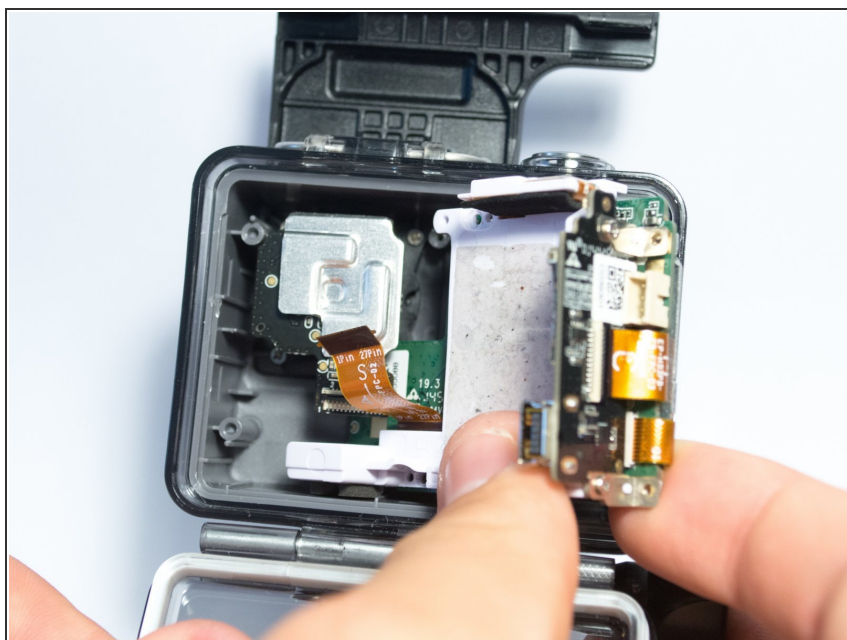
- Disconnect the ribbon cable from the lens by lifting the black latch and gently pulling the ribbon cable from the socket.

Step 5



- Use a Phillips screwdriver (PH000) to remove the four screws around the white plastic piece.
- ⓘ Make sure to keep track of these screws as they are very small.

Step 6



- Carefully remove the motherboard and white plastic piece from the case.

To reassemble your device, follow these instructions in reverse order.