



Logitech G27 Shifter Potentiometer Replacement

This guide will help you fix a non-responsive shifter due to a broken or misaligned potentiometer.

Written By: Nicholas Gholdoian



INTRODUCTION

If your Logitech G27's shifter stops responding, you may need to replace the potentiometer inside it. The potentiometer is the electrical component that keeps track of which gear the shifter is on. The replacement isn't too difficult, you mostly just have to unscrew lots of screws.



TOOLS:

- [iFixit Opening Tools](#) (1)
 - [10mm Socket](#) (1)
 - [Socket Wrench](#) (1)
 - [Phillips #1 Screwdriver](#) (1)
 - [2.5 mm Hex Bit](#) (1)
-

Step 1 — Shifter Potentiometer



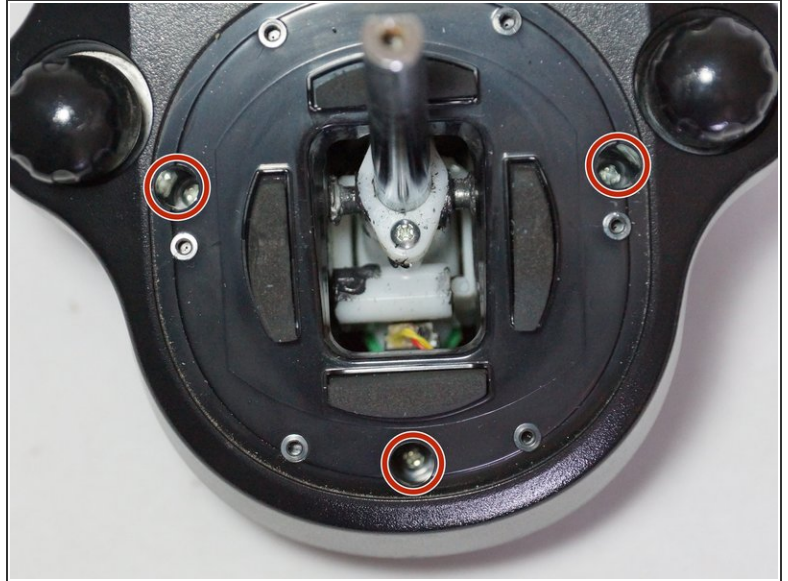
- Remove the six 9.0mm allen screws with a 2.5mm hex key.

Step 2



- Either use the plastic opening tools or a flat screwdriver to pry and pop off the cap on the shifter.

Step 3



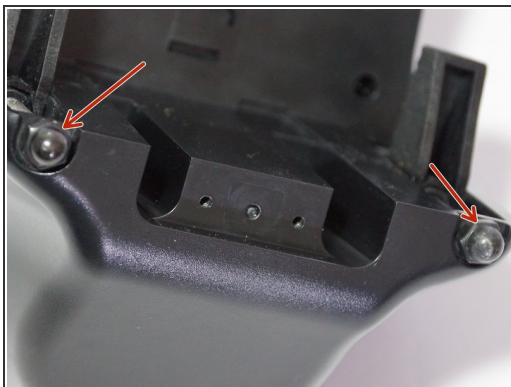
- Remove the black 12.3mm screw inside the shifter with a Phillips #1 screwdriver.
- After, remove the shifter top and shifter boot cover by pulling straight up.
- Remove the three 15.6mm screws with a Phillips #1 screwdriver.

Step 4



- Flip the device over and four 15.6mm screws with a Phillips #1 screwdriver.
- Pull the lower clamp up and out of the shifter assembly.

Step 5



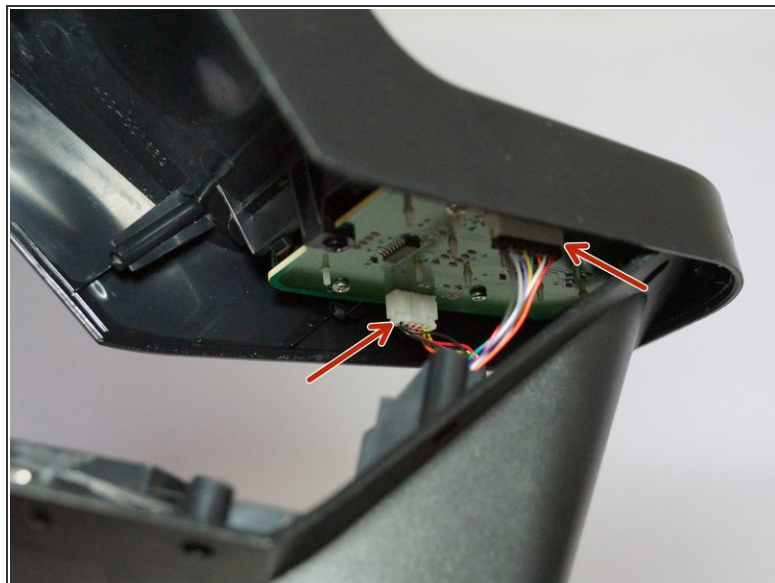
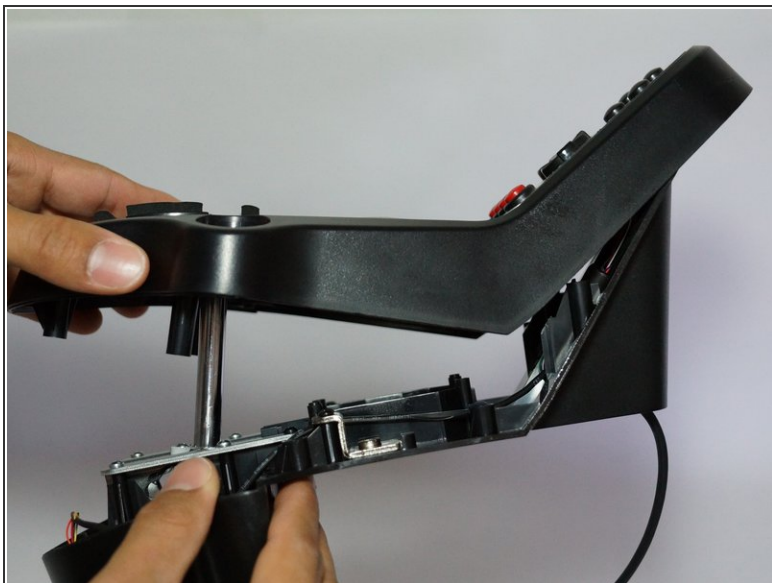
- Remove the two 10mm hex nuts with a 10mm socket and a ratchet.
- Next, unscrew the clamps by holding the lower portion of the shifter and unscrewing the top part.
- Also remove the nut on the screw if it wasn't removed with the lower clamp.

Step 6



- Remove the eight black 11.9mm screws from the bottom housing with a Phillips #1 screwdriver.

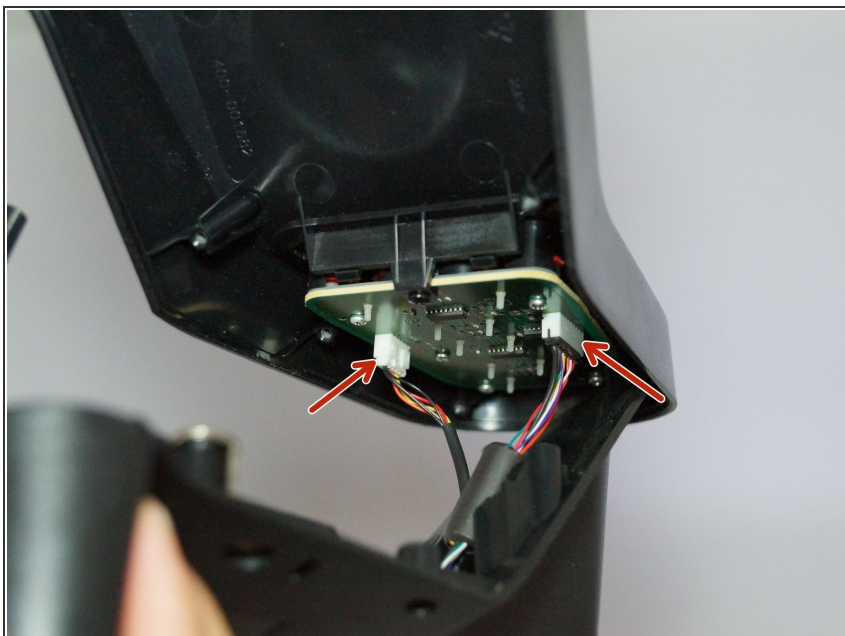
Step 7



- Carefully lift the top half of the housing from the bottom.

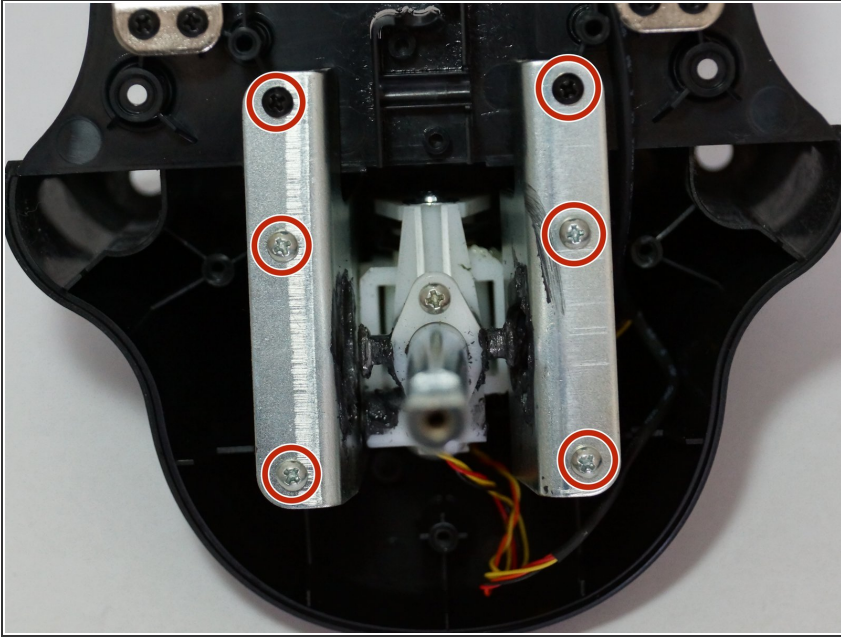
⚠ Watch out, there are 2 wires attached to the PCB board. Be careful not to damage these in any way.

Step 8



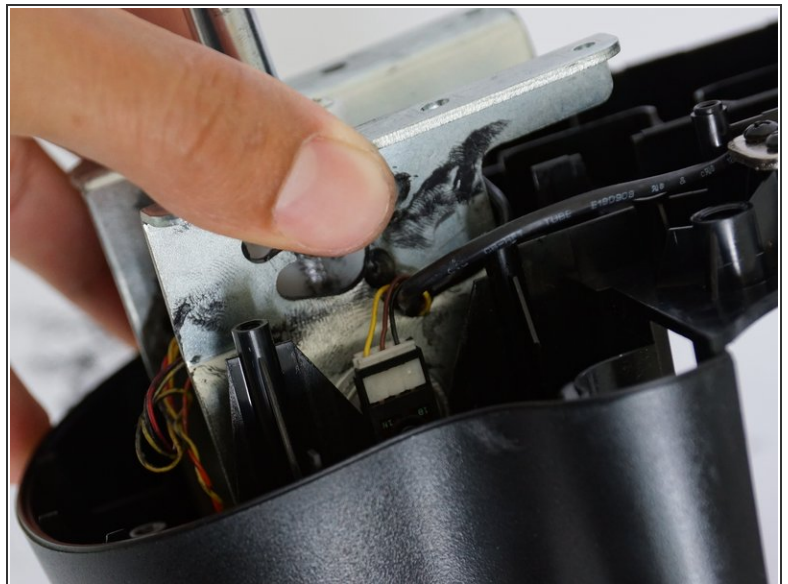
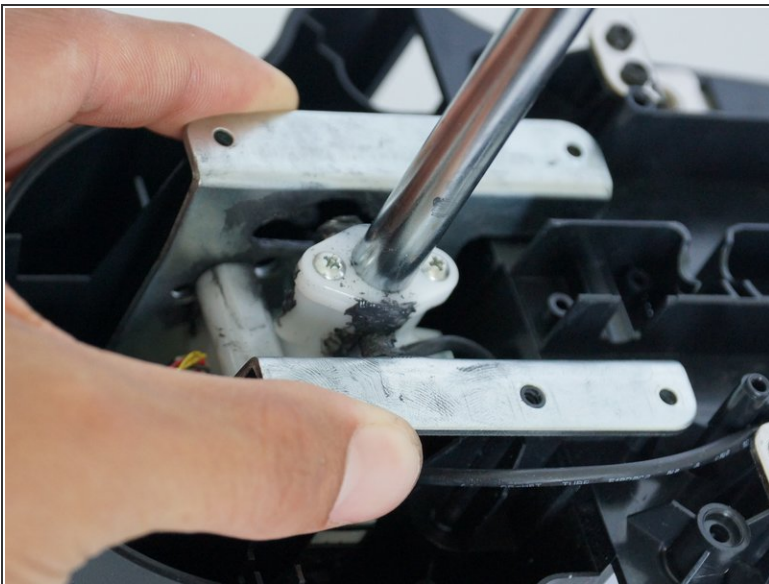
- Carefully remove the two plastic connectors with a plastic opening tool or your hands.

Step 9



- Go to the lower portion of the shifter; remove two black screws and four silver 15.9mm screws with a Phillips #1 screwdriver.

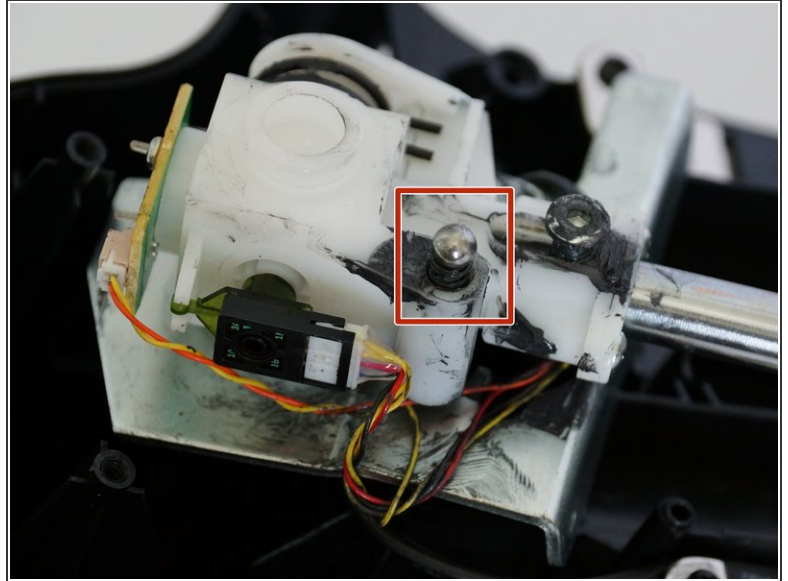
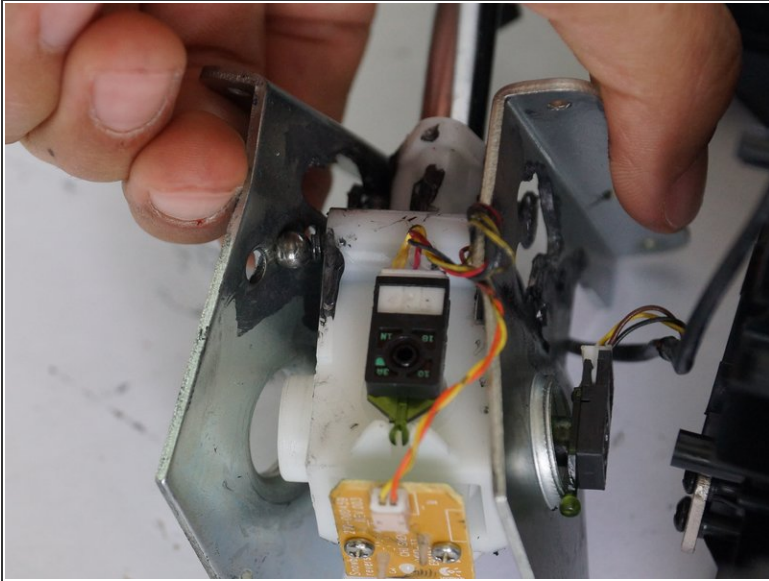
Step 10



There is grease covering the whole shifting assembly so it will get messy when removing.

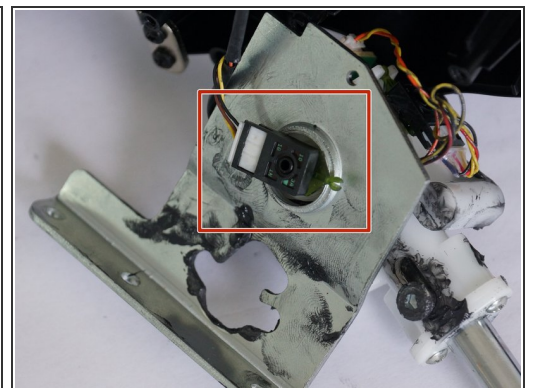
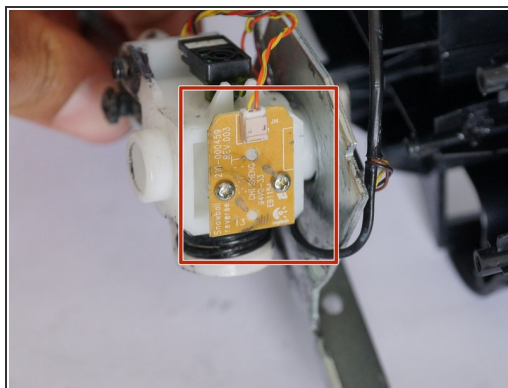
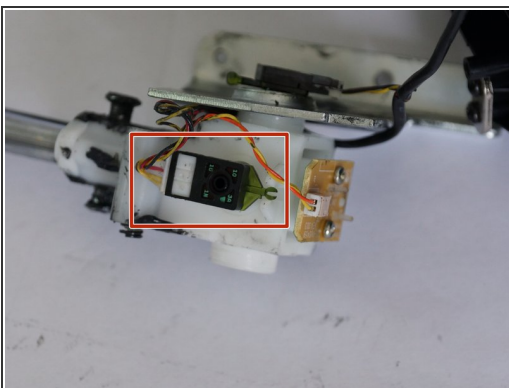
- Squeeze the two metal plates together and slowly pull up. The assembly is spring loaded and will fall apart if it is not squeezed.

Step 11



- Remove the shifter assembly and place it on a flat surface. Then remove the metal plate with the spring and ball bearing attached.
- ⓘ This is the hardest part of reassembling. Make sure to properly place the spring inside of the inner housing and the ball bearing on top. Place the other metal piece on top of it.

Step 12



- You will now have access to the two potentiometers on the sides of the assembly. Make sure they are properly connected and if need be, replace them by removing.

To reassemble your device, follow these instructions in reverse order.

