



iControl Networks Piper Teardown

iControl Networks Piper Teardown

Written By: Bryce Nesbitt



INTRODUCTION

Teardown of the iControl networks Piper "Home Awareness Device". This is a WiFi video camera with motion sensor, battery backup, and the ability to connect to Z-Wave sensors.

TOOLS:

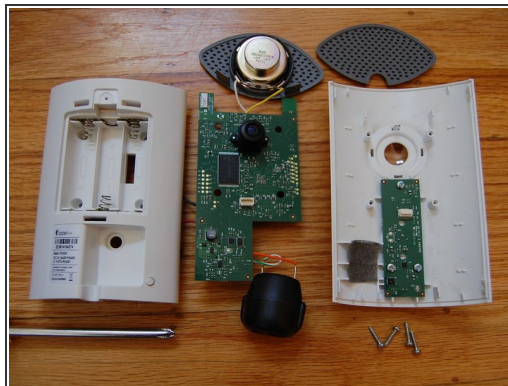
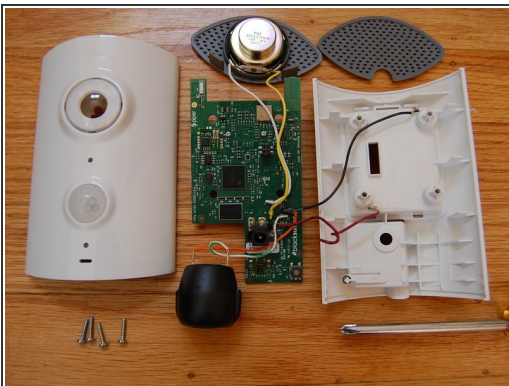
- [Essential Electronics Toolkit](#) (1)
-

Step 1 — Cracking Open The Case



- Piper is held together with four "security Philips" screws located in the battery case. Each screw has a post in the middle, meant to foil use of a standard screwdriver. However....
- If you don't have the right bit, just use a large #2 philips head screwdriver: the bit won't go deep enough to get tangled up in the security feature.
- Once the screws are out use a plastic spludger to pry open four plastic clips holding the shell together.

Step 2 — What's Inside



- Piper is dominated by a large speaker, and a Mallory PS-953Q security horn. It's loud. The CPU is a Texas Instruments TMS320DM365 media processor with a ZW0301 based Z-Wave module.
- Piper uses two tiny antennas, one for Z-Wave one for WiFi.
- That's it... a pretty simple layout.

