



iPhone 1st Generation Rear Panel Replacement

Written By: iRobot



INTRODUCTION

The shiny rear half of your iPhone case.



TOOLS:

- [Probe and Pick Set](#) (1)
- [SIM Card Eject Tool](#) (1)
- [Metal Spudger](#) (1)
- [Phillips #00 Screwdriver](#) (1)
- [iFixit Opening Tool](#) (1)
- [Spudger](#) (1)



PARTS:

- [iPhone Gen 1 Rear Panel](#) (1)

Step 1 — SIM Card



- Insert a SIM card eject tool or paper clip into the hole next to the headphone jack.
- Press down on the paper clip until the SIM card tray pops out.

Step 2



- Grasp the SIM card tray and slide it out of the iPhone.

Step 3 — Antenna Cover



- i** This image shows the two tabs and two catches located on the underside of the antenna cover. The two tabs at the top of the image must be pushed towards the black cover to release them.

Step 4



- !** Be sure to slide the metal spudger between the dock connector and the antenna cover, and not into the dock connector itself.
- Insert a metal spudger into the slot between the dock connector and the antenna cover. Gently pry up near the two tabs to create a small gap between the antenna cover and the silver front bezel.

Step 5



- Insert an iPod opening tool in the gap between the antenna cover and the front bezel. The wedge of the tool should be pointing towards the antenna cover. Slide the tool around the corner and up until you reach the metal backing.
- Repeat the same procedure on the other side of the dock connector.

Step 6



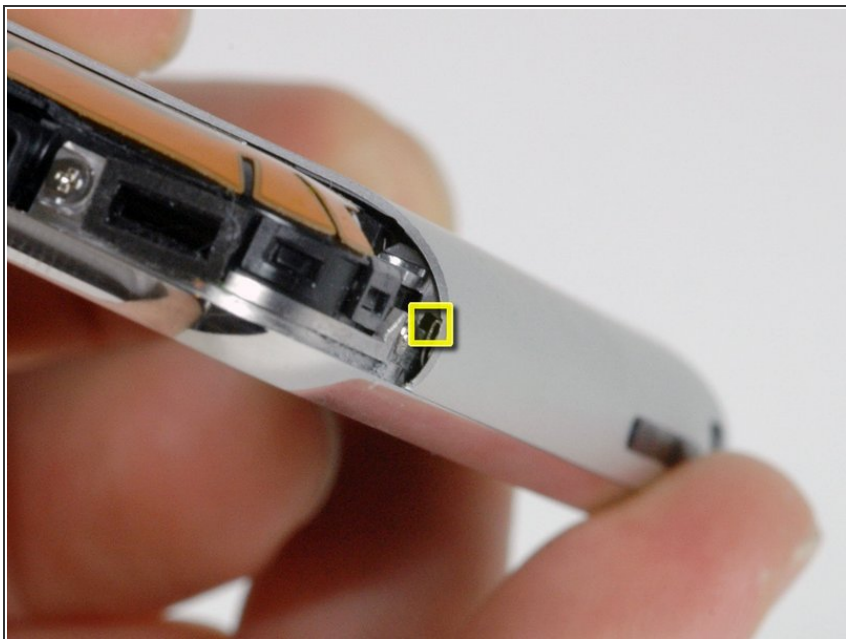
- Grasp the antenna cover on either side and slide it up and away from the iPhone. This requires some force. If it does not come free, ensure that the antenna cover is lifted up enough to free the catches.

Step 7 — Headphone Jack



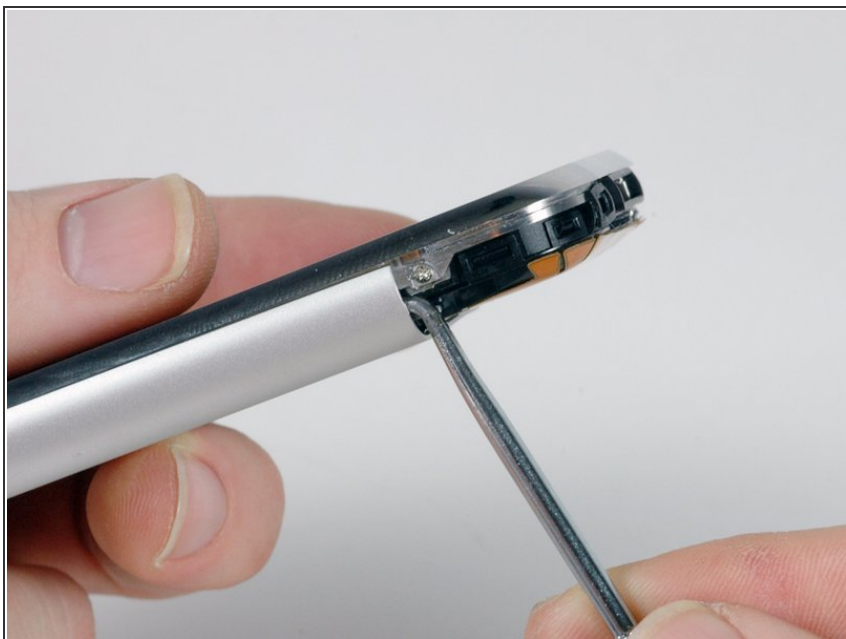
- Remove the three Phillips #00 screws securing the rear panel to the iPhone.

Step 8



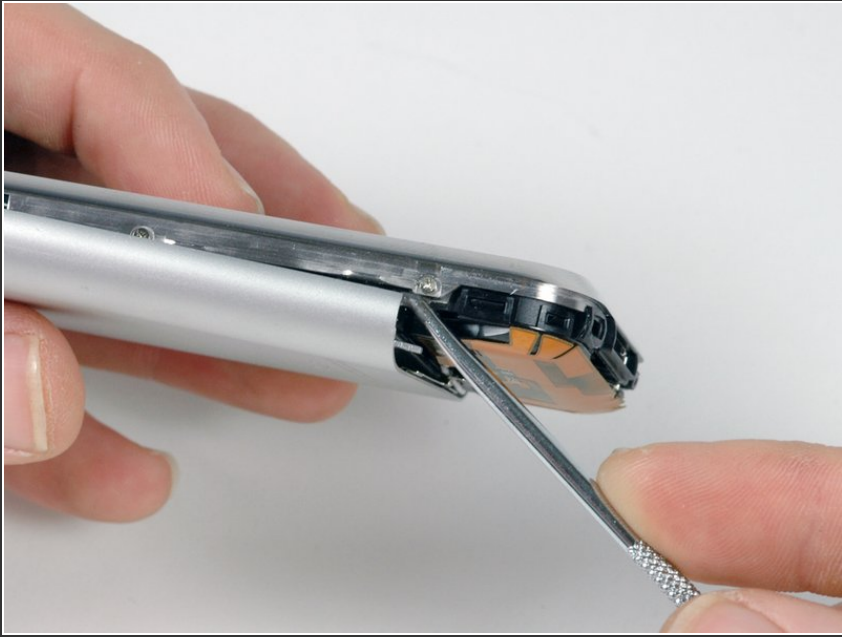
- i** Getting the iPhone open is a challenging feat, so don't get discouraged. Take a deep breath and make sure you have plenty of time to get the job done.
- The small square hole is the location to insert the dental pick in the next step.
- Insert the pointed end of a heavy-duty spudger into the space between the gray metal bar and the rear panel. Pry the panel up enough until you can get the tip of the iPod opening tool into the seam between the front bezel and rear panel.

Step 9



- Start removing the rear panel on the side with the buttons.
- Slide the dental pick completely into the square hole. You may need to wiggle the tool and apply a good amount of force to get it to go all the way.

Step 10



- Pry up the rear panel by pulling the dental pick counterclockwise in a quick motion. Apply force perpendicular to the plane of the display assembly. You may be afraid to go fast, but going slowly is more likely to bend the case.

Step 11



- Use a spudger to free the rear panel from the iPhone along the corner and top.
- ⓘ The rear panel is still attached to the iPhone by the headphone jack cable, so don't entirely remove the rear panel from the iPhone just yet.

Step 12



- Repeat the same procedure on the other side of the iPhone. Slide the dental pick completely into the square hole. You may need to wiggle the tool and apply a good amount of force to get it to go all the way.

Step 13



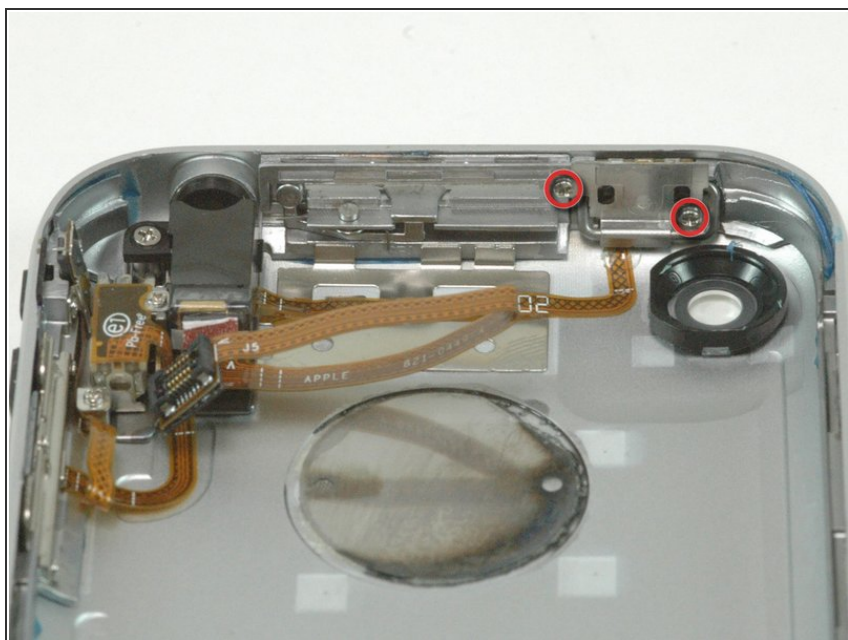
- Pry up the rear panel by pulling the dental pick counterclockwise in a quick motion. Apply force perpendicular to the plane of the display assembly. You may be afraid to go fast, but going slowly is more likely to bend the case.
- The rear panel is still attached to the iPhone by the headphone jack cable, so don't entirely remove the rear panel from the iPhone just yet.

Step 14



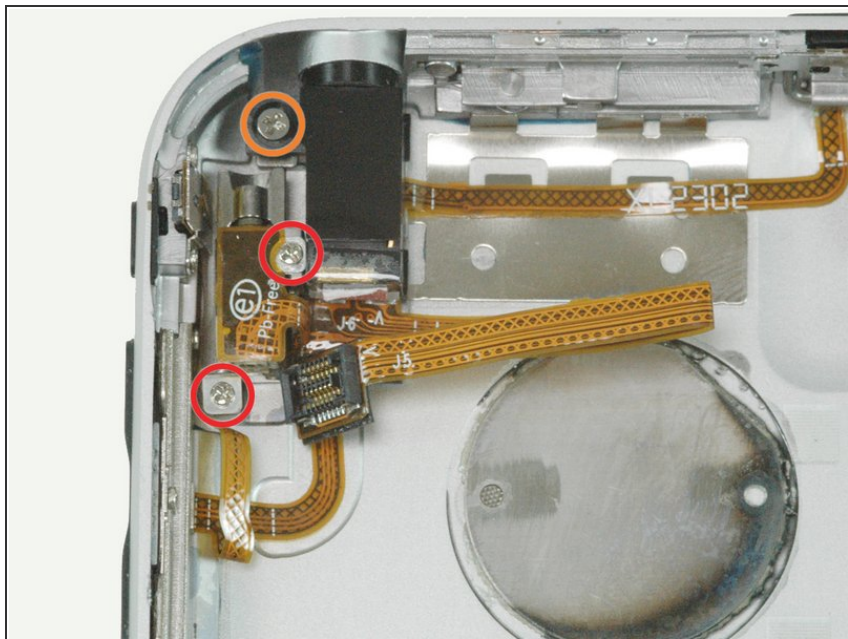
- **i** Make sure the phone is off before disconnecting the headphone jack cable.
- Use a spudger to disconnect the headphone jack cable from the logic board.

Step 15



- Remove the two Phillips #00 screws securing the on/off switch to the rear panel.

Step 16



- Remove the following 3 screws:
 - Two Phillips #00 screws securing the vibrator to the rear panel.
 - One larger head and longer Phillips #00 screw securing the headphone jack to the rear panel.

Step 17



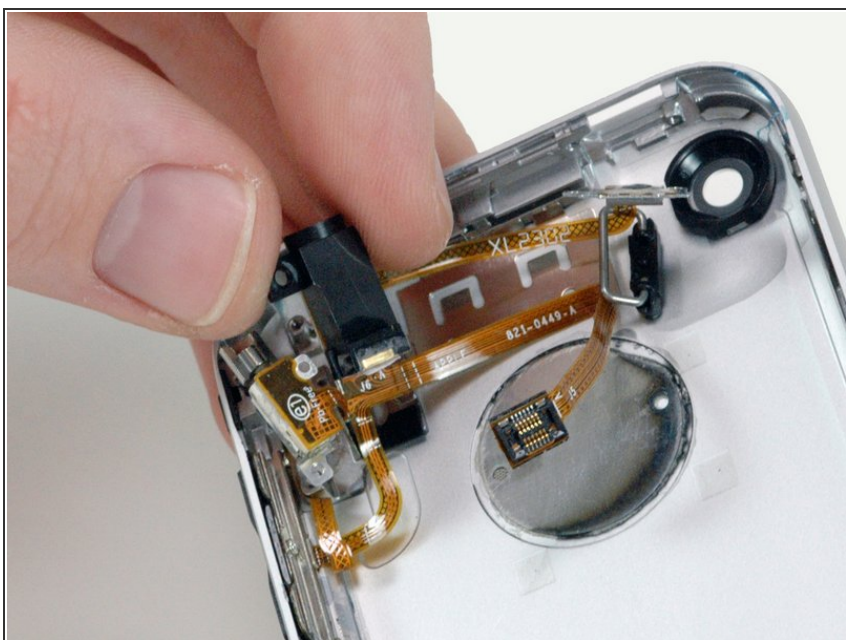
- Grasp the metal screw plate attached to the on/off switch and lift slightly up and away from the rear panel. The button should come with the cable.
- Gently peel up the on/off switch ribbon cable. Be sure to pull near where the ribbon cable is glued to the rear panel.

Step 18



- The headphone jack is slightly recessed into the rear panel. First slide the headphone jack away from its housing and then lift it up slightly (only 1/4 inch or 1/2 centimeter) so that it is no longer in the rear panel.

Step 19



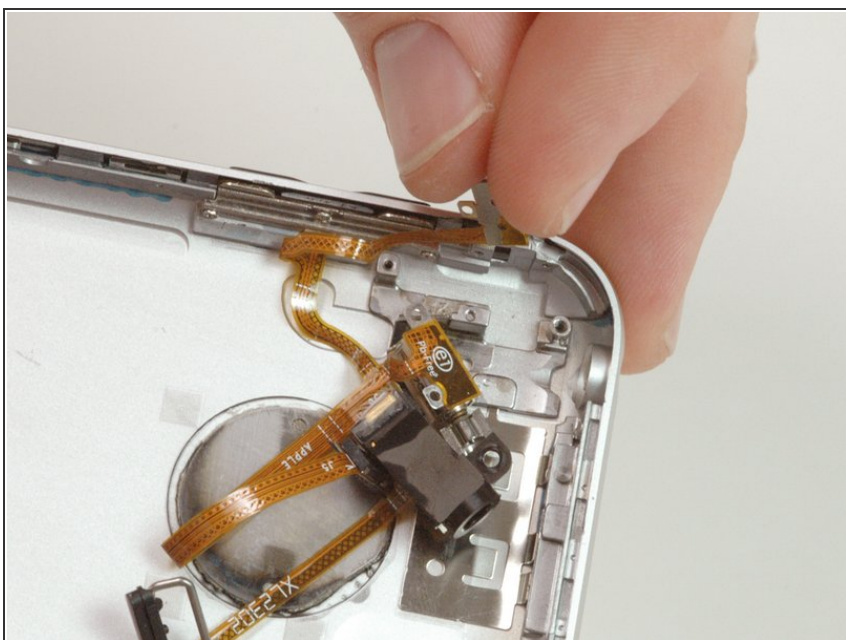
- Grasp the headphone jack at the tip and gently lift up, pulling the vibrator out of the rear panel.

Step 20



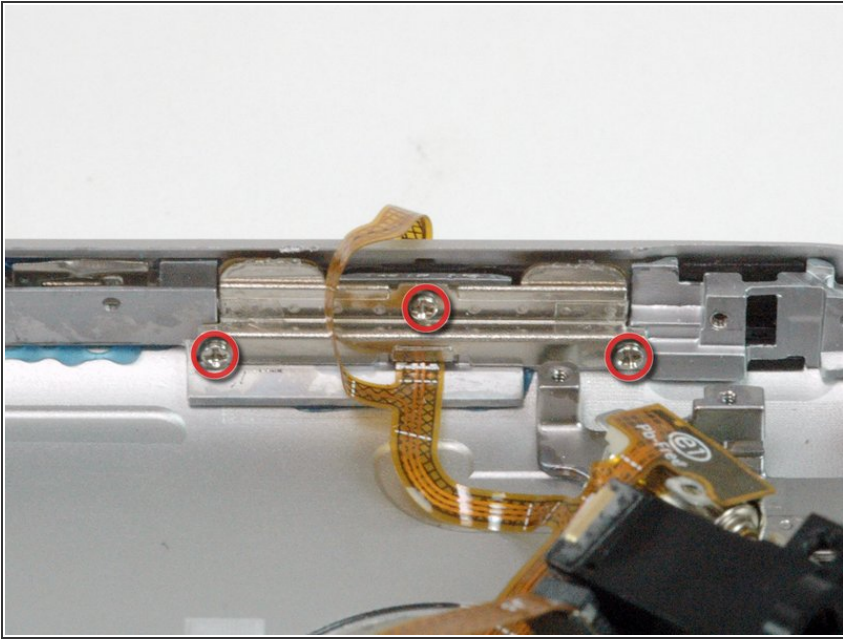
- Remove the two Phillips #00 screws securing the silent/ring switch to the rear panel.
- Pry off the metal backing with the screw holes and save for securing the replacement switch.

Step 21



- Grasp the silent/ring switch and lift it up to reveal the screw beneath.

Step 22



- Remove the three Phillips #00 screws securing the volume switch to the rear panel.

Step 23



- Lift the headphone jack assembly out of the rear panel.

Step 24 — Rear Panel



- Rear panel remains.

To reassemble your device, follow these instructions in reverse order.