



Canon PowerShot S410 LCD Screen Replacement

This installation guide will help you remove...

Written By: kubayubay



INTRODUCTION

This installation guide will help you remove your broken LCD and install in a new replacement.


TOOLS:

Phillips #0 Screwdriver (1)

Tweezers (1)

Step 1 — Battery



 Turn the camera with the bottom side facing up.

- Locate the panel labeled "Batt. Open"
- Place your finger on the panel and slide it in the direction of the arrow.
- The slot will swing open revealing the battery pack.

Step 2



- Pull the orange lever and the battery will spring out slightly.

Step 3



- Grasp the battery and fully pull it out of its slot.
- ☑ When placing the new battery back in the slot, the arrow on the battery must align with the arrow on the camera.

Step 4 — Back Cover



- ① Start by laying the camera flat with the LCD screen facing up.
- Using the Phillips #0 screwdriver, remove the 3.8mm screw in the upper right corner.

Step 5



- ① Position the camera with the bottom facing up.
- Twist the screwdriver counter-clockwise to remove the 4.8mm screw.
- Repeat to remove the two 2.3mm screws.

Step 6



① Position the camera so that the rubber "AV Out Digital" tab is facing upward.

- Slide the rubber tab to reveal the bottom screw.
- Using the screwdriver, remove the two 3.7mm screws.

Step 7



① Turn the camera with the back side facing you.

- Grip the edges of the back plate, and carefully slide it off.

① If there is any resistance in movement, double check there are no screws left in the chassis.

Step 8 — Front Cover



① Orient the camera as in the picture.

- Remove the two 2.3mm outer screws using the Phillips #0 screwdriver.
- Remove the two 3.8mm screws near the strap bracket.
- Remove the small panel covering the mounting bracket.
- Remove the door covering the memory card.

Step 9



- ① Rotate the camera so that the bottom side is facing you.
- Remove the 3.8mm screw below the mounting bracket using the Phillips screwdriver.

Step 10



- ① Rotate the camera so that the front is facing you.
- Grasp the sides of the front cover and carefully pull the front panel off of the camera.

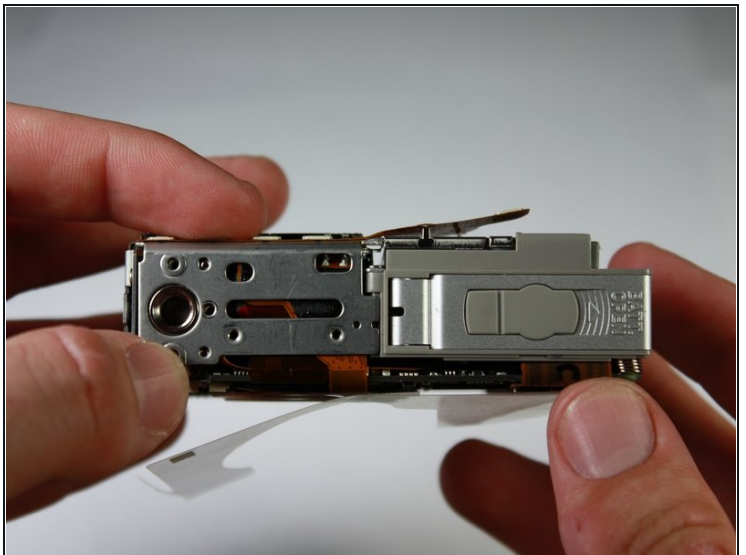
Step 11 — LCD Screen



① Position the camera so that the motherboard is facing you.

- A fingernail or spudger can be used to remove the plastic flap covering the motherboard.

Step 12



① Turn the camera so that the bottom side is facing you.

- Remove the 2.1mm screw using the Phillips #0 screwdriver
- Grab the sides of the bottom panel and lift to expose the ribbon cable.

Step 13



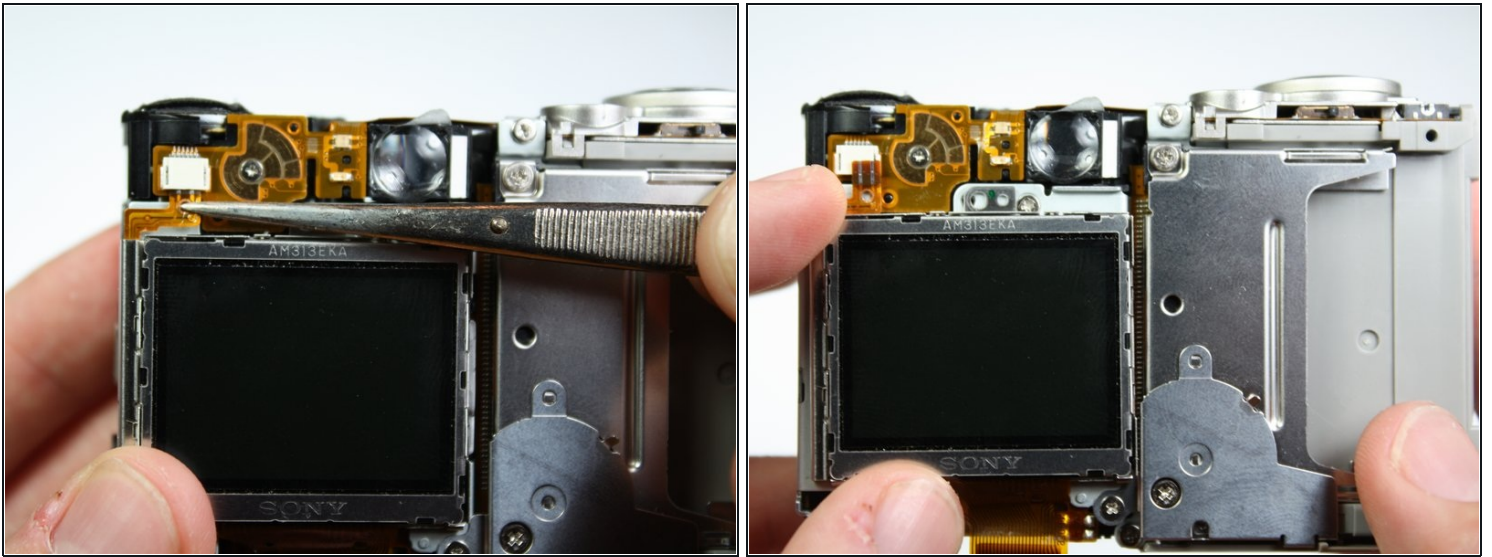
- ① Turn the camera so that the motherboard is facing you.
- Using your fingernail, open the black clip holding the ribbon cable.
- Gently pull out the ribbon cable in the direction of the cable using your fingers or tweezers.

Step 14



- ① Turn the camera so that the LCD screen is facing you.
- Remove the two 2.1mm screws on the aluminum tabs of the LCD screen using a screwdriver.

Step 15



- Using a pair of tweezers, carefully pull the top ribbon cable out of the slot.
- Grasp the sides of the LCD screen and lift off of the camera.

To reassemble your device, follow these instructions in reverse order.