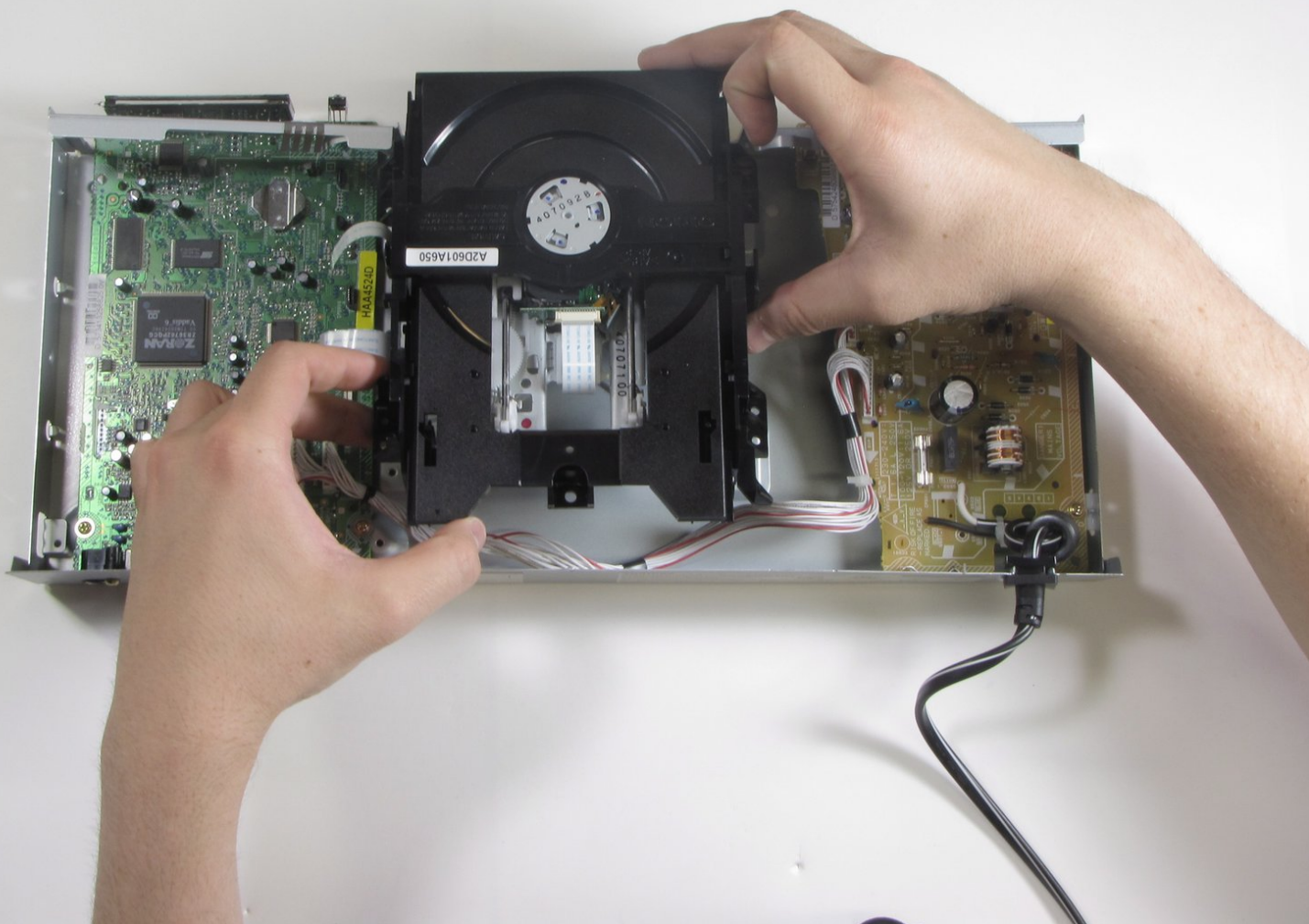




# Toshiba SD-K740 Disc Drive Replacement

This guide gives instructions on how to remove...

Written By: Joe Murphy



---

## INTRODUCTION

This guide gives instructions on how to remove the disc drive of the Toshiba SD-K740 DVD player.

---



### TOOLS:

- [Phillips #2 Screwdriver](#) (1)
-

## Step 1 — Top Panel



**⚠ Unplug the DVD player before beginning.**

- Remove the three 7.7 mm screws from the back panel using a Phillips #0 screwdriver.

## Step 2



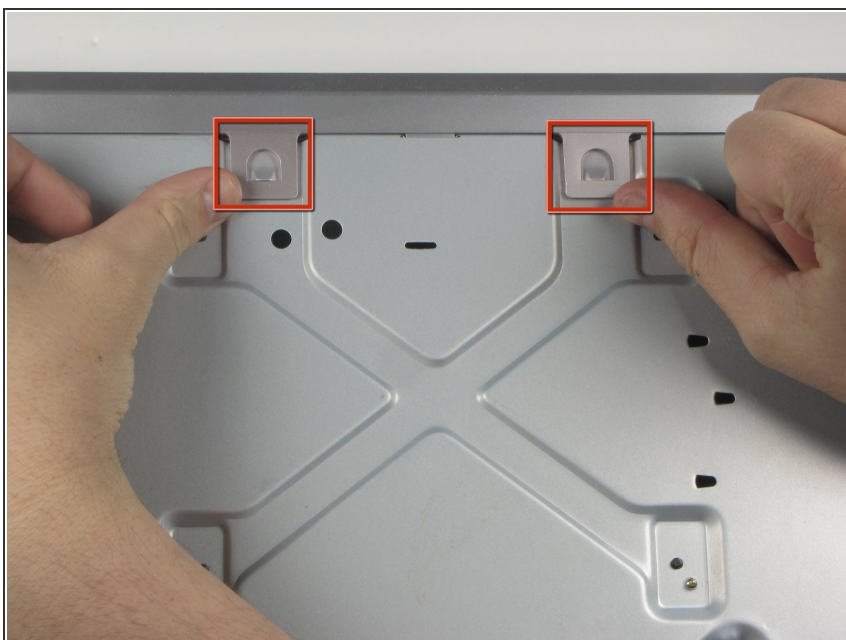
- Turn the DVD player on its side.
- Remove the 7.7 mm screw.
- Flip the DVD player onto its other side.
- Remove the 7.7 mm screw.

### Step 3



- Flip the DVD player over onto its front face.
- Remove the back panel by lifting up and pulling it towards yourself.

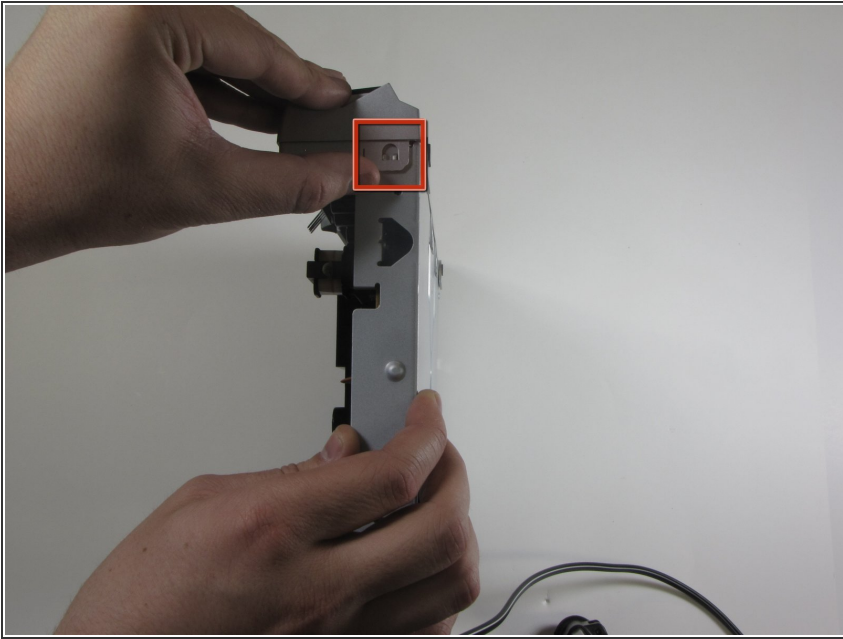
### Step 4 — Front Panel



- ① Flip the DVD player so its top is sitting on your working surface.
- Lift and push away the two tabs located in the middle of the player.
- ⚠ The front panel will not detach during this step, so do not force it.

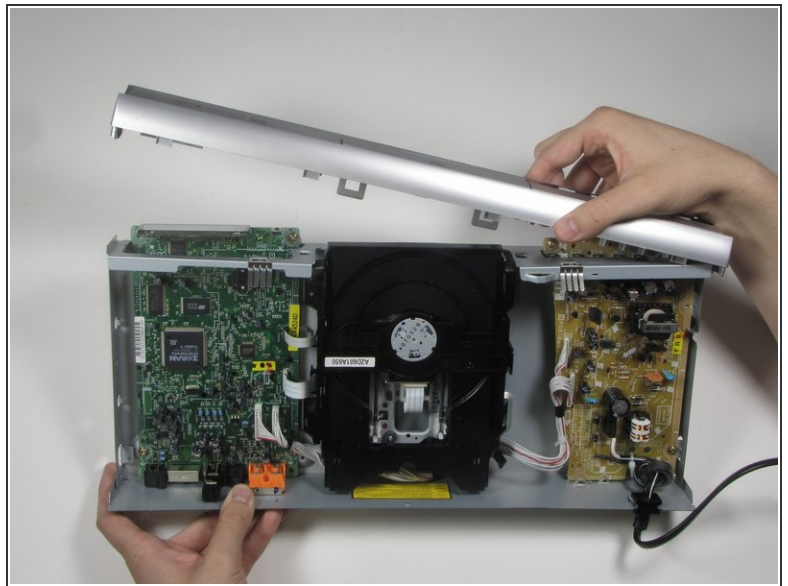


## Step 5



- ❗ Flip the DVD player on its side.
- Lift and slide forward the single tab on the side.
- ⚠ The front panel will not detach during this step, so do not force it.

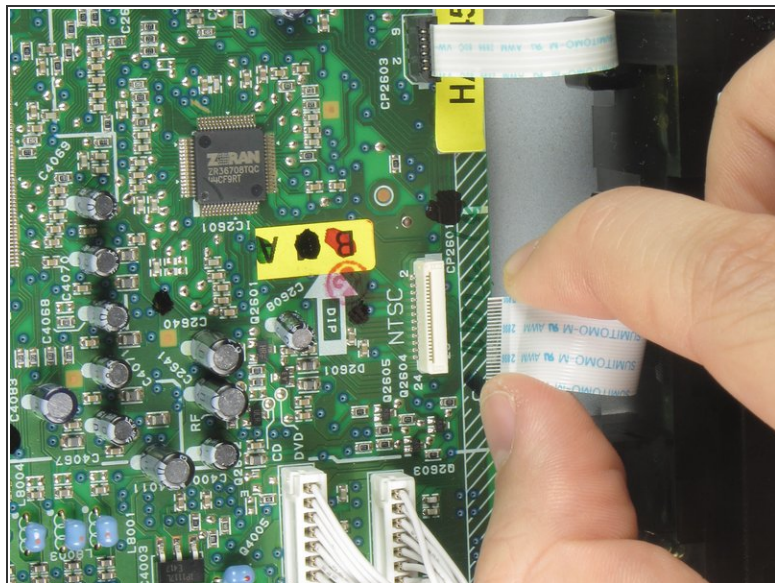
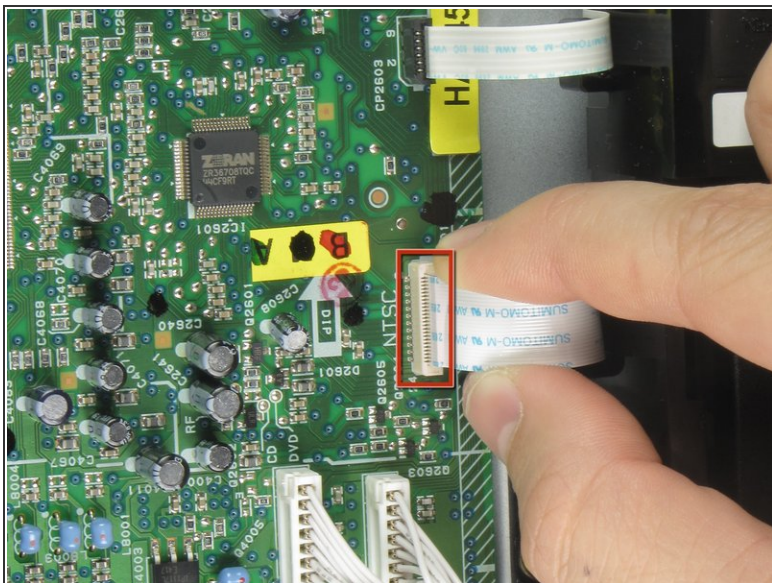
## Step 6



- Grasp the front panel and pull forward to your right to remove it.

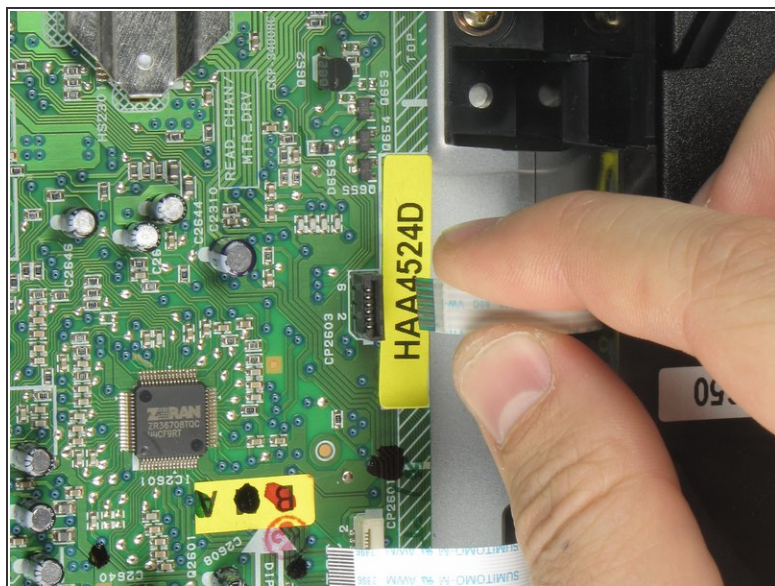
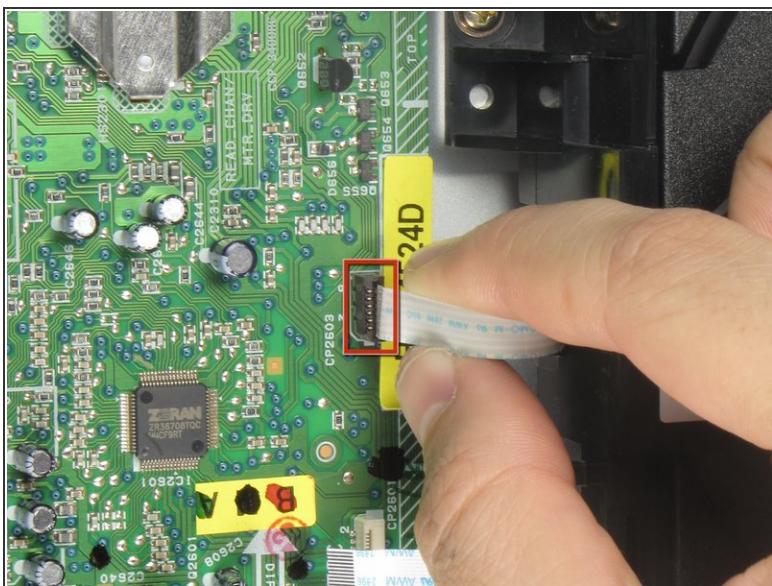


## Step 7 — Disc Drive



- Remove the first of three ribbon cables on left hand side of disc drive by pulling vertically.

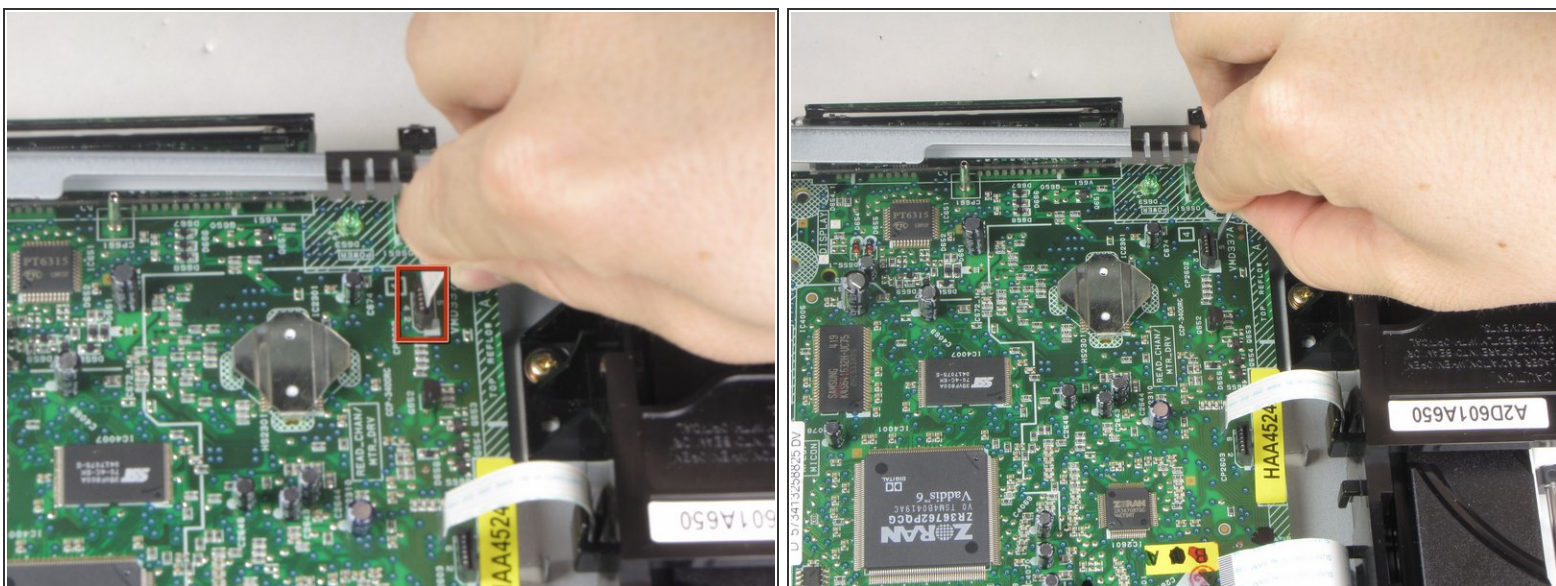
## Step 8



- Remove the second of three ribbon cables on left hand side of disc drive by pulling vertically.

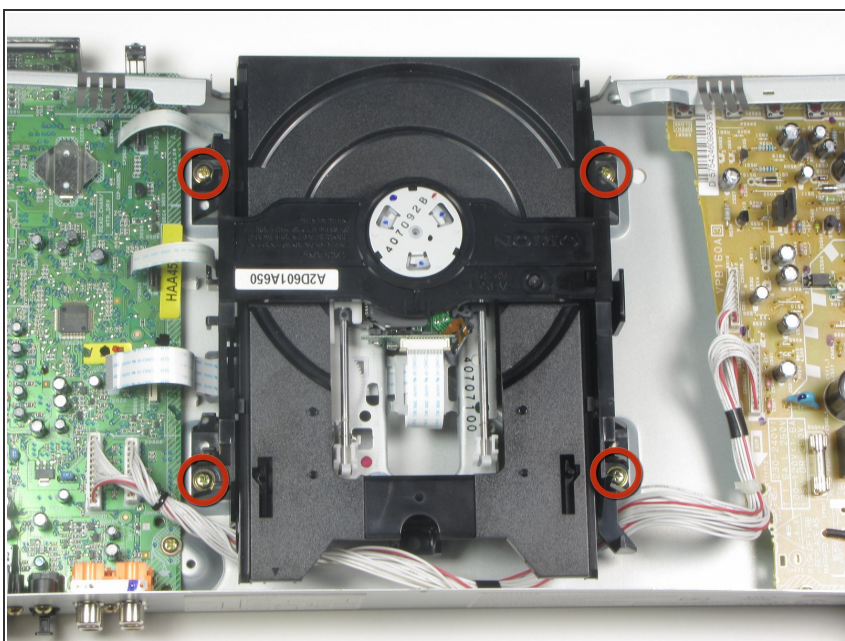


## Step 9



- Remove the third of three ribbon cables on left hand side of disc drive by pulling vertically.

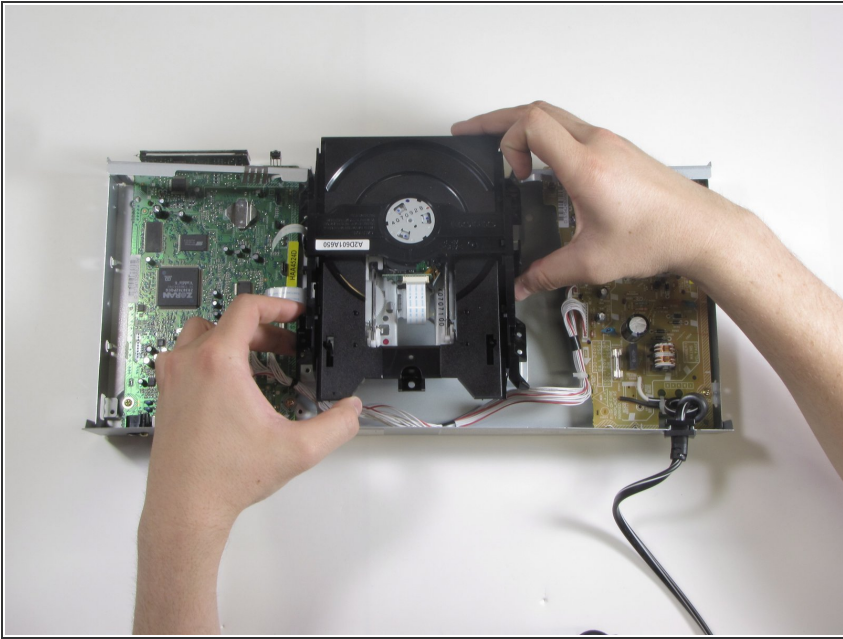
## Step 10



- Remove the four screws holding the disc drive in place using a #0 Phillips screwdriver.



## Step 11



- Lift disc drive vertically to remove.

To reassemble your device, follow these instructions in reverse order.