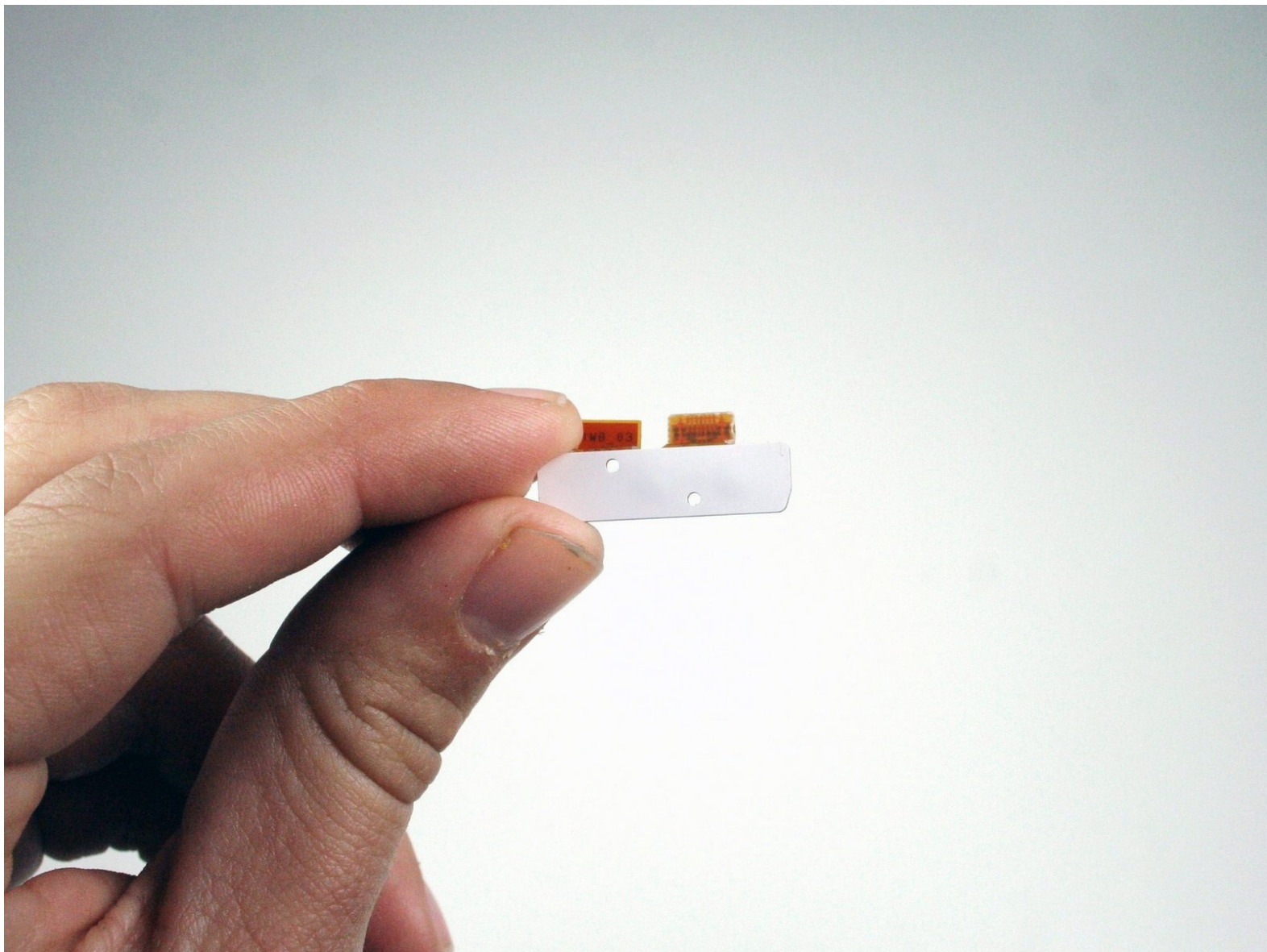




# Disassembling Nokia 2366i Side Buttons

Written By: Jonathan Newman



---

# INTRODUCTION

Removing the side buttons on the phone.

---



## TOOLS:

- [Phillips #00 Screwdriver](#) (1)
  - [Spudger](#) (1)
  - [T6 Torx Screwdriver](#) (1)
-

## Step 1 — Battery



- Turn off the phone.
- ⓘ Position the phone so that the back side is in view.

## Step 2



- Apply pressure on the cover while simultaneously sliding the cover downward.
- Remove the back battery cover.

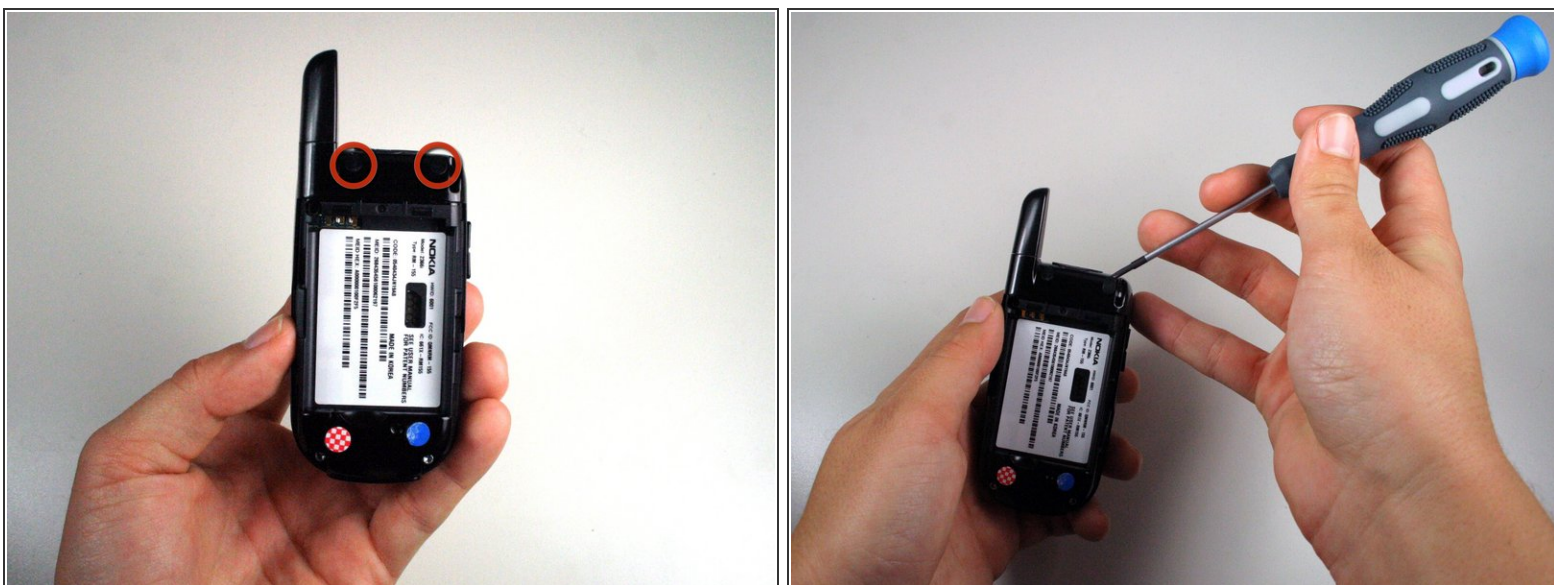


## Step 3



- Insert the spudger between the base of the phone and the phone battery.
- Position the phone so that the battery won't fall out of the phone.
- Carefully lift the battery out of the phone.
- ⓘ The battery lifts out of the phone easily.

## Step 4 — Rear Case



- Use a Phillips #00 screwdriver or your fingers to remove the rubber tabs at top back of the phone.

## Step 5



- Remove four 5mm screws from the back of the phone using a T6 Torx screwdriver:
  - 2 screws at the bottom
  - 2 screws at the top

## Step 6



- ⓘ Rotate the phone clockwise so the edge is facing you.
- Insert the spudger in tabs between the outer casing and the inside frame.
- Slide the spudger upwards.
- ⓘ This will remove the rear case of the phone.

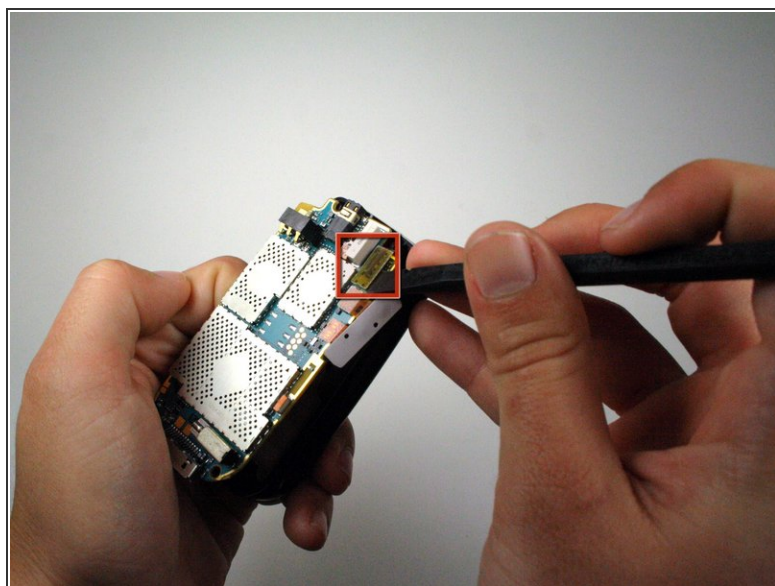


## Step 7



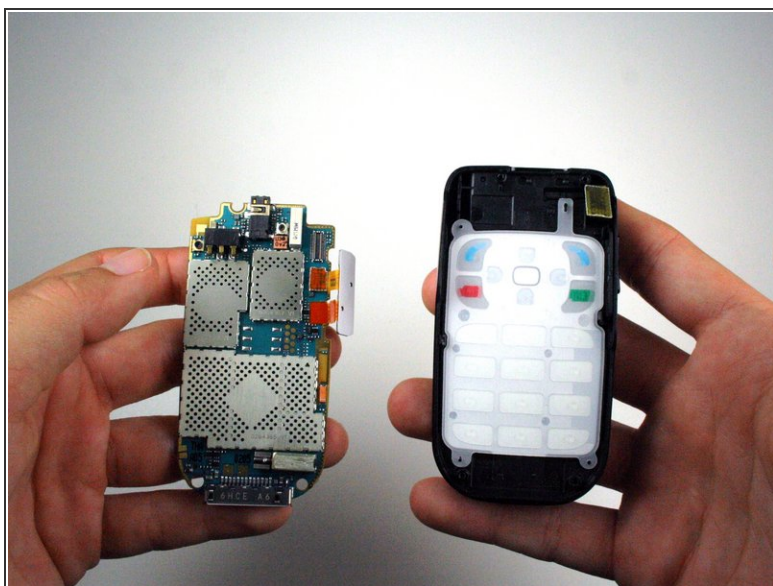
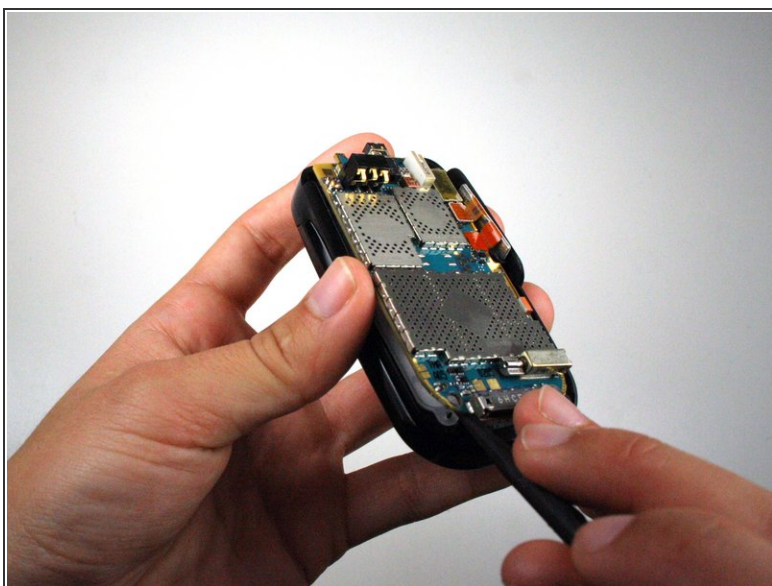
- The phone should now be in two different sections.
  - 1) The rear case of the phone.
  - 2) The motherboard and the rest of the phone.

## Step 8 — Motherboard



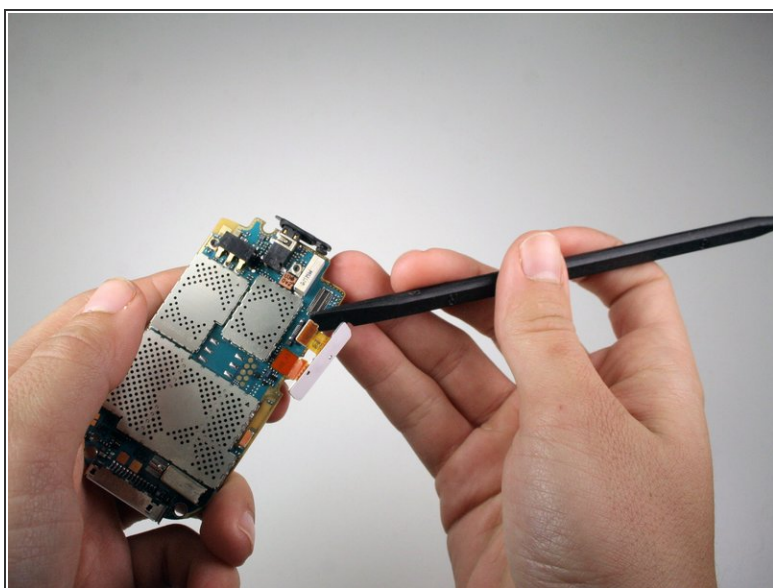
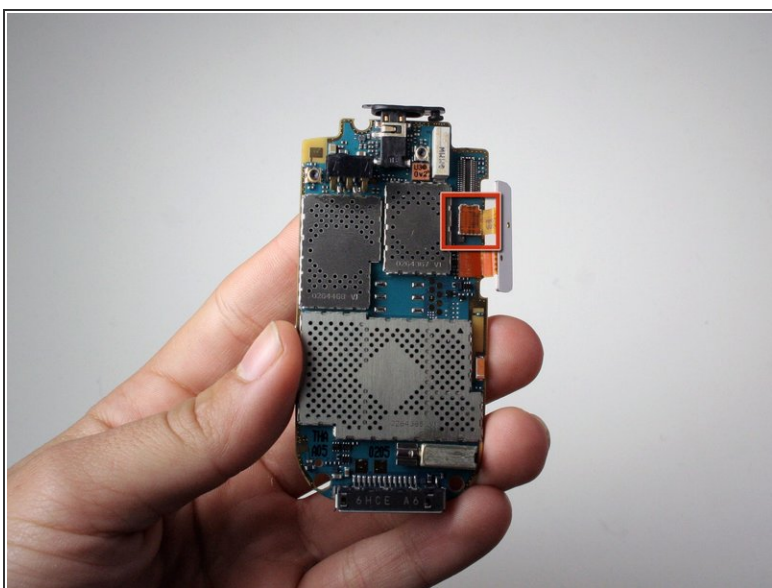
- Use the spudger to lift off the yellow clip near the top right corner of the motherboard.

## Step 9



- ① Rotate the phone counterclockwise so that the edge is facing you.
- Use the spudger to lift the motherboard out of the base of the phone.
- Remove the motherboard from the base of the phone.

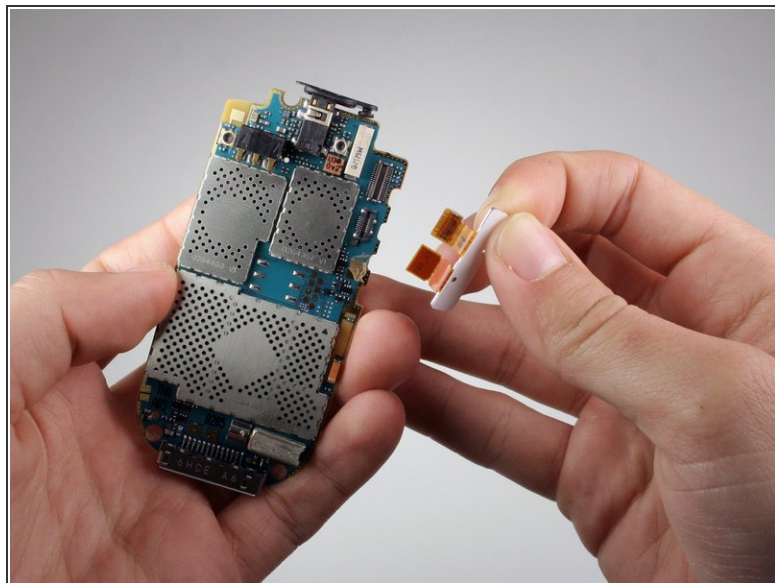
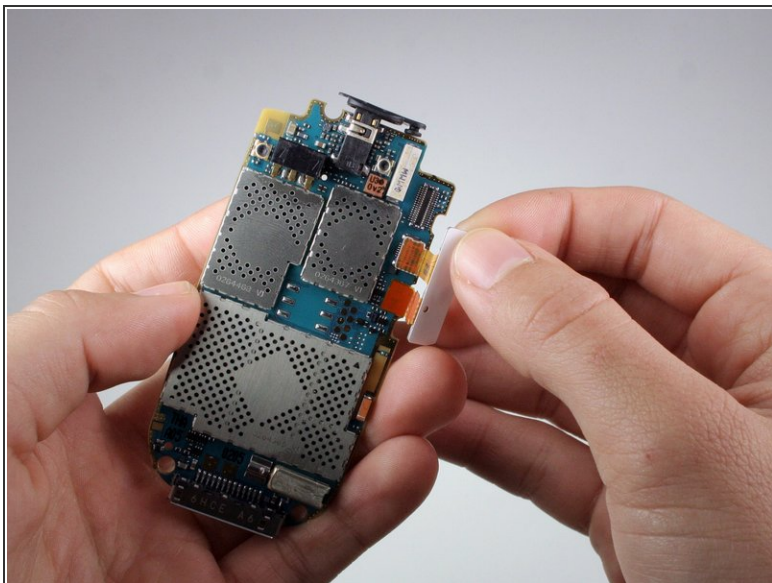
## Step 10 — Side Buttons



- Use the spudger to pull off the top orange chip attached to the white tab.



## Step 11



- Lightly pull up on the white tab to remove the orange tab from the logic board.
- ⓘ Don't worry about the glue on the bottom orange tab. It's only there to keep the side button in place.

To reassemble your device, follow these instructions in reverse order.