



Disassembling the Canon PowerShot A200 Case

These are instructions to disassemble the...

Written By: Daniel Stone



INTRODUCTION

These are instructions to disassemble the camera case so that internal components can be accessed.

This is a prerequisite guide for repairs to the Canon PowerShot A200.

TOOLS:

[Phillips #00 Screwdriver](#) (1)

[iFixit Opening Tool](#) (1)

Step 1 — Disassembling the Canon PowerShot A200 Case



- Use a Phillips #00 screwdriver to remove the two screws at the bottom of the camera.

Step 2



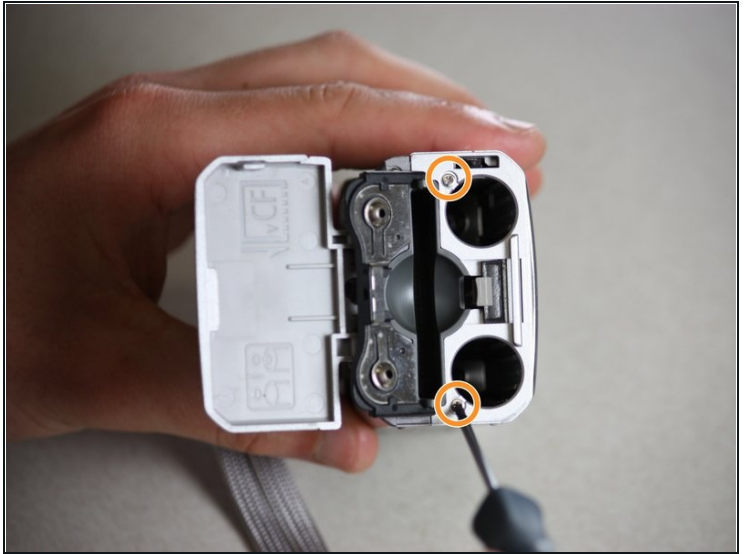
- Locate a screw and a rubber covering on the left side of the camera. Slide the rubber covering to expose a second screw.
- Remove both screws with the Phillips #00 screwdriver.

Step 3



- Open the battery compartment on the right side of the camera by pushing slightly in the direction of the arrow.
- ⓘ Be sure to remove the memory card.
- Remove the two screws by the memory card slot using the Phillips #00 screwdriver.

Step 4



- Pull the grey tab towards the back of the camera. Lift the black cover to expose the battery slots.
- Remove the two visible screws with the Phillips #00 screwdriver.
- ☑ During reassembly, the holes for these screws must align properly with the *interior* of the camera body. Then the black battery cover must lie flat and be held in place by the grey tab.

Step 5



- Remove the screen battery located to the left of the screen.

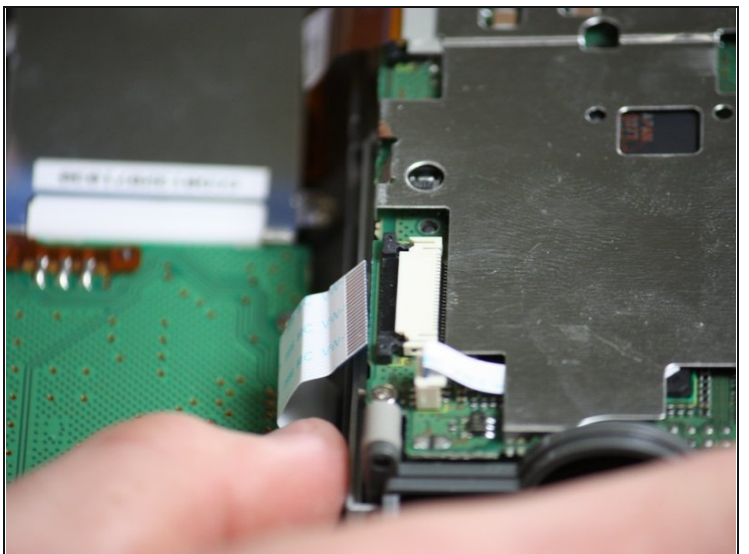
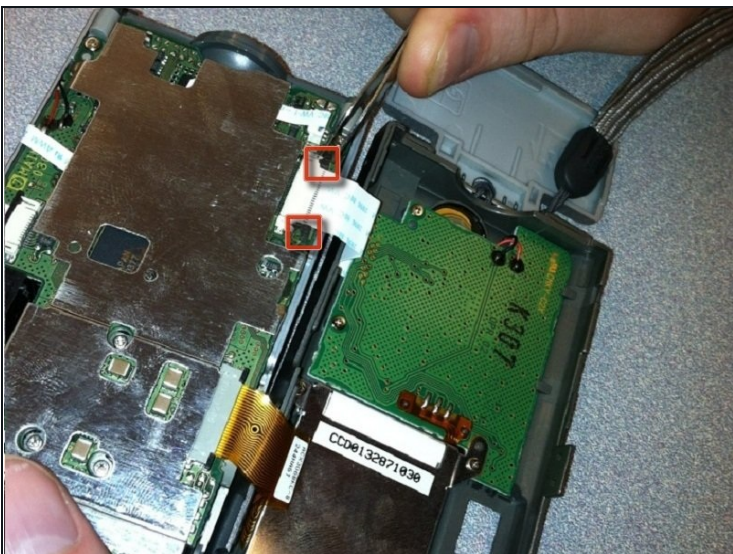
Step 6



- Gently pull the camera apart from the top.

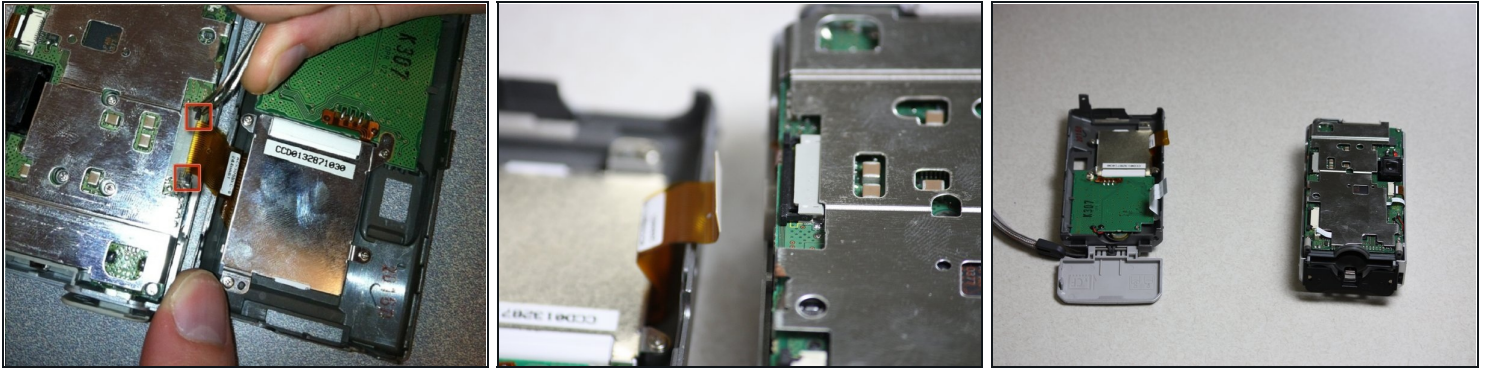
⚠ Be careful. The two halves are still attached by two short ribbons at the bottom of the camera.

Step 7



- Locate the black tabs on either side of the white ribbon.
- Use the metal [tweezers](#) to gently move these tabs to the outside edges of the ribbon.
- Gently pull the white ribbon out from its connection.

Step 8



- Locate the black tabs on either side of the orange ribbon.
 - Use the metal tweezers to gently move these tabs to the outside edges of the ribbon.
 - Gently pull the orange ribbon out of its connection.
- ① Your camera will now be in two separate pieces.
-

To reassemble your device, follow these instructions in reverse order.