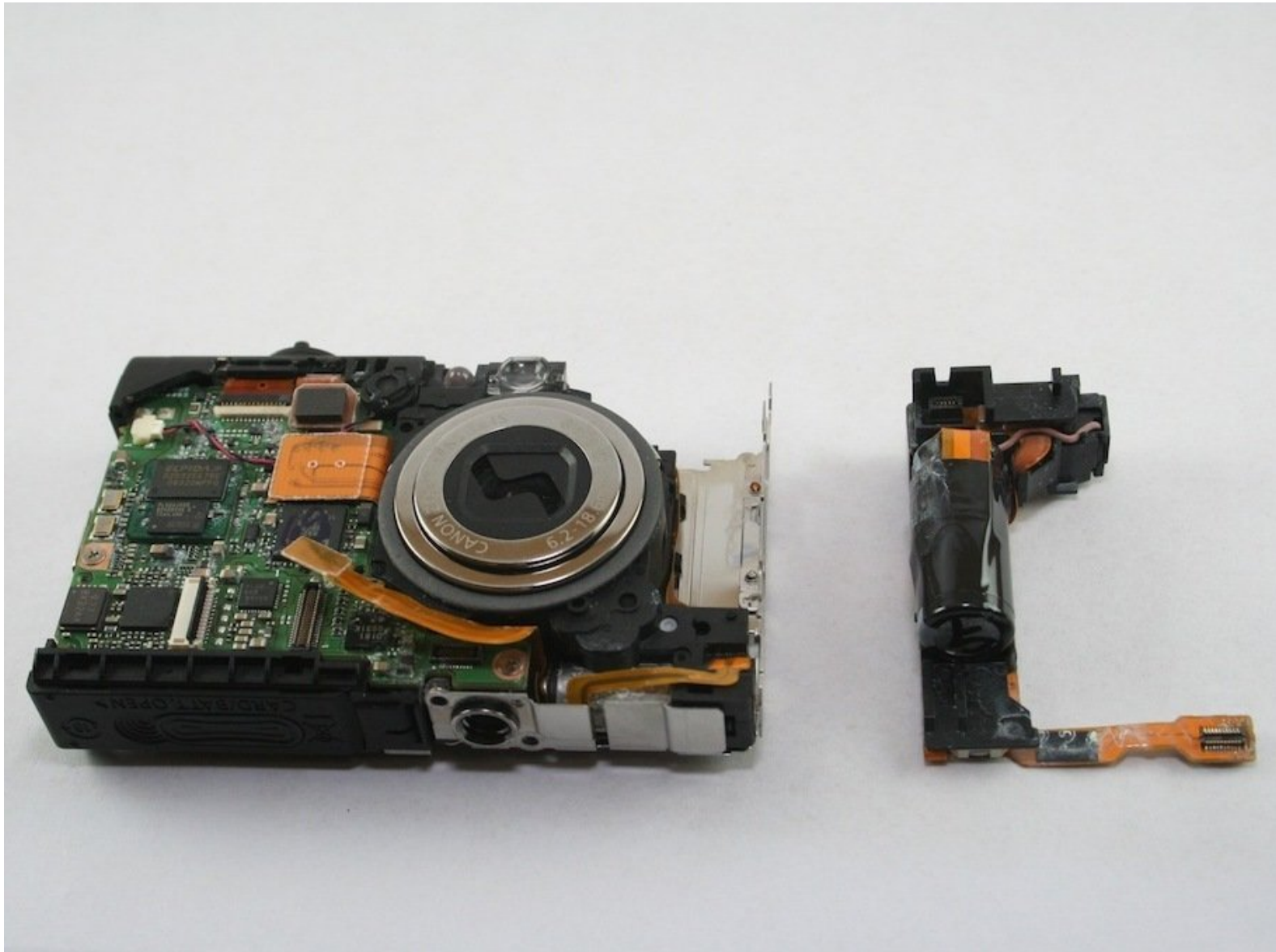




Canon PowerShot SD1100 IS Flash Assembly Replacement

This guide will show how to remove the flash assembly, including the capacitor.

Written By: Tyler Grossheim



INTRODUCTION

Use the guide to remove the flash assembly.



TOOLS:

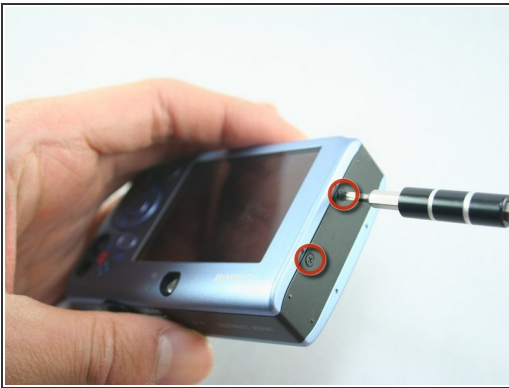
- [Phillips #00 Screwdriver](#) (1)
 - [Spudger](#) (1)
-

Step 1 — Front and Rear Cover



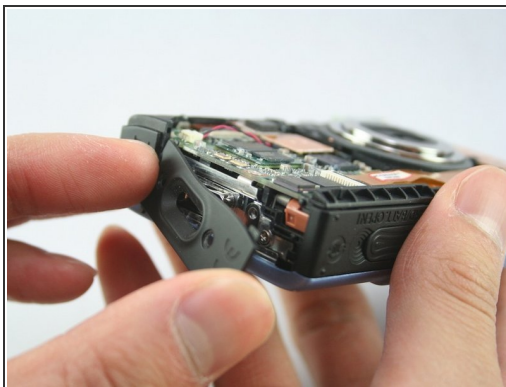
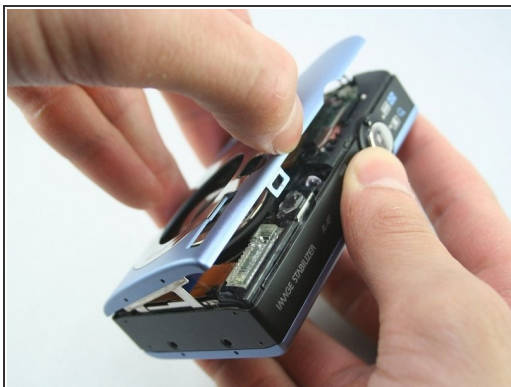
- Remove wrist strap and battery.

Step 2



- Remove 2 screws from each side of the camera (4 total, 0.102 in).
 - Remove 2 screws from the bottom on the camera (0.138 in).
- ⚠ Do not mix the 4 side screws with the 2 bottoms ones; they are different sizes.

Step 3



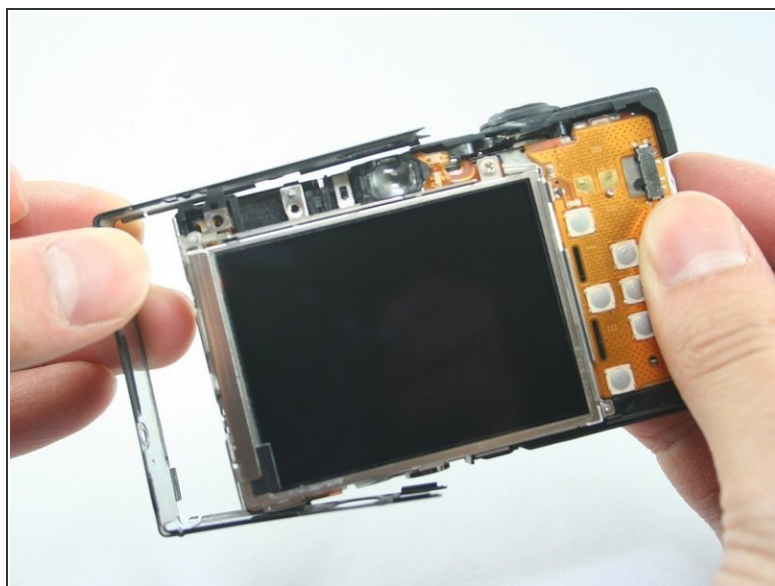
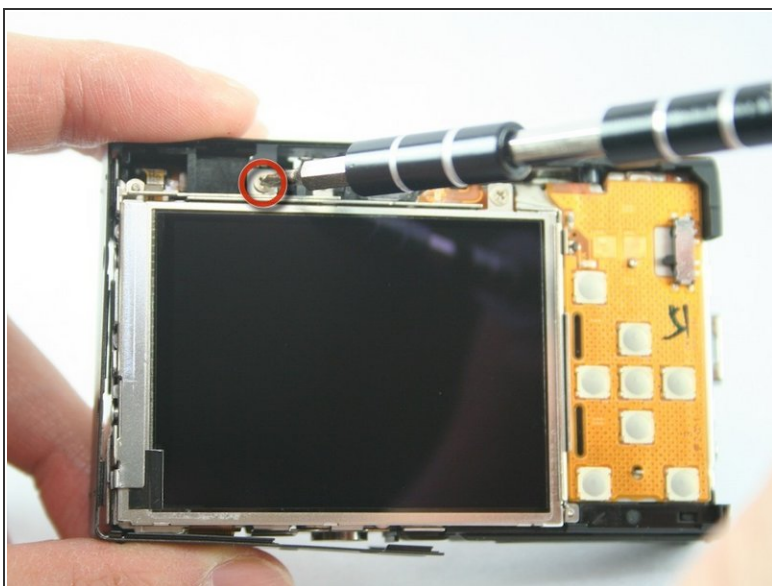
- Gently pull off the front cover.
- ⓘ The plate on the side should come off.
- Gently pull off the back cover.

Step 4



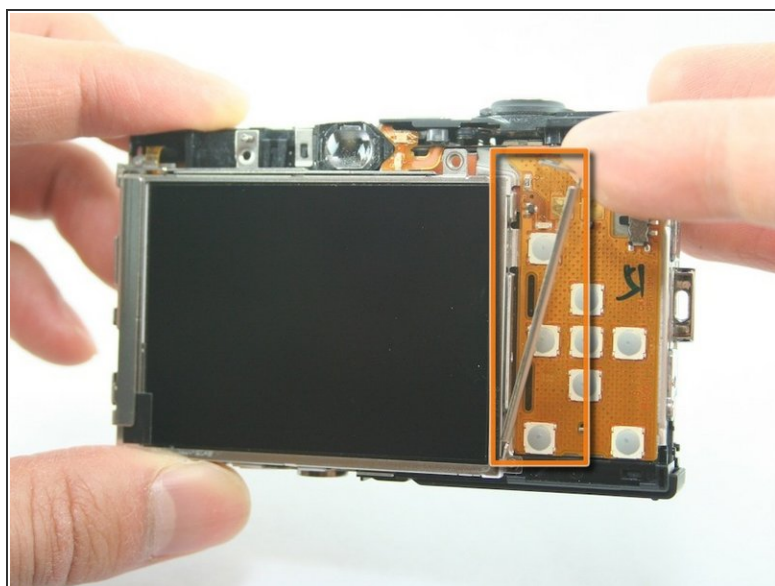
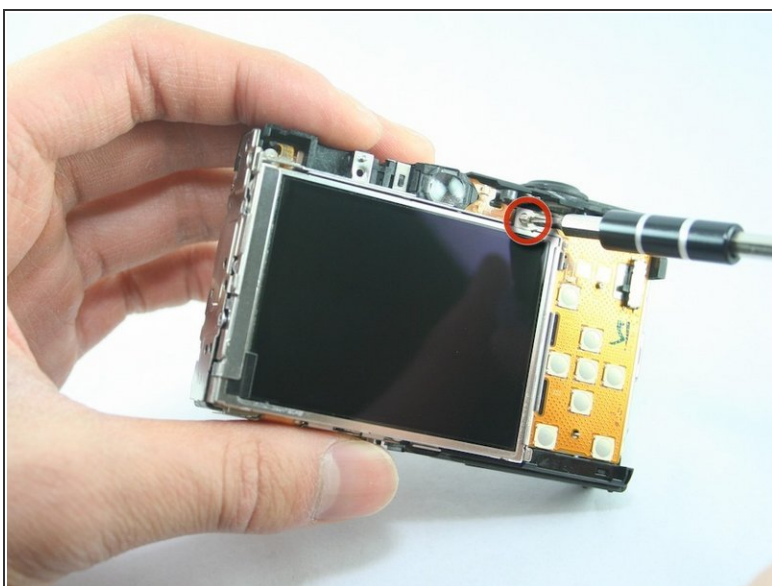
- The cases should now be removed.

Step 5 — LCD screen



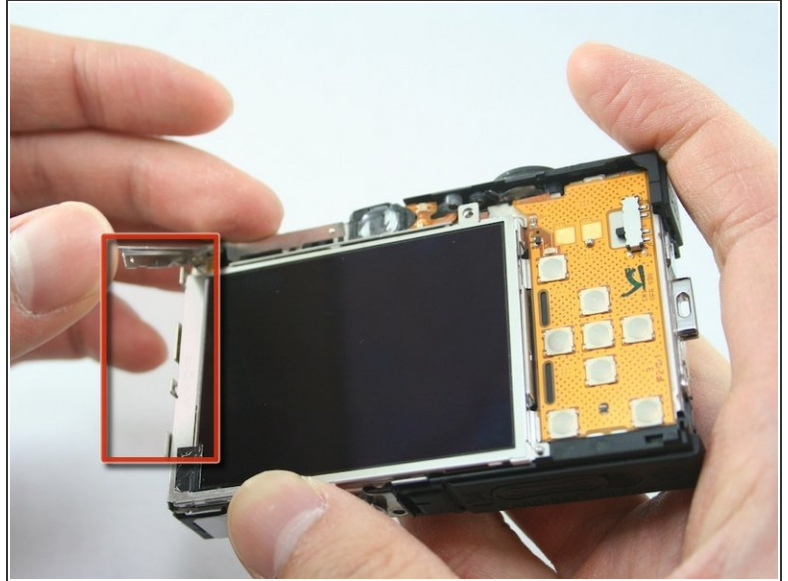
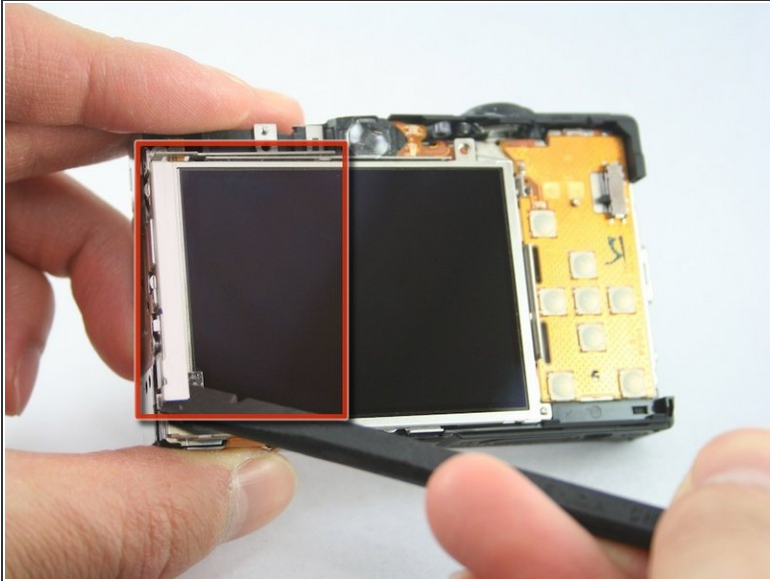
- Remove the top-left screw above the LCD screen (0.100 in).
- Remove the C-shaped plate from the side of the LCD screen.

Step 6



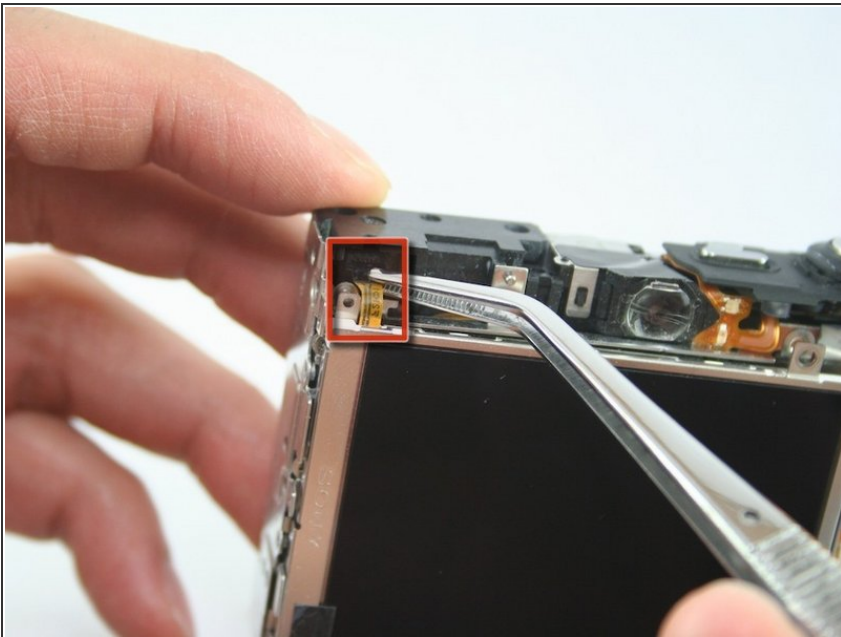
- Remove the screw from the top-right of the LCD screen (0.098 in).
- Remove the L-shaped bar from the right of the LCD screen.

Step 7



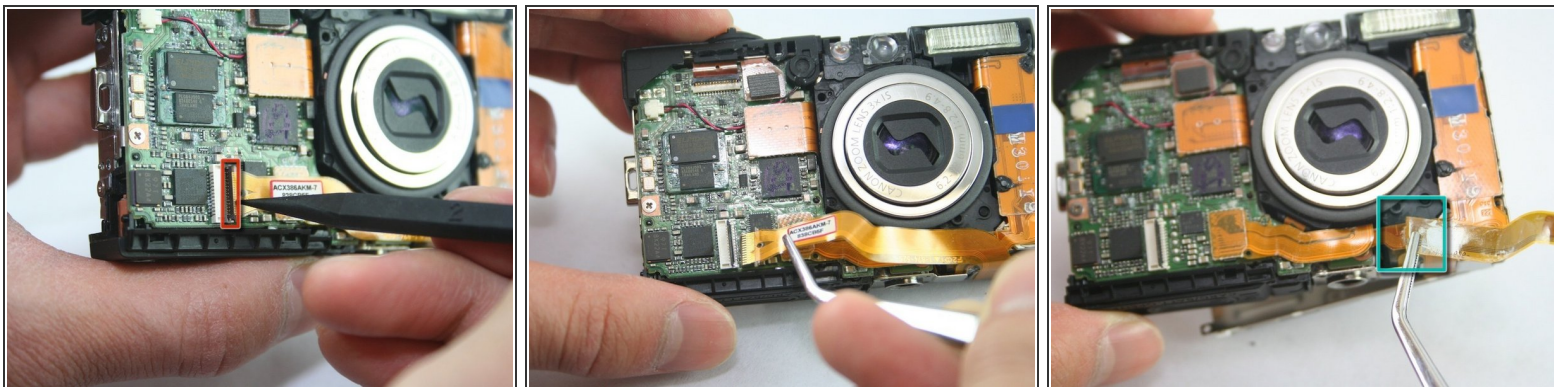
- Use the spudger to remove the L-shaped bar from the left-side of the LCD screen.

Step 8



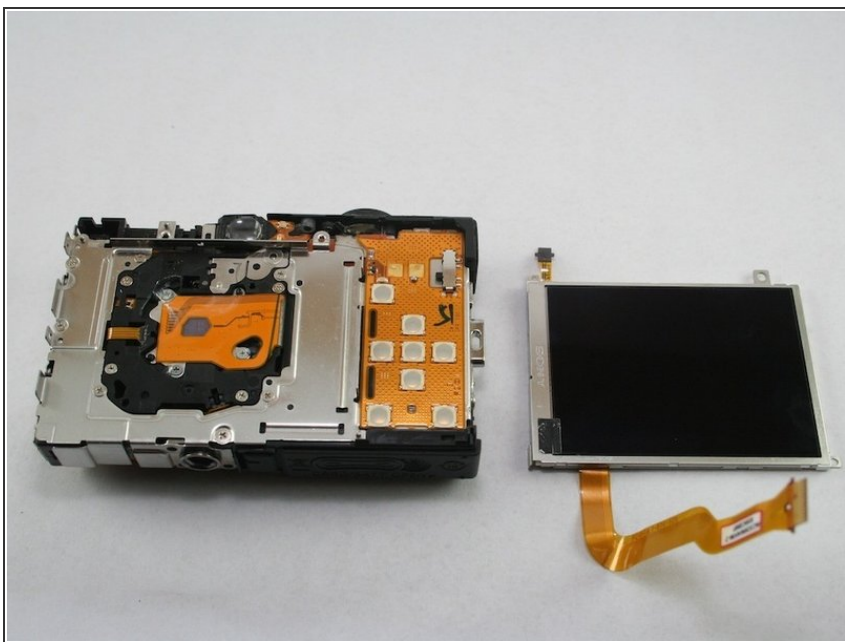
- Use tweezers to remove the connector ribbon from the top-left corner above the LCD screen.
- ⚠ Be gentle. This ribbon should stay attached to the screen.

Step 9



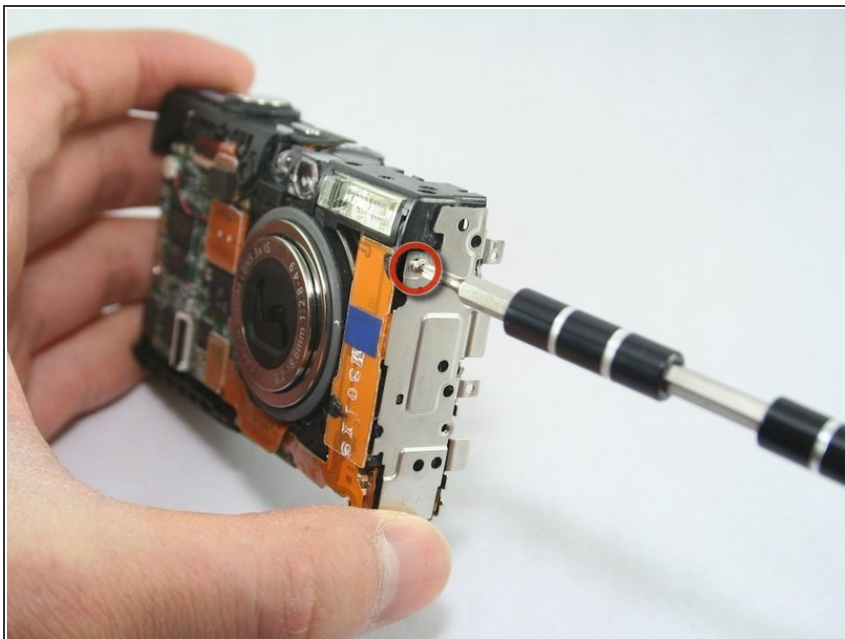
- Use a spudger to lift the connector lock (black flap) at the end of the larger LCD connector ribbon on the front side of the camera.
- Use the tweezers to lift this ribbon.
- Use the tweezers to gently peel this ribbon from the one underneath it.

Step 10



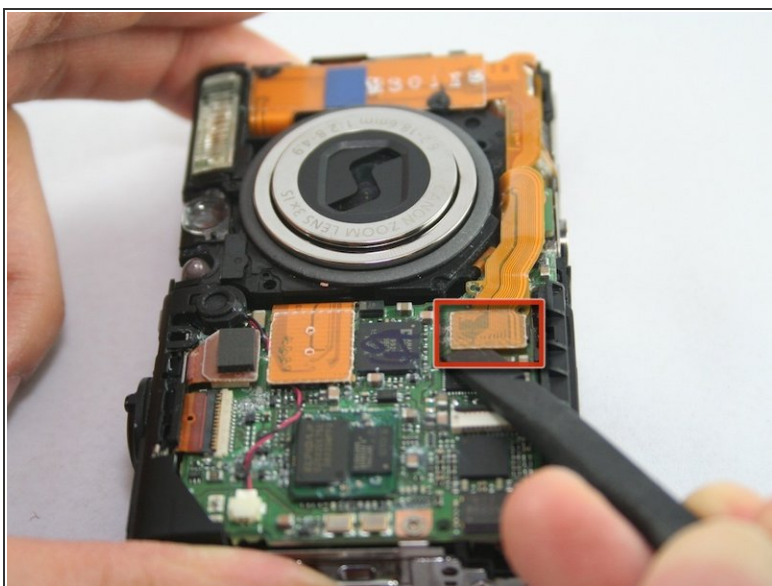
- The LCD screen should now be removed.

Step 11 — Flash Assembly



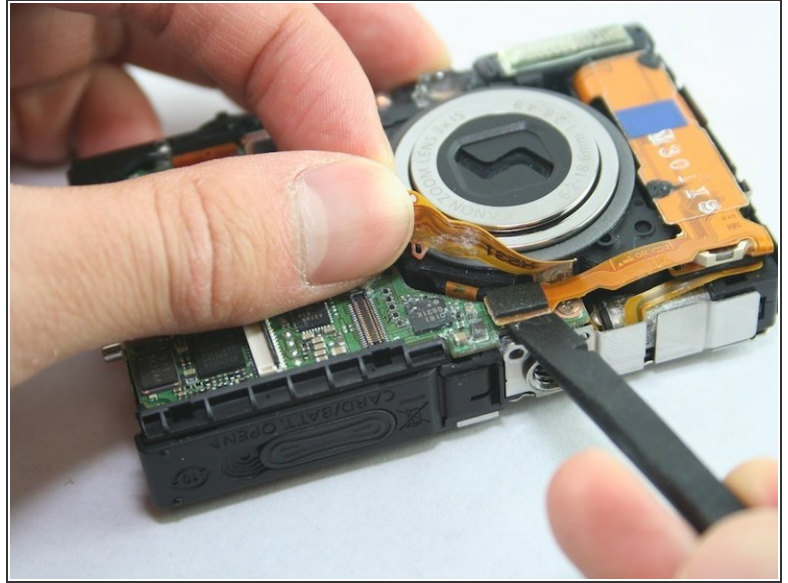
- Remove the screw located on the side of the camera (0.072 in).

Step 12



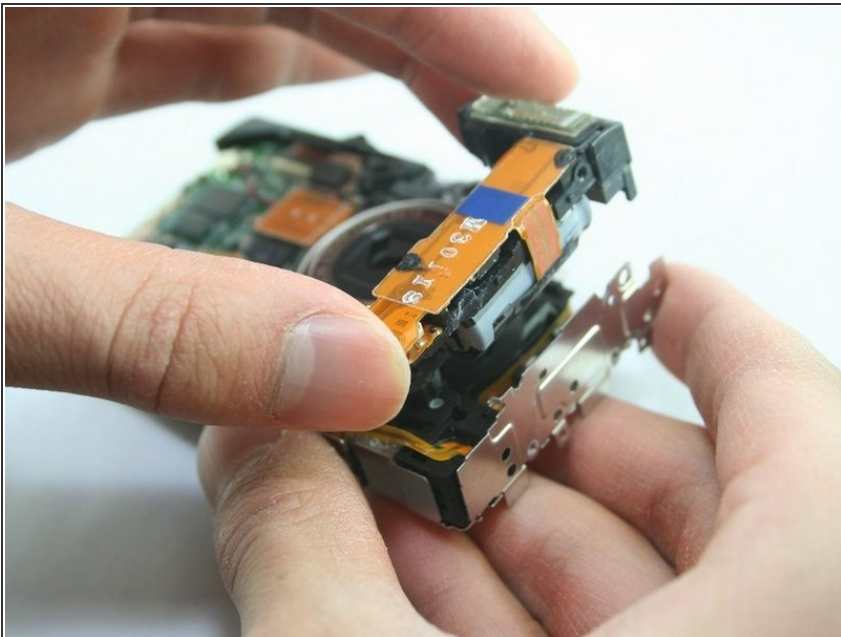
- Use the spudger to remove the lens ribbon from the circuit board.
- Use the spudger to lift the ribbon.
- ⓘ This ribbon is connected to the lens, but the flash assembly ribbon is underneath it.

Step 13



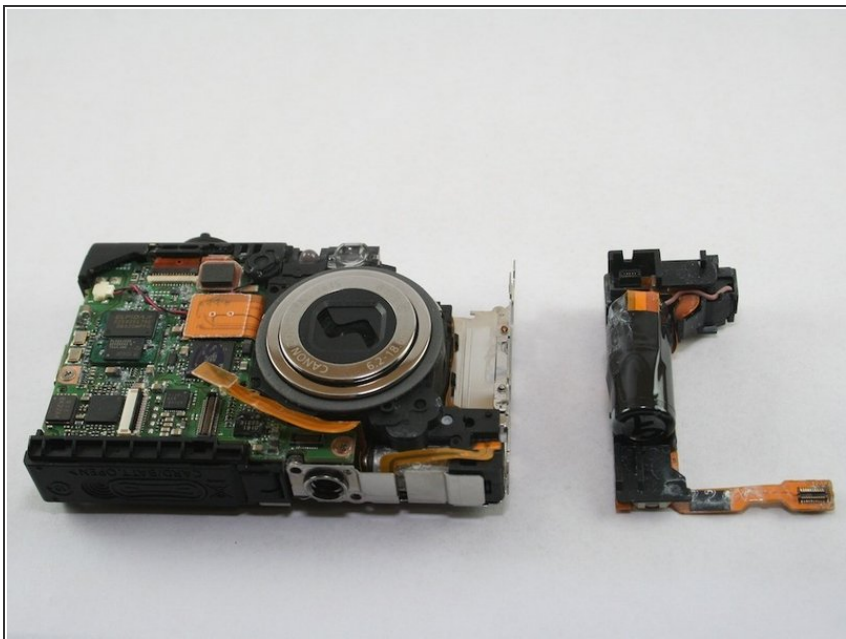
- Disconnect the flash assembly ribbon.
- ⓘ The flash assembly ribbon is located underneath the lens assembly ribbon.

Step 14



- Remove the flash assembly, which includes the capacitor. If it resists, note the small hook on the right side near the bottom.
- ⚠ Be careful when taking out the capacitor. It could shock you.

Step 15



- The capacitor should now be removed.

To reassemble your device, follow these instructions in reverse order.