



Fujitsu LifeBook N3510 Display Replacement

Effectively replace the display on your Fujitsu LifeBook N3510 by following this guide.

Written By: Neil Daniels



INTRODUCTION

Following these steps, you can effectively replace your display.



TOOLS:

- [Phillips #1 Screwdriver](#) (1)
 - [Spudger](#) (1)
 - [Magnetic Project Mat](#) (1)
-

Step 1 — Battery



- Locate the two clips on the bottom of the computer that support the battery.

Step 2



- Using your fingers, push the clips inward and then upward.
- Lift the battery out of the computer.

Step 3 — Hinge Cover



- Use a spudger to lift the back of the hinge cover on the left and right sides of the computer.

Step 4



- Lay the computer flat on a stable surface with the monitor pointing away from you.

Step 5



- Use a spudger to partially lift the hinge cover.

Step 6



⚠ The hinge cover has a ribbon cable that is attached to the motherboard. To prevent damage, lift the hinge cover slowly.

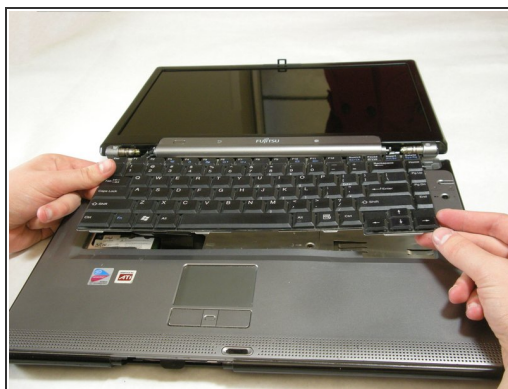
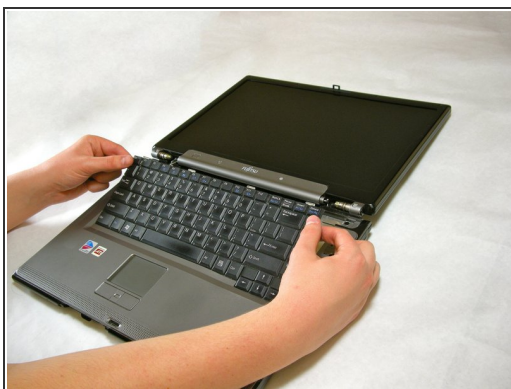
- Lift the hinge cover enough to expose the ribbon cable.


Step 7



- Disconnect the ribbon cable from the motherboard and remove the hinge cover from the computer.

Step 8 — Keyboard



 The keyboard has a ribbon cable that is attached to the motherboard. To prevent damage, lift keyboard slowly.

- Lift the keyboard enough to expose the ribbon cable.

Step 9



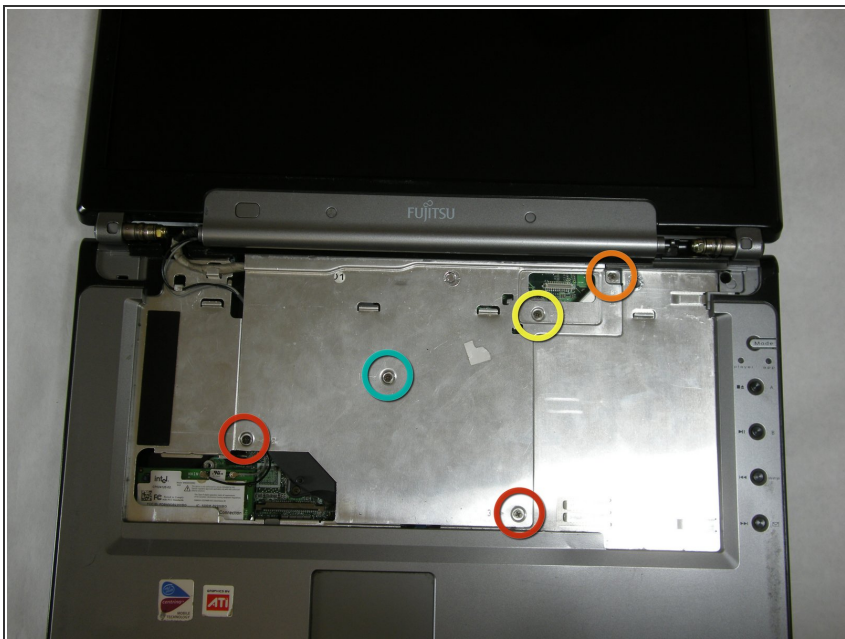
- Use a spudger to release the ribbon cable from the motherboard.

Step 10



- After the ribbon has been detached, carefully remove the keyboard.

Step 11 — Metal Motherboard Cover



- Remove the following screws, all labeled "3."
 - Two 8.63mm screws.
 - One 7.65mm screw.
 - One 5.74mm screw.
- Remove the following screw, labeled "15."
 - One 17.81mm screw.

Step 12



- Lift the cover with fingers and remove.

Step 13 — Display



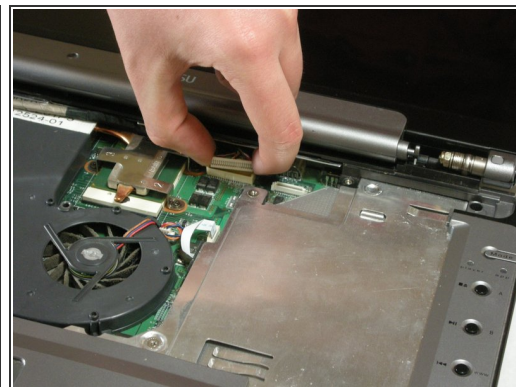
- Remove labeled screws.

Step 14



- Remove the screws from the bottom of the hinge as shown in the image.

Step 15



- Use a spudger to detach and remove cables from the motherboard.

Step 16



- Unplug highlighted cables from the wireless module.

Step 17



- Hold down the body of the computer by placing your hands in the pictured positions. Then, lift the display from the body.

To reassemble your device, follow these instructions in reverse order.