



Canon PowerShot A610 Broken Control Buttons Repair

This guide demonstrates how to take off the...

Written By: Matthew Ramirez



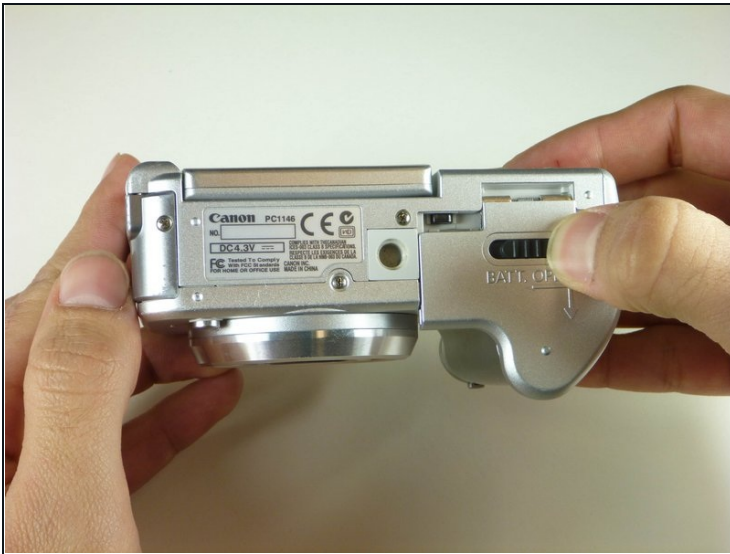
INTRODUCTION

This guide demonstrates how to take off the camera casing and easily pop the broken button back into place.

TOOLS:

Phillips #00 Screwdriver (1)

Step 1 — Batteries



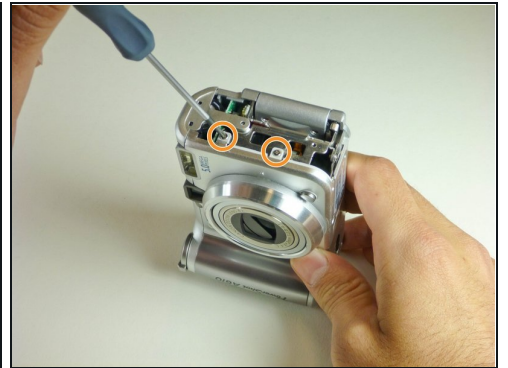
- Unlock the battery cover, while swinging the cover outward to open it.

Step 2



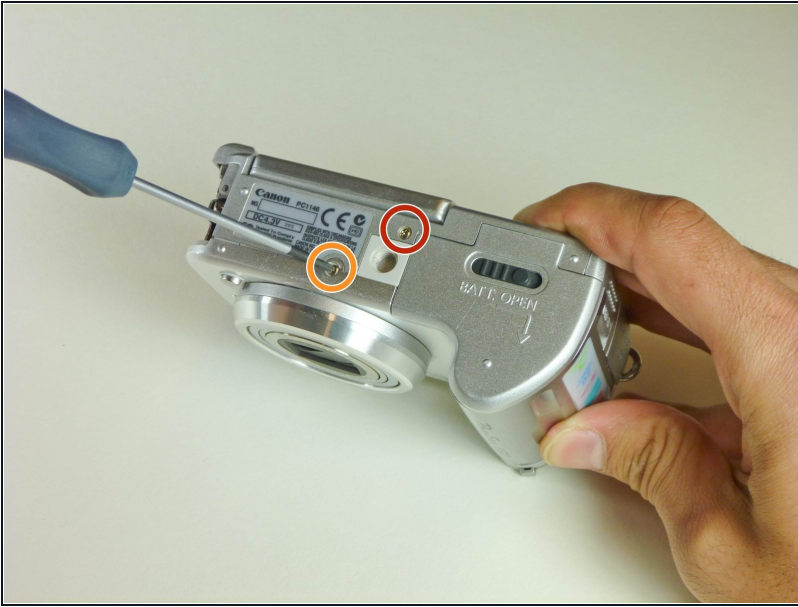
- Turn the camera over and allow the batteries to fall out.
- Close the battery cover.

Step 3 — Camera Housing



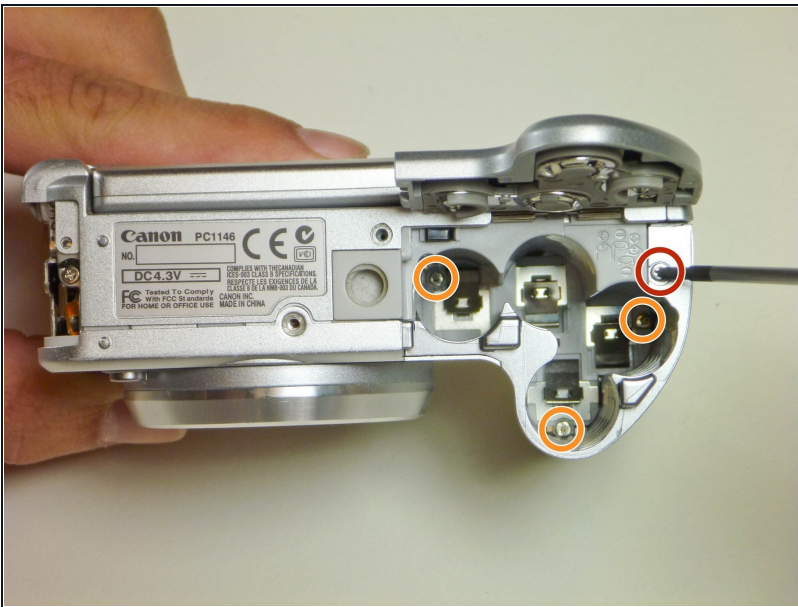
- Remove the three 3 mm screws that attach the side panel to the body of the camera.
- Using your fingernails, pull the side panel outward to remove it.
- Remove the two remaining 2 mm screws that attach to the frame of the camera.

Step 4



- Remove the 3 mm screw that sits at the bottom of the camera, near the front side.
- Remove the 4 mm screw that sits at the bottom of the camera, near the back side.

Step 5



- Open the battery cover.
- Remove the 5 mm screw that sits on the top of the battery slot.
- Remove the three 6 mm screws that sit at the bottom of the battery slot.
- Close the battery cover.

Step 6



- Open the digital A/V DC terminal cover.
 - Remove the three 4 mm screws.
 - Detach the digital A/V DC terminal.
- ☒ When you reassemble the camera, leave the topmost screw out until after you put the top casing back.

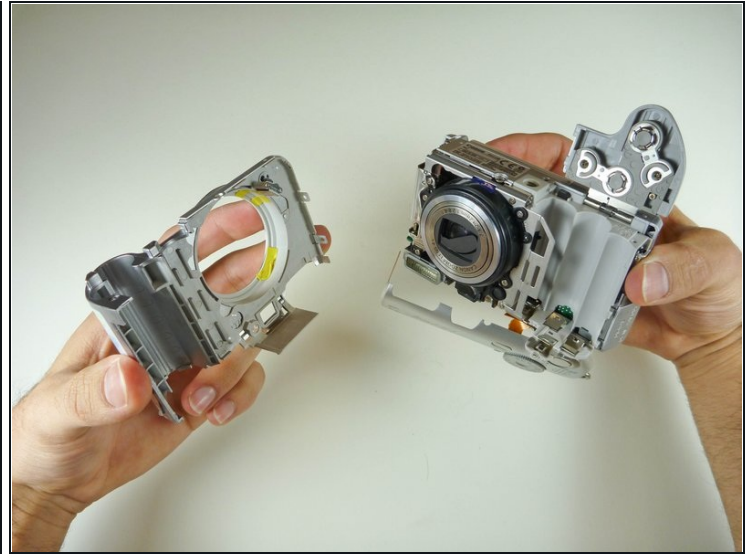
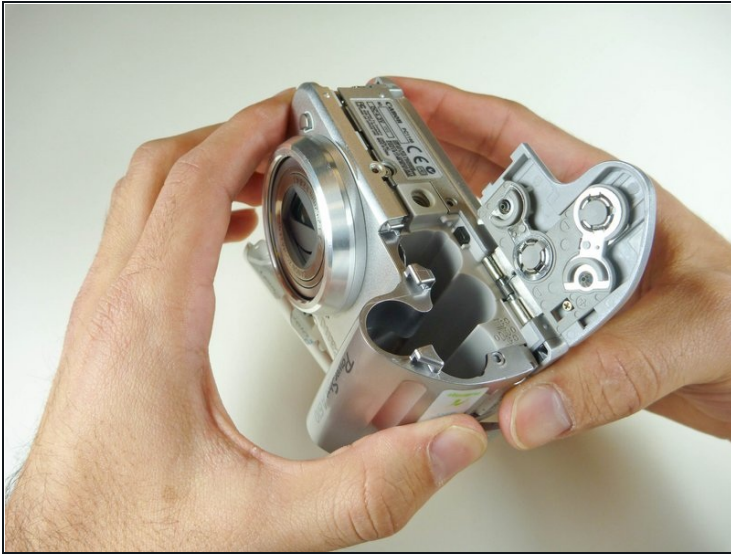
Step 7



- Grip the sides of the top cover and gently lift it until it detaches from the camera.

⚠ Do not completely remove the top cover; an orange ribbon cable still connects it to the camera.

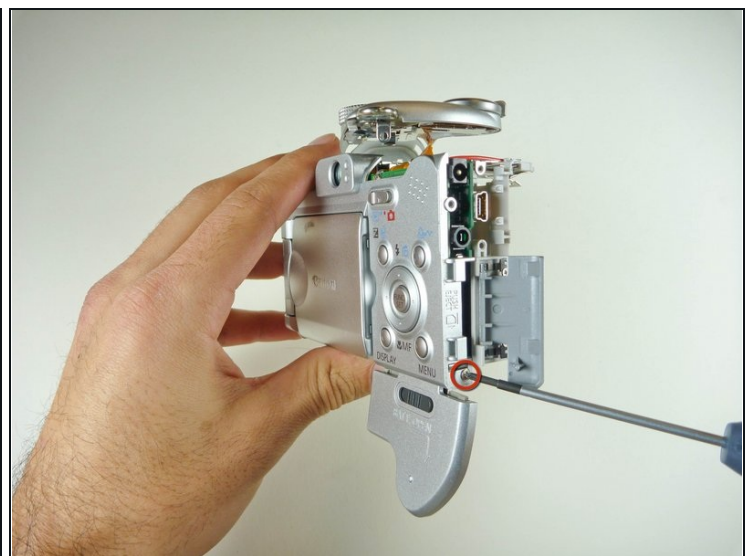
Step 8



- Open the battery cover.
- With the camera upside down, pull the side of the front case that is closest to you, in an outward movement.

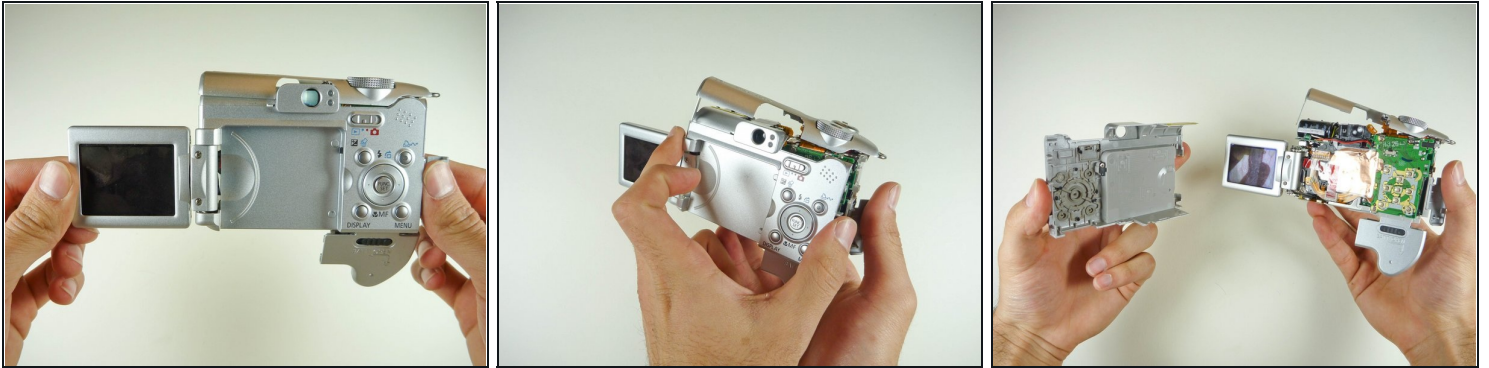
⚠ Apply some force, but pull the front case gently to prevent damage.

Step 9



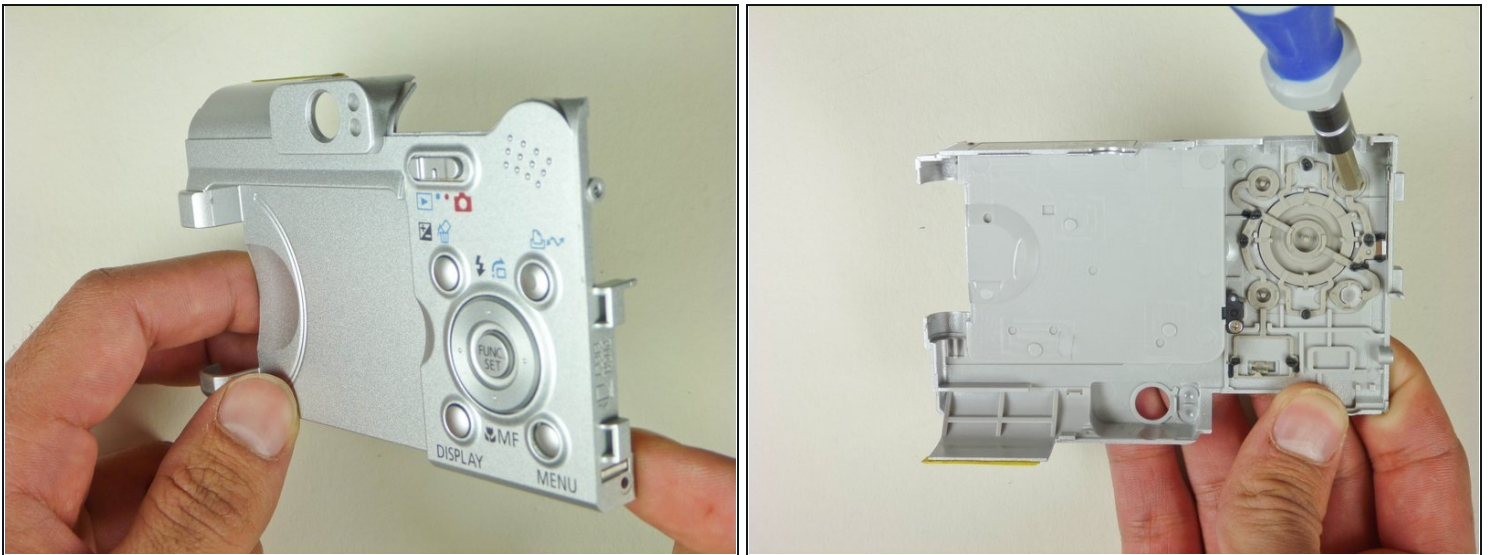
- Open the memory card slot cover.
- Remove the 3 mm screw that sits near the bottom of the case.

Step 10



- Flip the LCD screen all the way open.
- Grip both sides of top of the back case and gently pull it, in an outward movement, until the case detaches.

Step 11 — Canon PowerShot A610 Broken Control Buttons Repair



- Remove the back casing.
- Flip the casing over and push on the back of the broken button with either your finger or a blunt object until it realigns into its slot.

To reassemble your device, follow these instructions in reverse order.