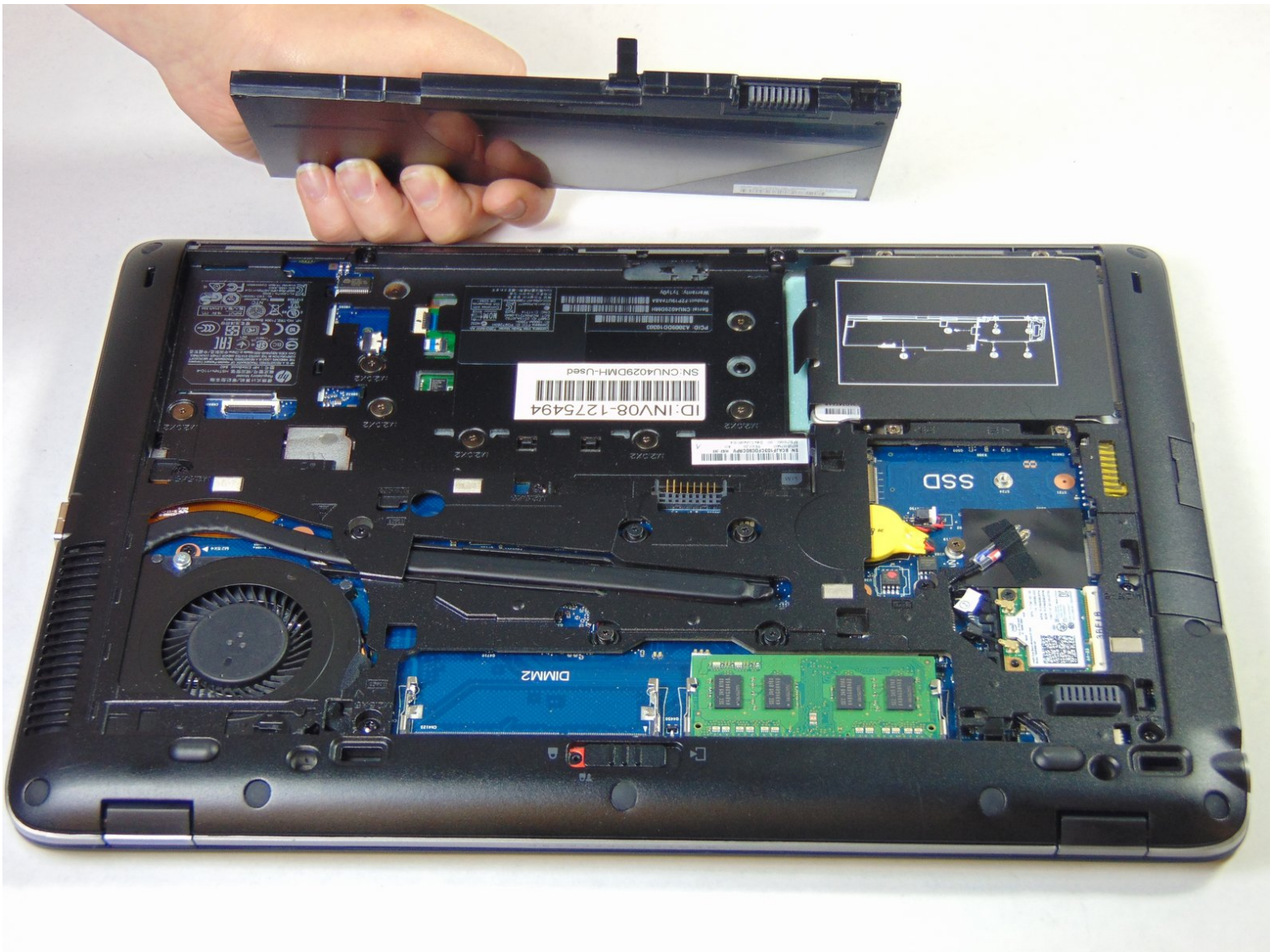




HP Elitebook 840 G1 Battery Replacement

Replacing the battery on your HP Elitebook 840 G1

Written By: Ashley Williams



INTRODUCTION

Replace dead or dying battery to solve for laptop powering off right away or quickly when unplugged



TOOLS:

- [Fingers](#) (1)




PARTS:

- [HP CM03 Replacement Laptop Battery](#) (1)

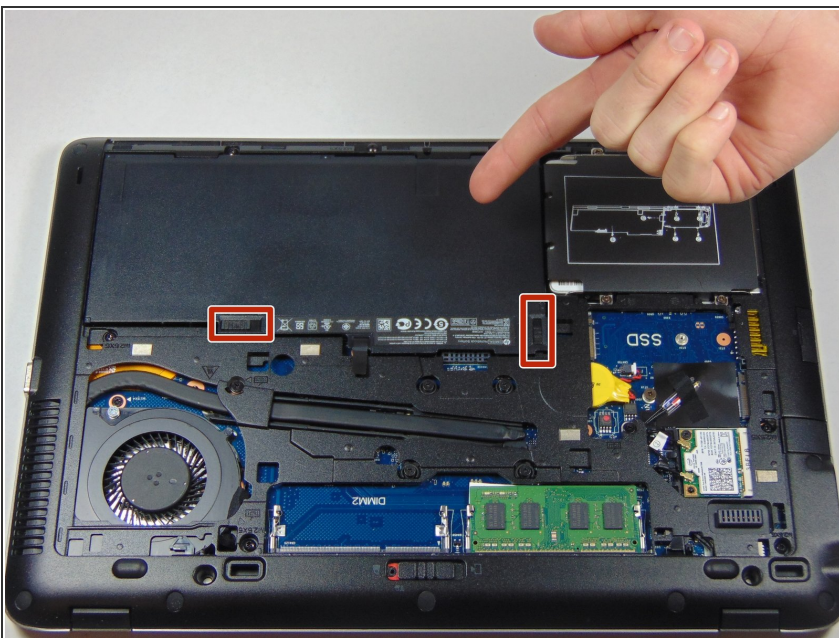
Step 1 — Battery



 Working on your device while it is turned on may result in electric shock. Make sure to shut down and unplug your device before you begin.

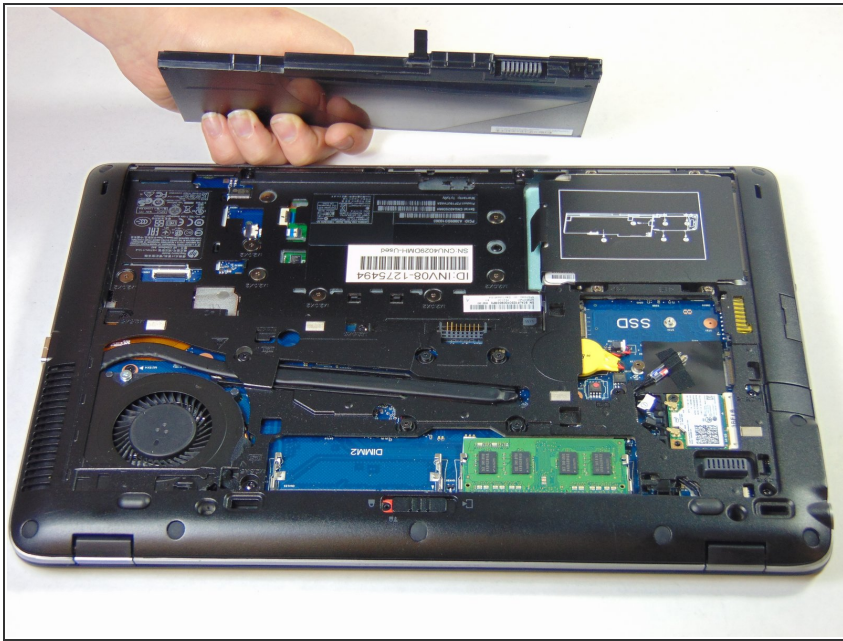
- Slide the latch, to the right, away from the lock symbol.
- Slide the cover away from the latch to remove it.

Step 2



- Once the cover is removed you will be able to see the battery and the two latches that hold it in place.
- The two latches should be pulled back, one of which is spring loaded and must be held in place in order to remove the battery.

Step 3



- Battery should easily be lifted up and out.

To reassemble your device, follow these instructions in reverse order.