



Brother MFC-7820N Disassembly

I am going to show how change the Auto Document Feeder and where the cabel are located.

Written By: Valentin



INTRODUCTION

Please remove the power and the USB cable before you start to repair your brother mfc. You need some screwdriver and the parts you want to change. Perhaps you buy a used one, where you can take the parts. When you have two brother printers, please start with the damaged one. So you learn how to remove the parts and can make it better with the other one :-).



TOOLS:

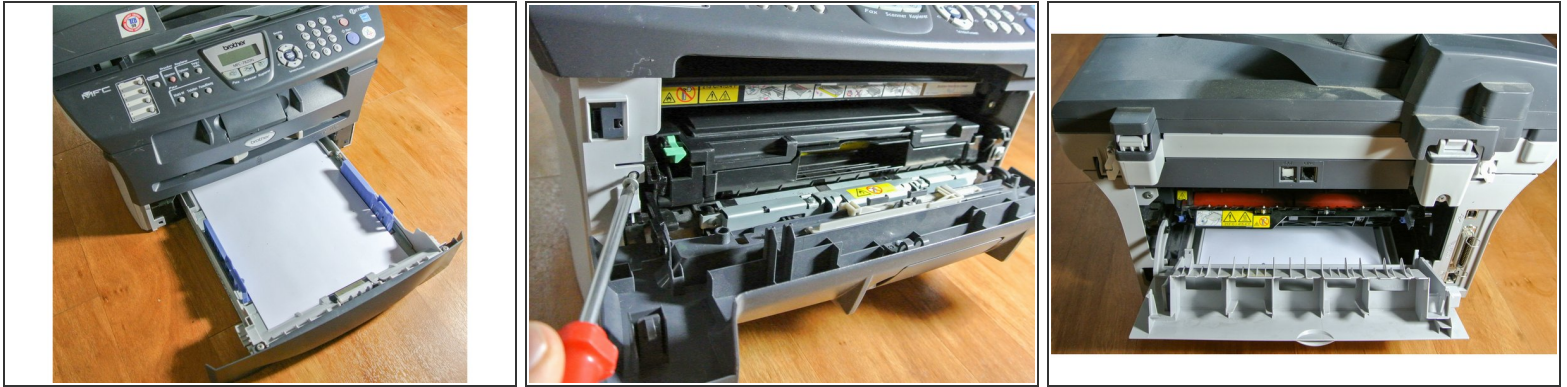
- [Screwdriver](#) (1)



PARTS:

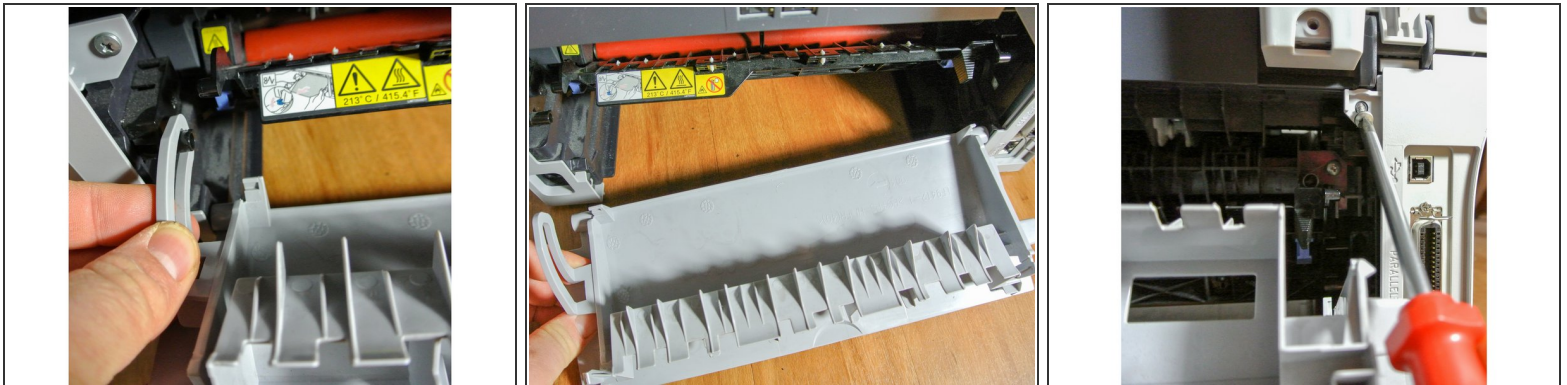
- [The parts you want to change](#) (1)

Step 1 — Remove Paper feed, screw, front and back cover



- Remove the Power- and USB-Cable!
- Remove the paper tray that contains the paper completely.
- Open the front cover and remove the screw on the left side.
- Turn around the printer and open the back cover.

Step 2 — Hang out the back cover and remove screw




- Hang out the back cover: After opening it, you can start to hang it out. Press from the left parts to the right and move it towards yourself.
- Please remove the Screw on the right side, as shown in the image. If you want to remove the Automated Document Feed (ADF) you might now remove this screw as well.

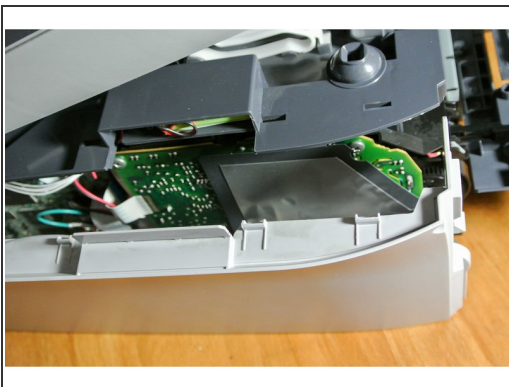
Step 3 — Open the side cover I



- To remove the cover from the side where the internal cables are plugged in and the motherboard is located, follow these steps:
- Raise the upper cover (not the automated document feed). I mean the cover beneath the scanner glass.
- Now turn the side to you, where you've already removed the screws from.

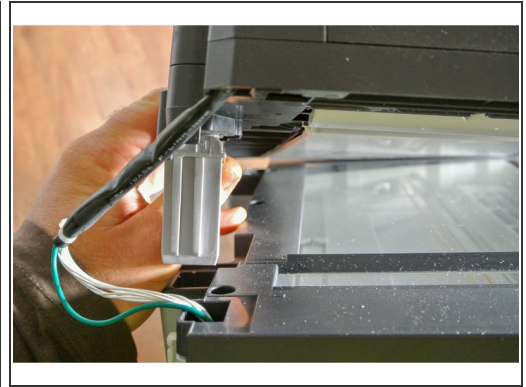
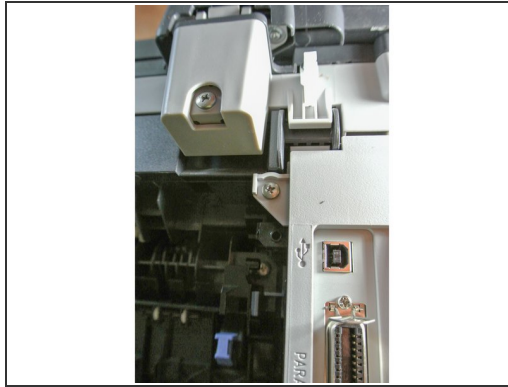
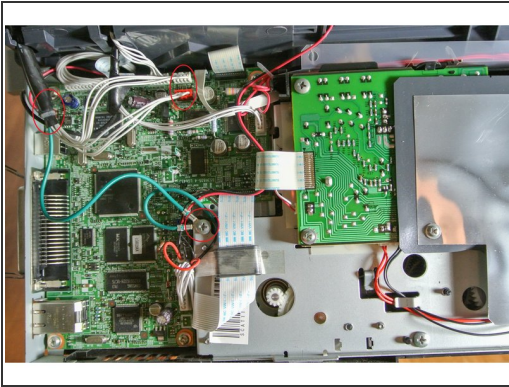
 The side cover is held by some Hooks, so it can be a bit tricky. Start from the right to remove the cover. Lift up the darker grey plastic parts slightly.

Step 4 — Open the side cover II



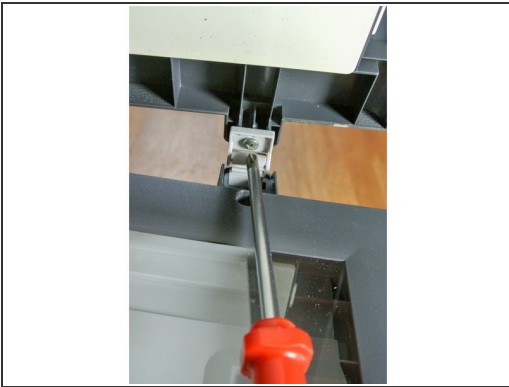
- After you fully removed the cover, you'll have a view on the motherboard, the cable and the plugs.

Step 5 — Remove Automated Document Feed I



- To change or remove the ADF-Scanner-Unit, you'll have to remove the cables I've marked in the first picture.
- On the back side remove the screw at the right ADF-hinge.
- Pull out the cable carefully.

Step 6 — Remove Automated Document Feed II



- Open the scanner glass area and be careful that the ADF falls not down on the left side. It could break the hinge on the other side.
- Now remove the screw on the inner side of the right hinge. Please take care to use a screwdriver with the correct screw size. Here it could be tricky otherwise.
- Now you can remove or change the ADF.

To reassemble your device, follow these instructions in reverse order.