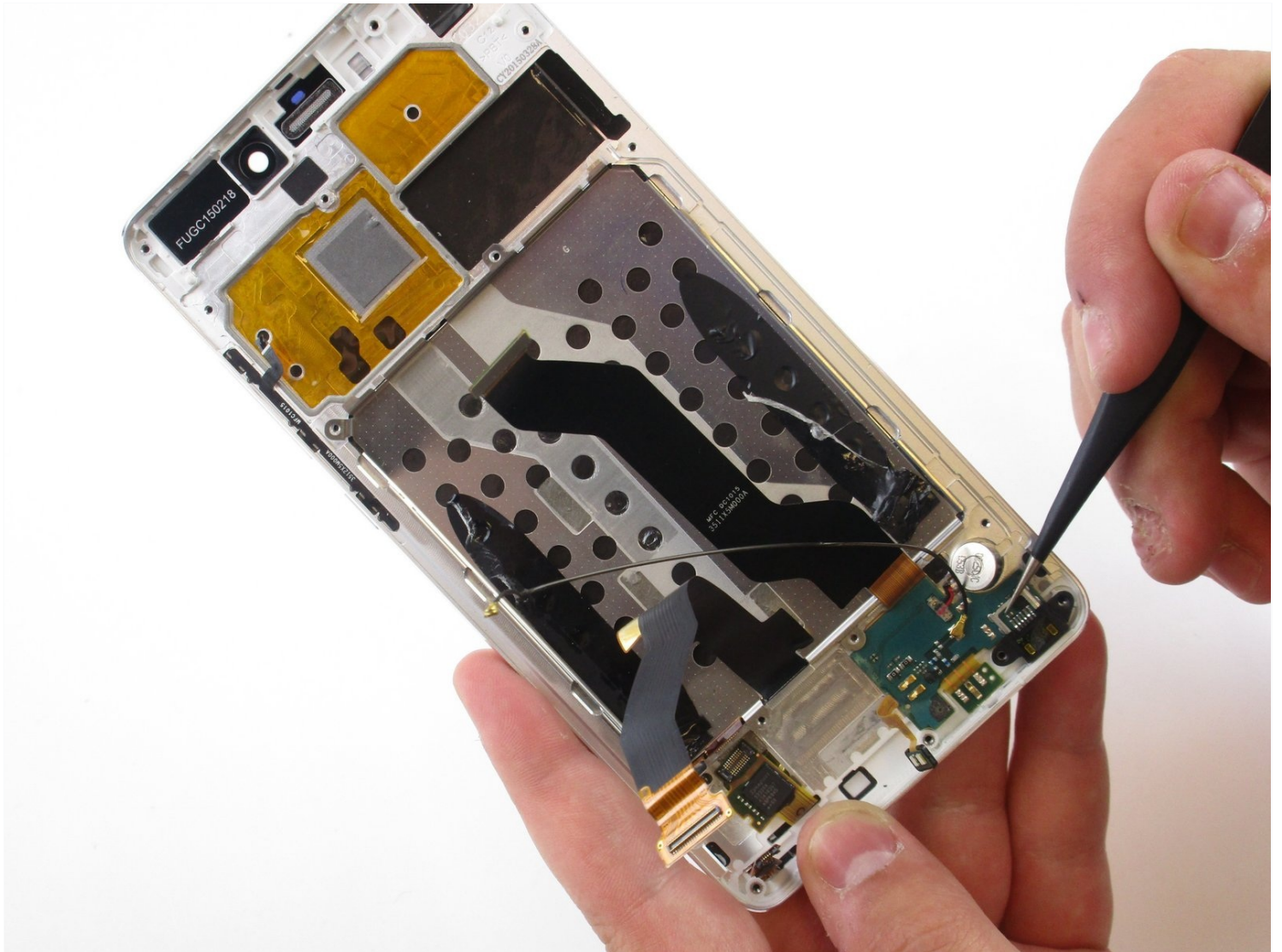




# Xiaomi Mi Note Micro USB/Microphone/Virtual Keys light/Vibrator Replacement

If the USB slot, Microphone, Virtual Keys...

Written By: Mark Sears



# INTRODUCTION

If the USB slot, Microphone, Virtual Keys lights or the phones vibrator doesn't seem to be working replace it with this guide.

---

## TOOLS:

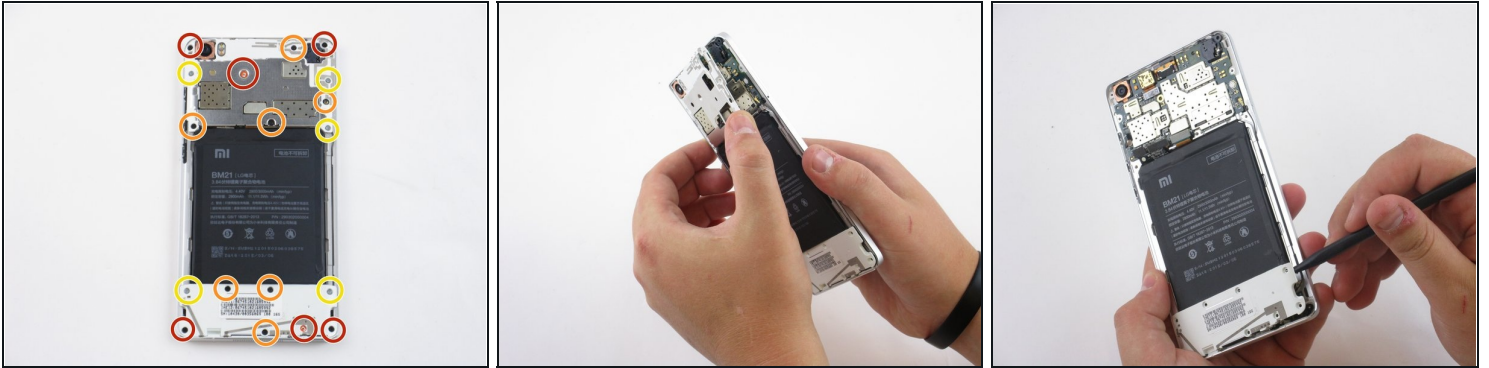
- [Tweezers](#) (1)
  - [Metal Spudger](#) (1)
  - [Phillips #000 Screwdriver](#) (1)
  - [Suction Handle](#) (1)
  - [Spudger](#) (1)
- 

## Step 1 — Battery



- Use your suction cup to grip the back of the phone. Once the suction cup is secure, pull back with moderate force and the back plate should snap free.

## Step 2



- Once the back plate is off you will need to detach the frames that hold in the battery. Locate and remove the screws (Screws are marked in the image). You can then pull the frame off with ease once the screws have been removed.
- Remove the six 3.5mm Phillips #000 black screws using a securing part of the back panels.
- Remove the seven 2.5mm Phillips #000 black screws securing part of the back panels.
- Remove the five 2mm Phillips #000 silver screws securing the remaining back panels.

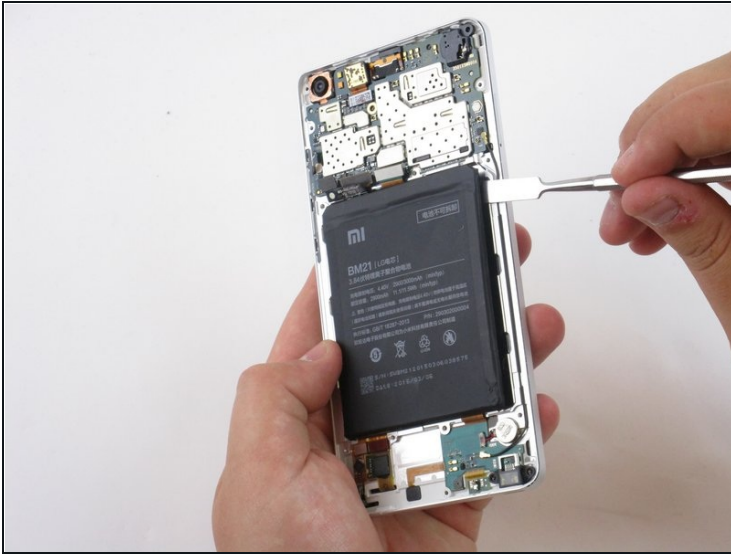
## Step 3



- Use a nylon spudger to pry upwards to detach the ribbon that's connecting the battery to the motherboard.



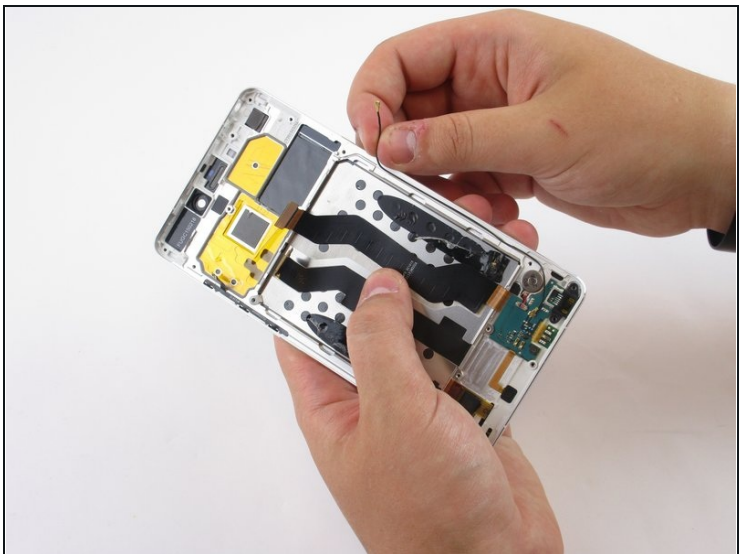
## Step 4



- Insert a nylon or metal spudger underneath the battery at any point. Then slide the spudger around all the edges to loosen it. The battery can now be easily lifted out of the frame.

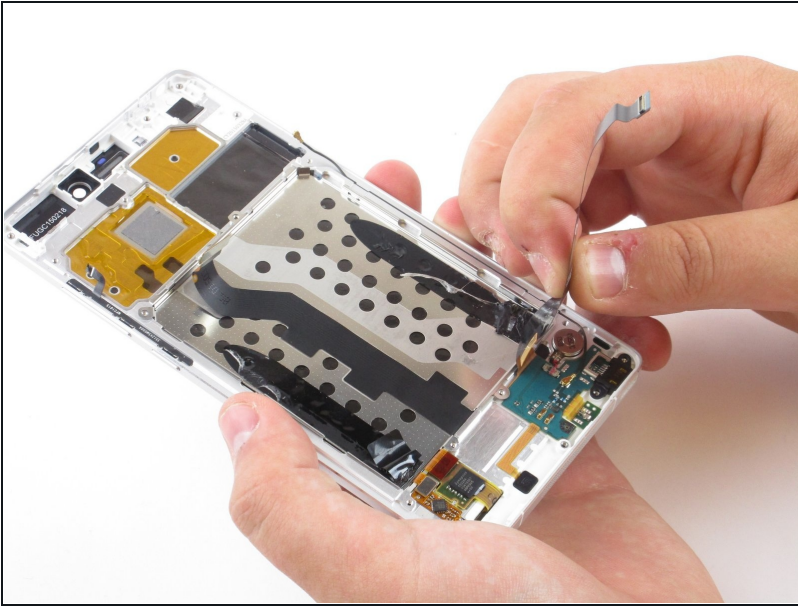
ⓘ Glue will be holding down the backside of the battery.

## Step 5 — Micro USB/Microphone/Virtual Keys light/Vibrator



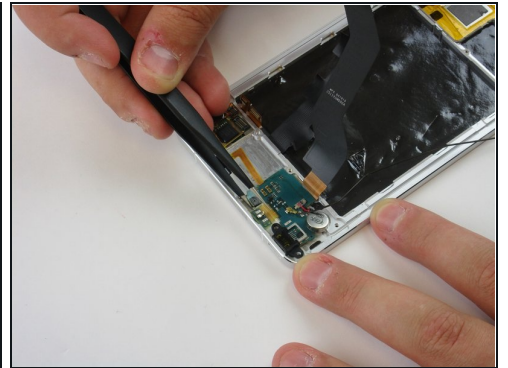
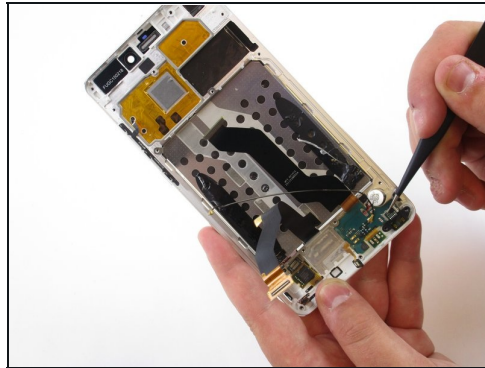
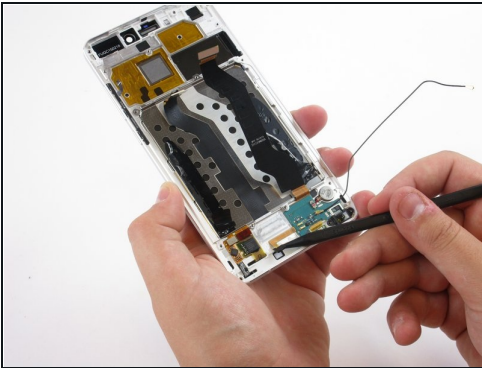
- Use [tweezers](#) to pull upwards and detach the microphone wire that connects the motherboard to the dock connector.

## Step 6



- Peel back the ribbon that is adhered to the metal surface as shown.

## Step 7



**⚠ The dock connector is firmly adhered to the frame below it. To prevent damage to the phone use minimal force when removing.**

- Using tweezers slowly start prying upwards at the locations shown in the images. After carefully prying around the edges of the dock connector, it can now be lifted upwards out of the frame.

---

To reassemble your device, follow these instructions in reverse order.