

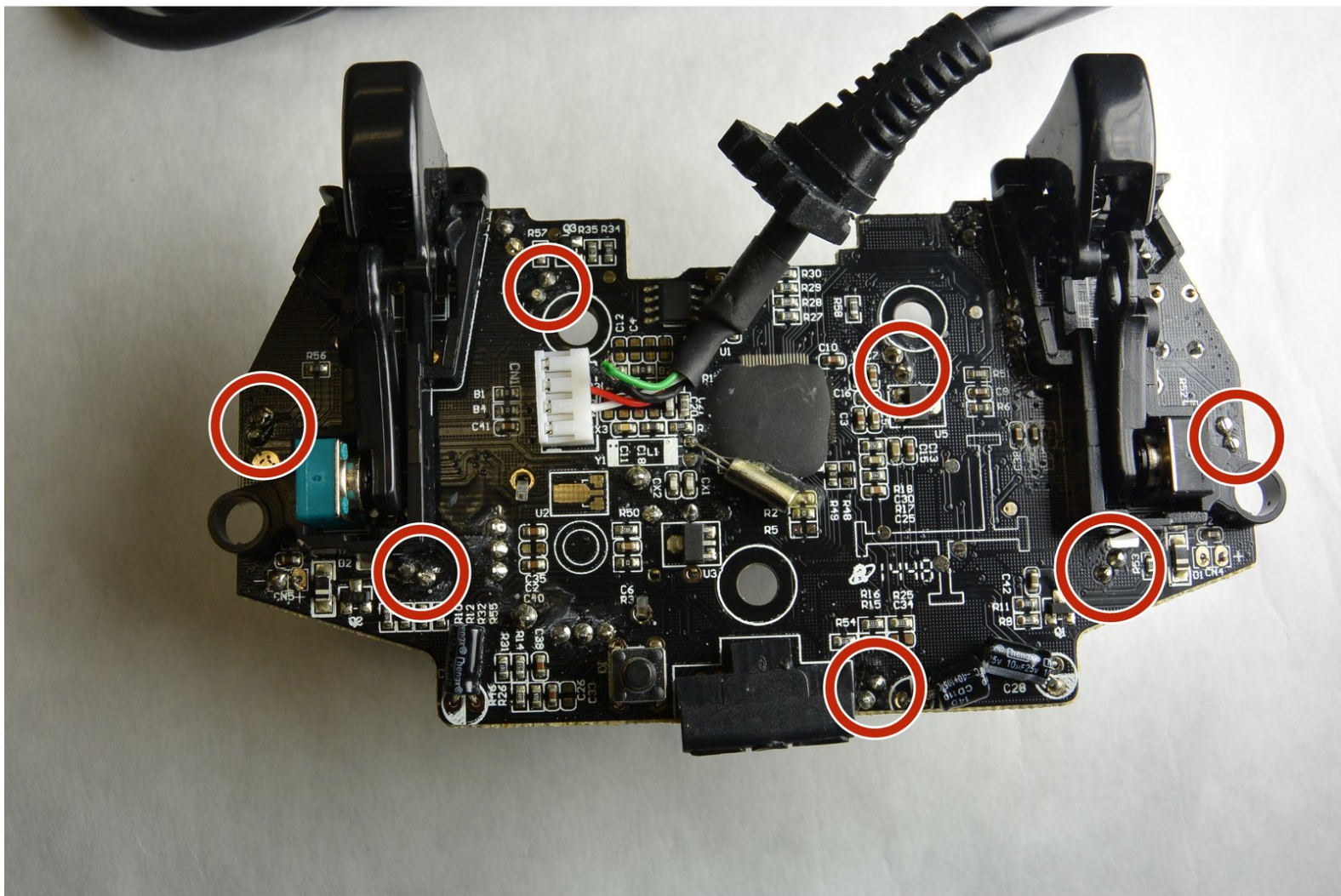


PDP Afterglow Wired Xbox 360 Controller

LEDs Replacement

This guide will provide step-by-step instructions on how to replace one or more of the LEDS located on the controller logic board.

Written By: Joi Officer



INTRODUCTION

This guide will teach you how to use the soldering technique to remove the desired LED from the logic board and replace it with a new LED. Be careful when soldering because there is chance of damaging the controller.



TOOLS:

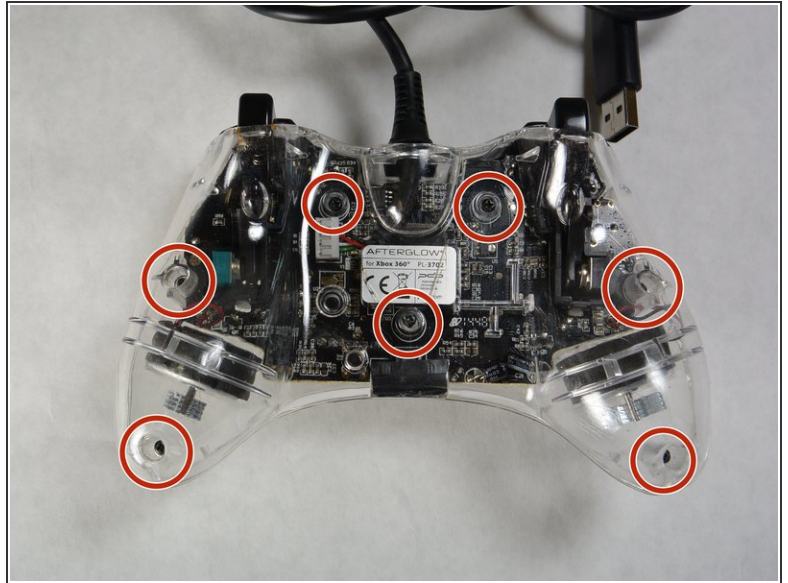
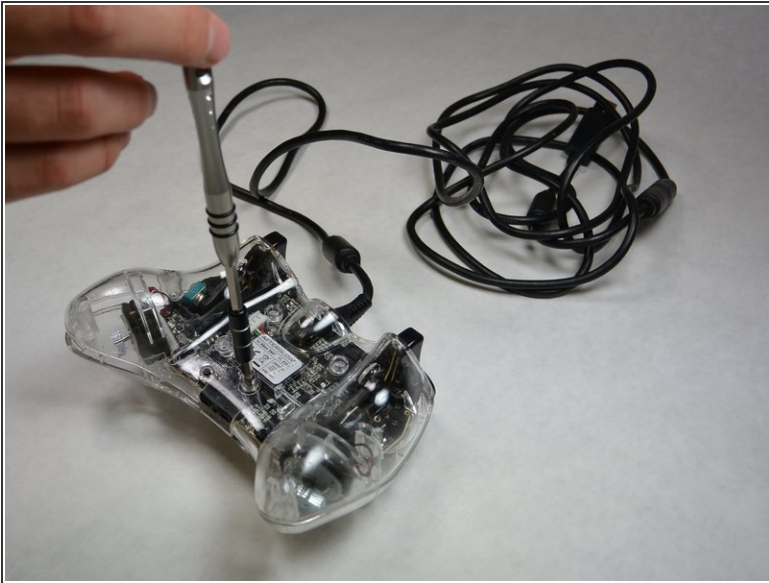
- [iFixit Opening Tools](#) (1)
- [Screwdriver](#) (1)
- [Solder](#) (1)
- [Soldering Iron](#) (1)
- [Solder Vacuum](#) (1)



PARTS:

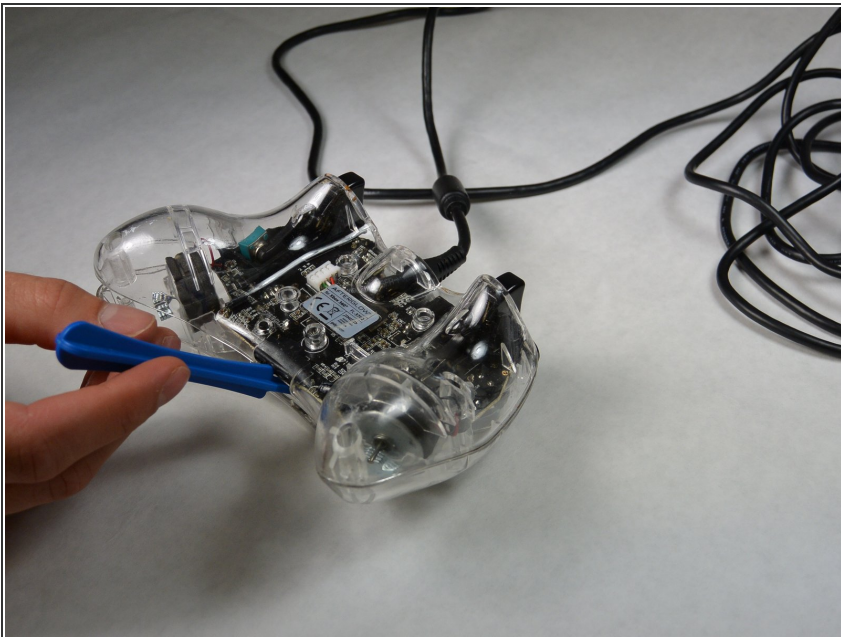
- [LEDs](#) (1)

Step 1 — Case



- Loosen the seven 11 mm Phillips #0 screws located on the back of the controller.

Step 2



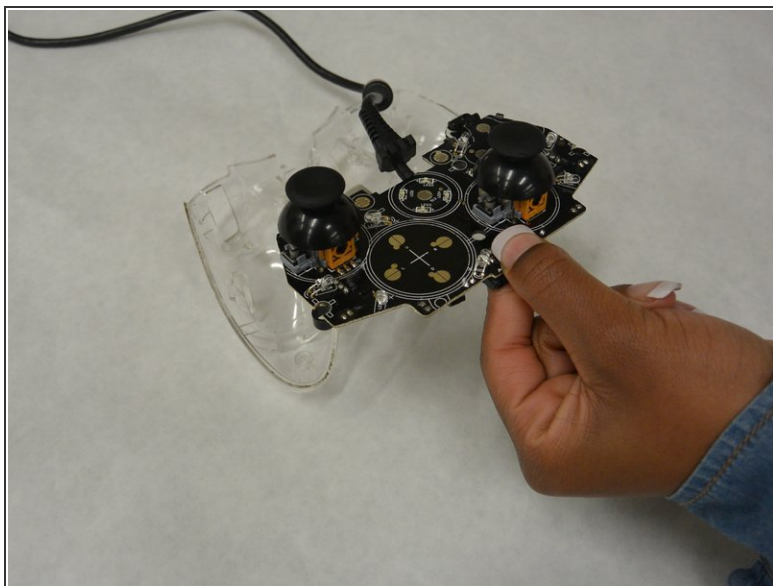
- Using a plastic opening tool, pry the back cover from the front.
- ⓘ The covers should separate without needing a plastic opening tool, but in some cases you may need to use it.

Step 3



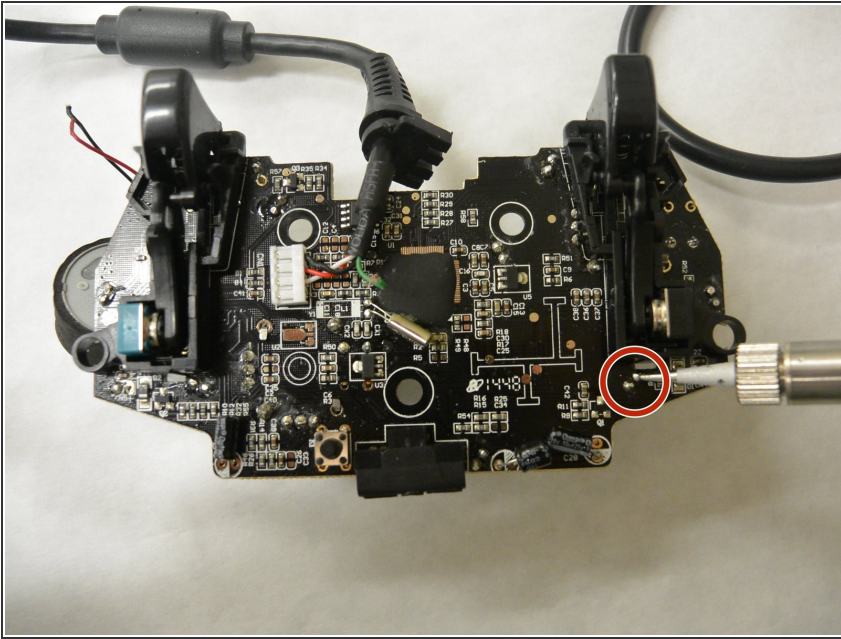
- Remove the top cover from the bottom and place next to each other.

Step 4 — LEDs



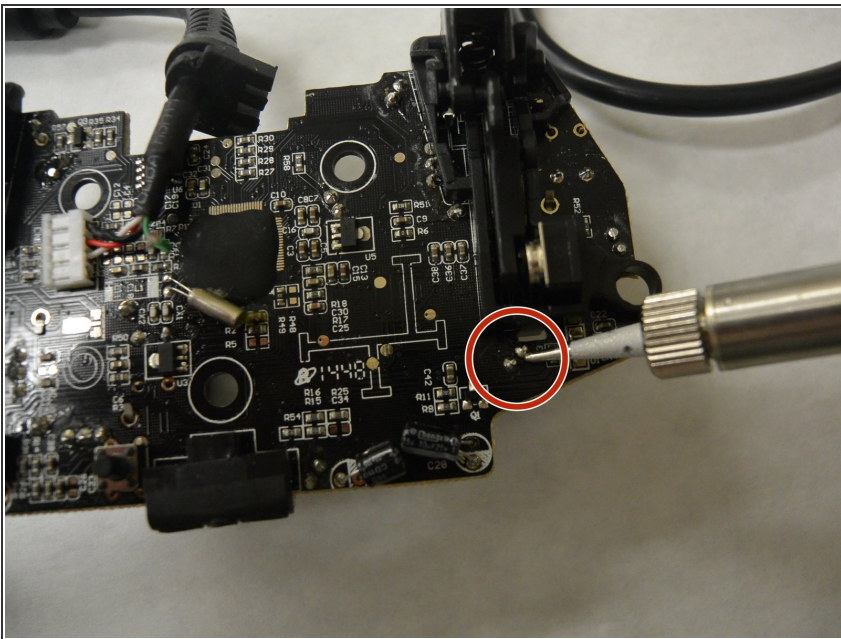
- Remove the logic board from the controller casing by lifting up and pulling out.

Step 5



- Locate the LED (s) that needs to be replaced.
- Once the LED has been located, flip the logic board to the other side and locate the pins associated with the LED that needs to be replaced.

Step 6



- Desolder the LED from the logic board.
- ⚠ The soldering iron is very hot and can harm you or the device if used improperly.

To reassemble your device, follow these instructions in reverse order.