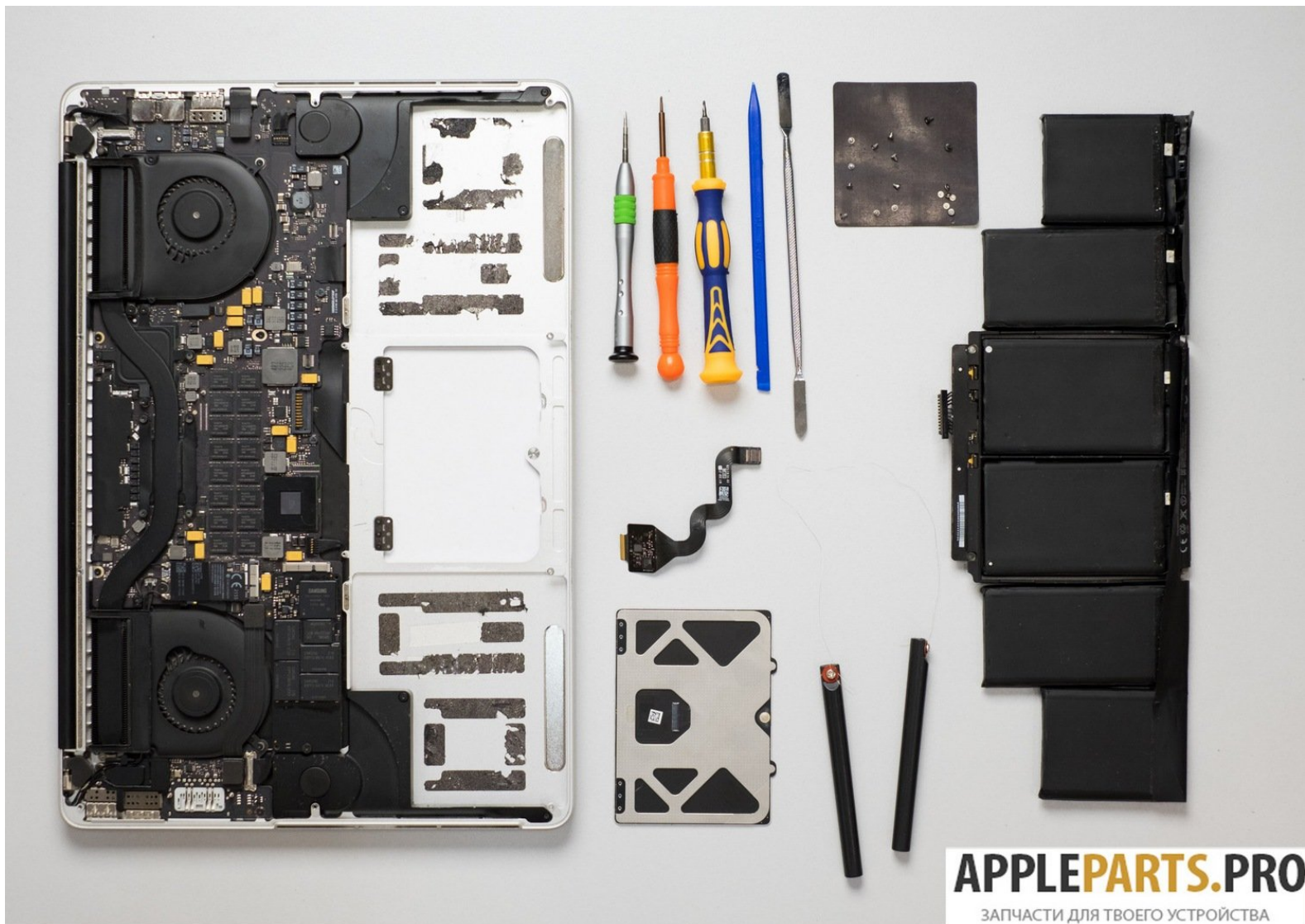




Battery and Trackpad. Disassembling MacBook Pro 15" Retina 2012-2015

Removing the Battery and Trackpad

Written By: Aleksandr ApplePartsPRO



INTRODUCTION

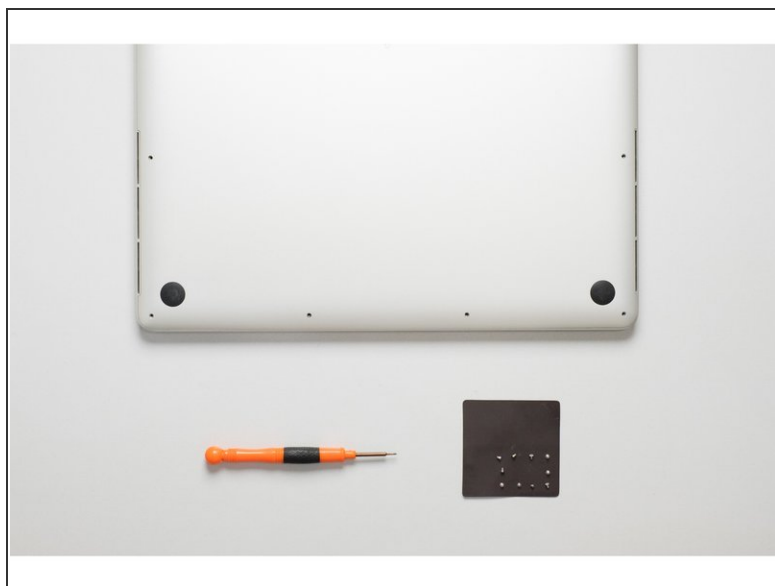
Опишите в общих чертах чему вы собираетесь научить.



TOOLS:

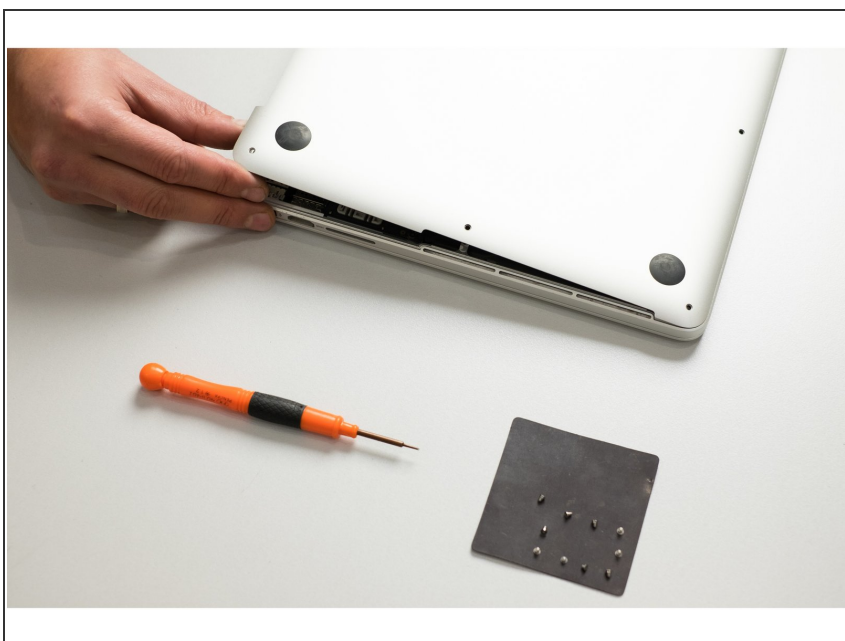
- [Metal Spudger](#) (1)
 - [Spudger](#) (1)
 - [T5 Torx Screwdriver](#) (1)
 - [P5 Pentalobe Screwdriver Retina MacBook Pro and Air](#) (1)
-

Step 1 — Battery and Trackpad. Disassembling MacBook Pro 15" Retina 2012-2015



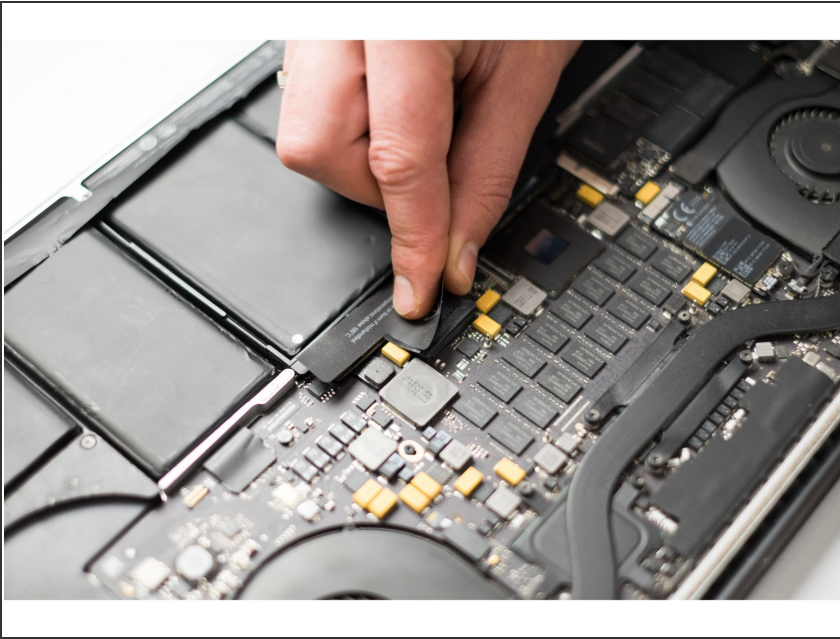
- Remove the following pentalobe screws securing the lower case to the MacBook Pro:
 - Eight 3.0 mm
 - Two 2.3 mm

Step 2



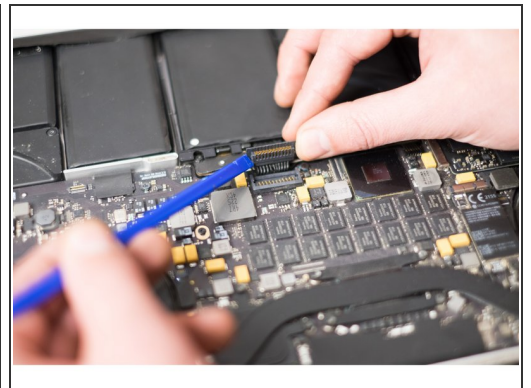
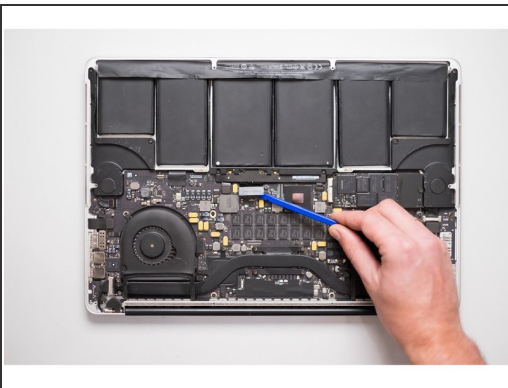
- Lifting from the edge nearest the clutch cover, lift the lower case off the MacBook Pro.
- Set the lower case aside.

Step 3



- Peel back the warning label covering the battery connector.

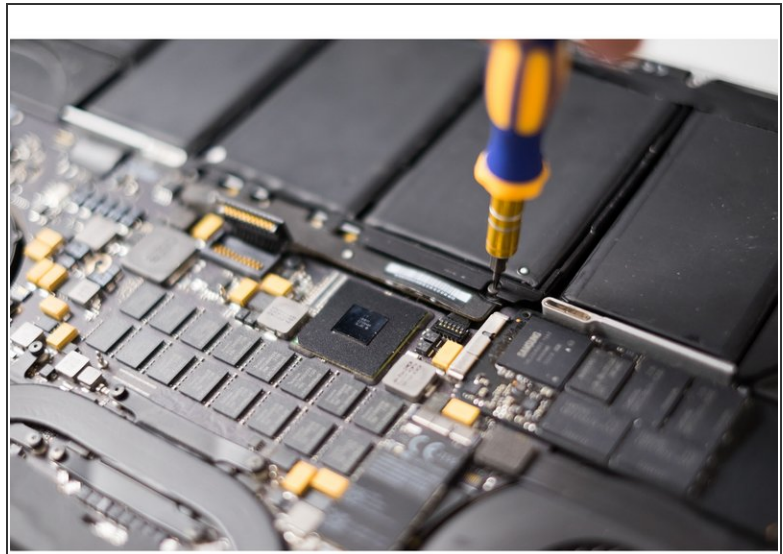
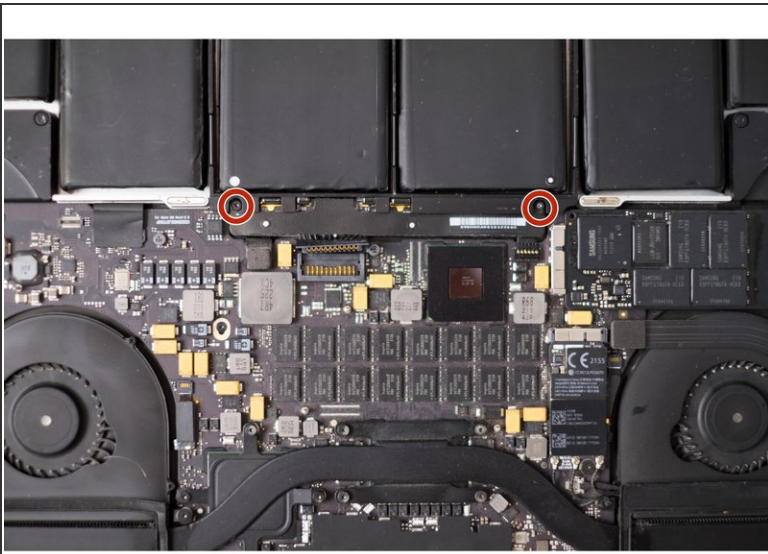
Step 4



 No metal tools!

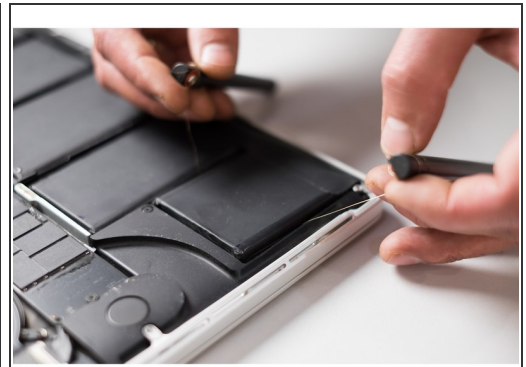
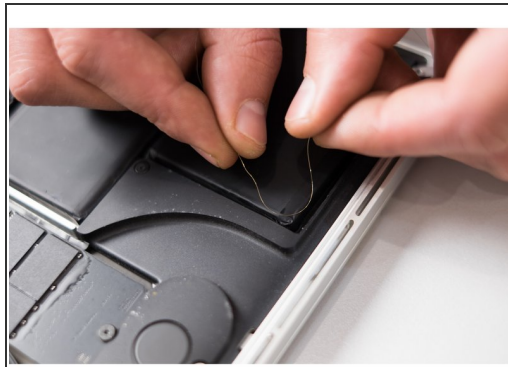
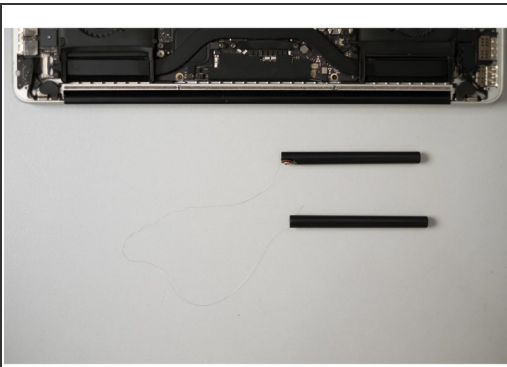
- Using the flat end of a spudger, gently pry the battery connector straight up out of its socket on the logic board.
- Bend the battery cables back and out of the way, ensuring that the battery connector doesn't accidentally make contact with the logic board.


Step 5



- Remove the following T5 Torx battery screws.

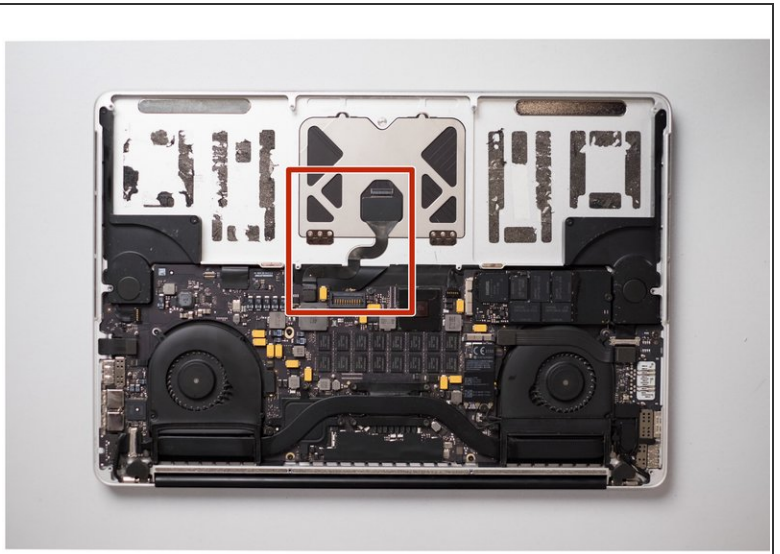
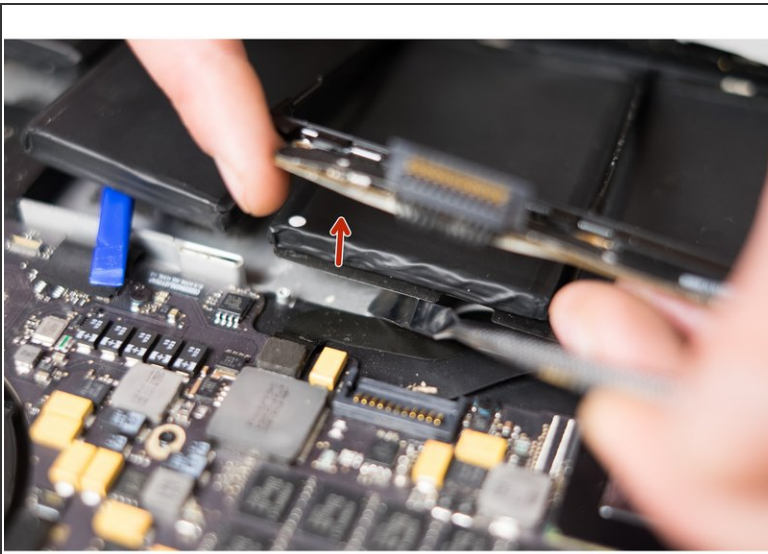
Step 6



 There is risk to damage the battery! (Do not use ANY metal tools - puncturing the battery can cause fire and possibly leak battery gel!)

- Please note: carefully cut the duct tape layer under the battery with thin wire string. Pull back and forth slowly. Do not pry up with any metal tools.

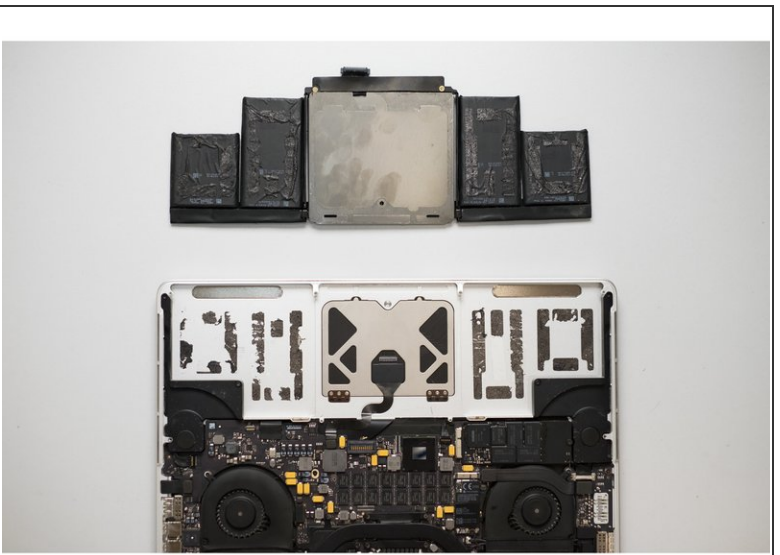
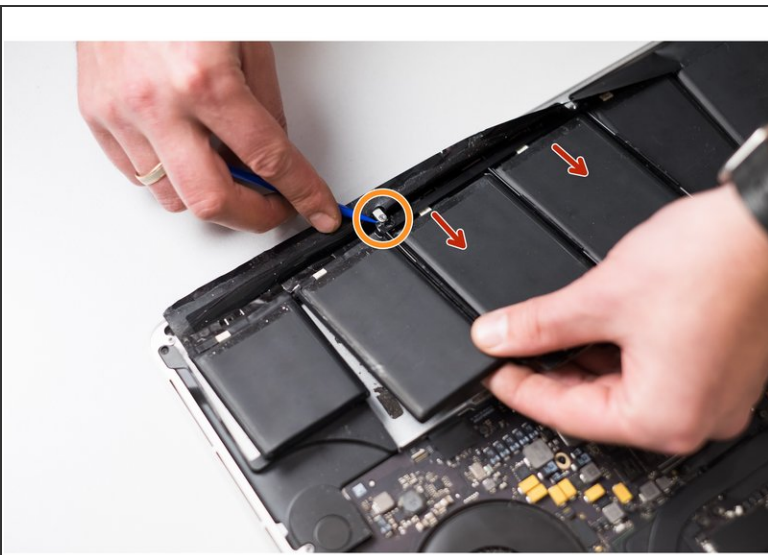
Step 7



⚠ Be sure you did not damage the loopback of the track-pad!

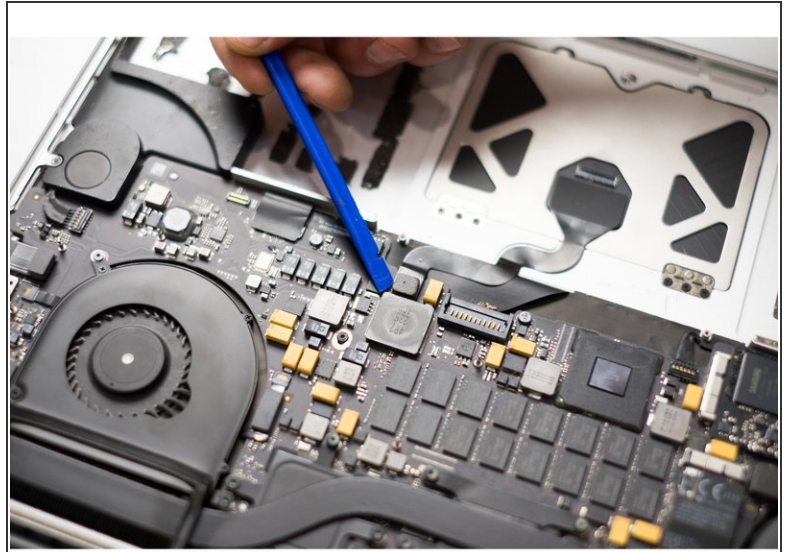
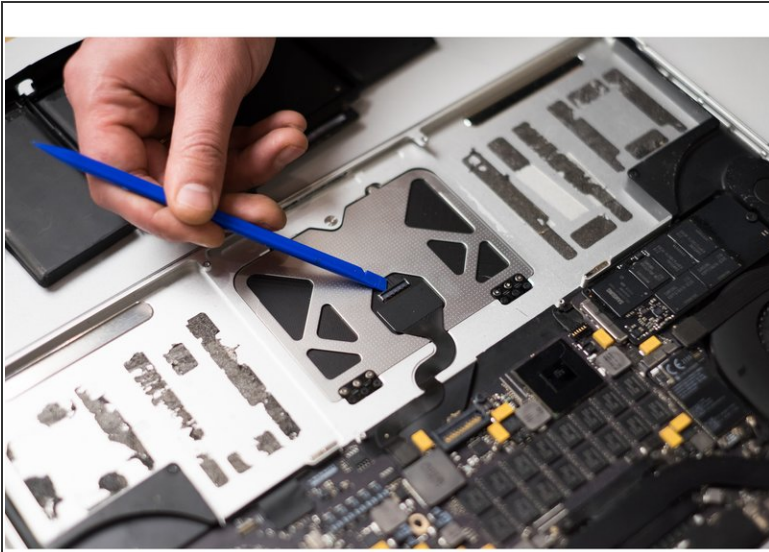
- Please lift up the plaque under the battery with metal spudger.

Step 8



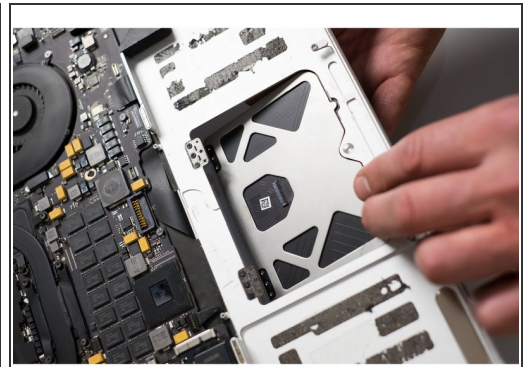
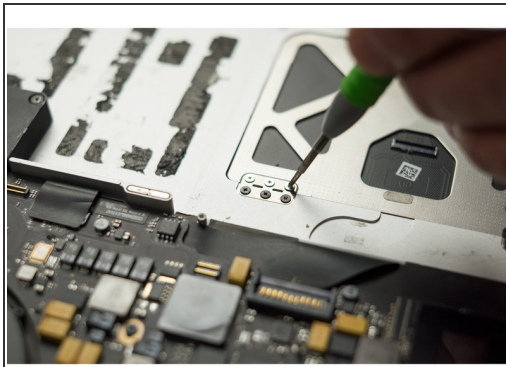
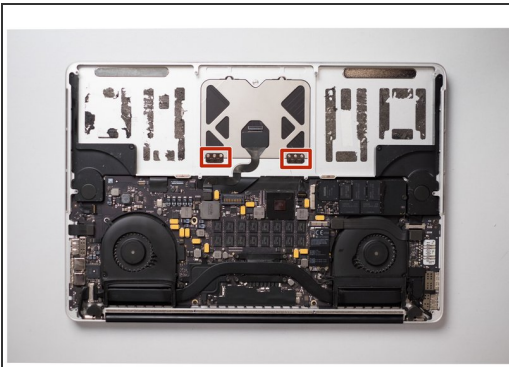
- Remove battery

Step 9



- Using the flat end of a spudger, pry the trackpad connector.

Step 10



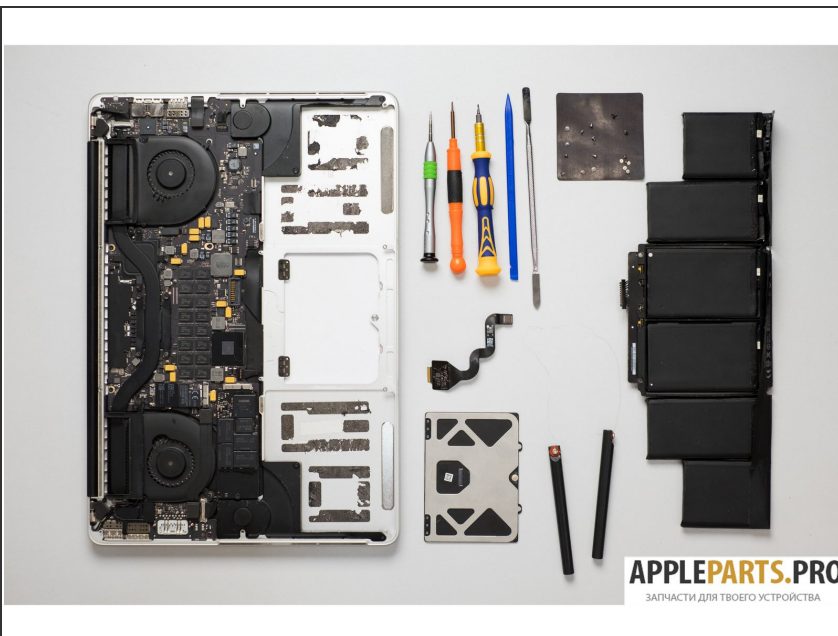
- Unscrew the light-colored screws
- Remove trackpad.

Step 11



- Adjustment of trackpad touching level

Step 12



- Good luck!

To reassemble your device, follow these instructions in reverse order.