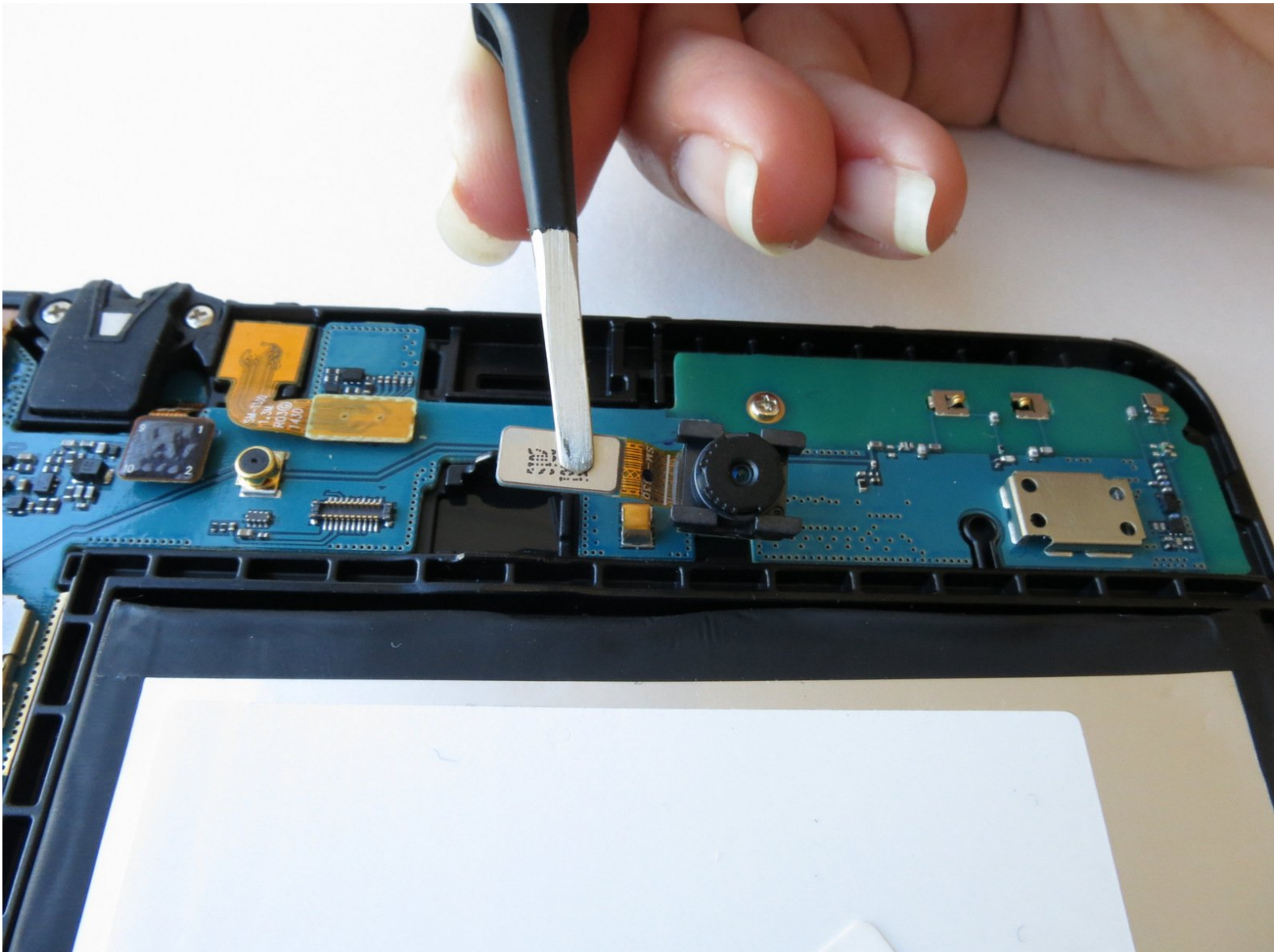




Samsung Galaxy Tab 4 8.0 Verizon Rear Facing Camera Replacement

Replace the rear-facing camera on your Samsung Galaxy Tab 4 8.0 Verizon.

Written By: Yuly Flores



INTRODUCTION

After damaging your rear-facing camera, you might feel intimidated to dig into the Samsung Galaxy Tab 4 8.0. Replacement of the camera will only require a plastic opening tool, tweezers, muscle strength, and these easy to follow instructions.



TOOLS:

- [iFixit Opening Tool](#) (1)
- [Tweezers](#) (1)



PARTS:

- [Galaxy Tab 4 8.0 Rear Camera](#) (1)

Step 1 — Rear Case



⚠ Before disassembling your Samsung Galaxy Tab 4 8.0, be sure it is powered off and you remove the SIM and Micro SD cards.

- At the top of the tablet, nudge the blue plastic opening tool between the back plastic casing and the front panel's metal rim.

⚠ Do not use excessive force when prying the clips, fastening the casing together, open because they can easily break.

Step 2



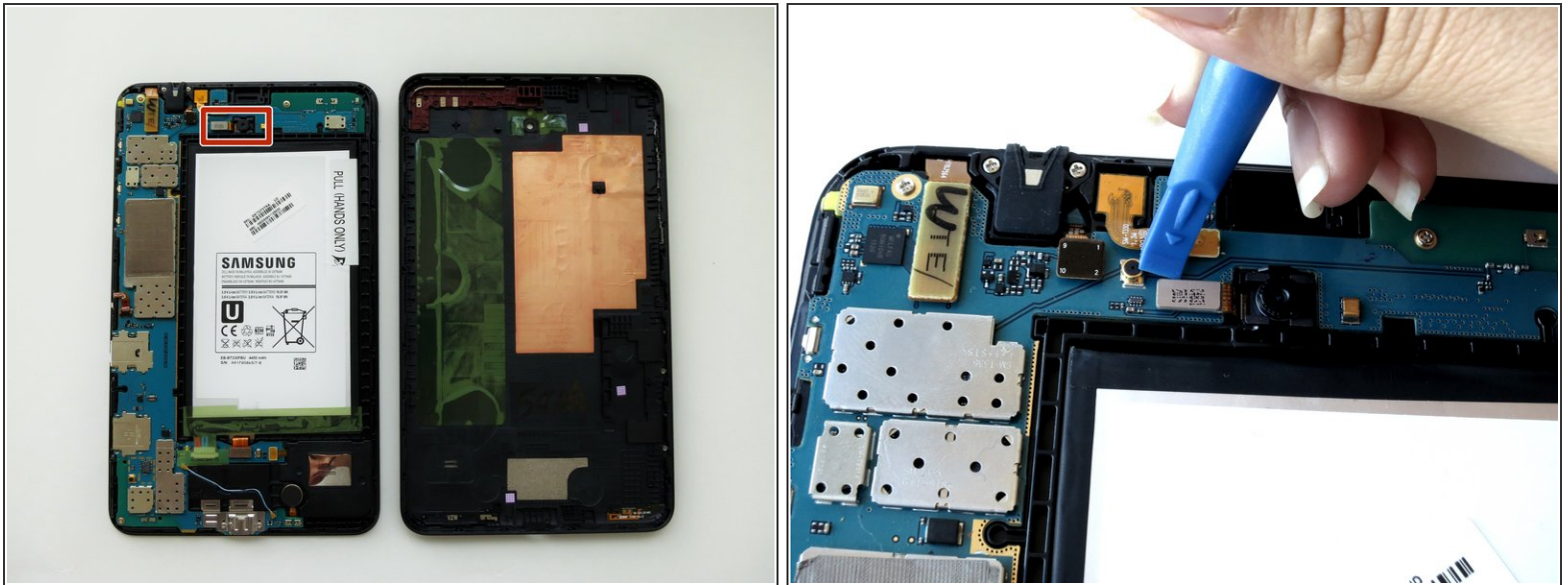
- Continue prying the blue plastic opening tool along the perimeter of the tablet to separate the back plastic casing from the front assembly panel.
- ⓘ As right-handers, we found it easiest to move clockwise and use more pressure around the corners to facilitate the process.
- ⓘ You might hear several popping noises caused by the plastic clips coming undone.

Step 3



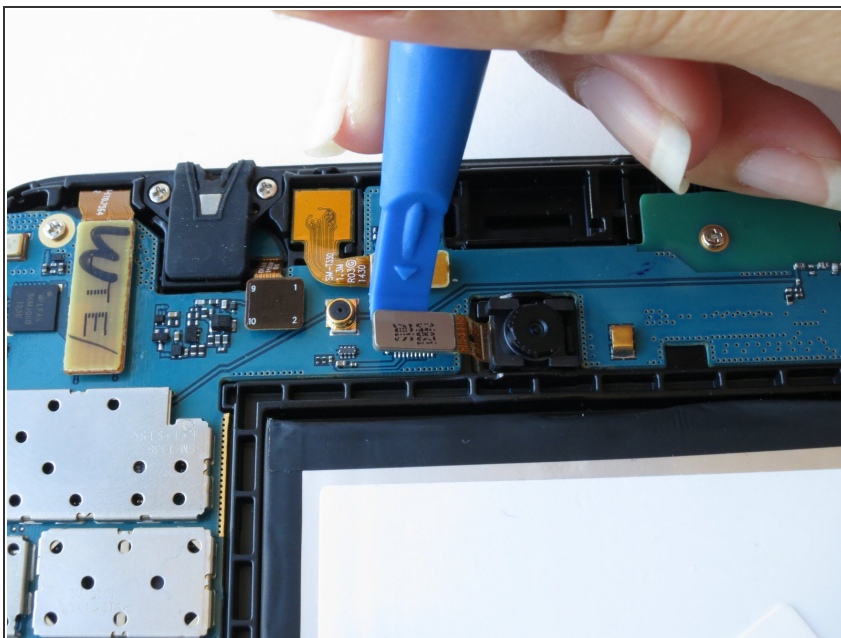
- To avoid damaging the screen, gently set the tablet with the LCD screen faced down.
- Firmly grasp the back plastic casing and lift it away from the front assembly panel.

Step 4 — Rear Facing Camera



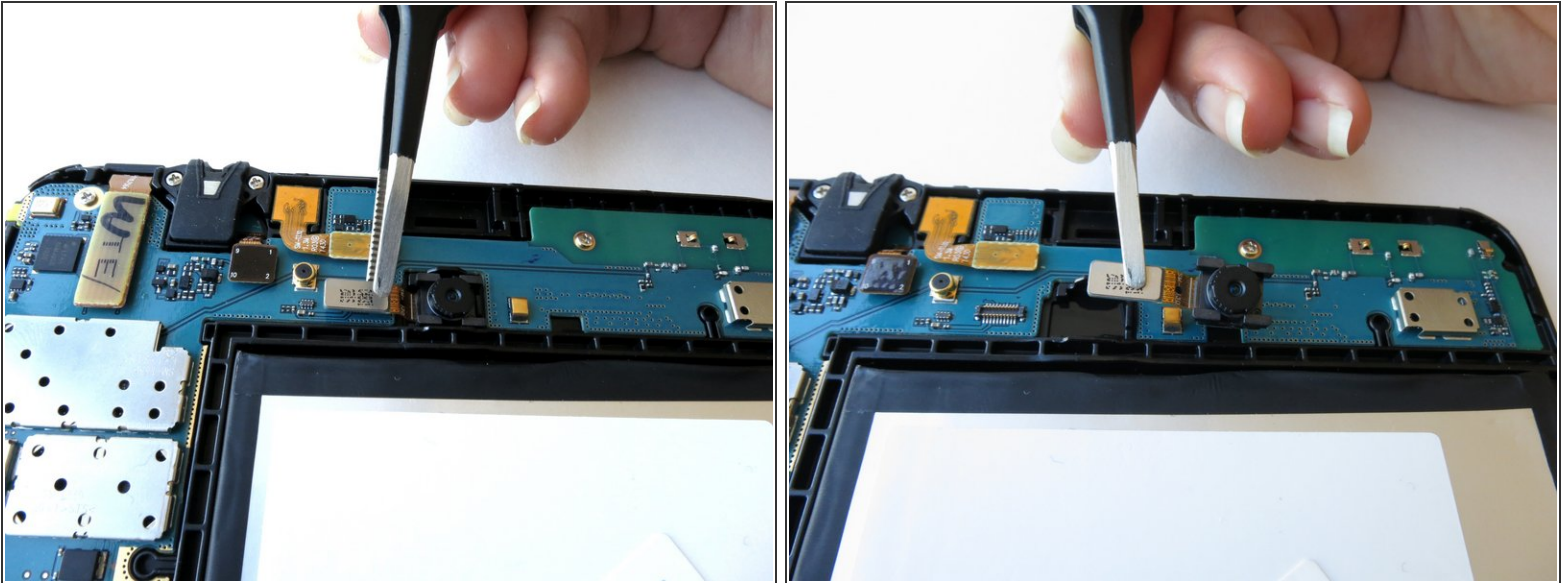
- The back camera will be located near the top of the tablet in the center above the battery.
- Carefully insert the flat end of the blue plastic opening tool under the metal rectangular end of the back camera's cable connector.

Step 5



- Slightly apply pressure and move the blue plastic opening tool downwards to pop the back camera's metallic rectangular connector from its socket on the logic board.

Step 6



- Squeeze the metallic rectangular piece with the tweezers to gently lift it from it's pit.

To reassemble your device, follow these instructions in reverse order.