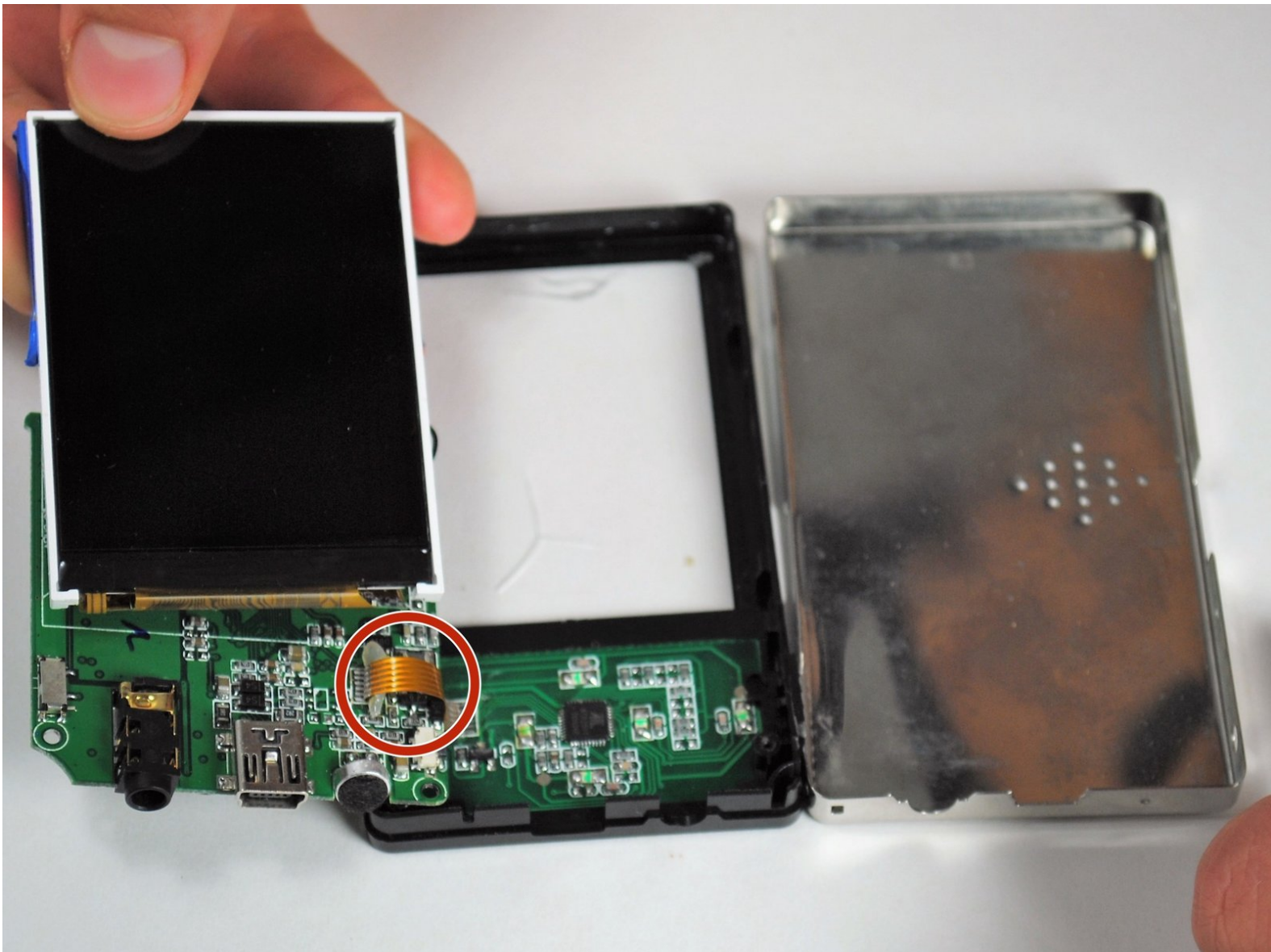




# Element GC-1020 Display Replacement

If your Element GC-1020 is not showing video or media, your display may need to be replaced.

Written By: Lashaun Noel



---

# INTRODUCTION

This simple five-step guide will show you how to replace your Element GC-1020's display.

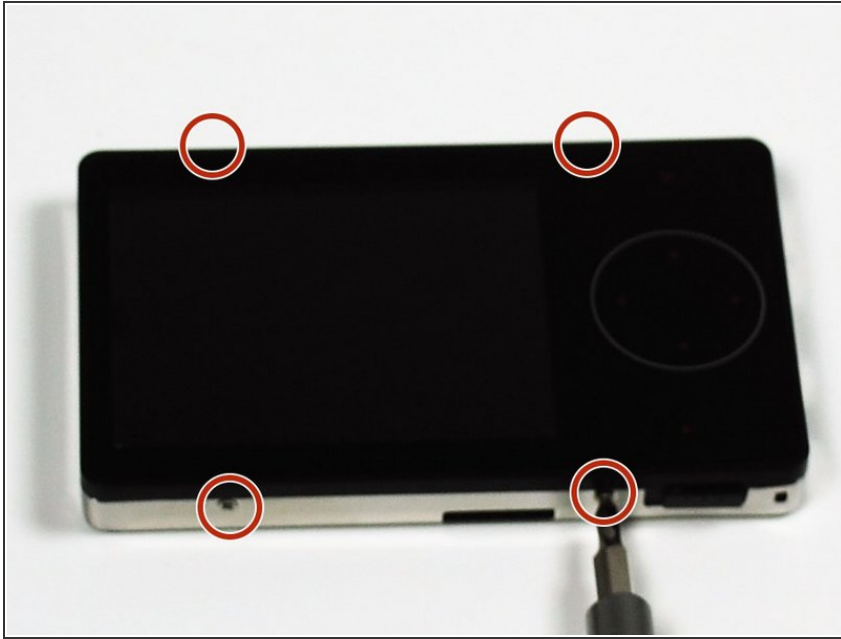
---



## TOOLS:

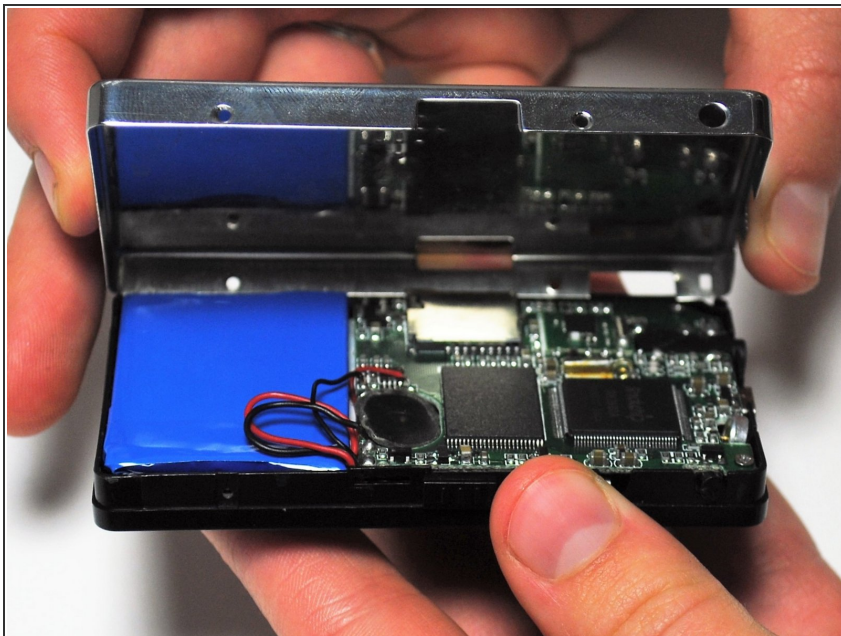
- [Phillips #0 Screwdriver](#) (1)
  - [Tweezers](#) (1)
-

## Step 1 — Back Cover Replacement Guide



- Unscrew the four screws (size: 3.175mm) on the left and right side of the Element Electronics GC-1020 device using the PH#0 screwdriver.

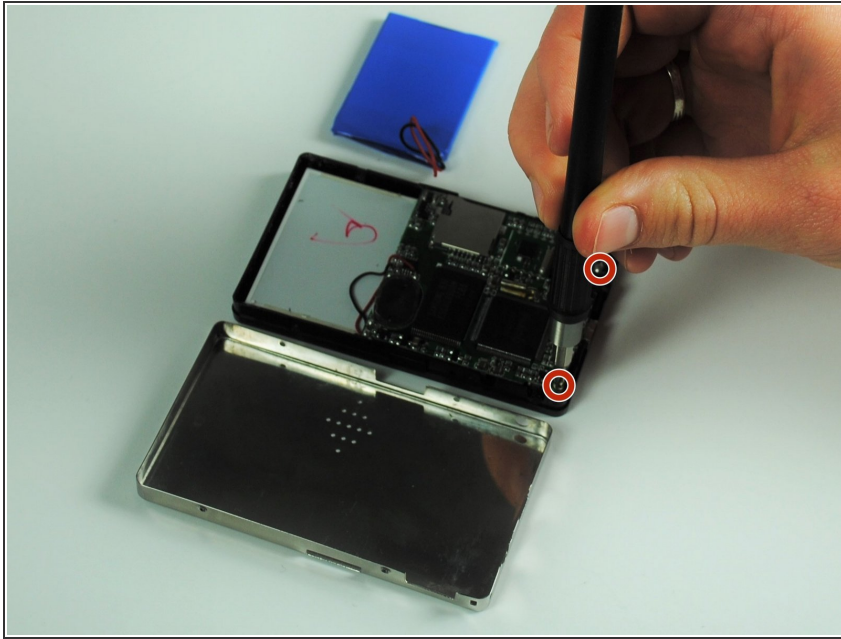
## Step 2



- Carefully pull the back of the device (the silver portion) apart from the rest of the device.
- ⓘ If you pull back too forcefully the power button would move out of place.

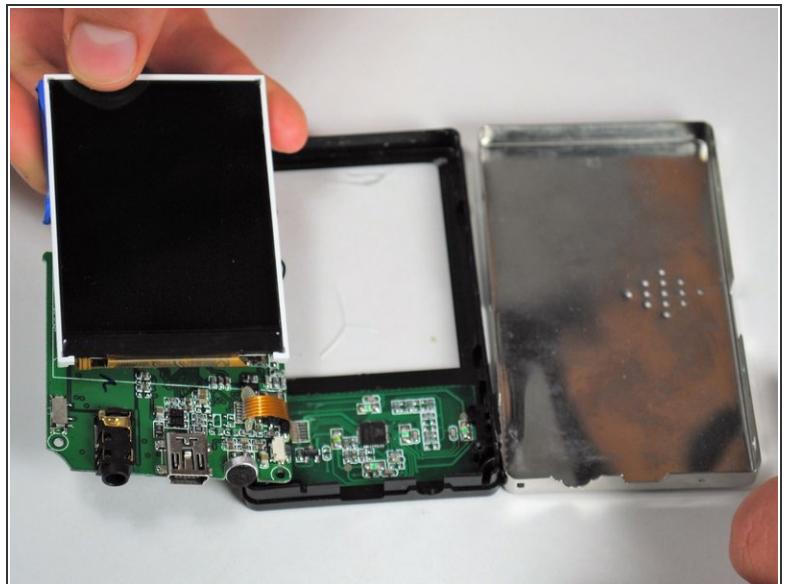
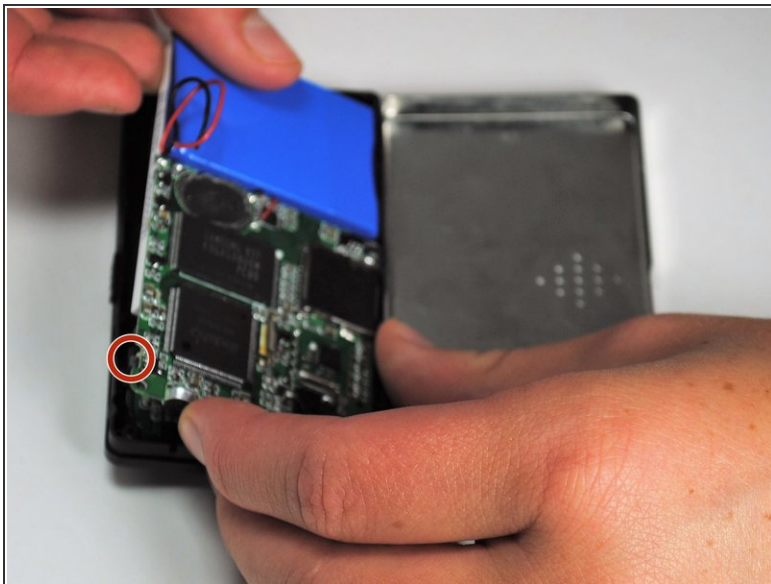


## Step 3 — Display



- Unscrew the visible Philips head screws (size: 3.968 mm) on the motherboard located on the top of left and right sides. Use a PH #0 sized screw driver head for removal.

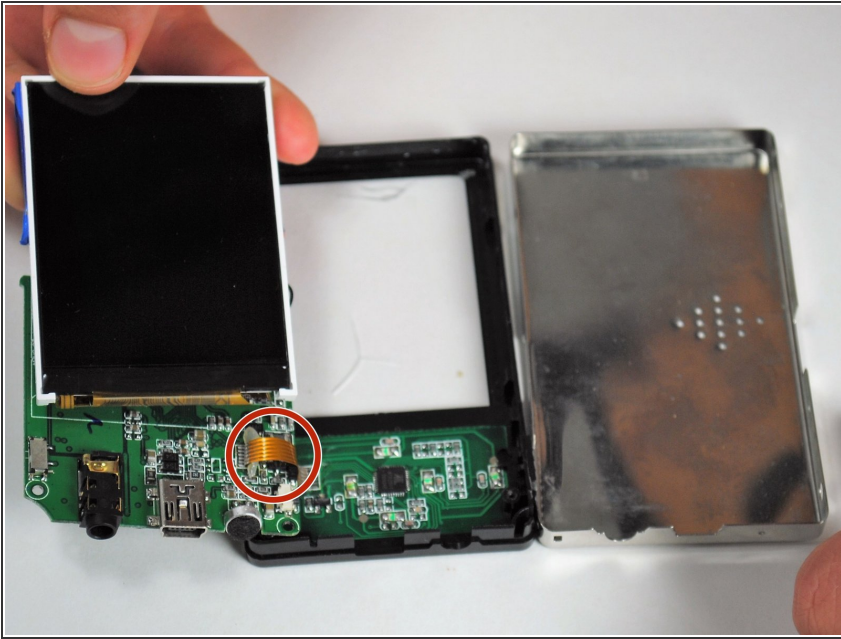
## Step 4



- Carefully bend the plastic frame to remove the motherboard.

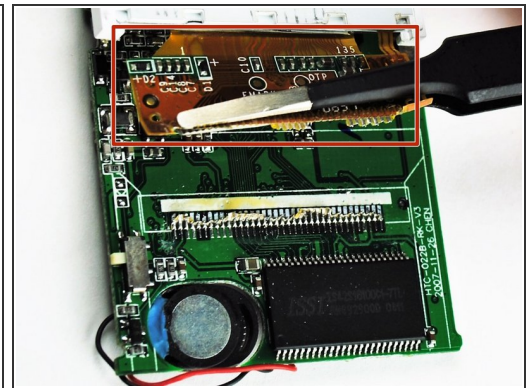
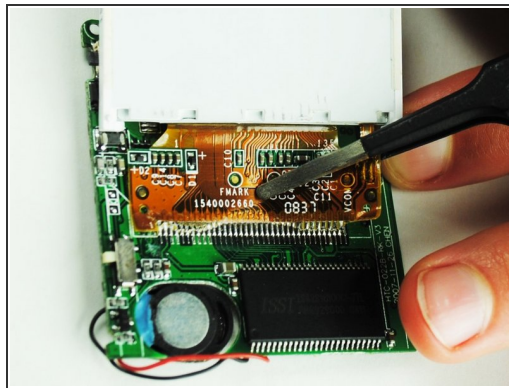
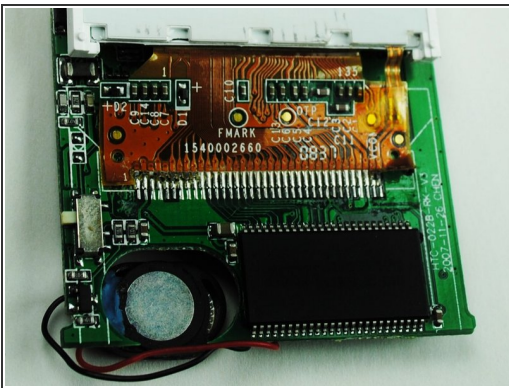
⚠ Upon doing this make sure your power button on the bottom left side stays attached to the outer frame because it will loosen as the motherboard is moved upwards.

## Step 5



- The display is attached to a dark yellow, flimsy, plastic material. This material is then attached to the motherboard. Tear off the plastic, successfully detaching the motherboard and display from each other.

## Step 6



- Once the display is by itself, separate from the rest of the device, you are ready to put in your new display.

To reassemble your device, follow these instructions in reverse order.