



HP Compaq 6910p Hard Drive Replacement

In this guide, we will illustrate how to remove...

Written By: Tyler Fricks



INTRODUCTION

In this guide, we will illustrate how to remove and replace the hard drive for this device. Tools required include thumbs and a Phillips screwdriver.



TOOLS:

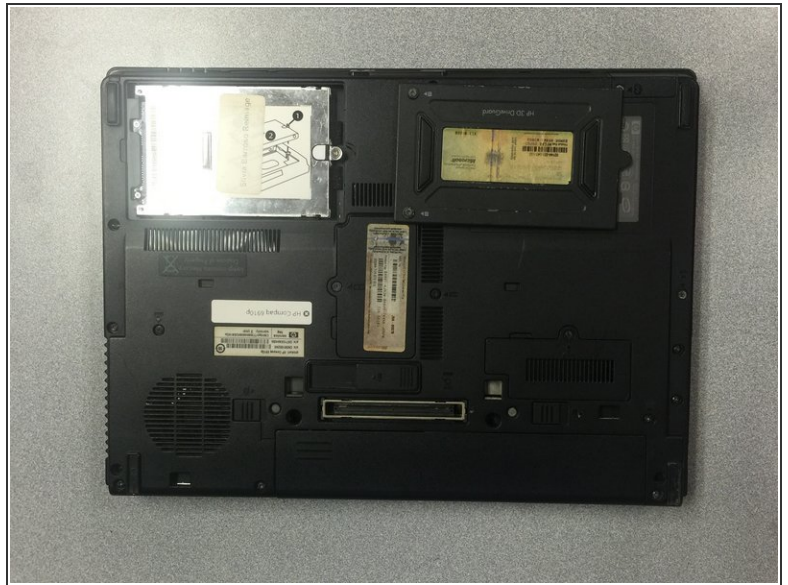
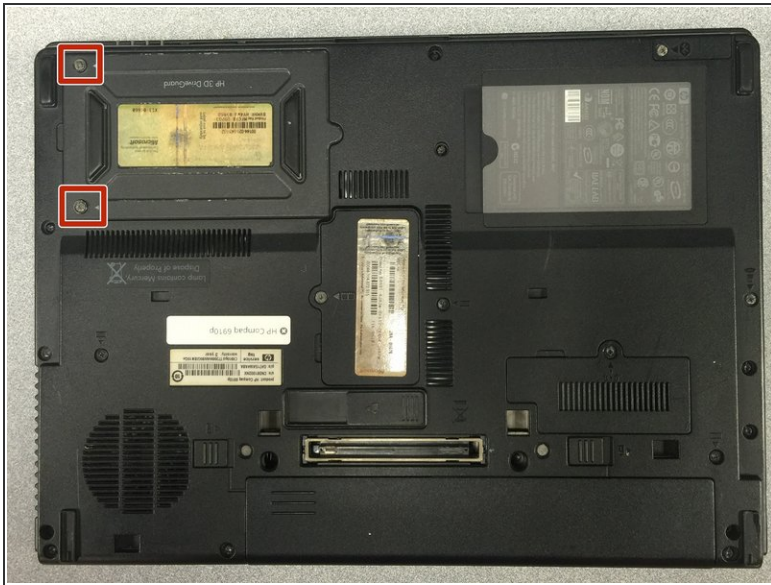
- [Phillips #1 Screwdriver](#) (1)



PARTS:

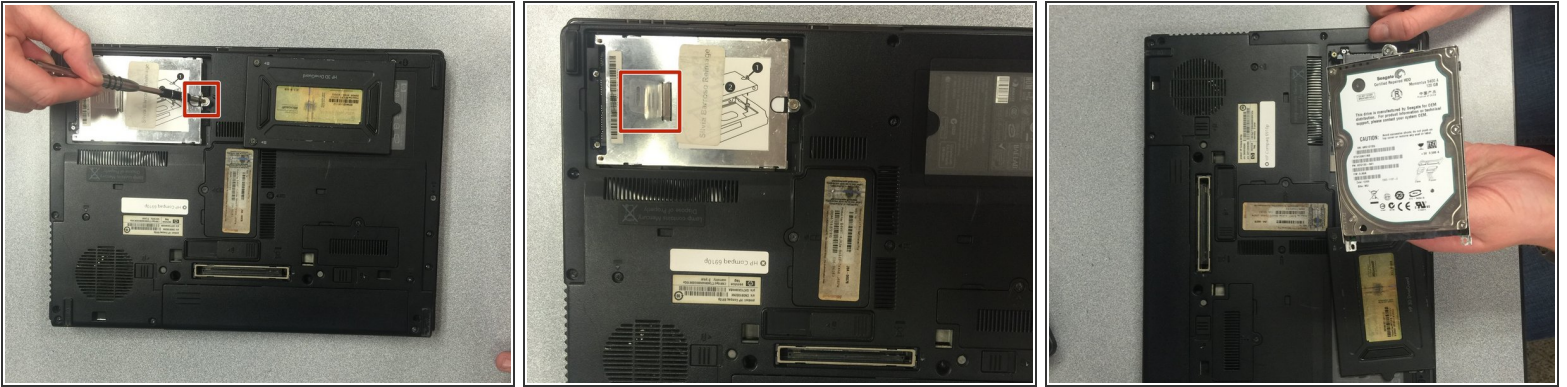
- [Crucial MX500 1 TB SSD](#) (1)
- [Crucial MX500 250 GB SSD](#) (1)
- [Crucial MX500 500 GB SSD](#) (1)
- [Crucial MX500 2 TB SSD](#) (1)

Step 1 — Hard Drive



- Loosen the two 1.5 cm Phillips #1 screws that attach the cover of the hard drive .
- Lift up the cover.

Step 2



- Loosen the 1.5 cm Phillips #1 screw attaching the hard drive to the laptop.
- Locate the tab on the hard drive.
- Use this tab to pull the hard drive toward the right side of the case.

⚠ Do not pull up on the tab!

- Remove the hard drive.

To reassemble your device, follow these instructions in reverse order.