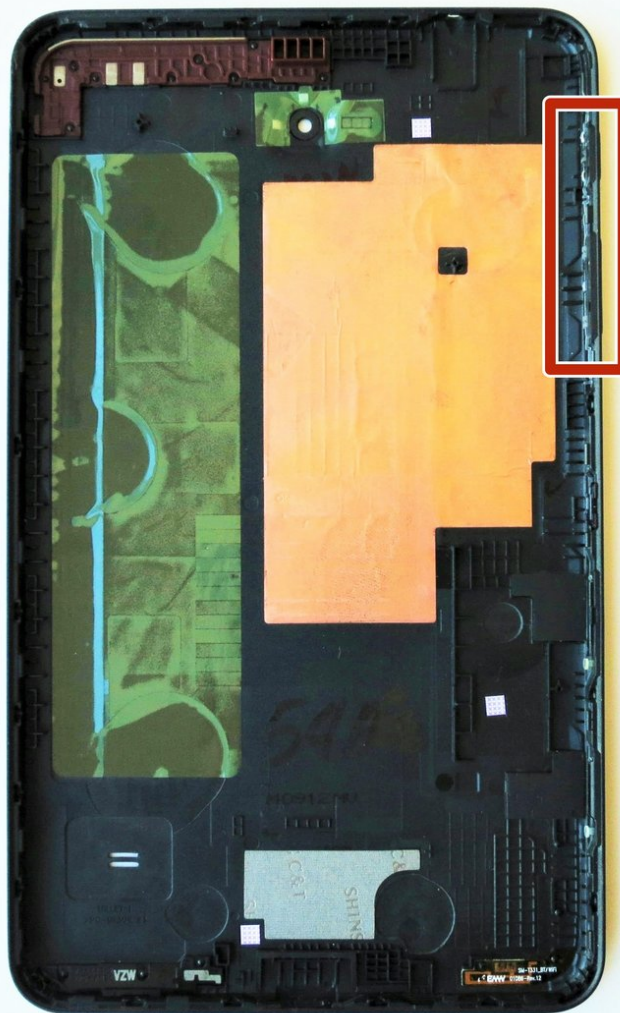




Samsung Galaxy Tab 4 8.0 Verizon Power/Lock and Volume Button Replacement

Breakage of either the power/lock button or volume button can be easily fixed with the following guide.

Written By: Ofelia Cruz



INTRODUCTION

Volume and lock buttons are crucial to facilitate the use and safety of any device. Replacing these components are a breeze. For this guide, all you need are these easy steps and a few tools to facilitate the process.



TOOLS:

- [iFixit Opening Tool](#) (1)
 - [Spudger](#) (1)
 - [Tweezers](#) (1)
-

Step 1 — Rear Case

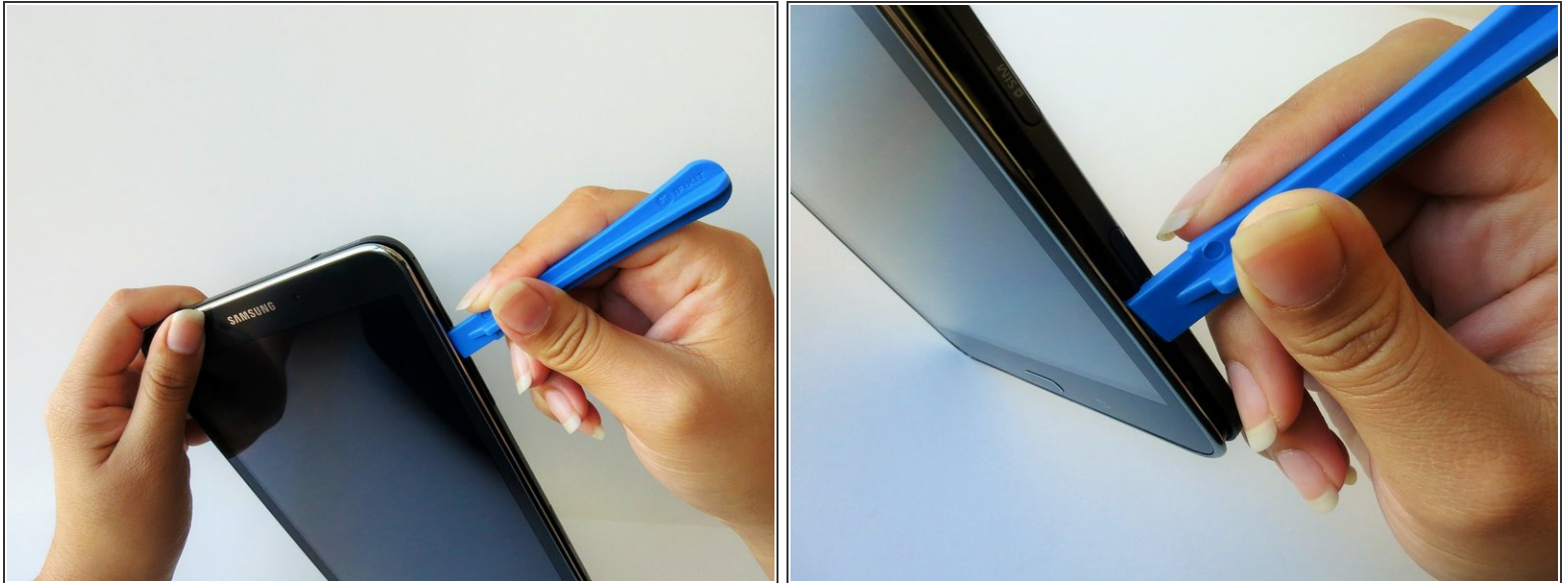


⚠ Before disassembling your Samsung Galaxy Tab 4 8.0, be sure it is powered off and you remove the SIM and Micro SD cards.

- At the top of the tablet, nudge the blue plastic opening tool between the back plastic casing and the front panel's metal rim.

⚠ Do not use excessive force when prying the clips, fastening the casing together, open because they can easily break.

Step 2



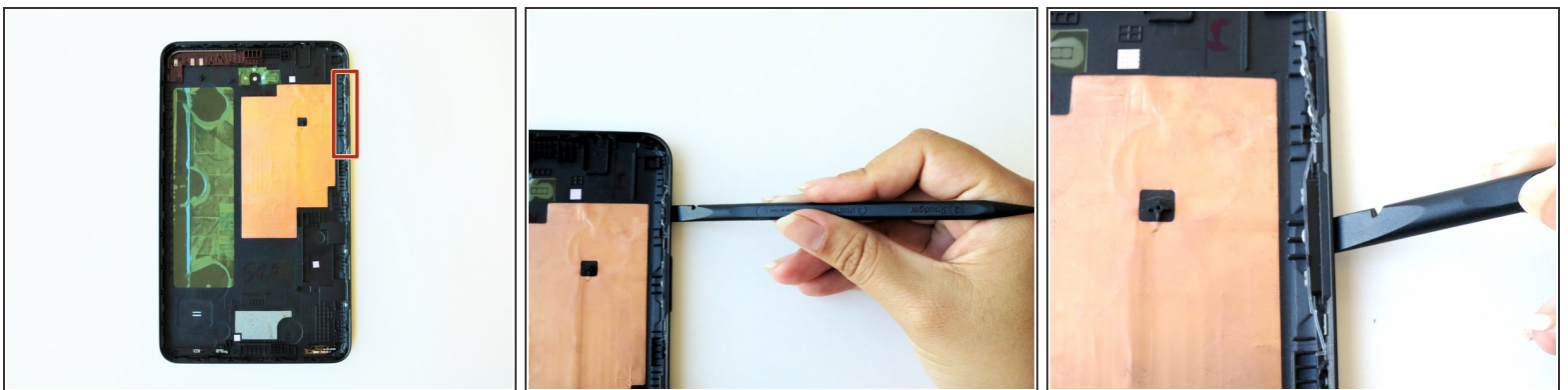
- Continue prying the blue plastic opening tool along the perimeter of the tablet to separate the back plastic casing from the front assembly panel.
- ⓘ As right-handers, we found it easiest to move clockwise and use more pressure around the corners to facilitate the process.
- ⓘ You might hear several popping noises caused by the plastic clips coming undone.

Step 3



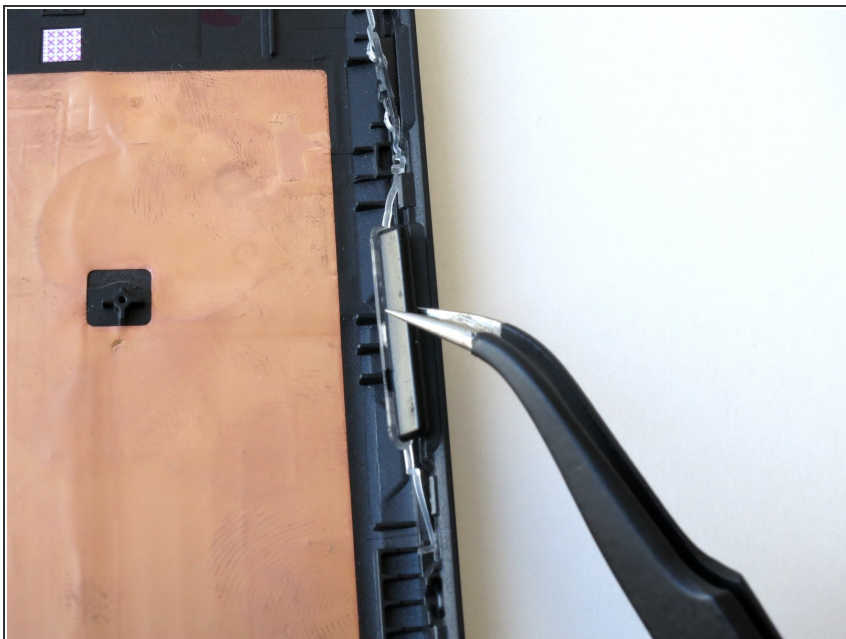
- To avoid damaging the screen, gently set the tablet with the LCD screen faced down.
- Firmly grasp the back plastic casing and lift it away from the front assembly panel.

Step 4 — Power/Lock and Volume Button



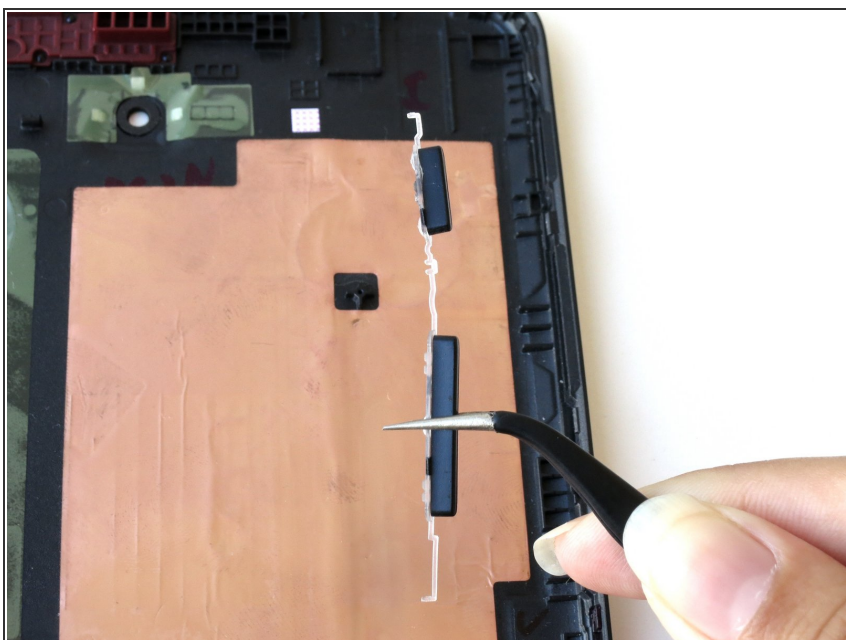
- The button will be attached to the back casing of the tablet.
- Using the spudger, first push the power/lock button then the volume button inwards from the opening towards the center of the tablet.

Step 5



- Using a precision tweezer, detach the clear plastic wire from the back casing by pulling the wire out of its slot.

Step 6



- Grab the power/volume button with a precision tweezer to completely lift the buttons out of the back casing.

To reassemble your device, follow these instructions in reverse order.