



# Garmin Nuvi 2797LMT Battery Replacement

Replacing your battery will make your GPS run like it's new.

Written By: baileykaytar



# INTRODUCTION

This guide will help you replace your battery in a few short steps.



## TOOLS:

- [iFixit Opening Tools](#) (1)
- [T6 Torx Screwdriver](#) (1)




## PARTS:

- [Garmin Nuvi 2757/2797 and Dezl 760 Replacement Battery](#) (1)

## Step 1 — Battery




-  Before you begin make sure to turn off your GPS.
- Using your T-6 Torx Screwdriver, unscrew the ten 2.38 mm torx T-6 screws from the back of your GPS.

## Step 2

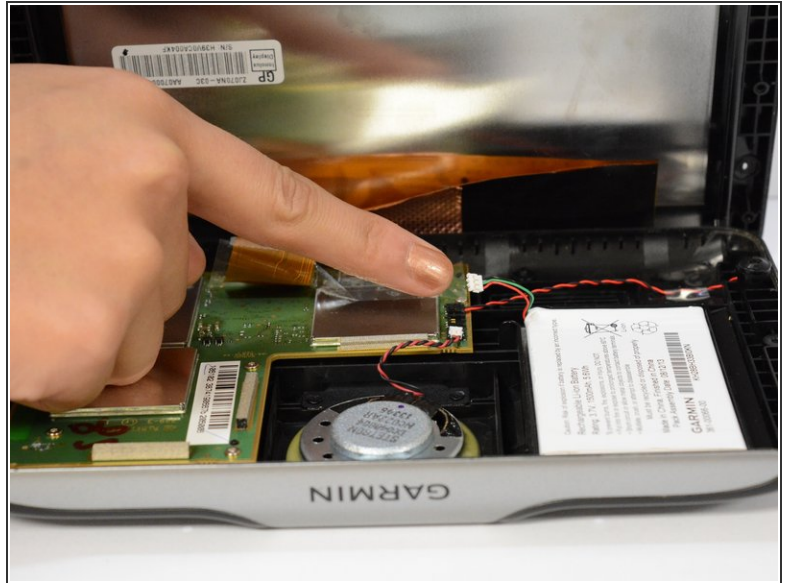


- Using the biggest plastic opening tool, pry open the GPS from the sides. You should now be able to see everything inside the GPS.

 Be careful when opening the GPS because of the ribbon attached to the screen. It can tear easily.



### Step 3



- With the device open, locate the battery with its wire connector plugged into the motherboard. Now delicately detach the battery connector from the center by inserting a spudger underneath the power wire and lift up.

### Step 4



- Now using the small plastic opening tool, pry the battery up from the sides.
- ⓘ The battery has been attached with strong adhesive so you will need to use a little bit of force when prying it out.

To reassemble your device, follow these instructions in reverse order.