



Sony Xperia Z5 LCD Screen Replacement

Here shows how to replace Sony Xperia Z5 LCD Screen assembly.

Written By: Lenka



INTRODUCTION

This video shows how to replace and reassemble Sony Xperia Z5 LCD display.

[video: <https://www.youtube.com/watch?v=MF9dcmbQhIE>]



TOOLS:

- [Spudger](#) (1)
- [Tweezers](#) (1)
- [Suction Handle](#) (1)
- [Phillips #00 Screwdriver](#) (1)
- [iOpener](#) (1)
- [iFixit Opening Picks set of 6](#) (1)
- [SIM Card Eject Tool](#) (1)



PARTS:

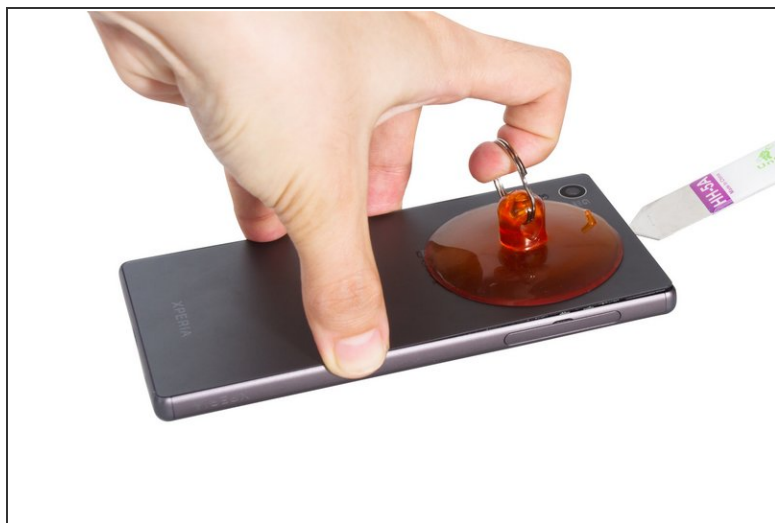
- [Sony Xperia Z5 Screen](#) (1)
- [Sony Xperia Z5 Screen Assembly](#) (1)
- [Sony Xperia Z5 Display Adhesive Strips](#) (1)
- [Sony Xperia Z5 Back Cover Adhesive](#) (1)

Step 1 — LCD Screen



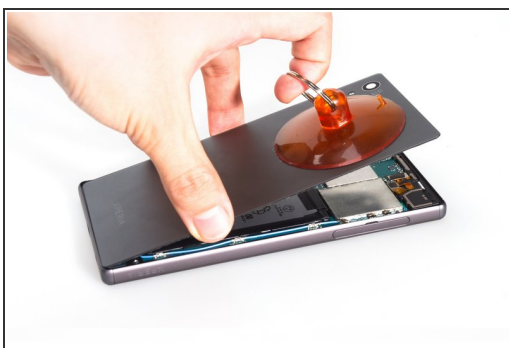
- Remove SIM card tray.

Step 2



- Heat the back cover to soften the adhesive sticker.
- Place the suction cup and insert metal opening tool to open a gap from top side.

Step 3



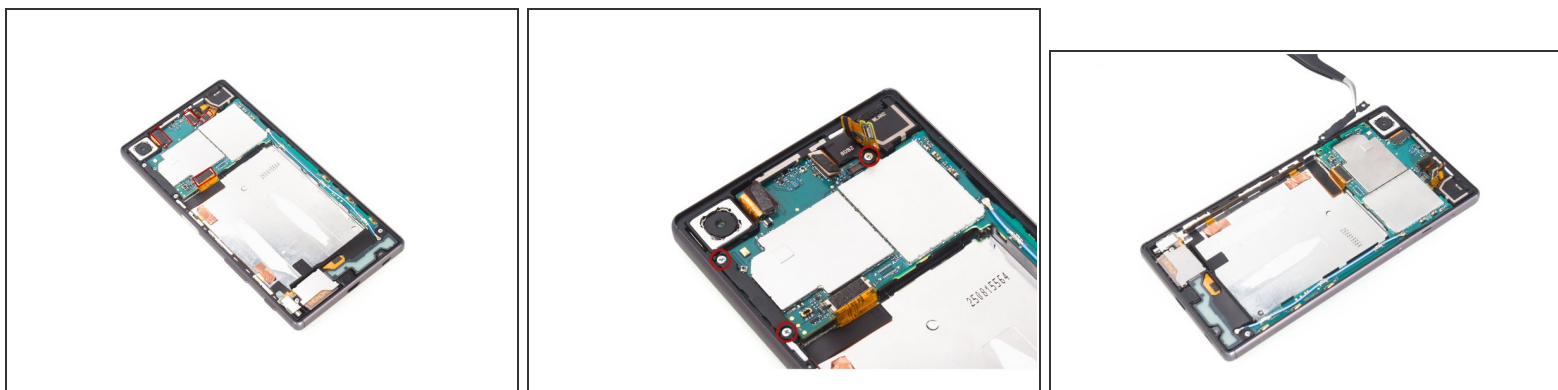
- Insert the guitar pick and slide it to cut the adhesive sticker underneath.
- Remove back cover.

Step 4



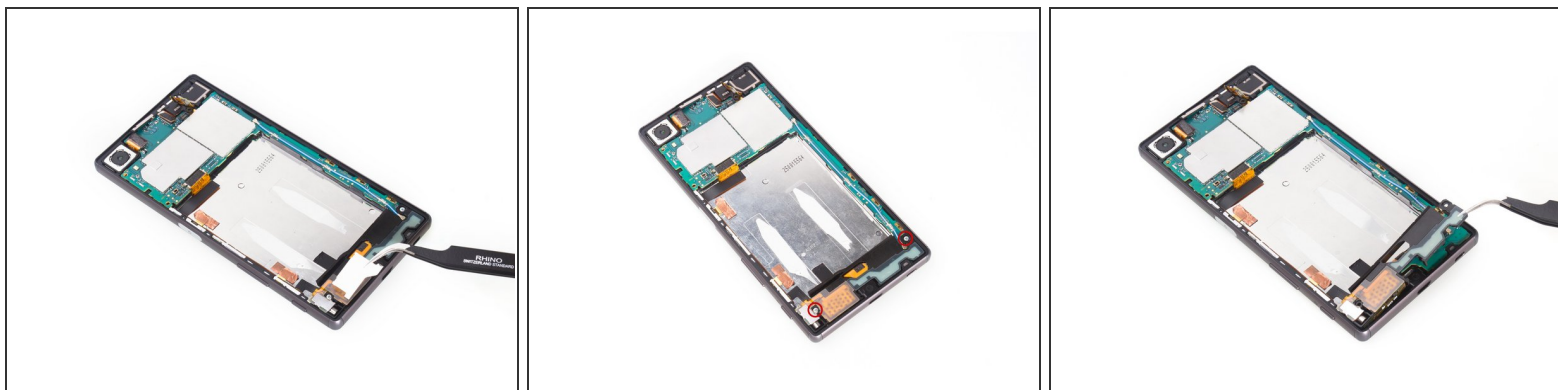
- Release battery connector.
- Pull off the adhesive tape underneath the battery.
- Pry up battery.

Step 5



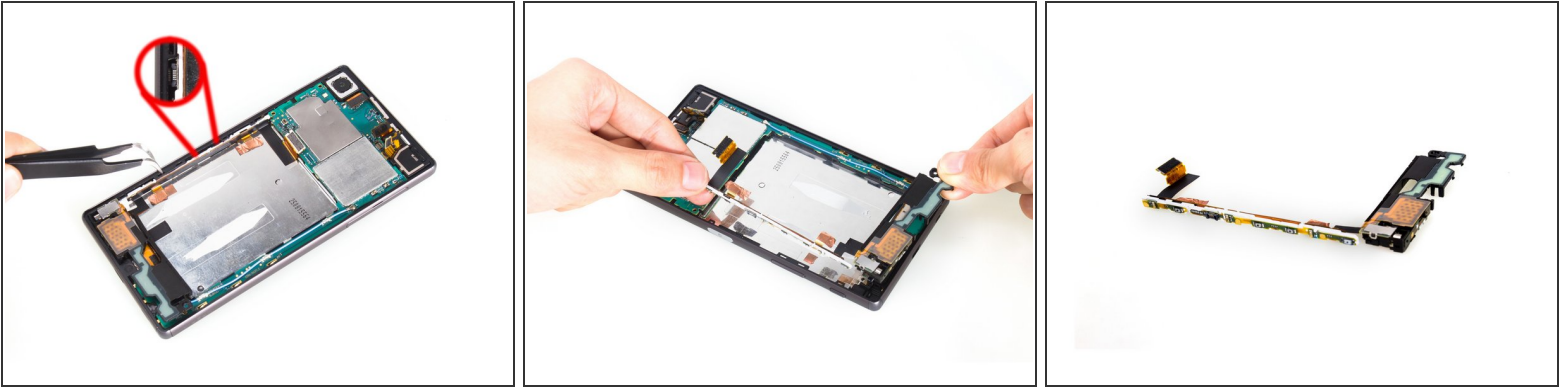
- Release rear camera connector, front camera connector, audio jack connector and main flex connector on the motherboard.
- Twist off screws there.
- Remove that rubber securing bracket.

Step 6



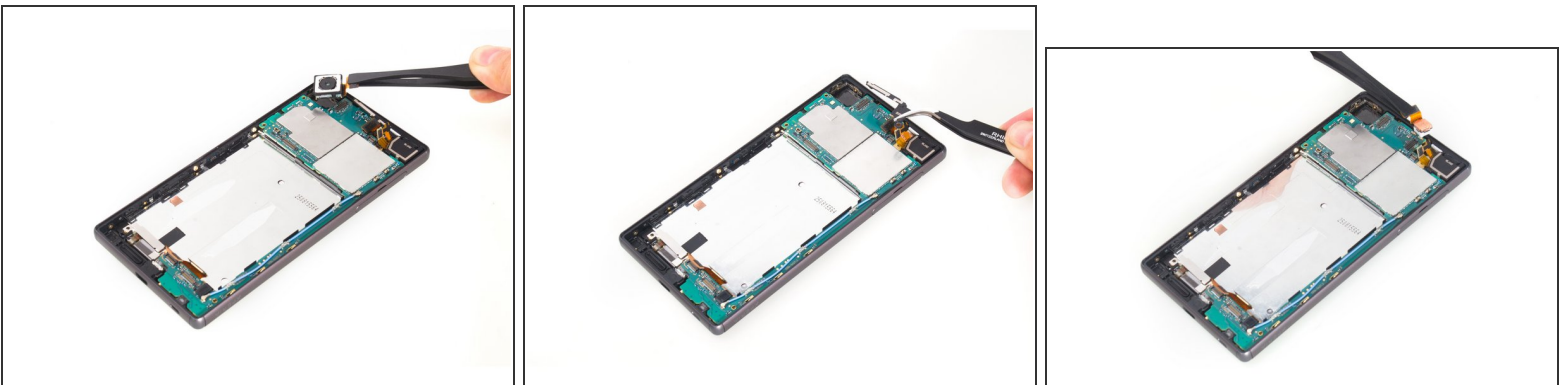
- Remove metal cover and twist off two screws.
- Loosen the bottom side of main flex assembly.

Step 7



- Loosen side button contactors (Attention: the fingerprint sensor is here, be careful to loosen it), then remove the whole main flex assembly.

Step 8



- Remove rear camera.
- Remove that securing bracket, then remove front camera.

Step 9



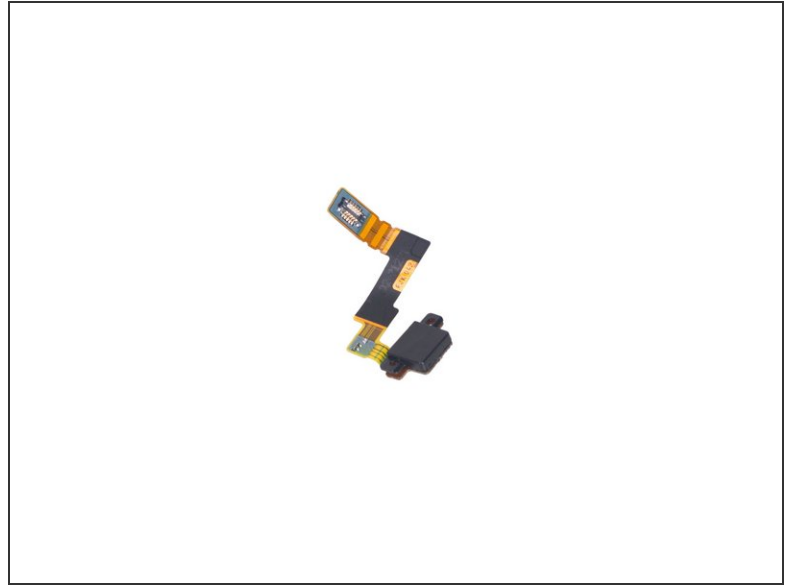
- Release LCD screen flex connector, charging port connector, microphone connector here.
- Remove motherboard.

Step 10



- Remove charging port flex.

Step 11



- Remove microphone.

Step 12



- Remove the metal bracket covering on the LCD screen flex.

Step 13



- The sticker underneath is strong, so use heat gun to soften it for a few minutes.
- Remove LCD screen carefully.
- ⓘ Take extra care when prying along the bottom edge of the display to avoid damaging the display cable.

Step 14



- Done.

To reassemble your device, follow these instructions in reverse order.