



# HP ProOne 600 G1 Prerequisite only

prerequisite only

Written By: Maxwell Snook



---

# INTRODUCTION

Back Removal.



## TOOLS:

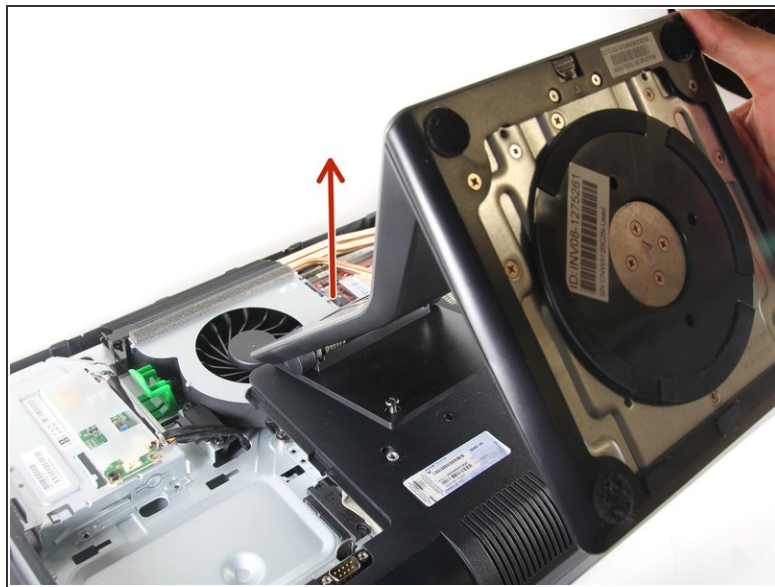
- [T15 Torx Screwdriver](#) (1)
-

## Step 1 — Back Removal



- Push the unlock tabs on the back of the monitor in and towards each other while sliding the back cover up.

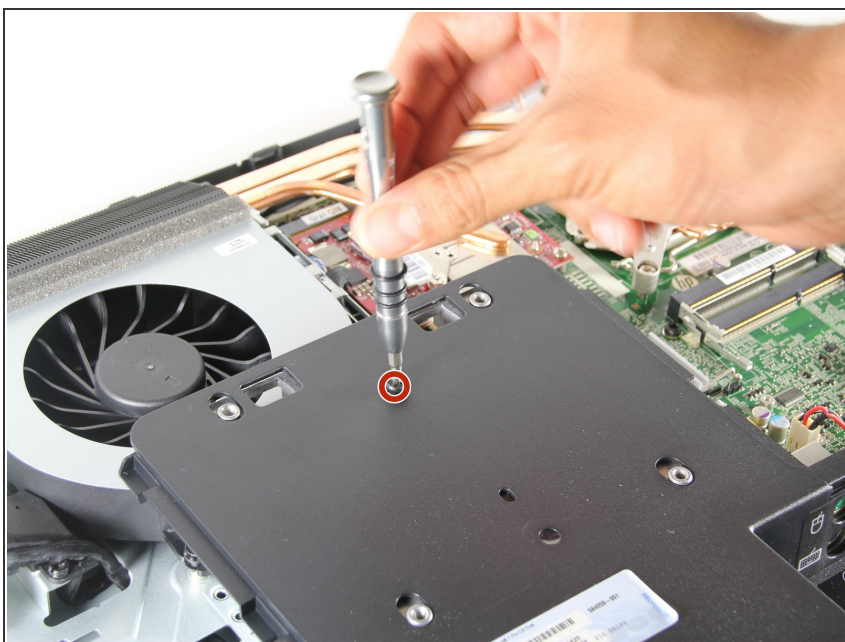
## Step 2



- Loosen the two 1/2" screws , with the T15 Torx Screwdriver, on each side of the stand. Remove stand.



## Step 3



- Take out the single 3/8" screw, with the T15 Torx Screwdriver, from the middle of the backplate.

## Step 4



- Remove the backplate by pulling it back towards you.
- ⓘ Small plastic tabs hold in the backplate, pull these up to remove it.

To reassemble your device, follow these instructions in reverse order.