



# Dell Inspiron 600m Keyboard Replacement

In this guide the user will remove the old...

Written By: Peter Hallsten



## INTRODUCTION

In this guide the user will remove the old keyboard and replace it with a new keyboard through the top of the base.



### TOOLS:

- [Phillips #00 Screwdriver](#) (1)
- [Flathead 3/32" or 2.5 mm Screwdriver](#) (1)



### PARTS:

- [Dell Inspiron 600m Keyboard](#) (1)

## Step 1 — Battery



- Flip laptop upside down and locate the battery as shown in the images.
- Push in the tab on the battery and lift up. The battery should detach very easily.

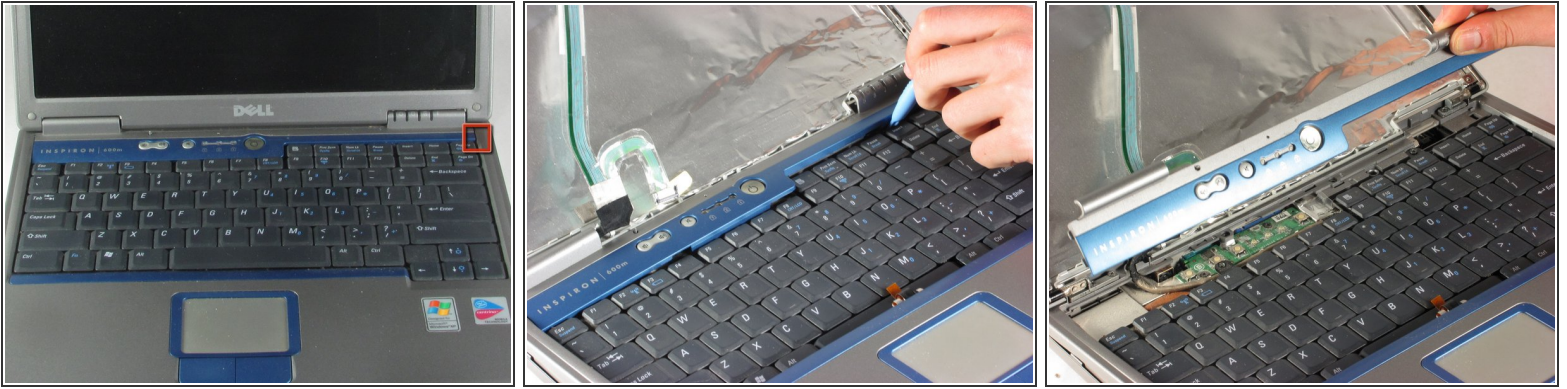
## Step 2 — Keyboard



- Orient laptop with the keyboard facing upward and the lid open.



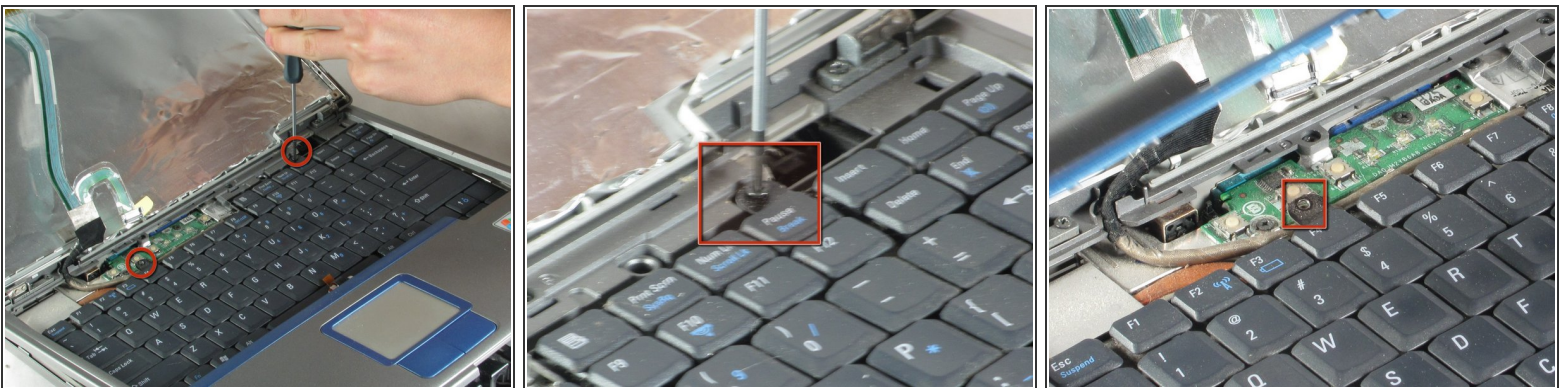
## Step 3



**⚠ Caution the face plate is a fragile piece of plastic. Handle carefully.**

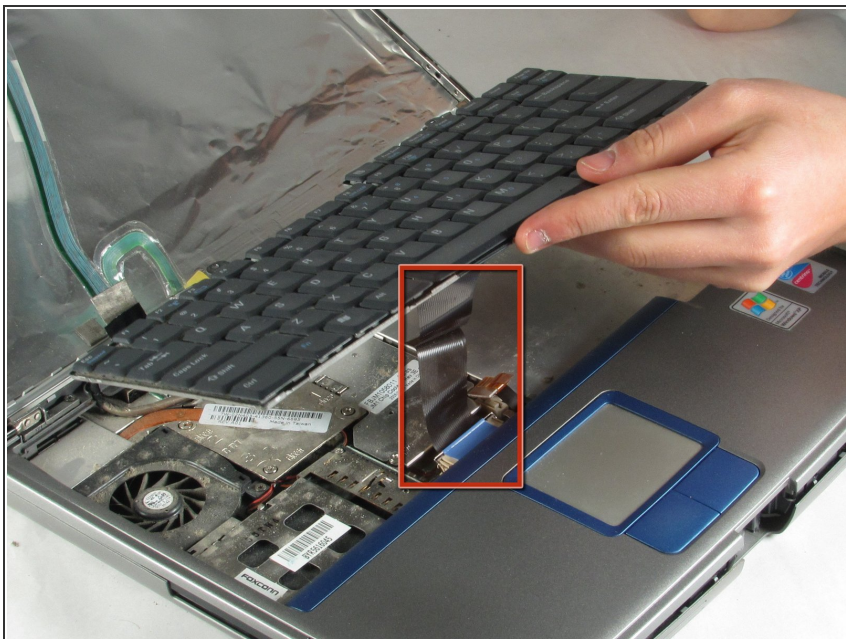
- Start in the upper right corner and work to the left when removing the face plate (includes power button and volume controls).
- Use a flathead screwdriver (or anything flat and strong) to wedge underneath the face plate.
- Carefully lift the screwdriver to remove the face plate.

## Step 4



- Use a the Phillips screwdriver to remove the two screws.

## Step 5



- Gently slide keyboard toward screen.

⚠ Lift keyboard carefully. It is attached by a ribbon cable.

## Step 6



- Pull upward on blue tab to disconnect keyboard.

To reassemble your device, follow these instructions in reverse order.