



Sony Cyber-shot DSC-TX55 SD Memory Card Replacement

This guide will teach you how properly replace the SD memory card.

Written By: Megan East



INTRODUCTION

The guide will teach you how to appropriately remove or replace your SD memory card.

Step 1 — SD Memory Card



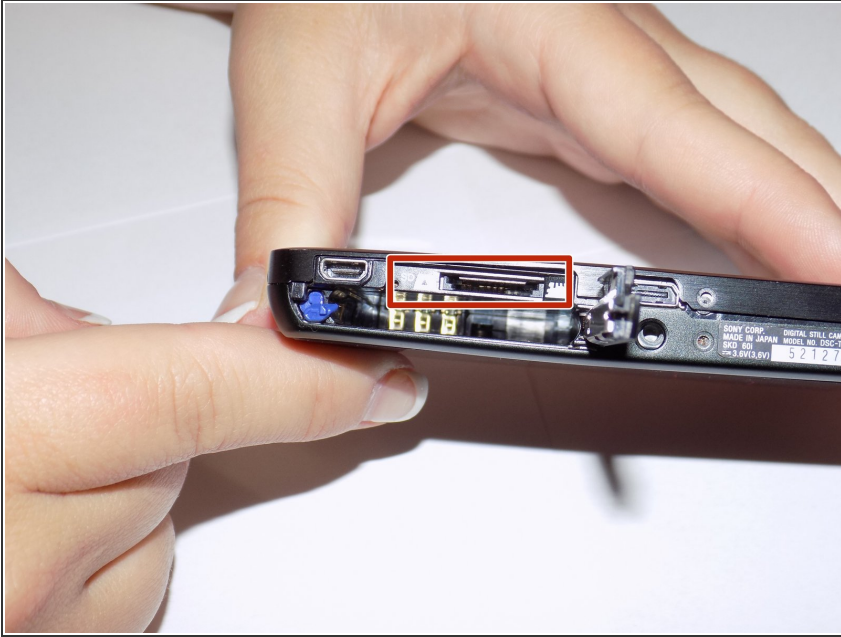
- Turn your device so the battery opening is facing upward.

Step 2



- With your finger, slightly move the slider to the right.

Step 3



- There will be a large place for the battery and a smaller space for the SD memory card, as boxed.

To reassemble your device, follow these instructions in reverse order.