



# MacBook Pro 15" Retina Display Early 2013

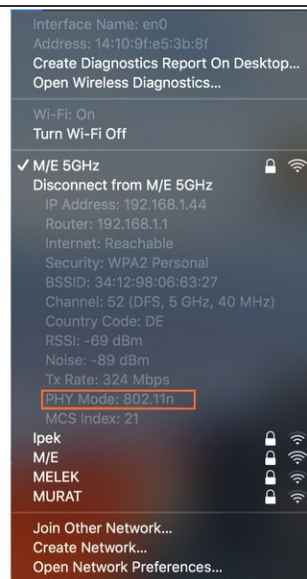
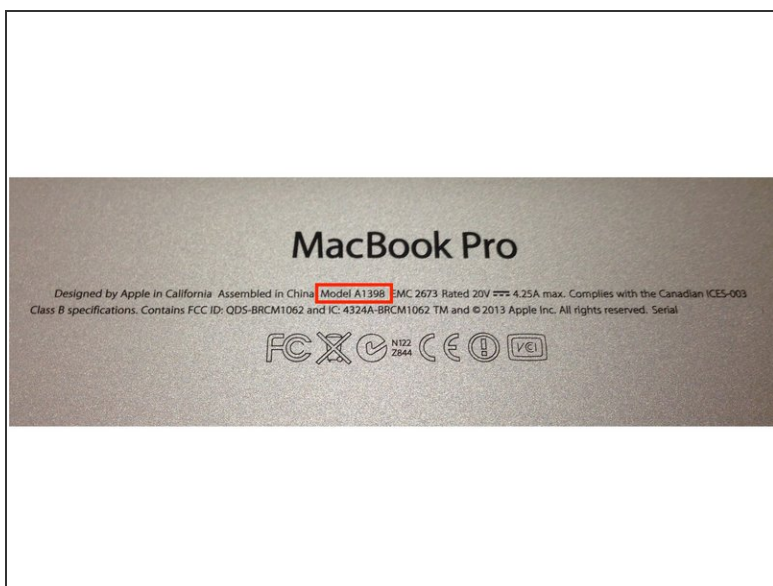
## Airport wireless card Replacement

Replace your MBPr airport wireless -n card to new -ac card

Written By: Ender



## Step 1 — MacBook Pro 15" Retina Display Early 2013 Airport wireless card Replacement



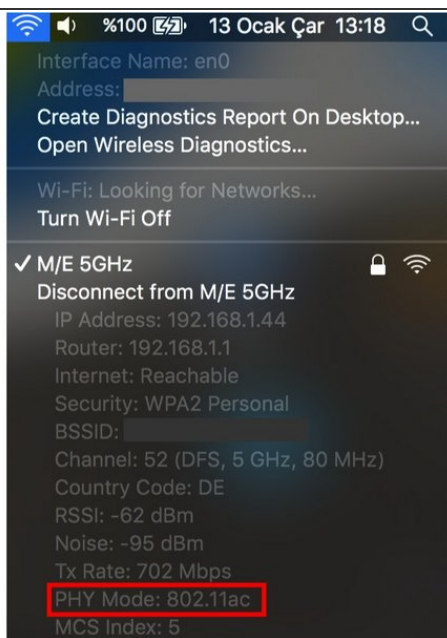
- Check your model number (written on back side of your mbpr) before buy a new wireless card. As per my mbp model, I ordered Broadcom [BCM94360CSAX](#) wireless ac and bluetooth 4.0
- You can learn your current PHY mode by holding "option" key and press wireless symbol on your screen.

## Step 2



- BCM94331 CSAX
- BCM94360C
- You can remove and replace new card by the [guide](#) of this beautiful site : )

## Step 3



- That's it. Now the connection becomes "ac" new card works perfectly