



# iPad Mini 3 LTE Front Panel Replacement

Use this guide to fix your iPad Mini 3 LTE...

Written By: Sam Goldheart



# INTRODUCTION

Use this guide to fix your iPad Mini 3 LTE screen. This guide will show you how to replace the front panel, including digitizer, home button, and display glass on your iPad Mini 3 LTE.

This guide will also show you how to remove and transfer the smart cover magnets to your new digitizer. Without these magnets your smart cover will not stay shut.

Parts of this guide were shot with a Wi-Fi model and as such the internals may look slightly different from the LTE model. The procedure is the same for both models except where noted.

## TOOLS:


[iFixit Opening Picks \(Set of 6\)](#) (1)  
[iOpener](#) (1)  
[Phillips #00 Screwdriver](#) (1)  
[Suction Handle](#) (1)  
[Spudger](#) (1)  
[Tweezers](#) (1)

## PARTS:

[iPad mini 3 Screen Digitizer](#) (1)  
[iPad mini 3 Home Button Gasket](#) (1)  
[iPad mini 3 Adhesive Strips](#) (1)

## Step 1 — iOpener Heating



 We recommend that you clean your microwave before proceeding, as any nasty gunk on the bottom may end up stuck to the iOpener.

- Place the iOpener in the center of the microwave.

 **For carousel microwaves: Make sure the plate spins freely. If your iOpener gets stuck, it may overheat and burn.**

## Step 2



- Heat the iOpener for **thirty seconds**.
- Throughout the repair procedure, as the iOpener cools, reheat it in the microwave for an additional thirty seconds at a time.

⚠ Be careful not to overheat the iOpener during the repair. Overheating may cause the iOpener to burst. Do not attempt to heat over 100°C (212°F).

⚠ Never touch the iOpener if it appears swollen.

⚠ If the iOpener is still too hot in the middle to touch, continue using it while waiting for it to cool down some more before reheating. A properly heated iOpener should stay warm for up to 10 minutes.

### Step 3



- Remove the iOpener from the microwave, holding it by one of the two flat ends to avoid the hot center.

⚠ The iOpener will be very hot, so be careful when handling it. Use an oven mitt if necessary.



## Step 4 — Alternate iOpener heating method



**i** If you don't have a microwave, follow this step to heat your iOpener in boiling water.

- Fill a pot or pan with enough water to fully submerge an iOpener.
- Heat the water to a boil. **Turn off the heat.**
- Place an iOpener into the hot water for 2-3 minutes. Make sure the iOpener is fully submerged in the water.
- Use tongs to extract the heated iOpener from the hot water.
- Thoroughly dry the iOpener with a towel.  
**⚠ The iOpener will be very hot, so be careful to hold it only by the end tabs.**
- Your iOpener is ready for use! If you need to reheat the iOpener, heat the water to a boil, turn off the heat, and place the iOpener in the water for 2-3 minutes.

## Step 5 — LCD Shield Plate



- If your display glass is cracked, keep further breakage contained and prevent bodily harm during your repair by taping the glass.
- Lay overlapping strips of clear packing tape over the iPad's display until the whole face is covered.
  - ① This will keep glass shards contained and provide structural integrity when prying and lifting the display.
- Do your best to follow the rest of the guide as described. However, once the glass is broken, it will likely continue to crack as you work, and you may need to use a metal prying tool to scoop the glass out.

**⚠ Wear safety glasses to protect your eyes, and be careful not to damage the LCD screen.**

## Step 6



- Handling it by the tab, place the heated iOpener on the side of the iPad to the left of the home button assembly.
- Let the iOpener sit for about five minutes to soften the adhesive beneath the glass.

## Step 7



- Carefully place a suction cup halfway up the heated side.
  - Be sure the cup is completely flat on the screen to get a tight seal.
- While holding the iPad down with one hand, pull up on the suction cup to slightly separate the front panel glass from the rear case.

⚠ Be careful to only lift the glass enough to insert an opening pick—any more and you risk cracking the glass.

## Step 8



- While holding the glass up with the suction cup, slide the point of an opening pick into the gap between the glass and body of the iPad.
  - ⚠ Don't insert the opening pick any deeper than the black bezel on the side of the display. Inserting the pick too far may damage the LCD.
- Pull the suction cup's plastic nub to release the vacuum seal and remove the suction cup from the display assembly.

## Step 9



- Reheat and reapply the iOpener.
  - ⚠ Be careful not to overheat the iOpener during the repair procedure. Always wait at least ten minutes before reheating the iOpener.
- Let it rest for a few minutes to reheat the left edge of the iPad.

## Step 10



- Place a second opening pick alongside the first and slide the pick down along the edge of the iPad, releasing the adhesive as you go.

⚠ Throughout the rest of the procedure, if you encounter significant resistance to sliding picks beneath the glass, stop and reheat the section you're working on. Forcing the picks risks cracking the glass.

## Step 11



- Continue moving the opening pick down the side of the display to release the adhesive.
- If the opening pick gets stuck in the adhesive, "roll" the pick along the side of the iPad, continuing to release the adhesive.



## Step 12



- Take the first pick you inserted and slide it up toward the top corner of the iPad.
- If you can see the tip of the opening pick through the front glass, don't panic—just pull the pick out a little bit. Most likely, everything will be fine, but try to avoid this as it may deposit adhesive on the front of the LCD that is difficult to clean off.

## Step 13



- Reheat the iOpener and place it on the top edge of the iPad, over the front-facing camera.

**⚠ Be careful not to overheat the iOpener during the repair procedure. Wait at least ten minutes before reheating the iOpener.**

- ① If you have a flexible iOpener, you can bend it to heat both the upper left corner and the upper edge at the same time.

## Step 14



- Slide the opening pick around the top left corner of the iPad to separate the adhesive.

## Step 15



- Slide the opening pick along the top edge of the iPad, stopping just before you reach the camera.

ⓘ The third image shows where the front-facing camera and housing are in the iPad.

⚠ Avoid sliding the opening pick over the front-facing camera, as you may smear adhesive onto the lens or damage the camera. The following steps will detail how to best avoid disturbing the front-facing camera.



## Step 16



- Pull the pick out slightly, and slide the very tip gently along the top of the front-facing camera section of the top edge.

## Step 17



- Leave the opening pick in the iPad slightly past the front-facing camera.
- Take a second pick and insert it to the left of the camera, where the first pick just was. Slide it back to the corner to completely cut any remaining adhesive.
- Leave the second pick in place to prevent the corner adhesive from re-sealing as it cools.

## Step 18



- Insert the previous pick deeper into the iPad and slide it away from the camera toward the corner.

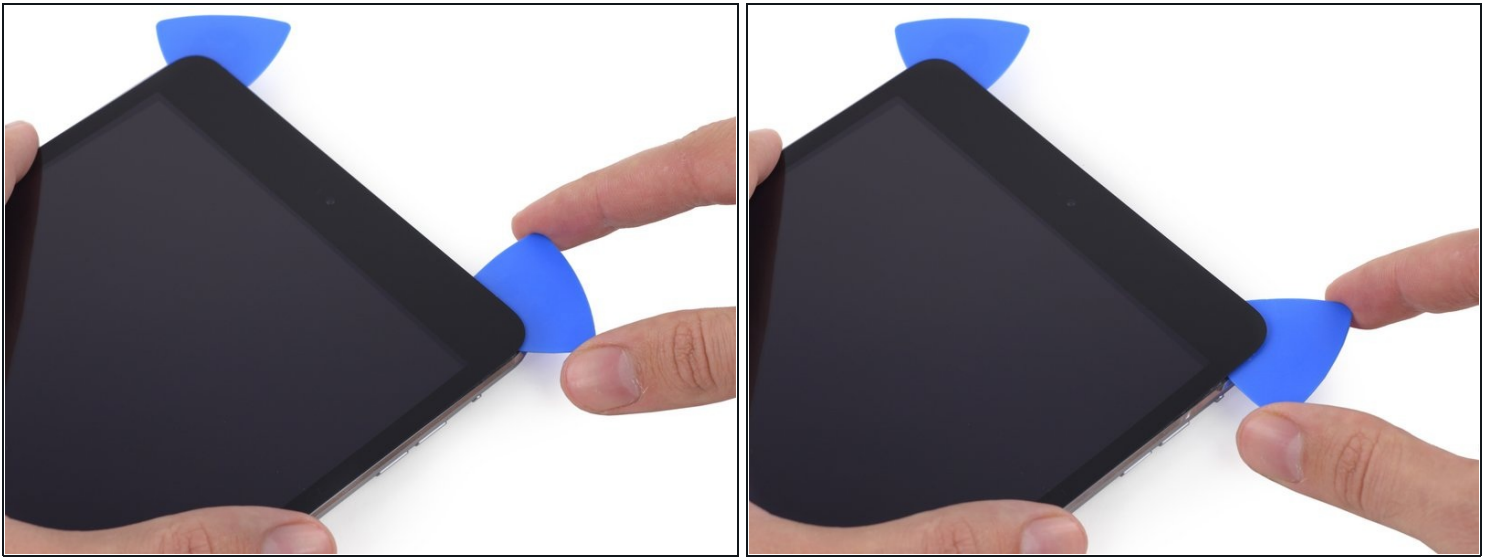
⚠ Be very careful of the [small antenna cable](#) near the upper-right corner. Only slide the pick away from the camera—while sliding it in the opposite direction you may accidentally tear the antenna cable.

## Step 19



- Leave the three picks in the corners of the iPad to prevent re-adhering of the front panel adhesive.
- Reheat the iOpener and place it on the remaining long side of the iPad—along the volume and lock buttons.

## Step 20



- Slide the top right opening pick around the corner to fully release the top edge of the glass.
- ① Leave this pick in place to keep the adhesive from re-sealing itself, and grab a new pick for the next step.

## Step 21



- Insert a new opening pick and slide it to the middle of the right edge of the iPad, releasing the adhesive as you go.

## Step 22



- Continue to slide the pick down the right edge of the iPad, releasing the adhesive.

## Step 23



- Leave the opening picks in place and reheat the iOpener.  
**⚠ Remember not to overheat the iOpener—no more than once every ten minutes.**
- Set the reheated iOpener on the home button end of the iPad and let it rest for a few minutes to soften the adhesive beneath the glass.

## Step 24



- Slide the lower left pick to the lower left corner to cut the adhesive on that corner.
- Leave the pick at the corner. Do not pry any farther, and do not remove the pick from the iPad.
- ⓘ There are quite a few things to avoid beneath the lower bezel, so study the third image closely:
  - Antennas
  - Home button cavity
  - Digitizer cable
- The following steps will direct you where to pry to avoid damage to these components. Only apply heat and pry where directed.

## Step 25



- ① Leave the pick from the last step in place to prevent the adhesive from re-sealing.
- With a new pick, slice gently over the left-hand antenna, stopping before the home button.
  - ⚠ Only slide the pick from the outer edge toward the center of the iPad. Do not move the pick back toward the outer edge, as moving in this direction may damage the antenna.
- ① If you need to slide the pick over the lower section more than once, remove it and re-insert at the outer edge, and slide inwards.
- Leave the pick in place before moving on.

## Step 26



- Insert the tip of one last pick next to the previous step's pick, and slide it beneath the home button.

⚠ Stop about an inch from the right-hand side to avoid cutting the digitizer cable.

- Insert the pick slightly deeper and work it back toward the home button.

⚠ Again, be sure to only slide the pick toward the center of the iPad when it is fully inserted; otherwise you may damage the antenna beneath the glass.

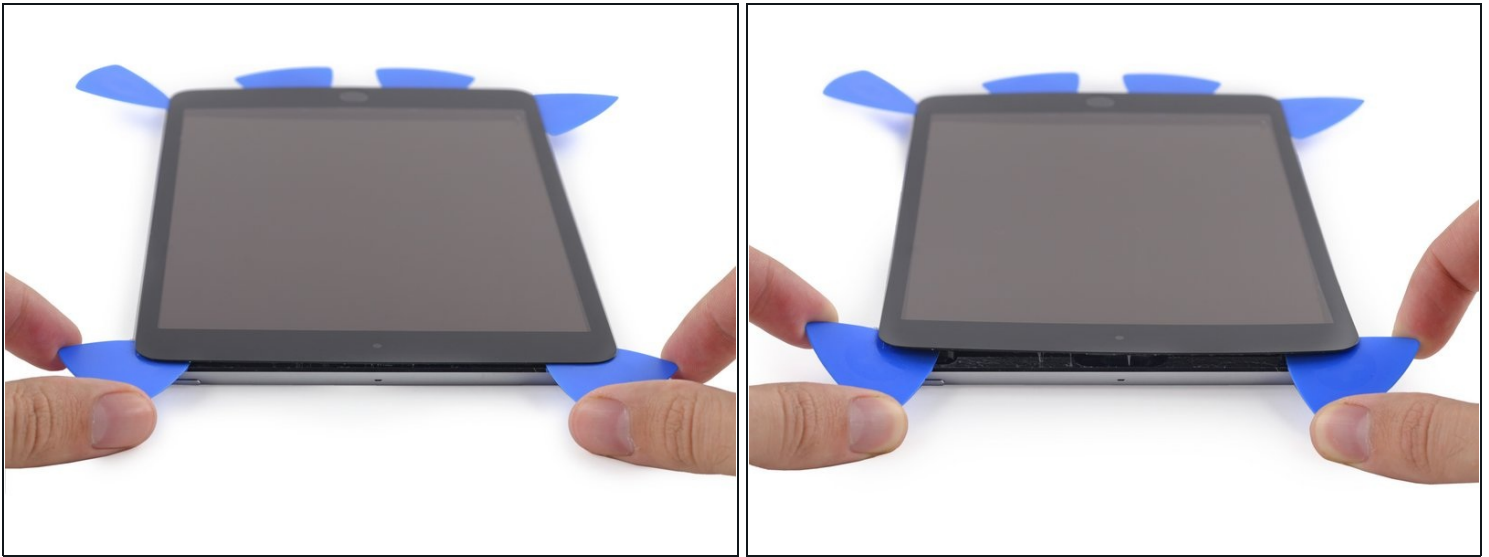
## Step 27



- Reheat and reapply the iOpener to the top bezel of the iPad.



## Step 28

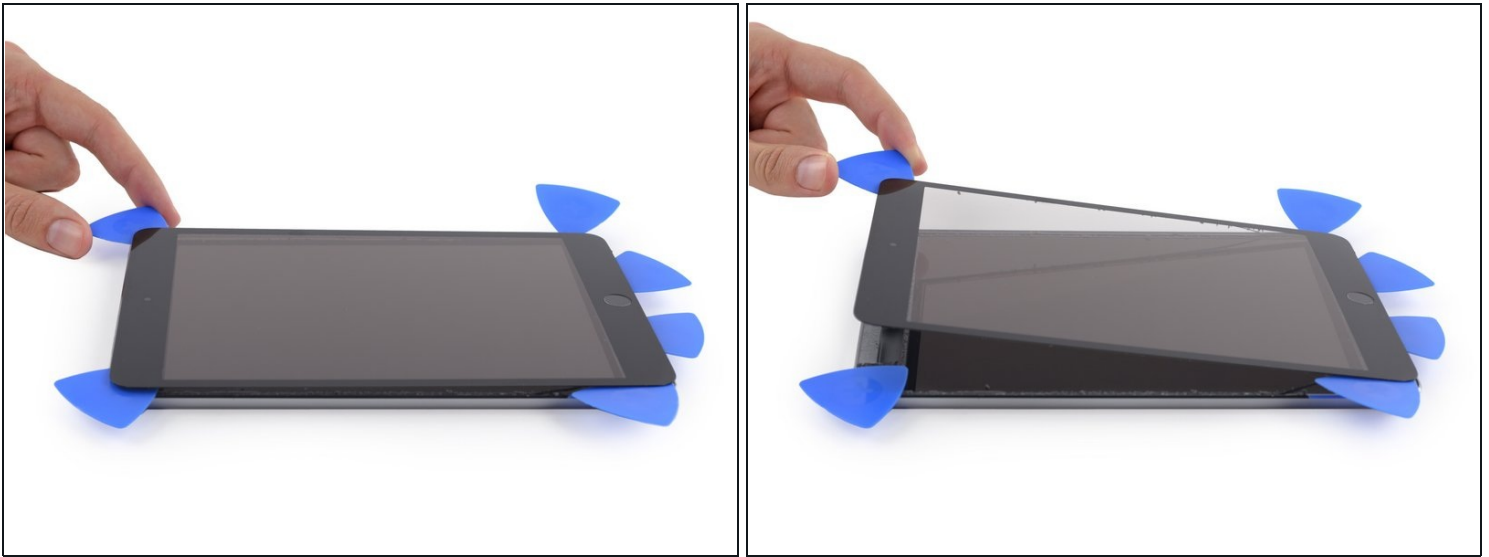


⚠ Be very careful with this step. Take your time and ensure the adhesive is hot and soft, and that you've been through all of the adhesive with an opening pick. Don't be afraid to stop and reheat.

- At the top of the iPad opposite the home button, you should have a pick lodged into each corner. Twist the picks to lift the glass slightly, separating the last of the adhesive along all four edges.

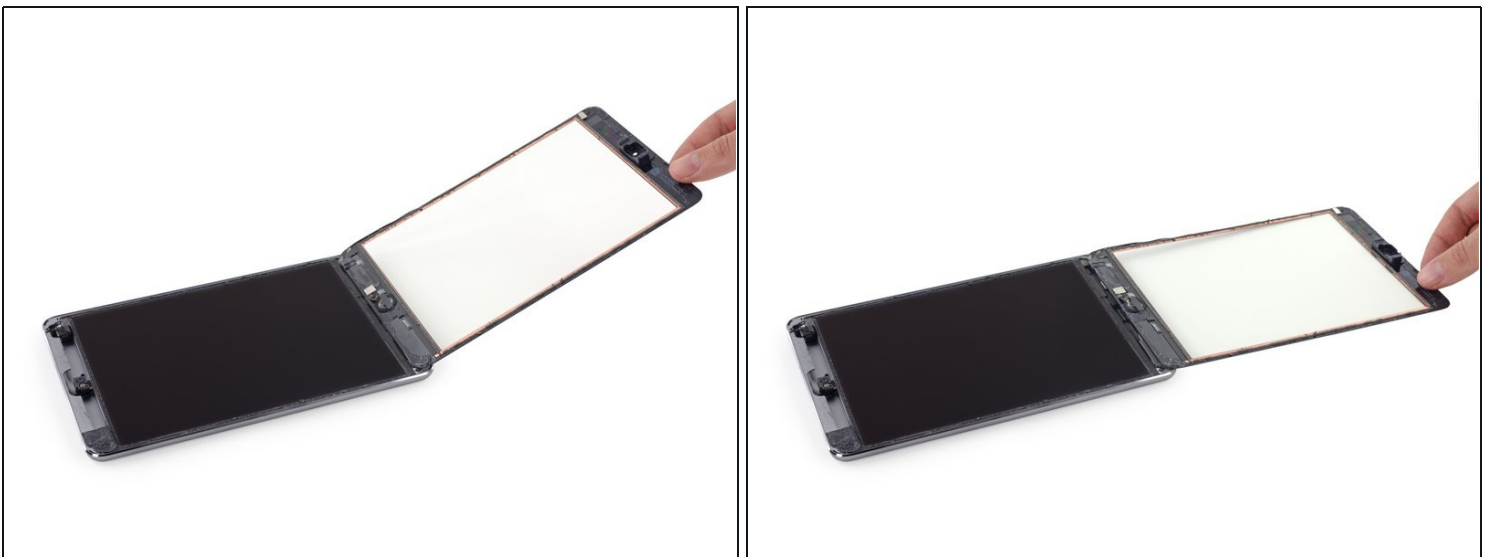
⚠ If you encounter a significant amount of resistance, stop twisting. Leave the picks in place, reheat, and reapply the iOpener to the problem areas, and run a pick through the sticking point one more time.

## Step 29



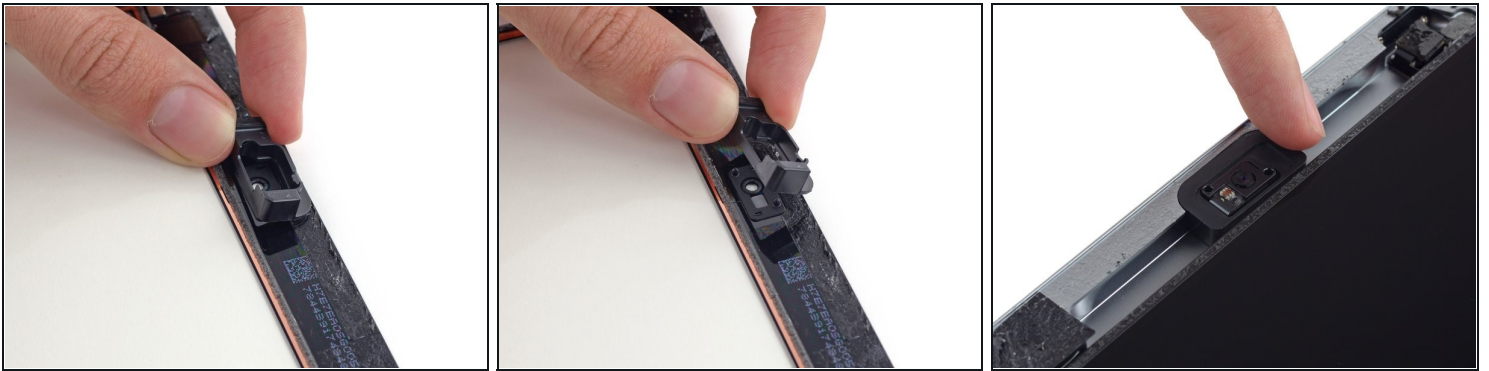
- Lift slowly and gently to further detach the adhesive along the lower edge.

## Step 30



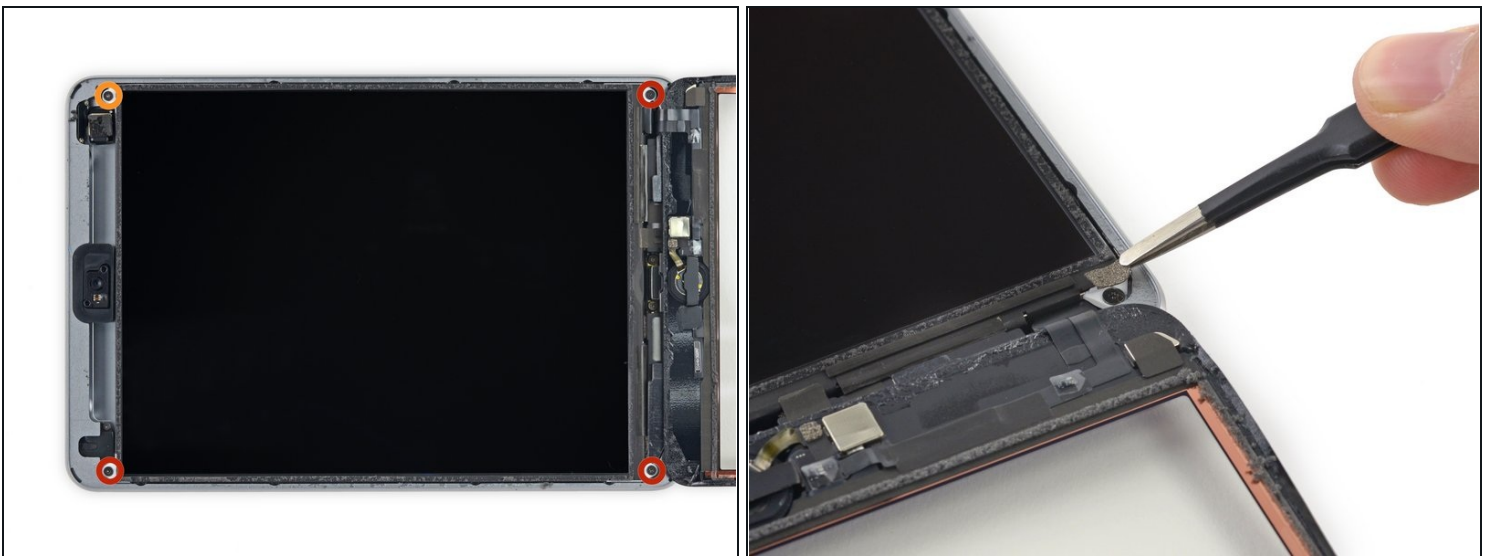
- Once all of the adhesive has been separated, open the front glass like a page in a book and rest it on your workspace.
- ☑ If you plan to reuse the front panel assembly, you will need to replace the display adhesive. Use our [display adhesive application guide](#) to reapply your display adhesive and reseal your device.

## Step 31



- ⓘ The front-facing camera housing may stick to the front panel; peel up the housing and place it back over the camera to protect it.
- Rock the camera housing up on one edge to free it from the adhesive and remove it from the front panel.
- Return the front-facing camera housing to its recess in the rear case.

## Step 32



- Remove the following Phillips #00 screws securing the LCD:
  - Three 3.3 mm screws
  - One 4.5 mm screw
- ⓘ If there is tape covering any LCD screws, peel it up with tweezers.

## Step 33



ⓘ Do not attempt to fully remove the LCD. It is still connected to the iPad by several cables at the home button end. Lift only from the front-facing camera end.

- Insert the flat end of a spudger under the LCD between it and the LCD shield plate and lift gently.

⚠ Be very careful not to get the spudger under the shield plate. It must be between the LCD and the shield.

⚠ Even bending the LCD slightly can permanently damage it, so be extremely careful as you lift.

## Step 34



ⓘ The LCD is secured by mild adhesive that should be loosened before you flip the LCD up from its shield plate.

- Insert the spudger between the LCD and LCD shield plate and slide it to the far edge of the iPad.

## Step 35



ⓘ Two wide strips of tape connect the LCD to the speakers.

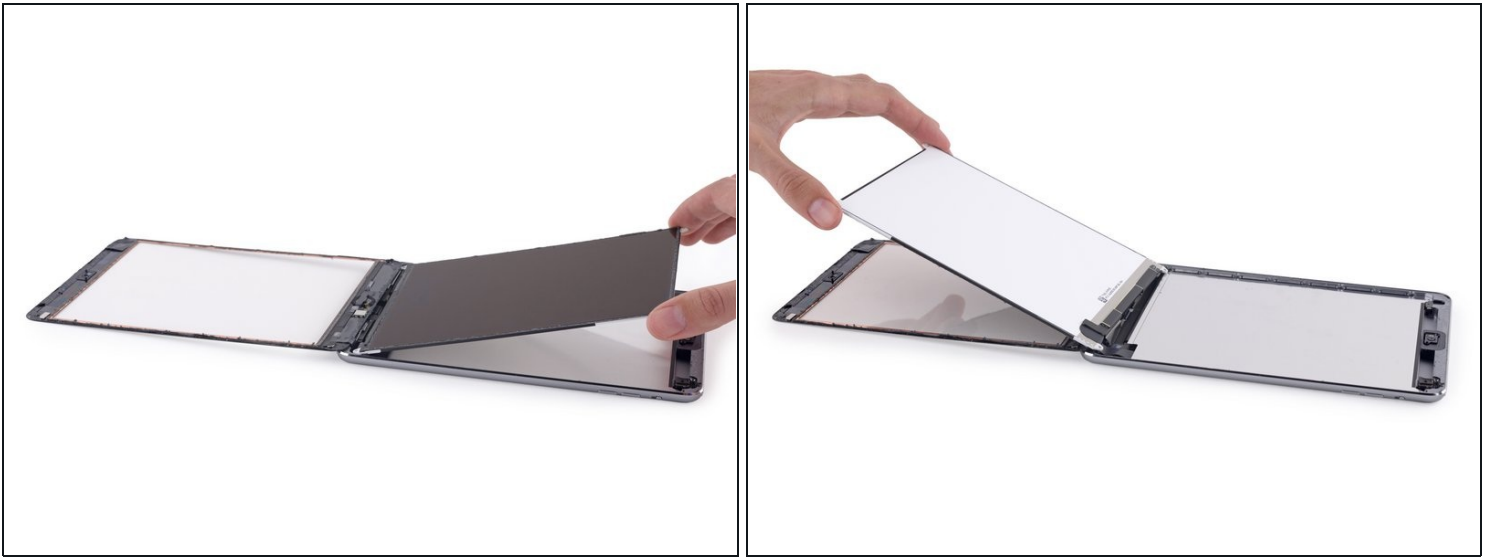
- Hold the LCD with one hand, and the rear body of the iPad with the other.

⚠ Do not attempt to fully remove the LCD from the iPad.

- Gently pull the LCD away from the speakers to separate the tape, being careful not to pull on the digitizer cable.



## Step 36



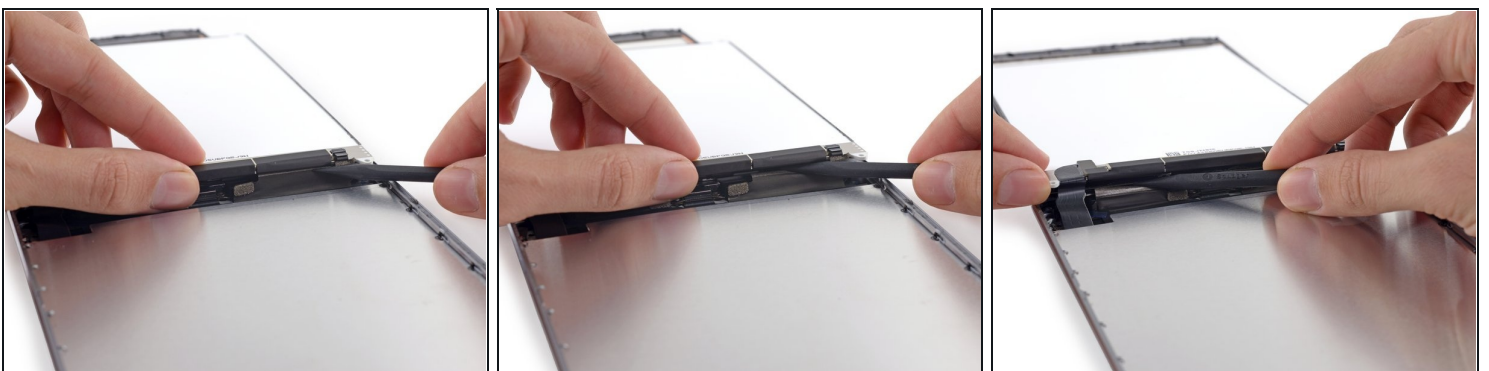
⚠ Do not attempt to fully remove the LCD. It is still connected to the iPad by several cables at the home button end. Lift only from the front-facing camera end.

- Flip the iPad LCD like a page in a book, lifting near the camera and turning it over the home button end of the rear case.

⚠ Be gentle and keep an eye on the LCD cables as you flip the display over.

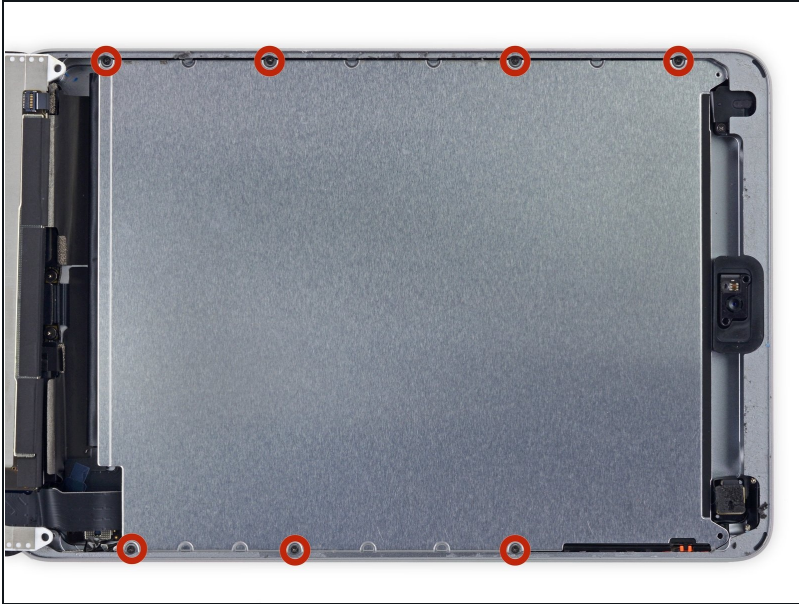
- Lay the LCD on the front panel glass to allow access to the display cables.

## Step 37



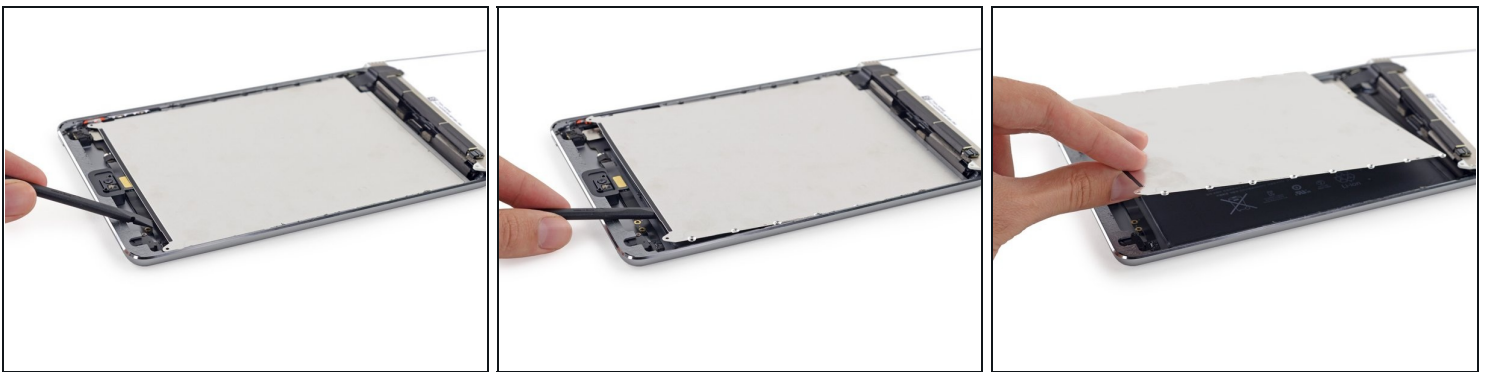
- Slide the tip of a spudger between the LCD and the adhesive tabs to free the display.
- Push gently between each of the two adhesive tabs; be careful not to damage any of the nearby cables.

## Step 38



- Remove the seven 1.8 mm Phillips #00 screws from the LCD shield plate.

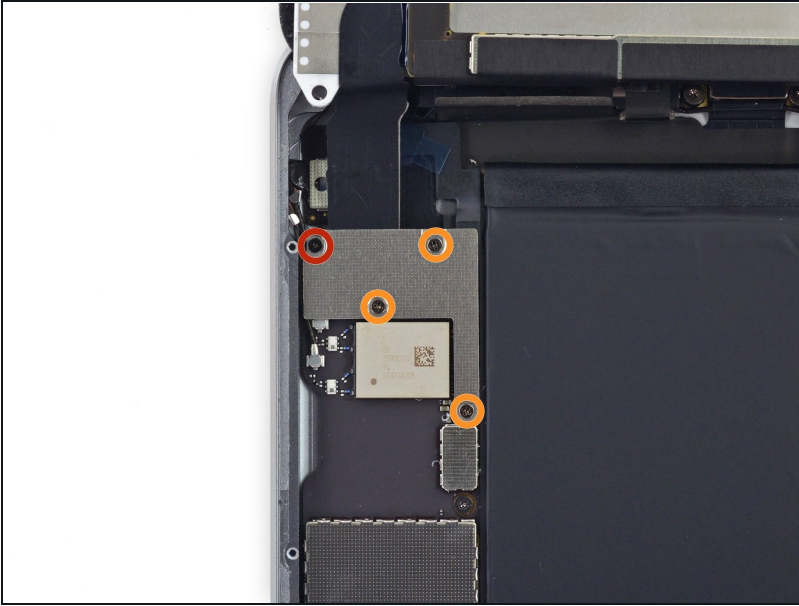
## Step 39



- Use the flat end of a spudger to pry the LCD shield plate up and out of the iPad.
- Remove the LCD shield plate.

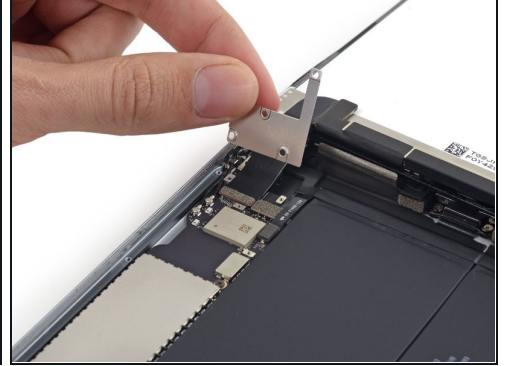


## Step 40 — LCD



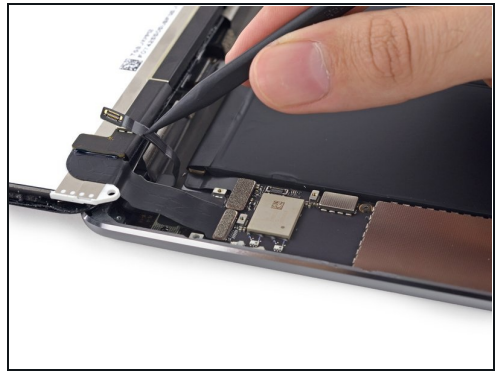
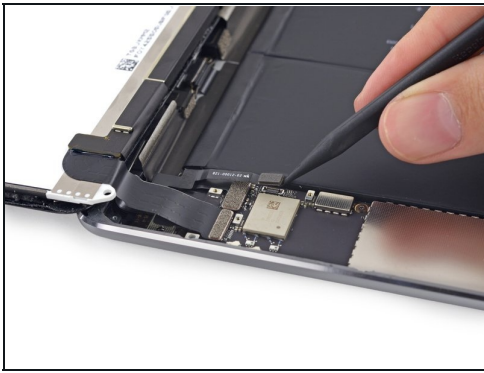
- Remove the following Phillips #00 screws from the display cable bracket:
  - One 2.8 mm screw
  - Three 1.4 mm screws

## Step 41



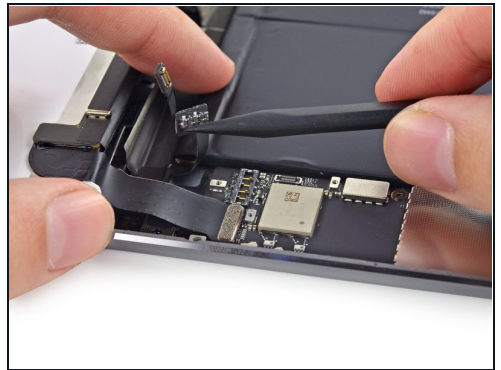
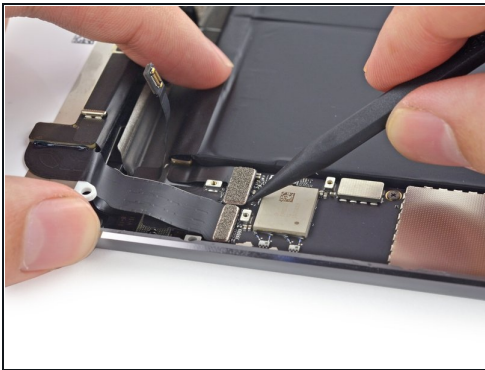
- Remove the display cable bracket from the iPad.

## Step 42



- Use the tip of a spudger to lift the home button cable up off of its socket on the logic board.
- Fold the home button ribbon cable out of the way.

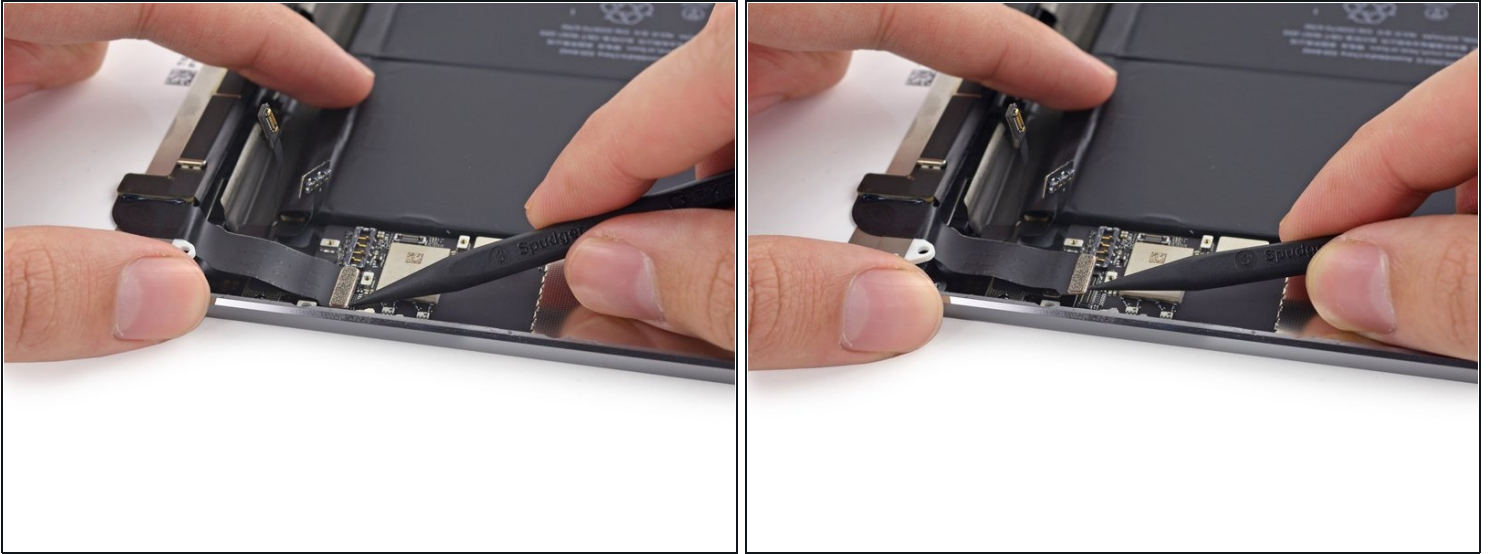
## Step 43



- Use the tip of a spudger to gently lift the battery connector up off its socket on the logic board.

⚠ Be very careful to only pry up on the battery connector and not on the socket itself. If you pry up on the logic board socket, you may break the connector entirely.

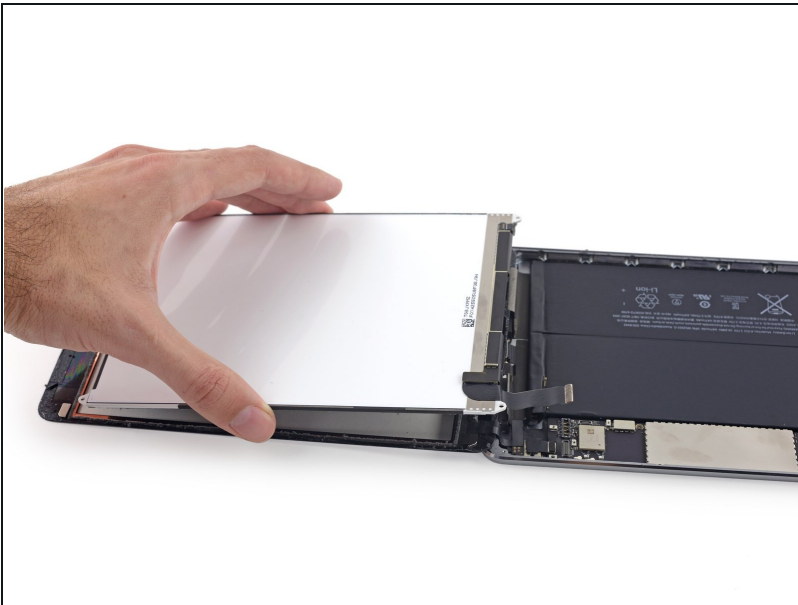
## Step 44



- Use the tip of a spudger to lift the LCD connector up off its socket on the logic board.

⚠ Do not pry against the large IC next to the connector, or you may break it. Gently pry from the side of the connector as shown.

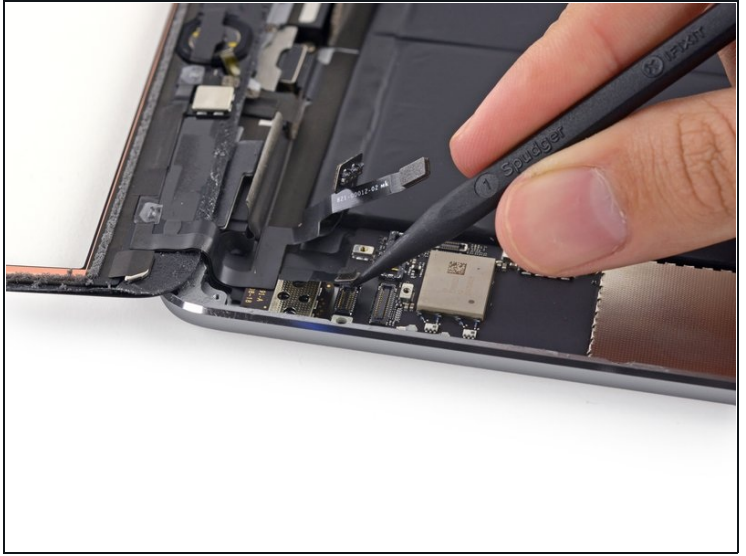
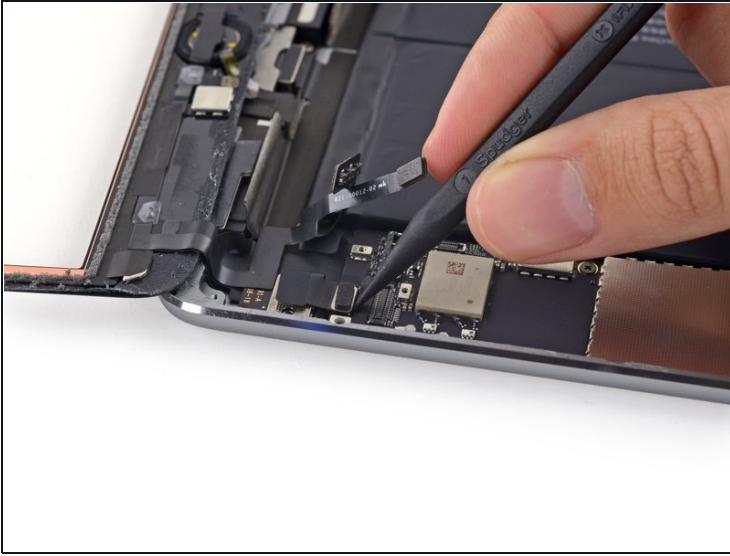
## Step 45



- Lift and remove the LCD from the iPad Mini 3.

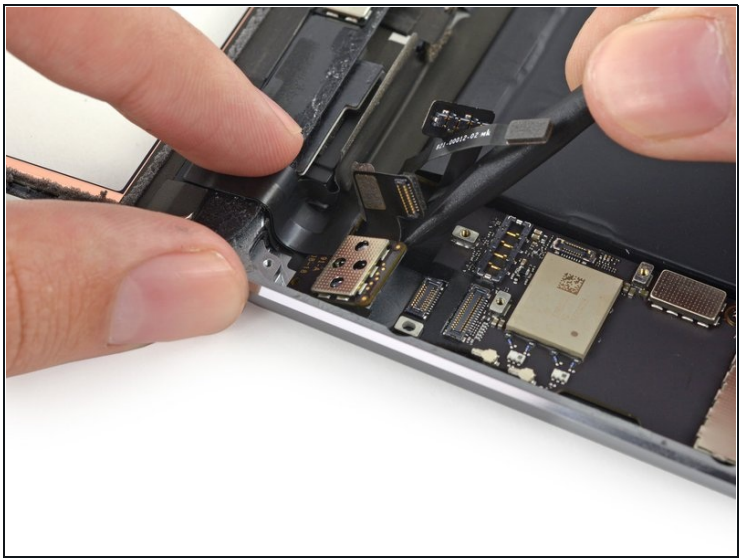
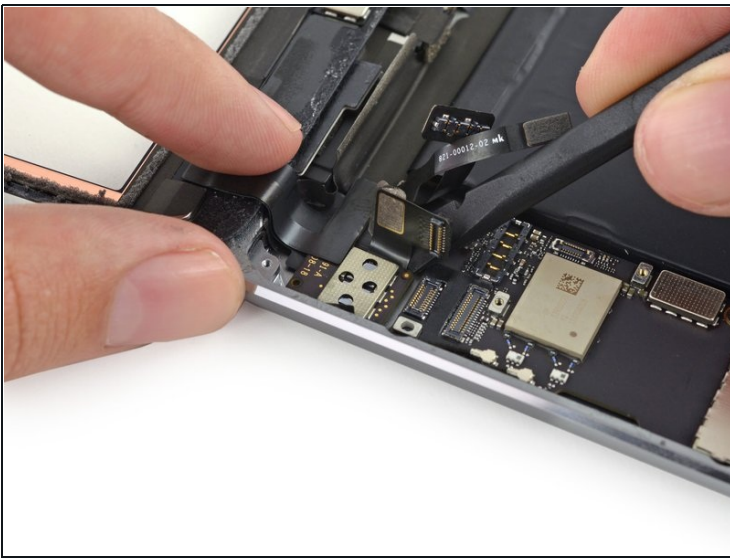


## Step 46 — Front Panel Assembly



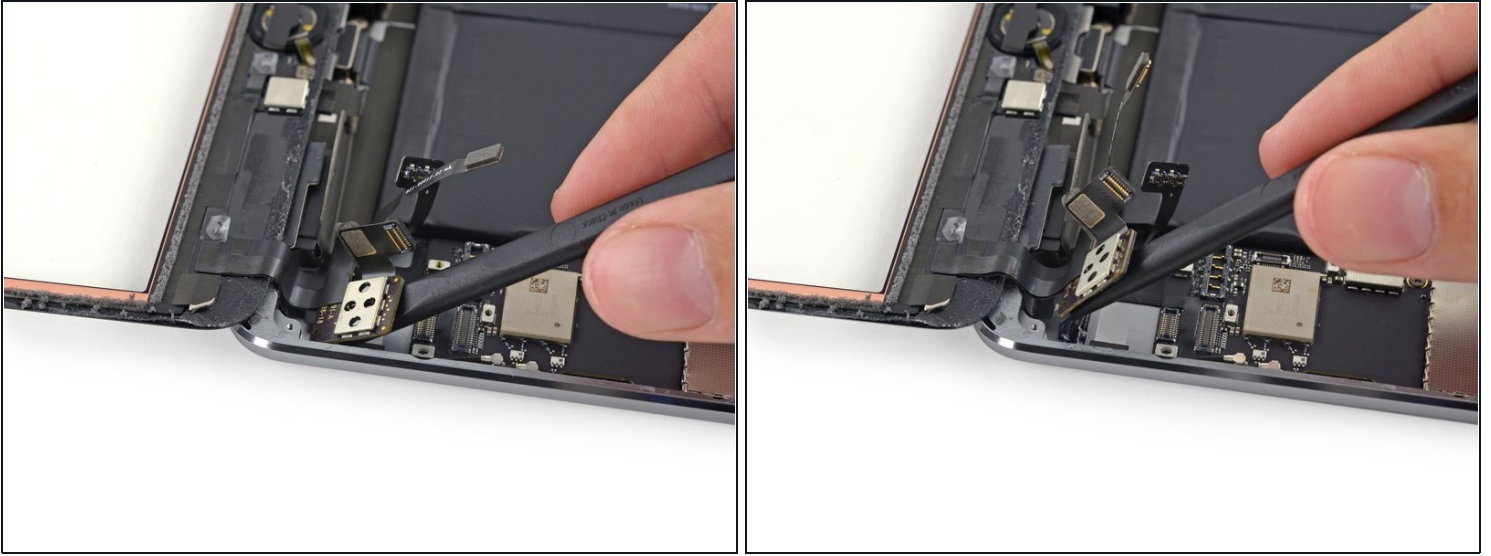
- Use the tip of a spudger to lift the digitizer cable connector straight up off of its socket.

## Step 47



- Slide the flat end of a spudger under the battery side of the digitizer board to begin separating it from the rear case.

## Step 48



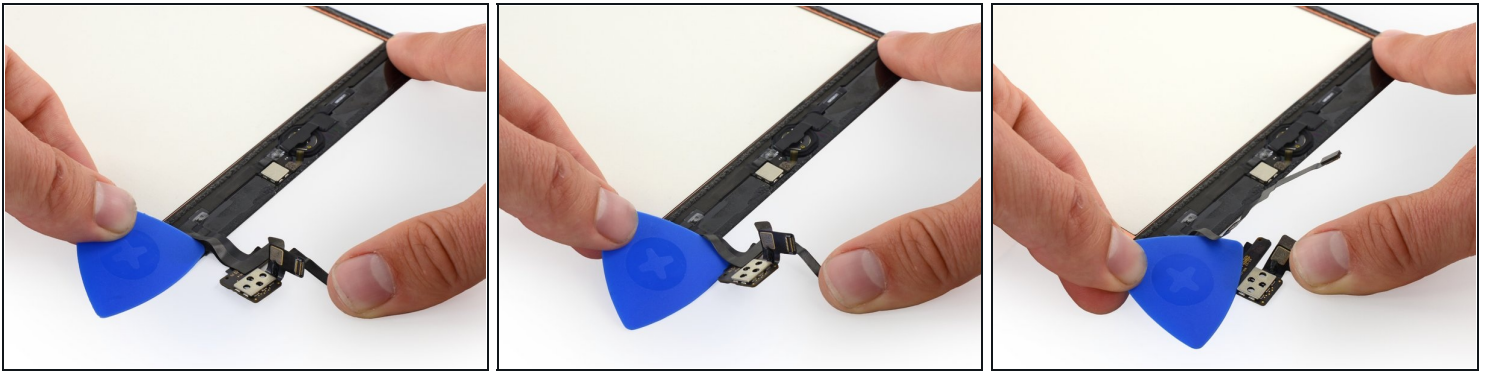
- Lift the digitizer board up to free the last of the adhesive.

## Step 49



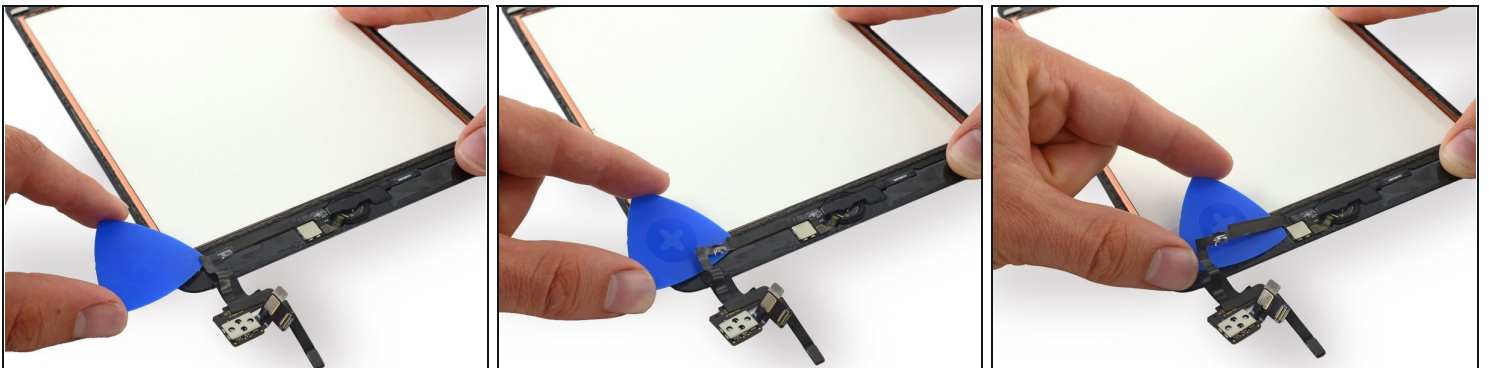
- Lift and remove the front panel assembly from the iPad.

## Step 50 — Home Button Assembly



- Use an opening pick to break up the adhesive holding the home button ribbon cable to the digitizer cable.

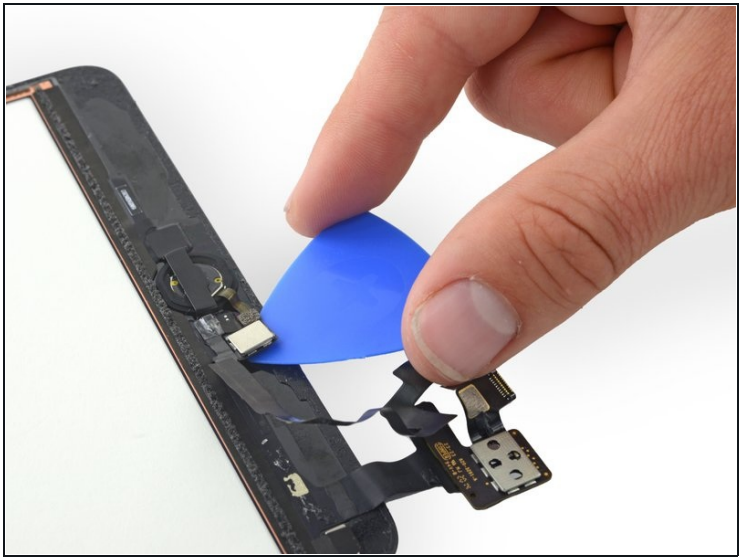
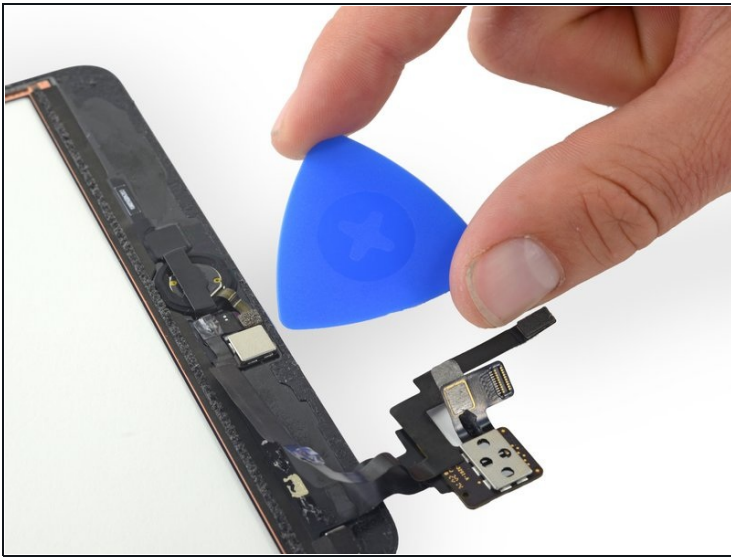
## Step 51



- Insert an opening pick between the home button ribbon cable and the digitizer.
- Slide the pick along the front panel, towards the home button, to continue separating the home button ribbon cable from the front panel.

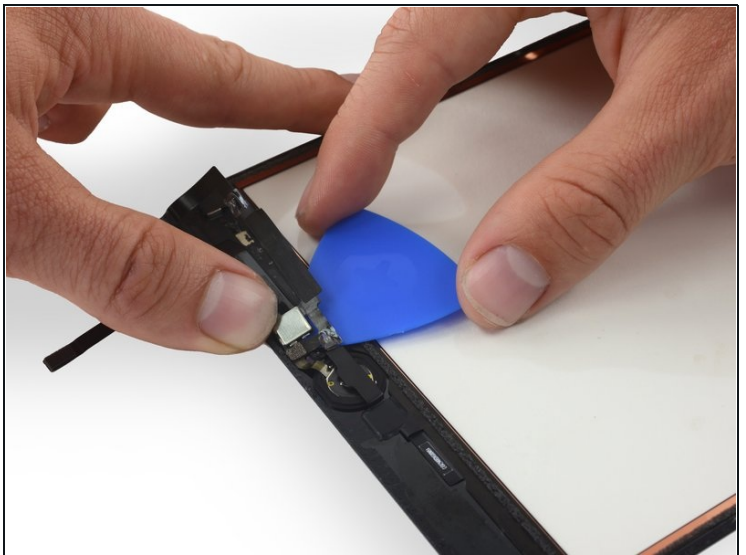
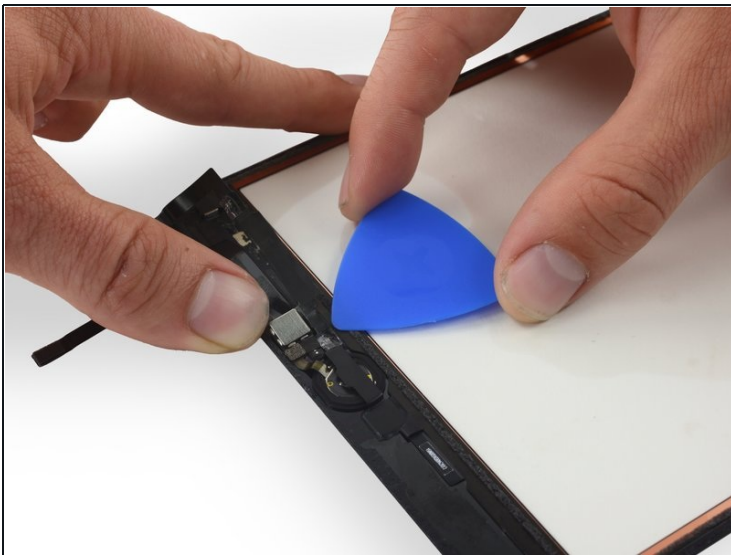


## Step 52



- Use an opening pick to lift the home button control hardware off the back of the front panel.

## Step 53

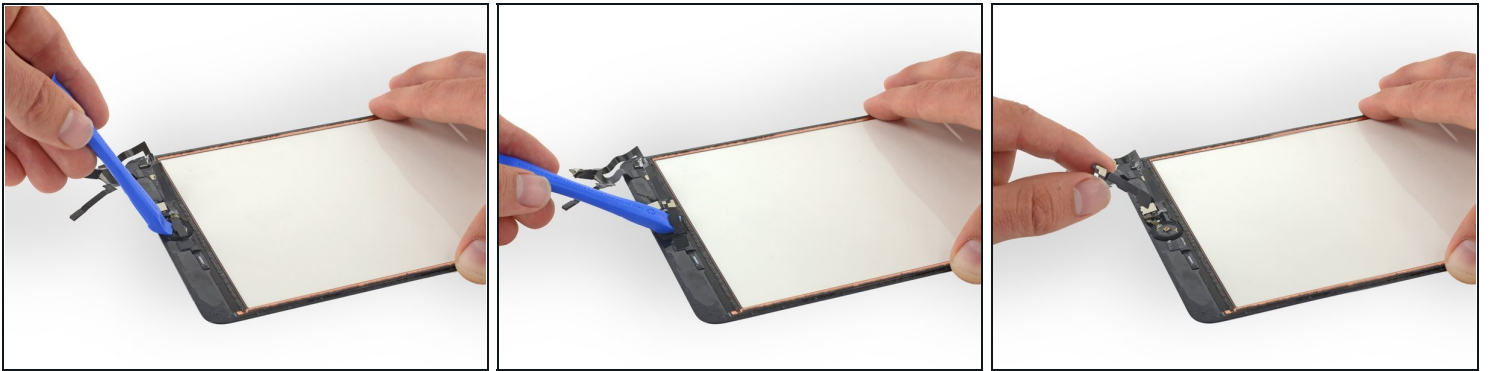


- Peel up the last of the tape holding the home button ribbon cable in place by inserting an opening pick between the cable and the digitizer.
- Continue sliding the pick underneath the cable until it is wholly separated from the front panel

**⚠ Do not attempt to remove the home button yet. It is still held in place by a strongly adhered bracket and delicate gasket.**



## Step 54



- Use a plastic opening tool to pry the home button bracket off the back of the digitizer.
- Remove the home button bracket.
  - 🔧 When reapplying the home button bracket, use a dab of adhesive or high-bond double sided tape to ensure adequate adhesion.

## Step 55



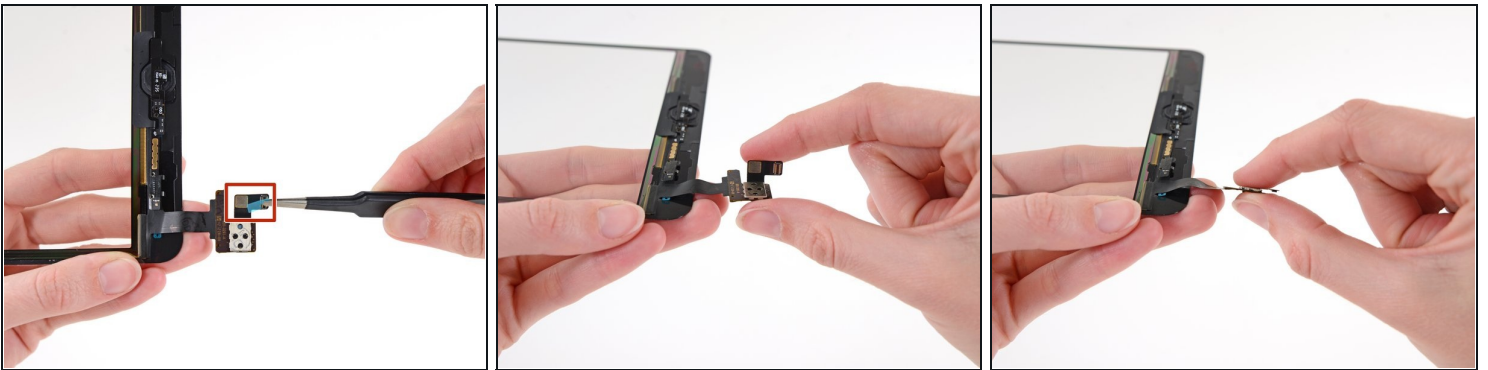
- Prepare an iOpener and lay it over the lower edge of the digitizer to loosen the adhesive holding the home button gasket in place.
  - ⓘ Wait about two minutes before moving on to ensure the adhesive has adequate time to soften.
- Flip the digitizer panel over and gently push the home button up out of its slot in the front panel.
  - ⚠ Push slowly and apply just enough pressure to slowly separate the gasket from the glass—if you push too hard the gasket will rip.

## Step 56



- Remove the home button assembly.

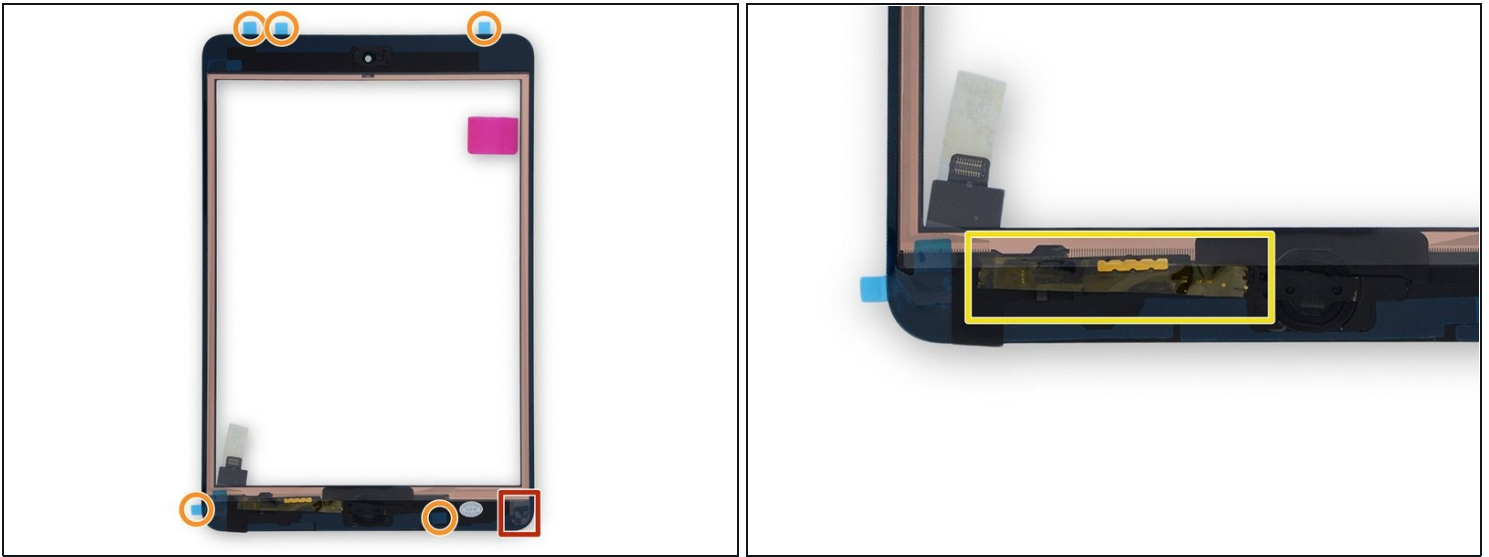
## Step 57 — Adhere the digitizer cable



**i** Your replacement panel may come with this cable pre-adhered.

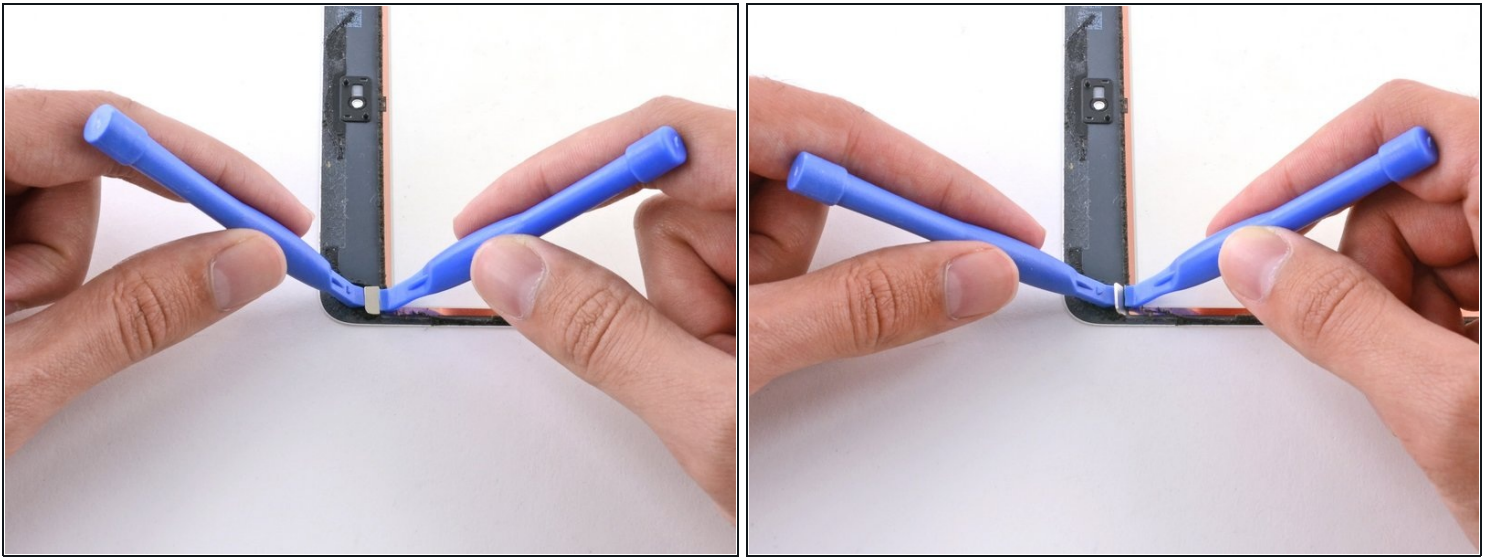
- On the replacement front panel, remove the small piece of adhesive backing from the digitizer cable.
- Fold the digitizer cable back over onto itself and press firmly to secure the adhesive.

## Step 58 — Front panel preparation



- ✦ This is a good time to power on your iPad and test all functions before you seal the display in place. Be sure to power your iPad back down completely before you continue.
- ⓘ If you're installing a new front panel assembly, it **may** need the following preparation:
  - Peel the large clear plastic liner off of the inside of the glass.
  - Peel any blue plastic backings covering the adhesive around the perimeter of the front panel assembly.
    - ⚠ Once removed, the adhesive strips will be exposed. Don't remove these backings until you're ready to install the front panel assembly.
  - **Don't remove any copper coverings from the outlined region**, such as yellow kapton tape or black electrical tape.
- Ensure the glass panel is free of fingerprints and grime before installing it on your device.

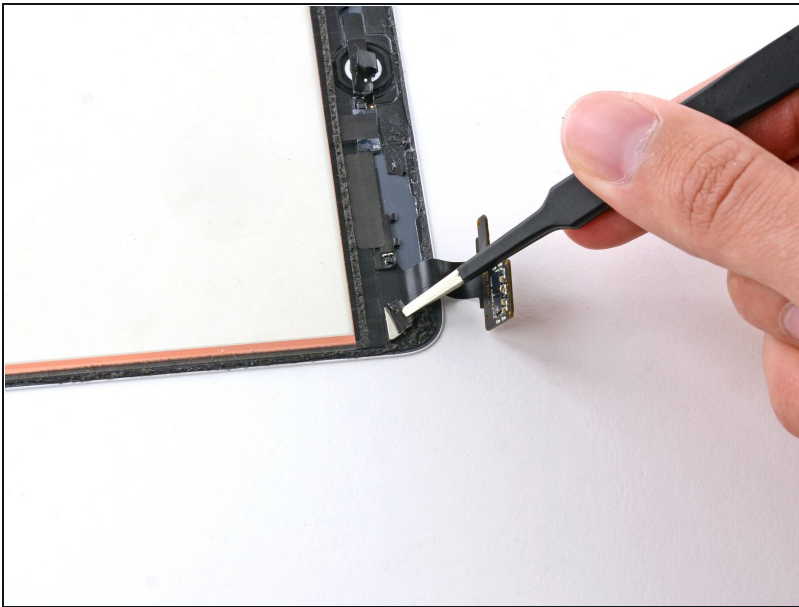
## Step 59 — Transfer the smart cover magnets



- ✦ Before you install your new front panel, you'll need to transfer the smart cover magnets on your **OLD** front panel to your new front panel.
- Place the edge of a plastic opening tool on each side of the magnet near the top left corner of the front panel assembly.
- Carefully wedge the edge of the right plastic opening tool underneath the magnet.
- ⓘ Steadily hold the right plastic opening tool in place.
- Wedge the left plastic opening tool underneath the magnet and simultaneously pry and push it towards the right plastic opening tool.

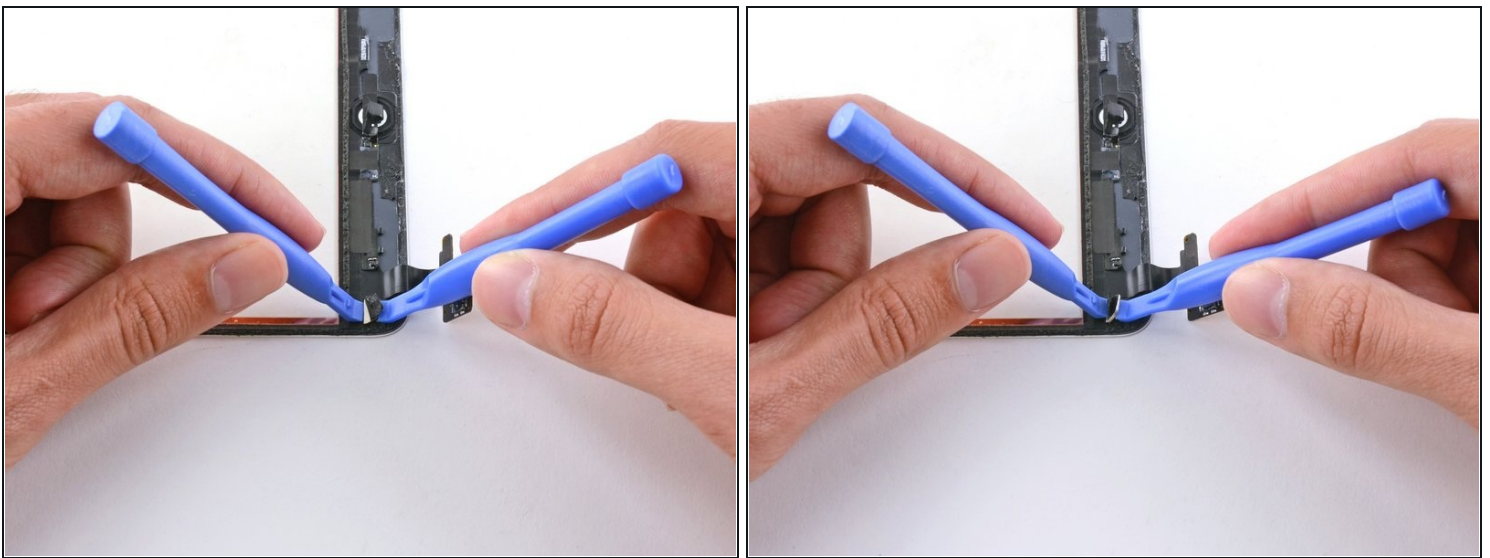
⚠ This will require some force as the smart cover magnet is held in place with strong adhesive.

## Step 60



- ⓘ If necessary, use a pair of tweezers to partially peel back the piece of tape covering the smart cover magnet near the lower left corner of the front panel assembly.

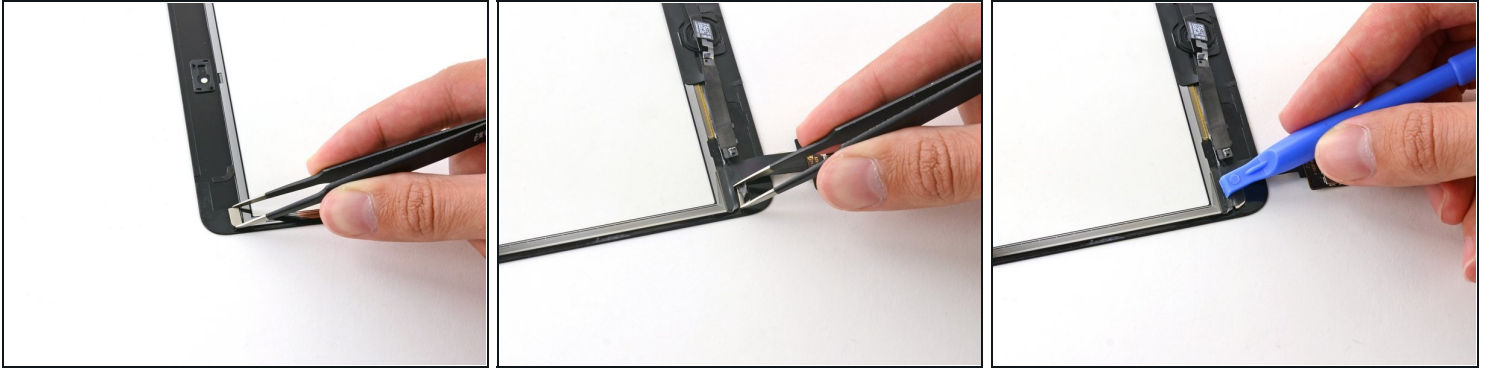
## Step 61



- Use the previously described procedure to remove the smart cover magnet near the bottom left corner of the front panel assembly.



## Step 62



ⓘ In this step you will be transferring the smart cover magnets to the **NEW** front panel assembly.

- Use a pair of tweezers to carefully place the upper left smart cover magnet in place.
- Repeat the procedure with the bottom left smart cover magnet.

☑ If necessary, use the edge of a plastic opening tool to flatten the piece of tape adhered to the bottom left smart cover magnet.

---

To reassemble your device, follow these instructions in reverse order.