



Dell Inspiron 8600 Top Case Replacement

Follow this guide to replace the top case of...

Written By: Perry



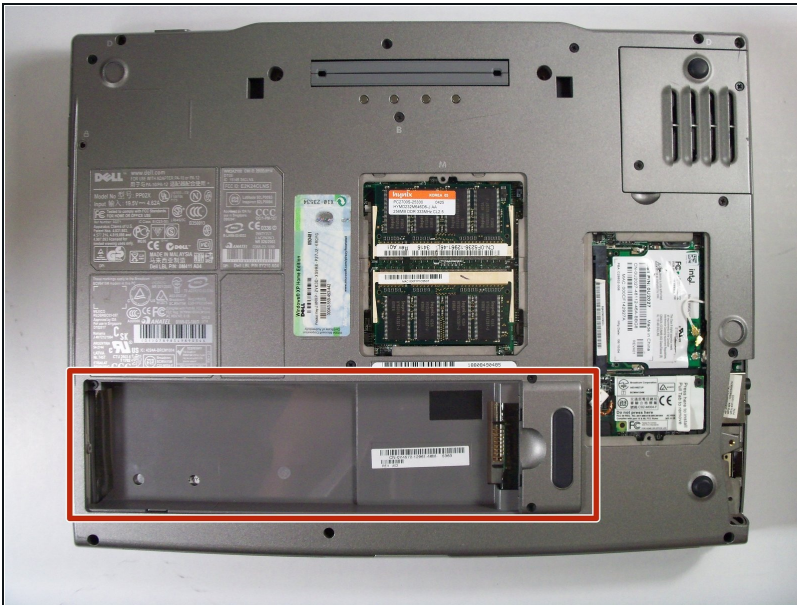
INTRODUCTION

Follow this guide to replace the top case of the Dell Inspiron 8600.


TOOLS:

Phillips #1 Screwdriver (1)

Step 1 — Battery



- Remove the battery from the bottom left of the laptop as shown.

 **Remove the battery before operating on the computer to avoid electrocution.**

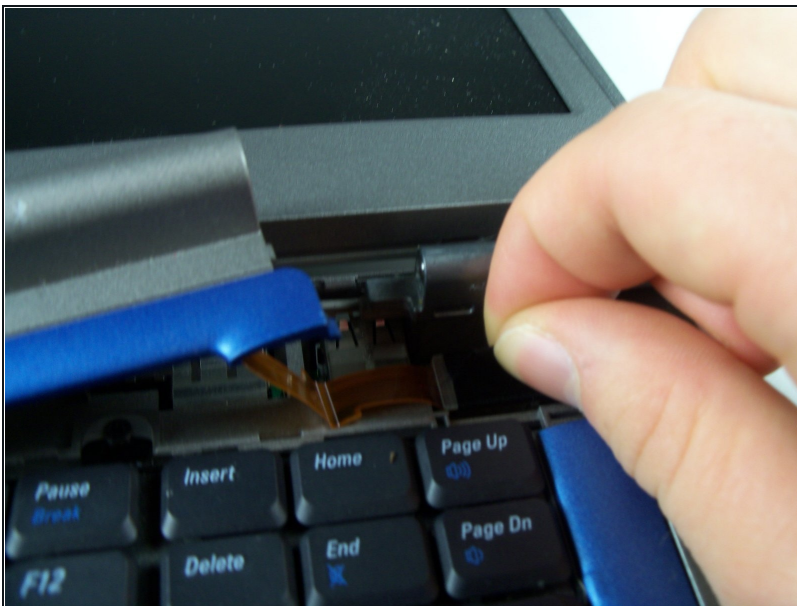
Step 2 — Power Button



- Locate the small opening at the upper left of the top blue panel which houses the power button.
- Use a spudger to lift up and remove the blue panel.

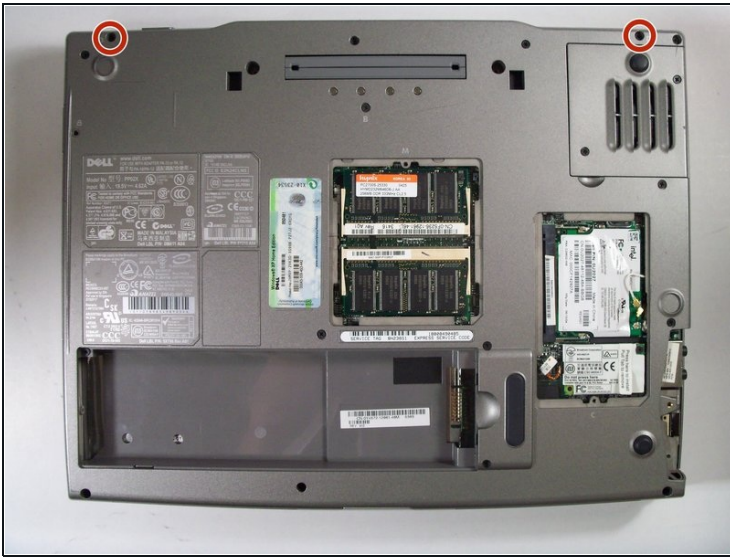
⚠ Caution: The hinge cover is still connected to the interior of the computer by a small black tab.

Step 3



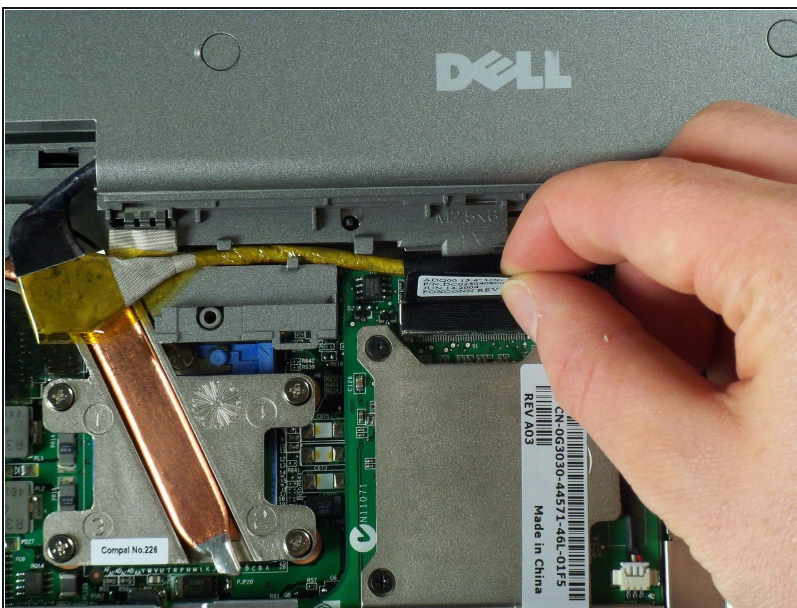
- Locate the black tab at the upper right corner of the keyboard, and gently pull the black tab to the left to disconnect the hinge cover.
- You should now be able to completely remove the hinge cover.

Step 4 — Display Module



- Flip the laptop over and remove the indicated screws.
- Flip the laptop back over.
- Find the two places where the display module is attached to the base of the computer.

Step 5



- Disconnect the video card from the display module by gently lifting upwards on the black tab.

Step 6



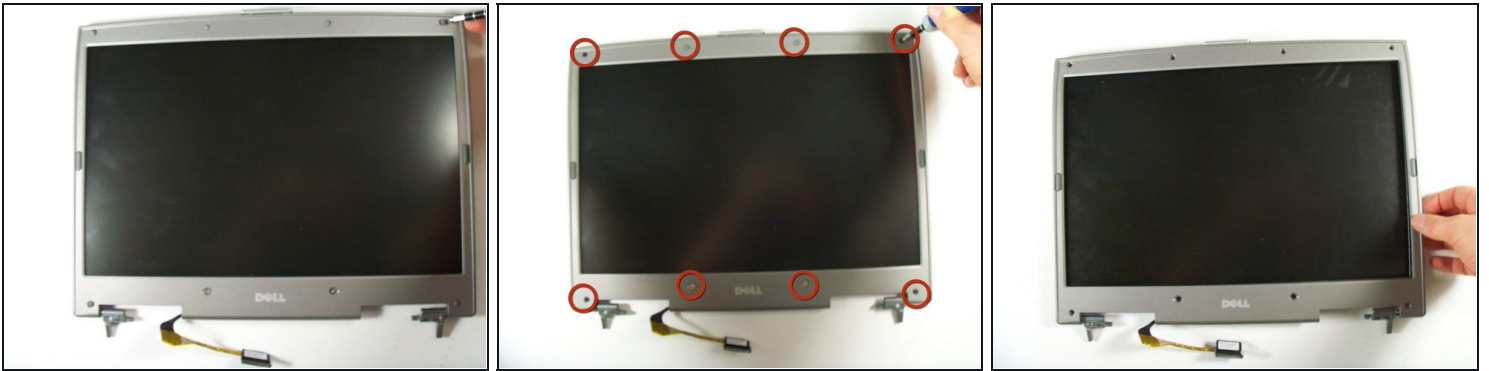
- Lift the display module directly upwards from the base of the computer.

Step 7



- Now remove the display module.

Step 8 — Top Case



- First, remove all tabs using a flat head/ finger.
- Next, remove all screws using a #1 Philips screwdriver.

⚠ Pull apart top case from the lower case. It will be quite difficult to separate.

Step 9



- Remove all screws on the top of the lcd
- There all several screw on each side of the LCD. Remove all.

Step 10



- LCD should remove smoothly.
- The top case will be what remains.

To reassemble your device, follow these instructions in reverse order.