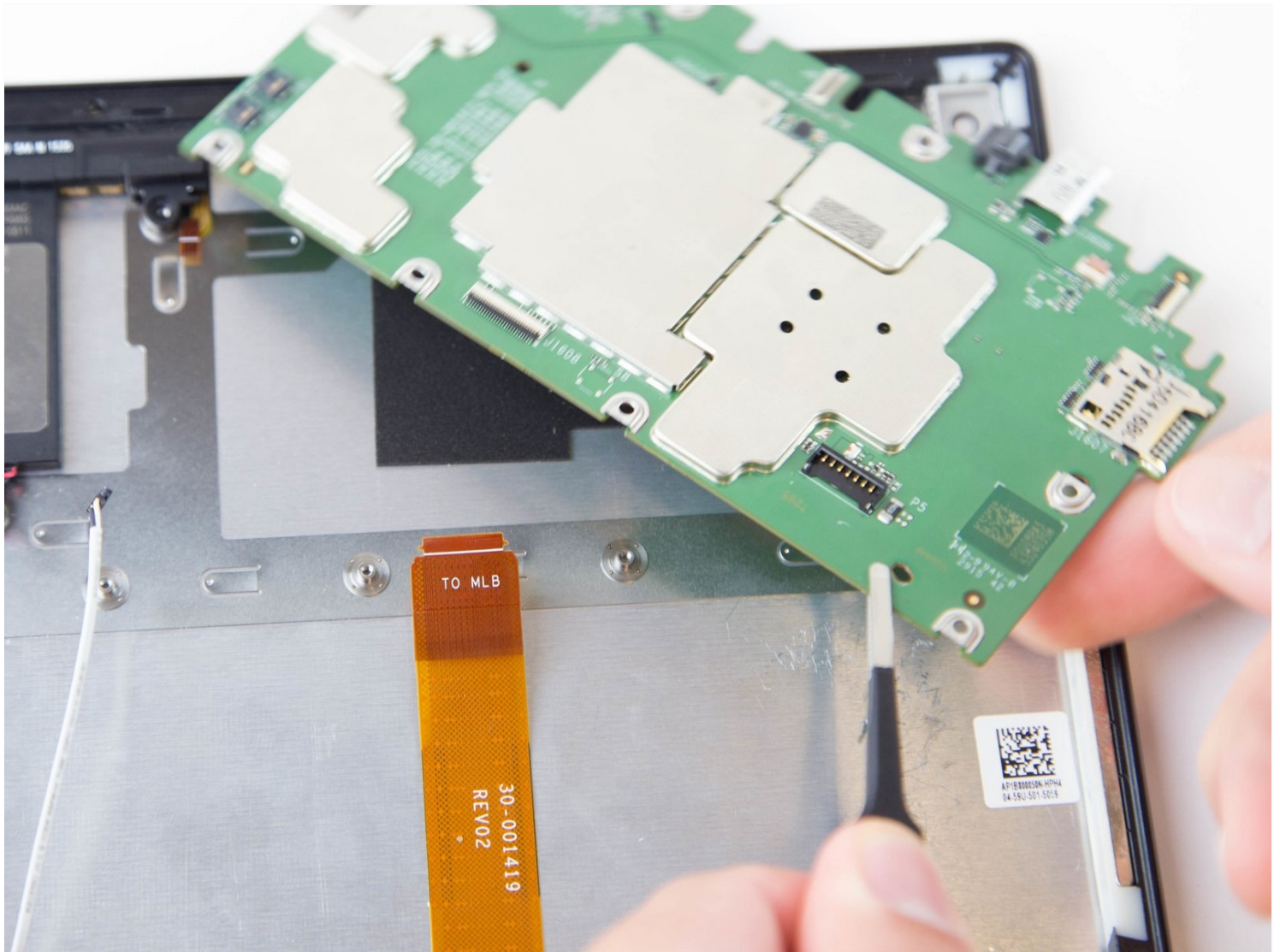




Amazon Fire HD 10 Motherboard Replacement

Use this guide to replace the motherboard in...

Written By: Jaie Hillery



INTRODUCTION

Use this guide to replace the motherboard in your Amazon Fire HD 10.

TOOLS:

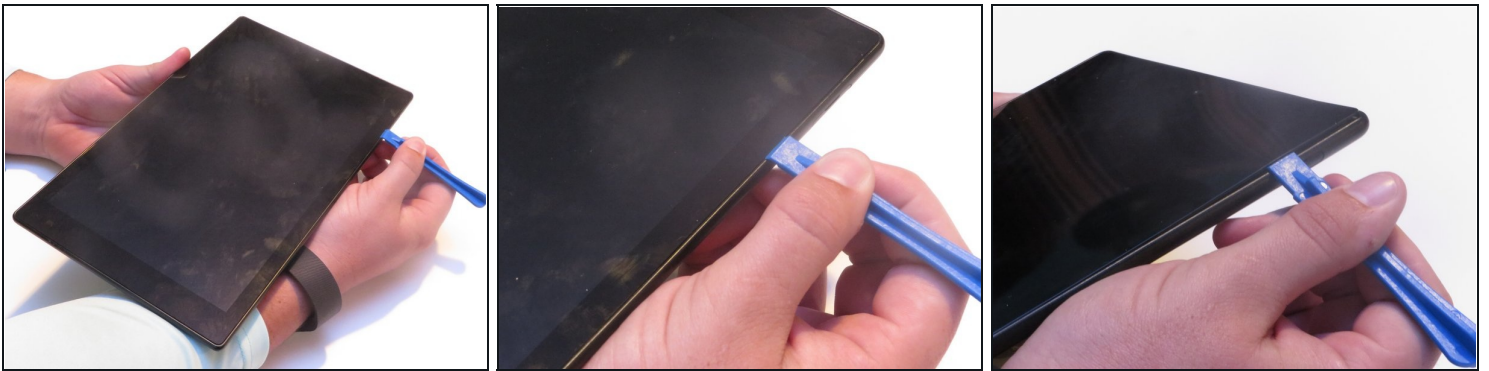
[iFixit Opening Tool](#) (1)

[T5 Torx Screwdriver](#) (1)

[Tweezers](#) (1)

[Spudger](#) (1)

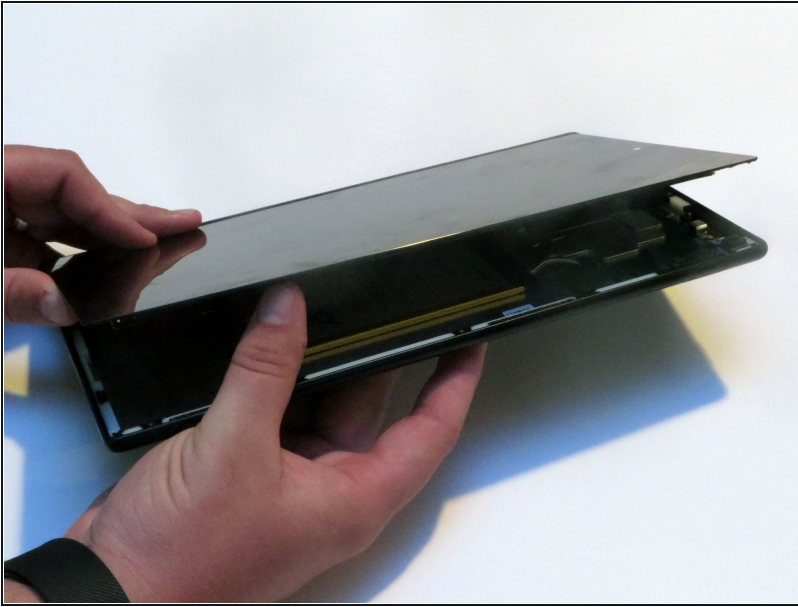
Step 1 — Screen



 **Avoid prying near bottom right hand side due to LCD Connector**

- Use a plastic opening tool to pry the screen up in the right hand corner.

Step 2



⚠ Do not completely remove the screen yet as there is a ZIF connector connected.

- Lift the screen and digitizer from the case.
- ⓘ You may need to use some force due to the glue.

Step 3



ⓘ Be mindful of the ZIF connector.

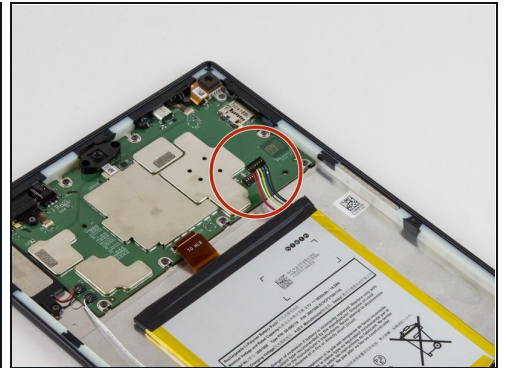
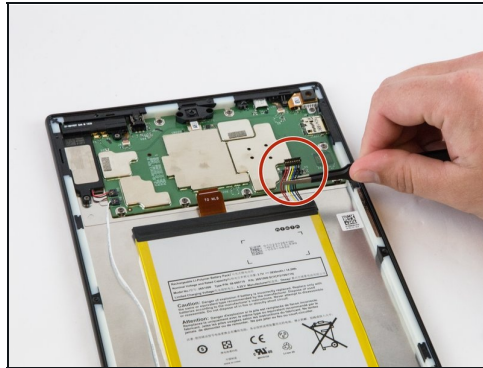
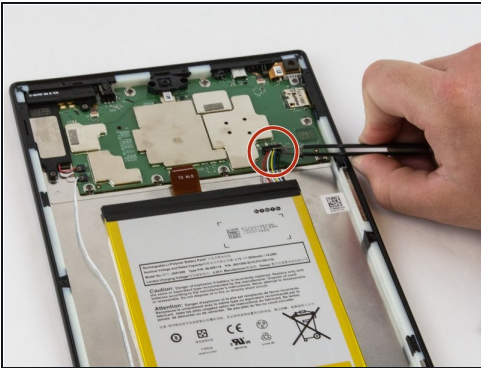
- Disconnect the ribbon connector from the digitizer side using your hands or the plastic opening tool.

Step 4



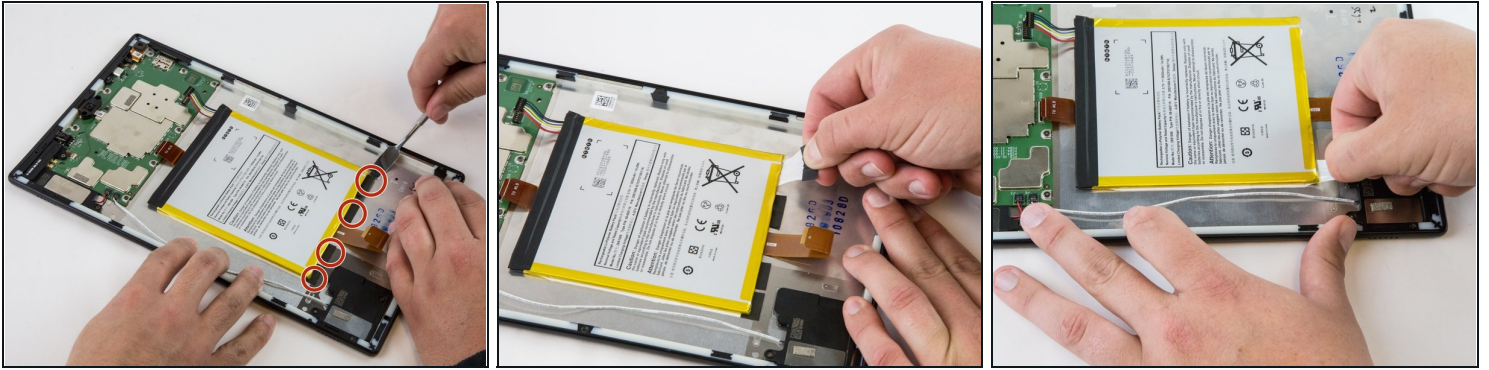
- Remove the screen and digitizer from the case completely.

Step 5 — Battery



- Locate the power cable that links the battery to the motherboard.
 - Carefully unplug the battery power cable to disconnect the battery from the motherboard.
- ① The third image shows what it should look like with the battery power cable is disconnected.

Step 6

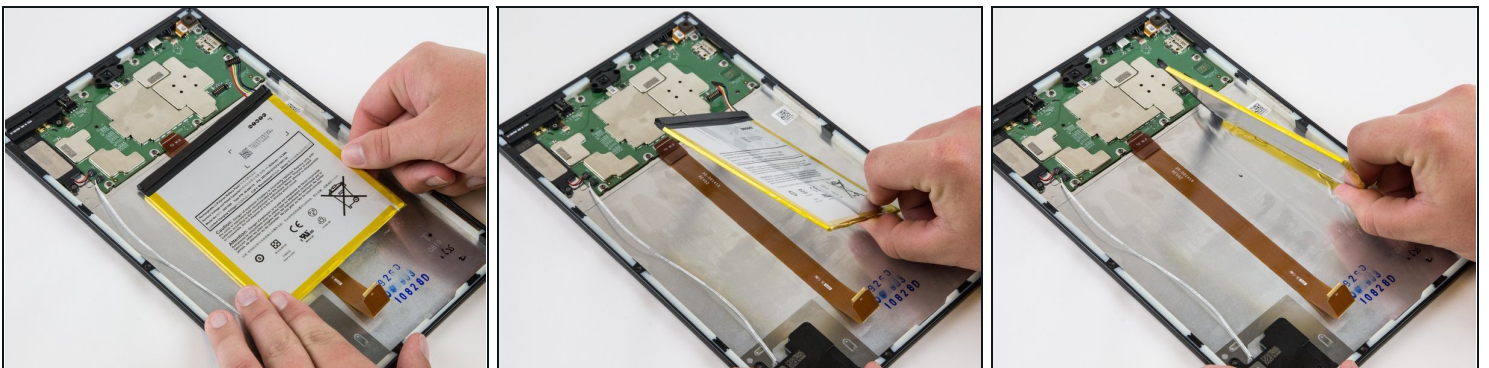


- Begin by locating the double sided pull tape locations.

⚠ Do not lift on the battery when doing the following step. You will bend it. It is very pliable.

- Pull the black soft tabs to release the tape's adhesion.
- ⓘ Make sure you pull the tabs slowly and continuously away from the case until the adhesive is completely out.
- Do this to all 4 tabs until the battery is completely free of adhesion to the device's backing.

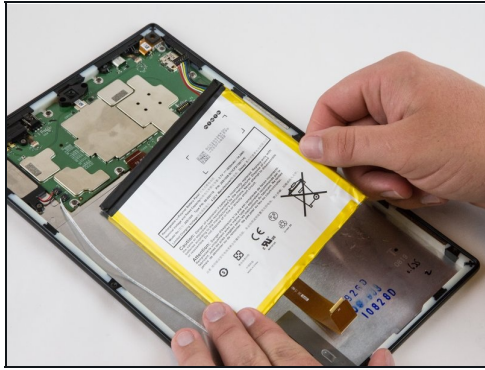
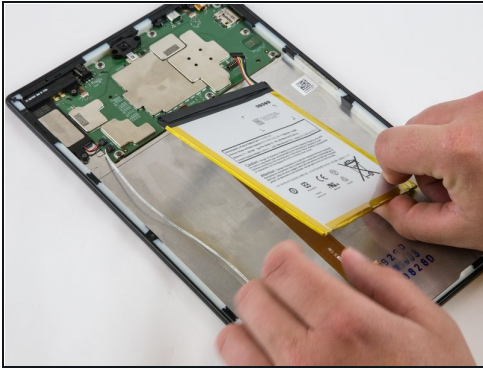
Step 7



⚠ Make sure all the adhesive is removed before trying to lift the battery from the case.

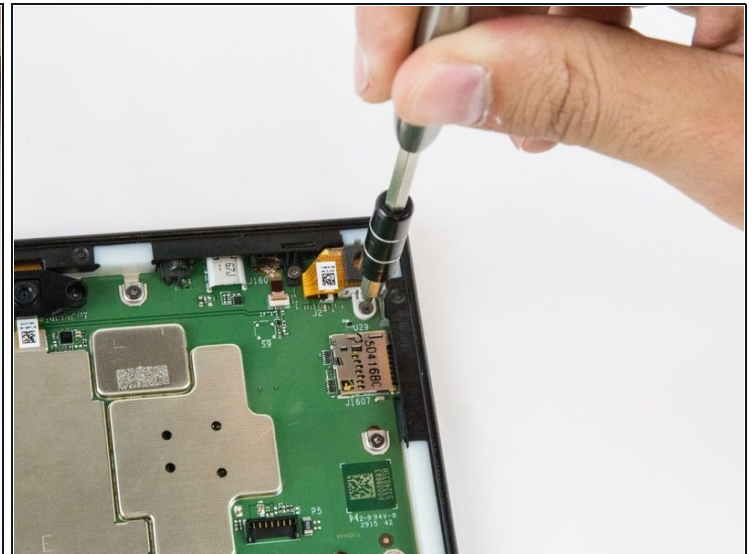
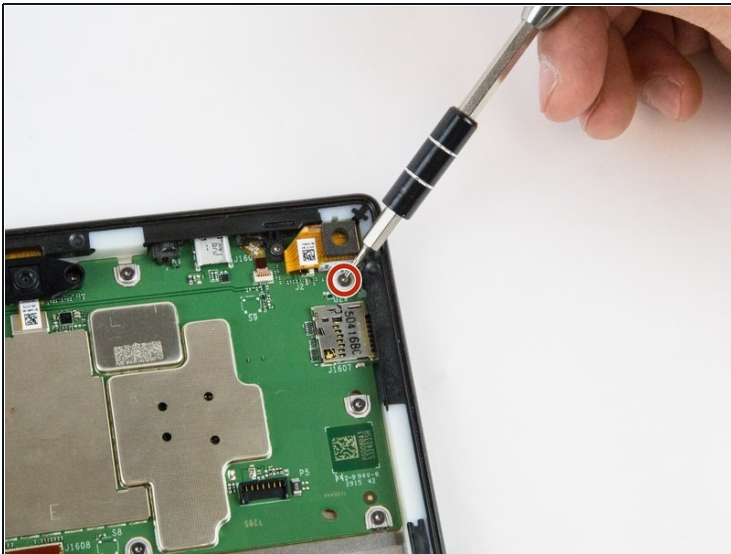
- After the battery is totally free of any adhesion, simply lift the battery from the case.

Step 8



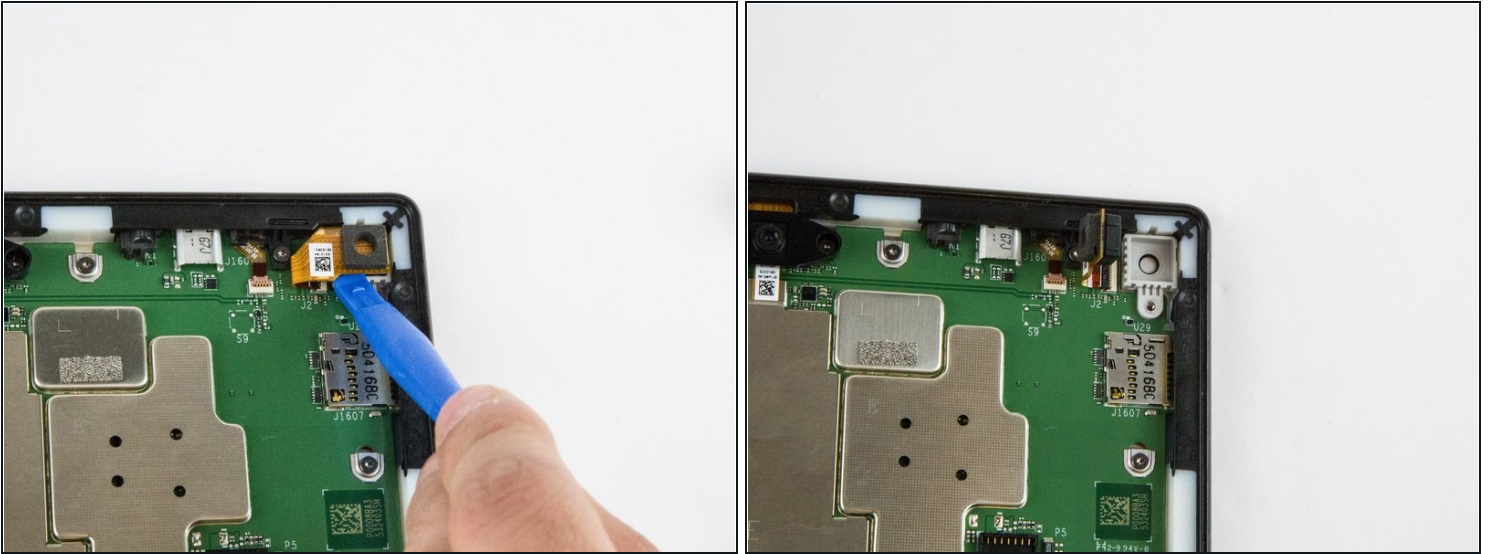
- Inspect battery for any leakage.
- ☑ Please follow all U.S. regulations and laws when disposing or recycling the battery.

Step 9 — Rear Facing Camera



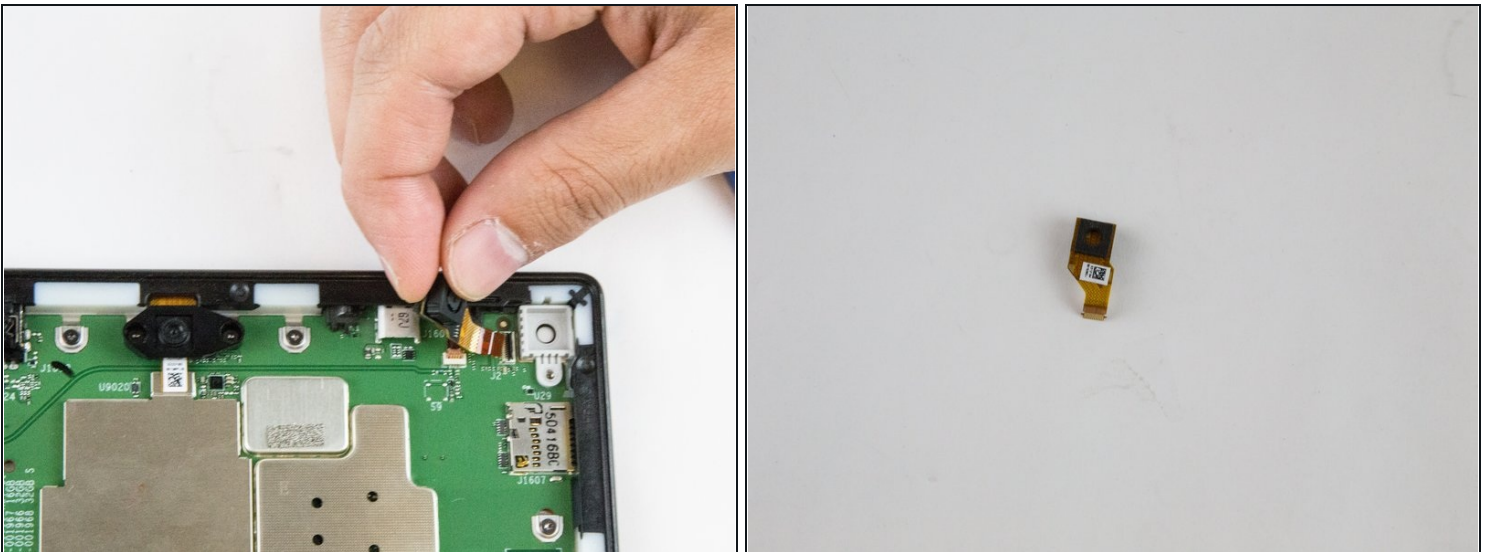
- Remove the single T5 Torx screw at the base of the camera.
- ☑ Once removed, place the screw aside in a safe location.

Step 10



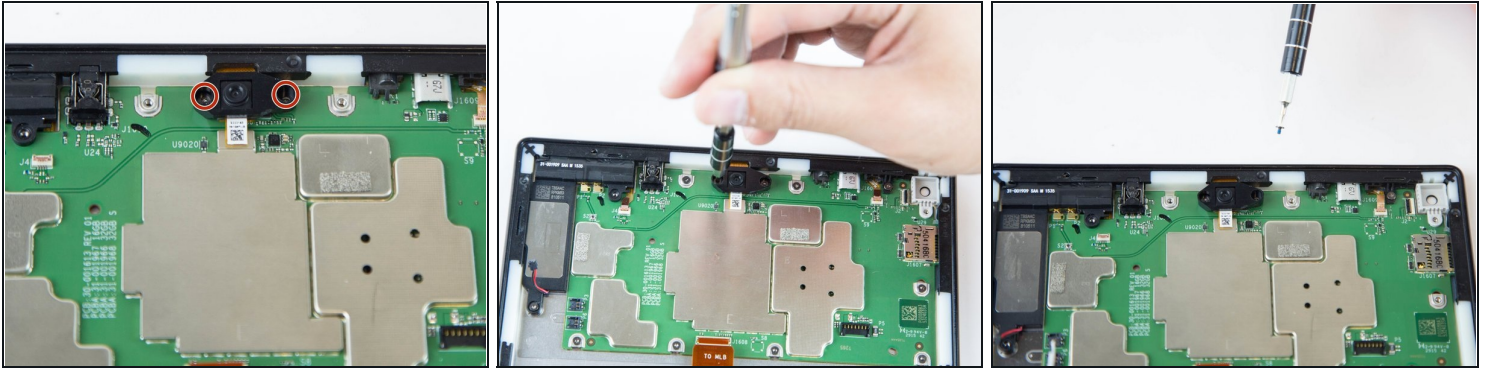
- Lift the camera from the case using the plastic opening tool.
- ① The camera is still connected to the motherboard via the ZIF connector.

Step 11



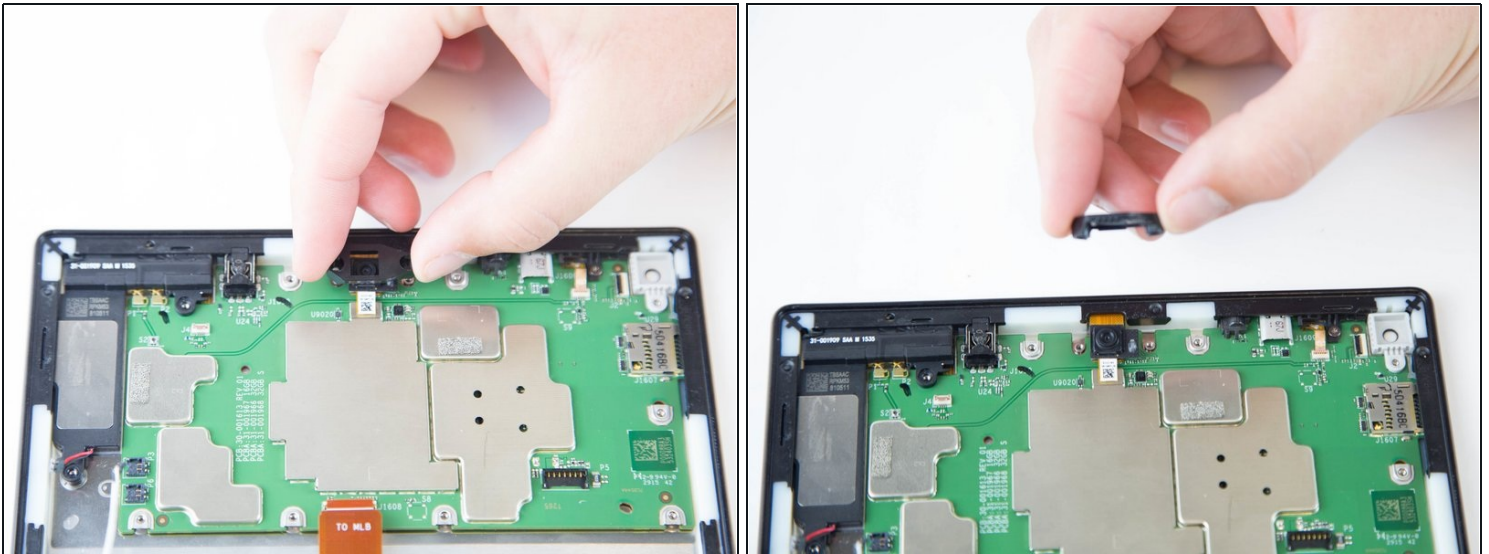
- Gently grab the camera and pull to remove.
- The camera is now free from the motherboard.

Step 12 — Front Facing Camera



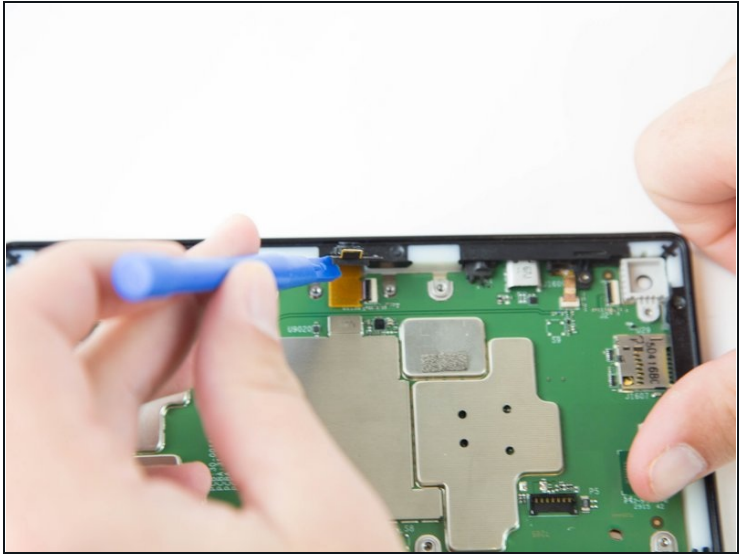
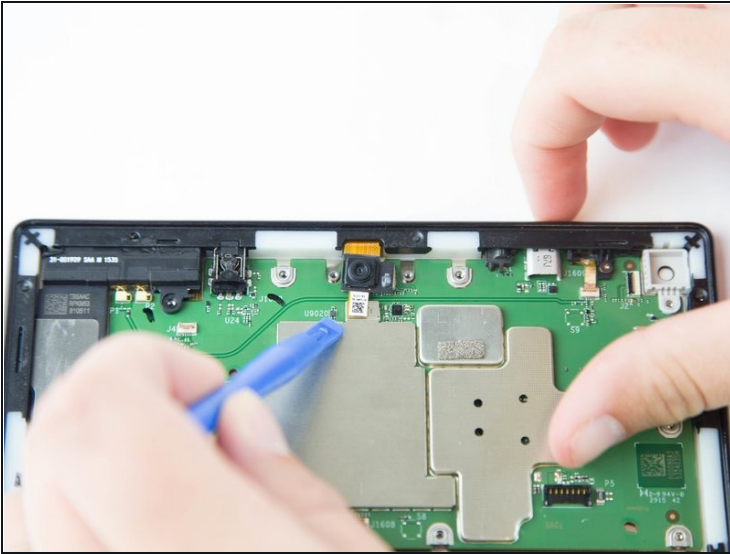
- Remove the two screws from front facing camera using the T5 Torx Screwdriver.
- ① Make sure you place the screws in a safe location nearby.

Step 13



- Lift the black plastic cover once the screws are removed.
- Place aside for later reassembly.

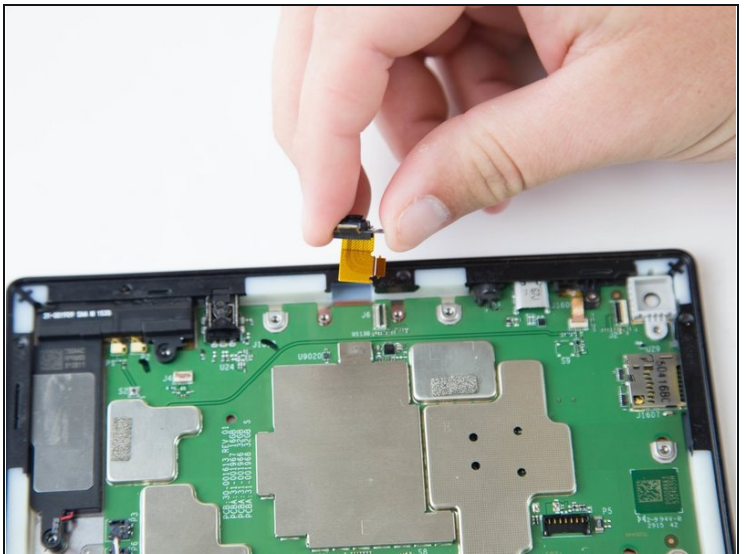
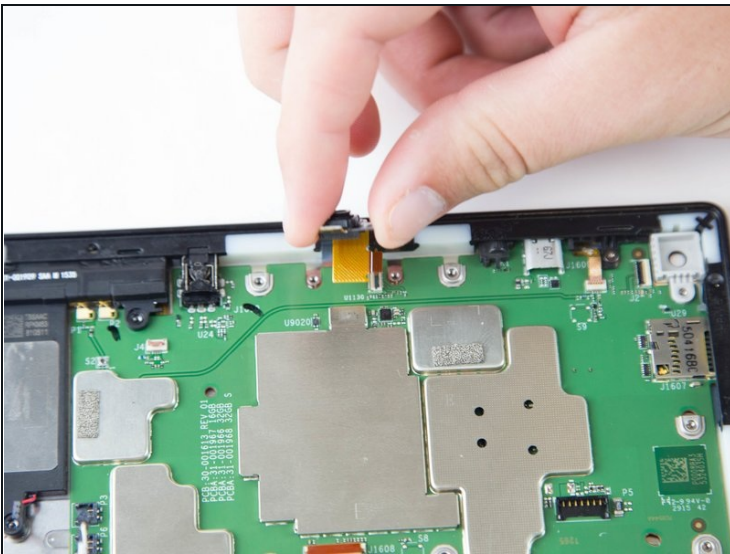
Step 14



- Detach the connector using a plastic opening tool or spudger.

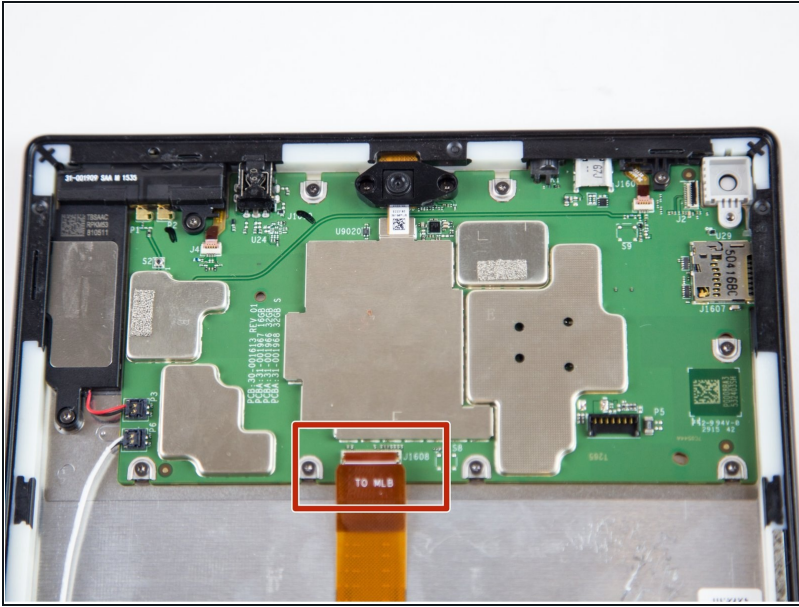
⚠ The camera is still connected to the motherboard.

Step 15



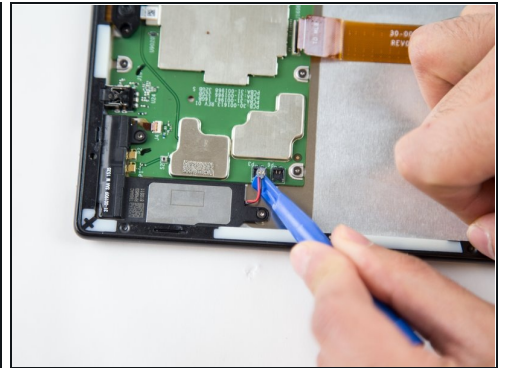
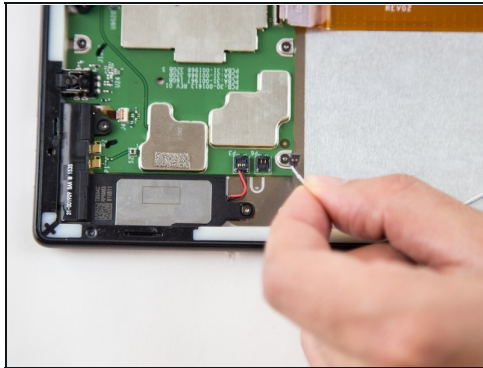
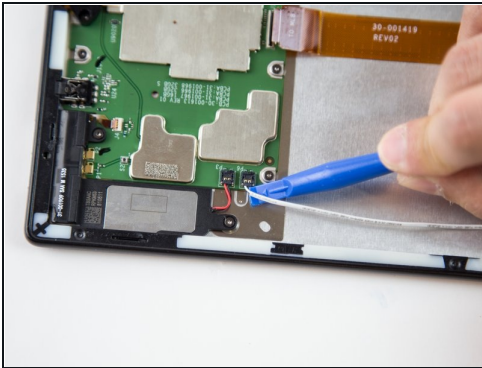
- Grip the camera and lift up to detach the ZIF connector from the motherboard.

Step 16 — Motherboard



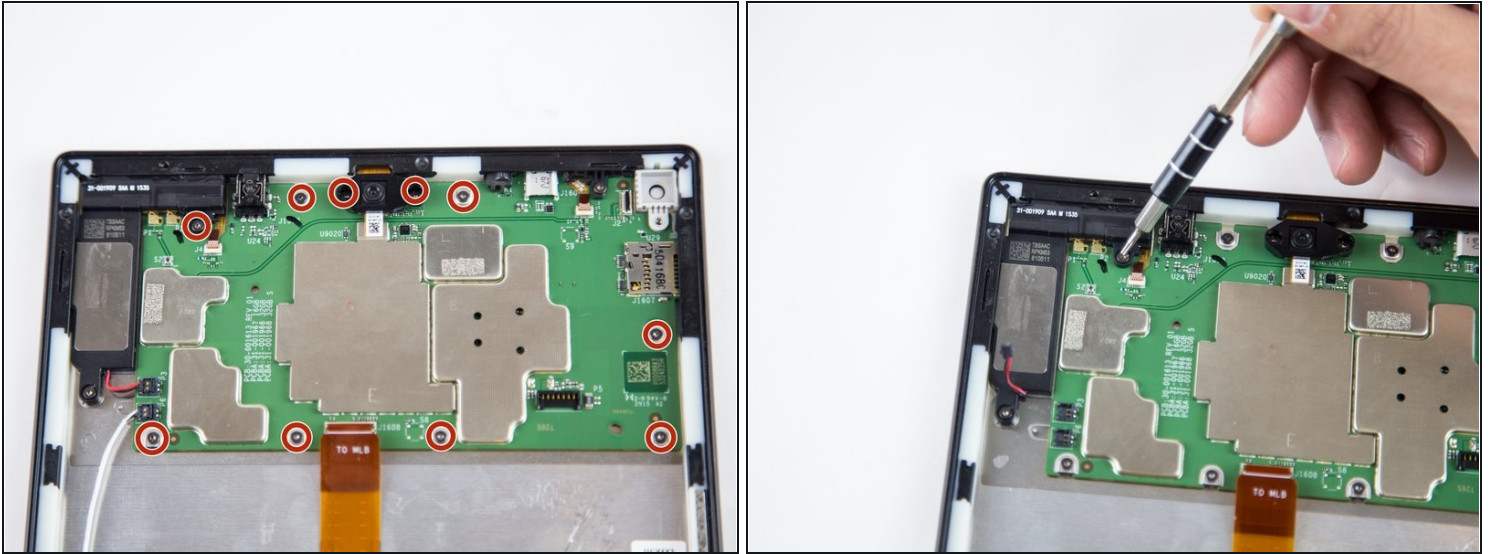
- Lift the ZIF connector up to disconnect from the motherboard.

Step 17



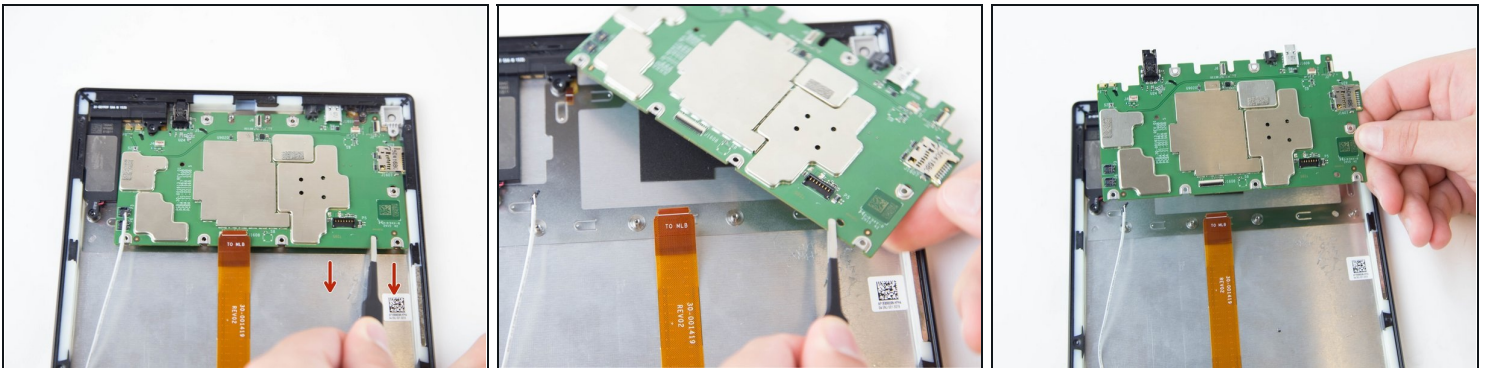
- Disconnect the connectors using the plastic opening tool.

Step 18



- Remove the ten T5 Torx screws securing the motherboard to the case.
- ⓘ Keep the screws together in a safe place for reassembly.

Step 19



- Lift and pull the motherboard down, gently, towards the case using the tweezers.

To reassemble your device, follow these instructions in reverse order.