



Motorola Lapdock 100 Lower Case Replacement

How to take apart the Motorola Lapdock to reach the internal components of the device.

Written By: Jessica



INTRODUCTION

To start your lapdock disassembly, you will need to start by removing the keyboard. After this is completed, you will need to remove the screws located underneath the keyboard. Then you will remove the four screws underneath the lapdock to remove the bottom case. This will give you access to the internal components of the device.



TOOLS:

- [iFixit Opening Tools](#) (1)
 - [Metal Spudger](#) (1)
 - [Phillips #00 Screwdriver](#) (1)
-

Step 1 — Lower Case



- To take off the Keyboard there are three tabs at the top of the Keyboard in the locations shown in the picture that you must press and unclip. They are located behind each of the keys that are removed.
- ⚠ You do not need to remove any keys to unclip the keyboard. We did this for picture purposes only.

Step 2



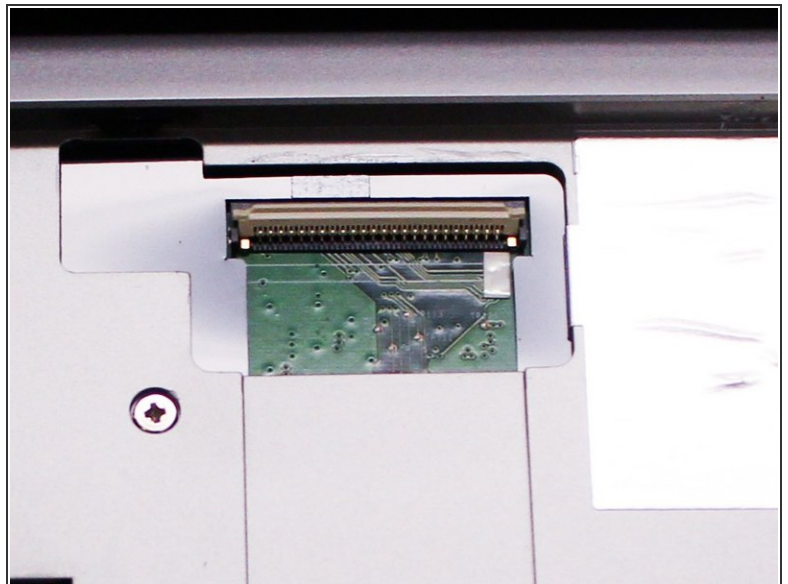
- You can use a small metal spudger to depress each tab to avoid scratching the keyboard.

Step 3



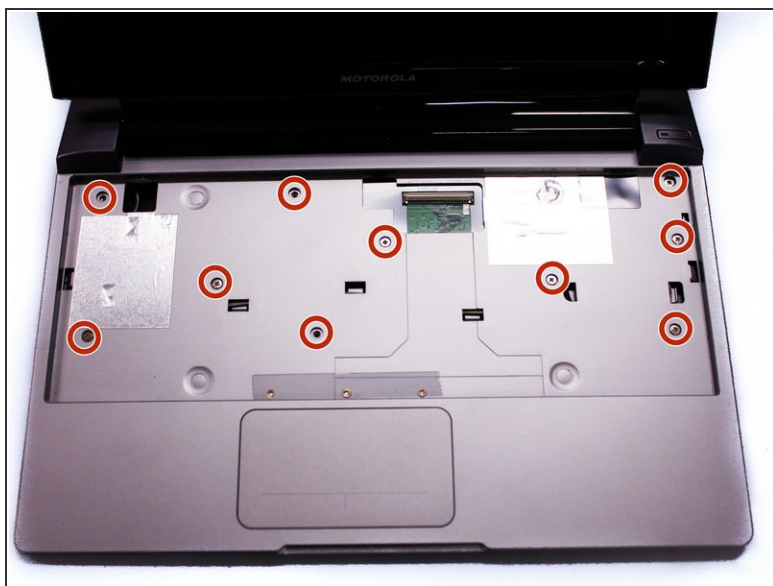
- Lift up keyboard so that you are able to see the ribbon cable connected to the contact.

Step 4



- Flip up the ZIF connector holding the ribbon cable on the contact as shown in the two pictures and then gently disconnect the ribbon cable.

Step 5



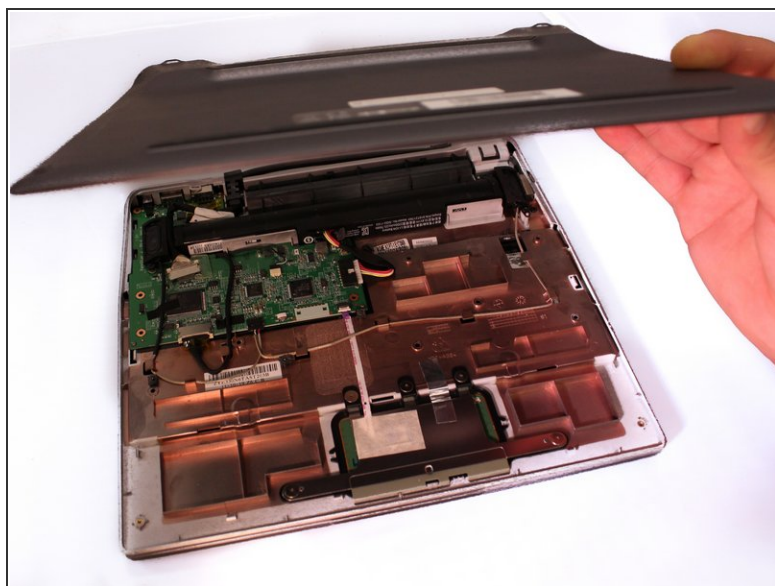
- After we remove the Keyboard, you can clearly see the screws under it. Remove the ten 3mm long phillips head screws.

Step 6



- Flip over the Lapdock and remove the four 3.5mm long phillips head screws from the bottom.

Step 7



- Use a plastic prying tool to take off the bottom case. Make sure that all of the clips are unclipped before trying to remove the case.

To reassemble your device, follow these instructions in reverse order.