



# Disassembling Canon PowerShot SD700 Lens

This guide is used to disassemble the lens from...

Written By: Aaron Lee



# INTRODUCTION

This guide is used to disassemble the lens from the camera. This will be used to further clean the lens if you experience the E18 error.

## TOOLS:

Phillips #00 Screwdriver (1)

## Step 1 — Outside Case



- Turn off the camera by pressing the power button above the LCD screen.

## Step 2



- Remove the two, small screws on the bottom of the camera using a Phillip's #00 screwdriver.

## Step 3



- Use a Phillips #00 screwdriver to remove the two, small screws on the right side of the camera.



## Step 4



- Use a Phillips #00 screwdriver to remove the screw on the left of the camera under the A/V out Digital label.

## Step 5



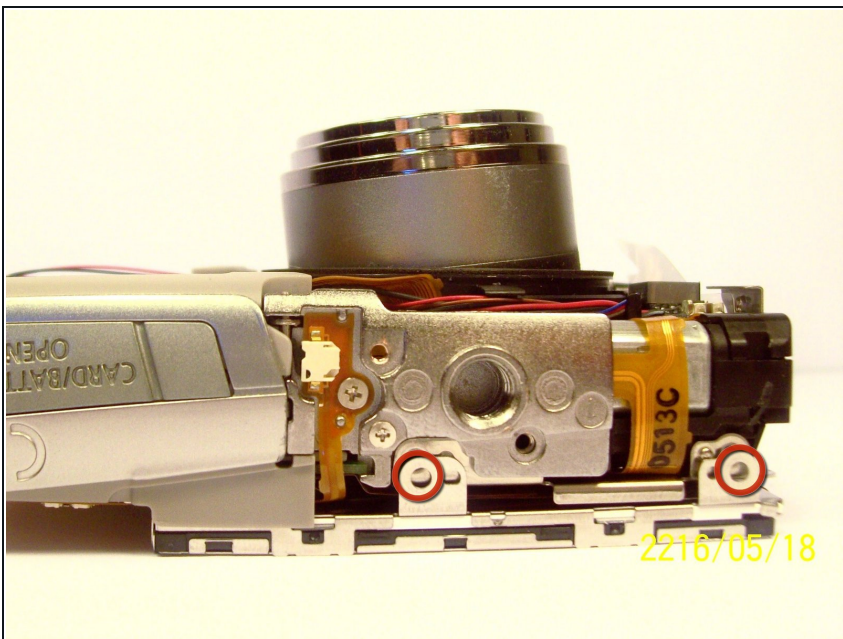
- Use a Phillips #00 screwdriver, remove the screw on the bottom of the camera near the battery and memory card slots.
- ⓘ This screw will be longer than the rest of the screws.

## Step 6



- Remove the front, back, and side casings from the camera and set to the side.

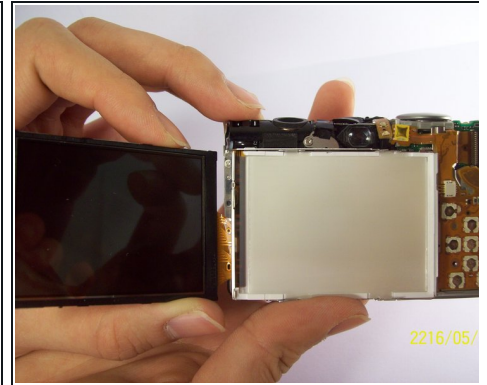
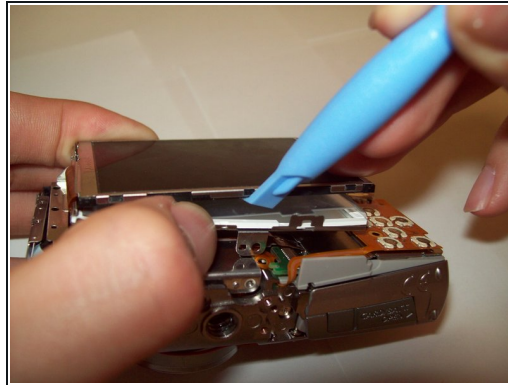
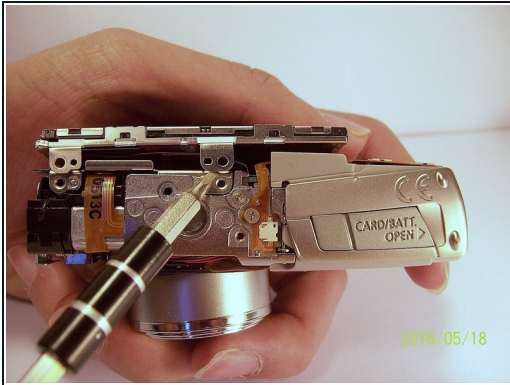
## Step 7 — LCD screen



- Remove the two screws that connect the LCD and backlight to the main body of the camera.

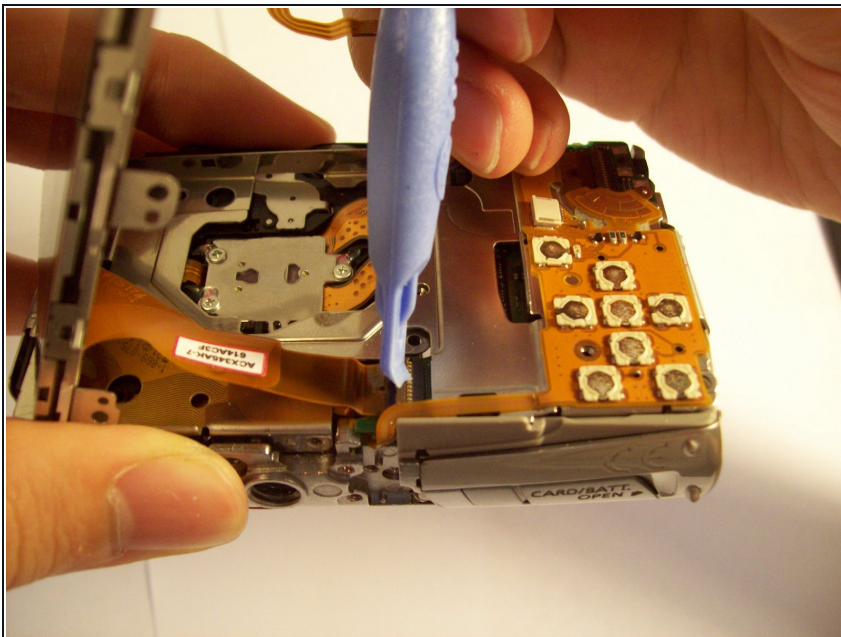


## Step 8



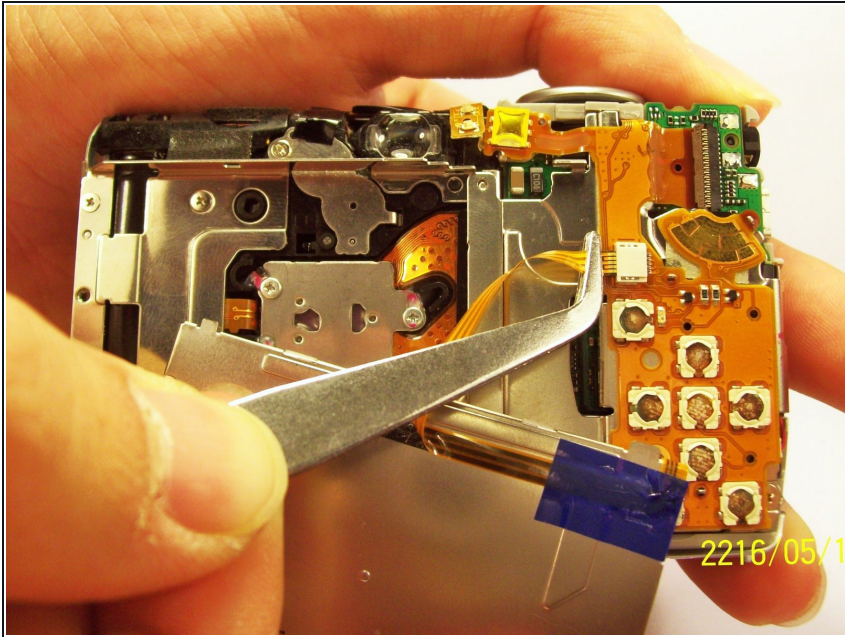
- Gently pry the LCD and the backlight from the main body of the camera.
- Gently pry the LCD from the backlight.
  - The thin ribbon cable is for the backlight.
  - The thick ribbon cable is for the LCD screen.

## Step 9



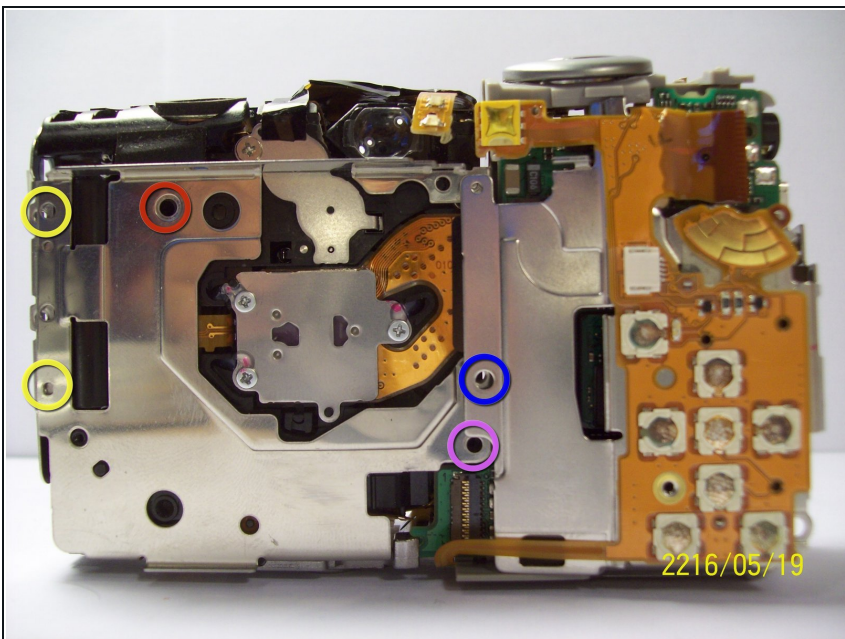
- Carefully lift the ZIF connector that covers the thick ribbon cable.
- This ZIF connector is fragile. Use caution when lifting it from its down position.
- Insert the new LCD and reassemble the camera.

## Step 10 — Backlight



- Unplug the ribbon from the housing on the circuitry.
- Take the new ribbon and insert it into the housing.
- Tweezers or a tool with a sharp point can be used.

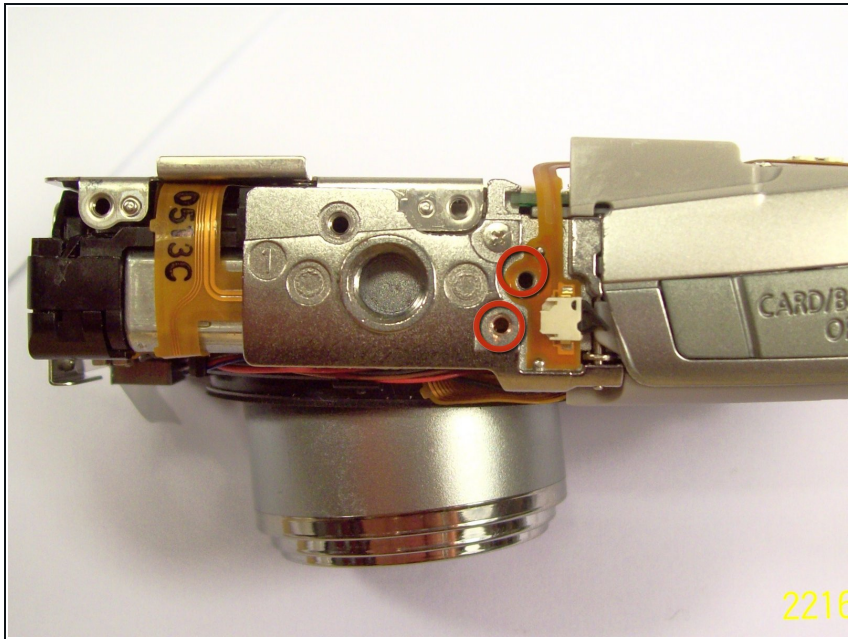
## Step 11 — Motherboard



- Once the LCD and Backlight are detached, remove the larger screw marked in red in the picture as well as the four smaller sized screws marked in blue.

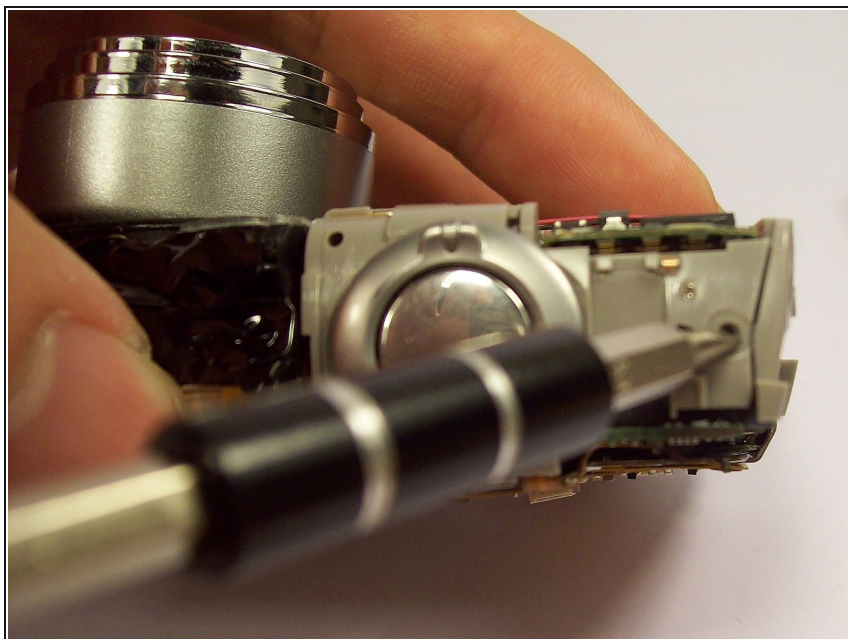


## Step 12



- Remove the two screws near the the tri-pod mount with a Philips head screw driver.

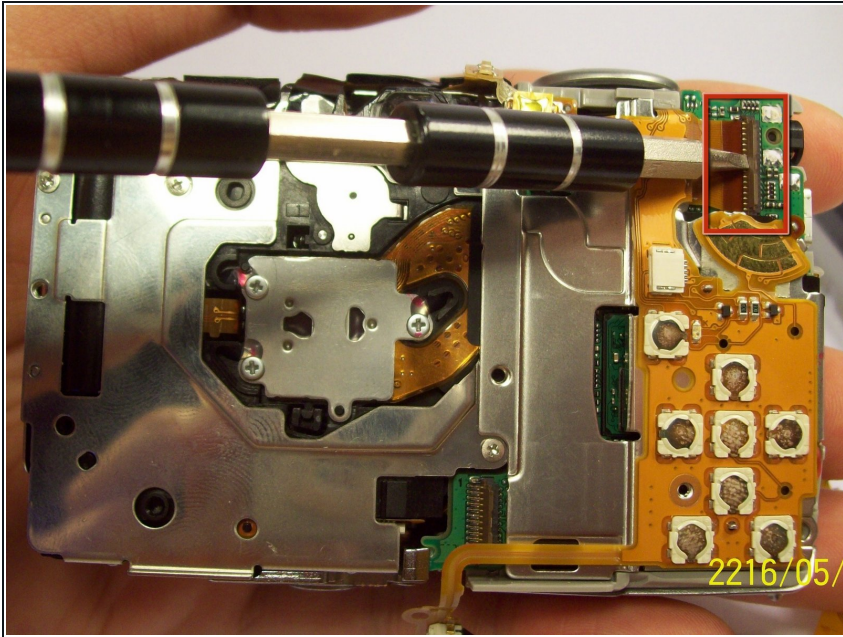
## Step 13



- Remove the screw next to the shutter with a Philip's head screw driver.

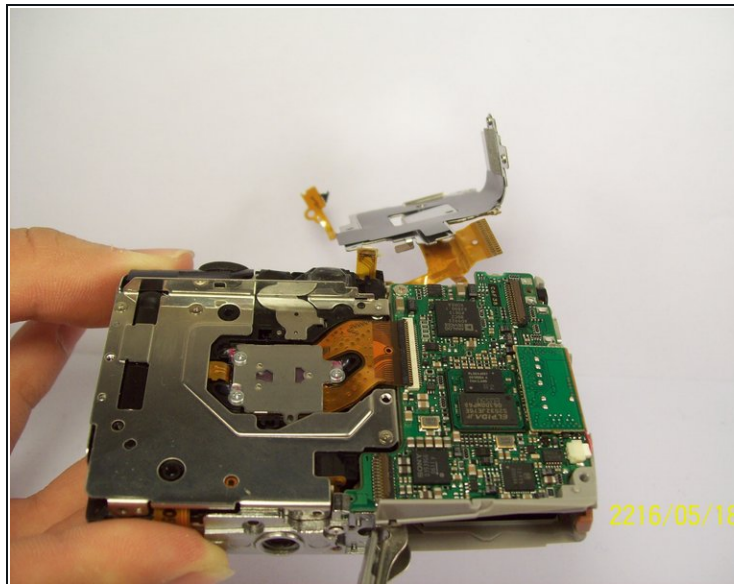
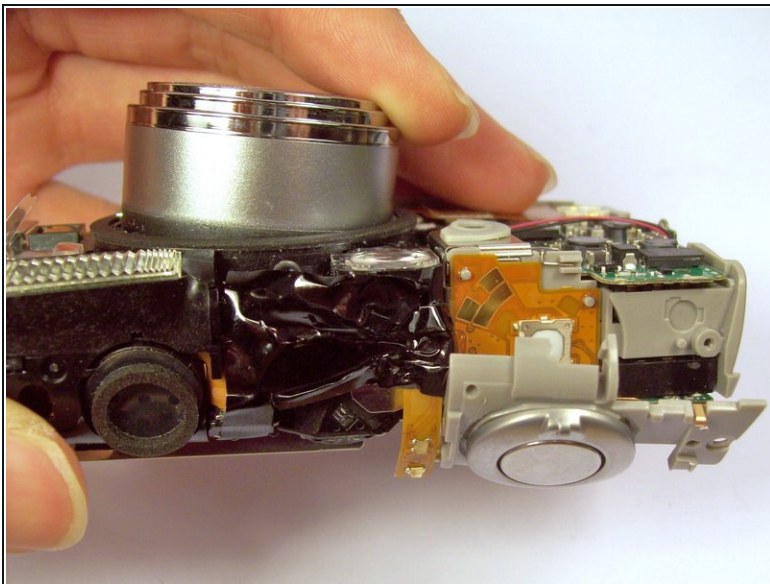


## Step 14



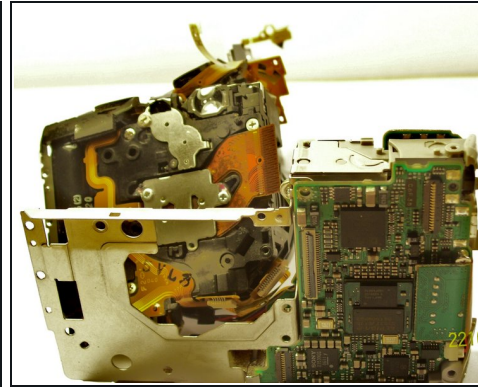
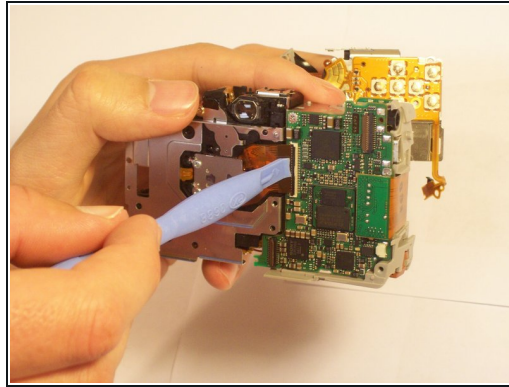
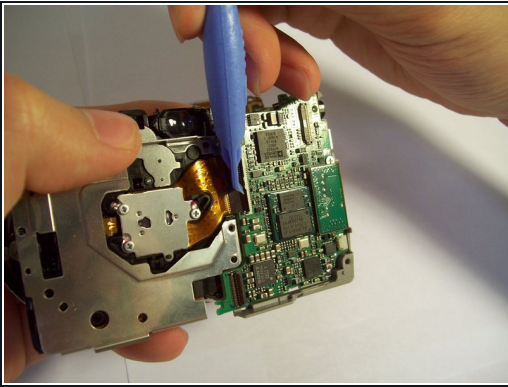
- Remove the orange ribbon cable by lifting the ZIF connector attached to the ribbon with a flat head screw driver or spudger.

## Step 15



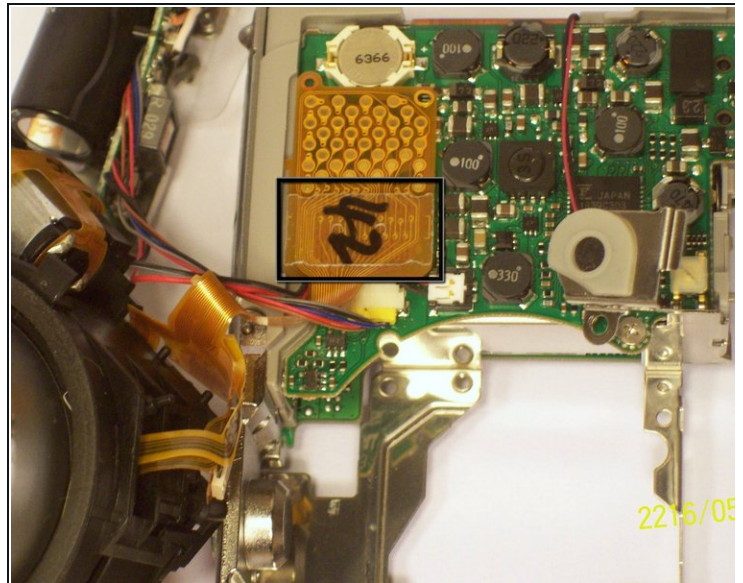
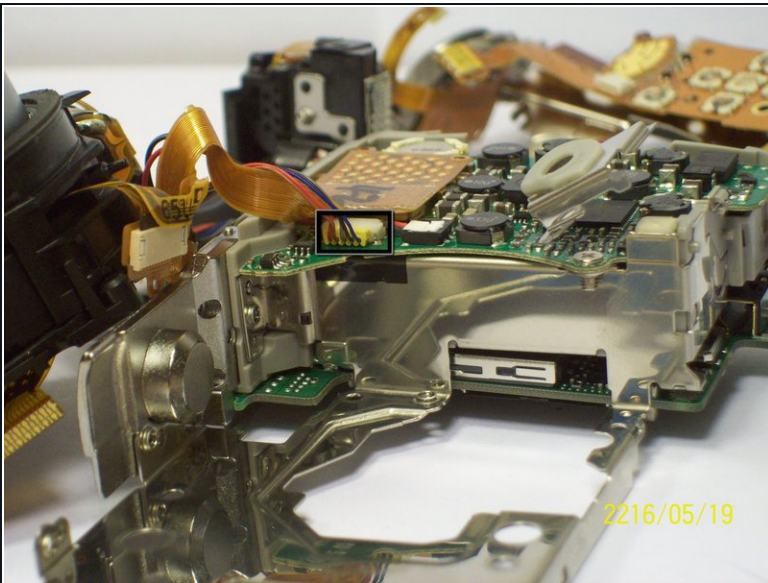
- Carefully lift the shutter along with the ribbon connected to it. This will remove the casing around the motherboard.

## Step 16



- With the motherboard casing detached, remove the short orange ribbon by lifting the ZIF connector with a spudger or other plastic opening tools and slide the ribbon out. Detaching this ribbon will disconnect the side of the camera containing the motherboard from the rest of the camera.

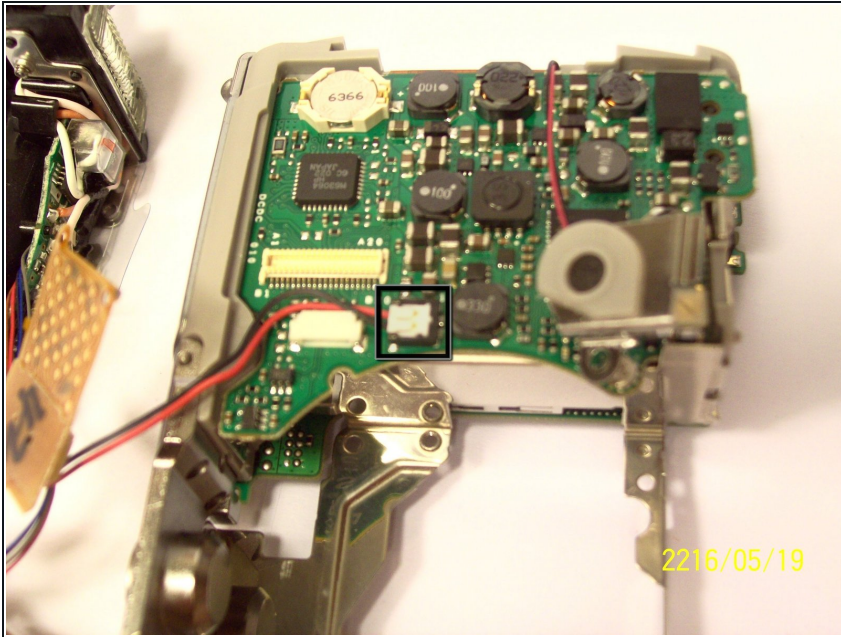
## Step 17



- First remove the wires that are attached to the motherboard, as shown by the black box. You can detach them by simply pulling them out.
- Next you can remove the film by lifting it gently from the motherboard.

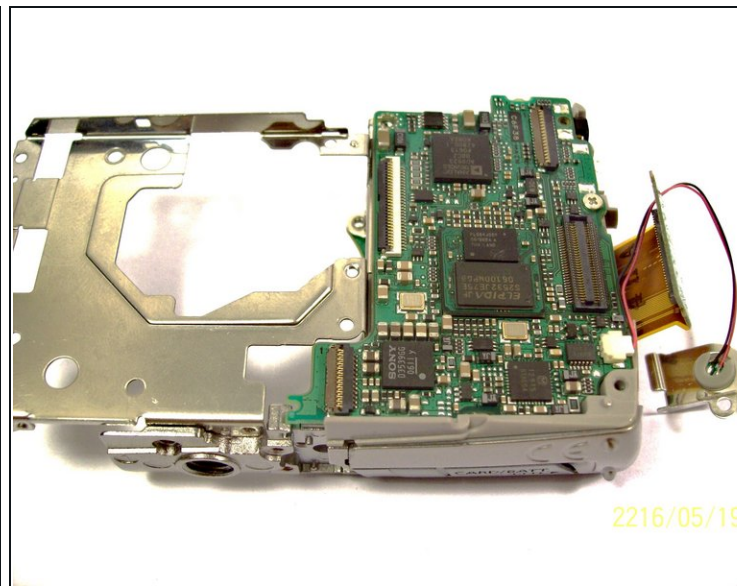
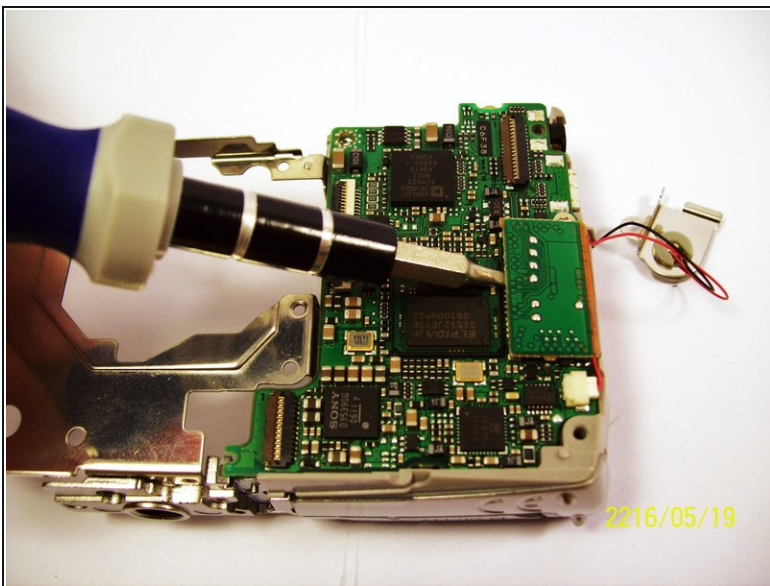


## Step 18



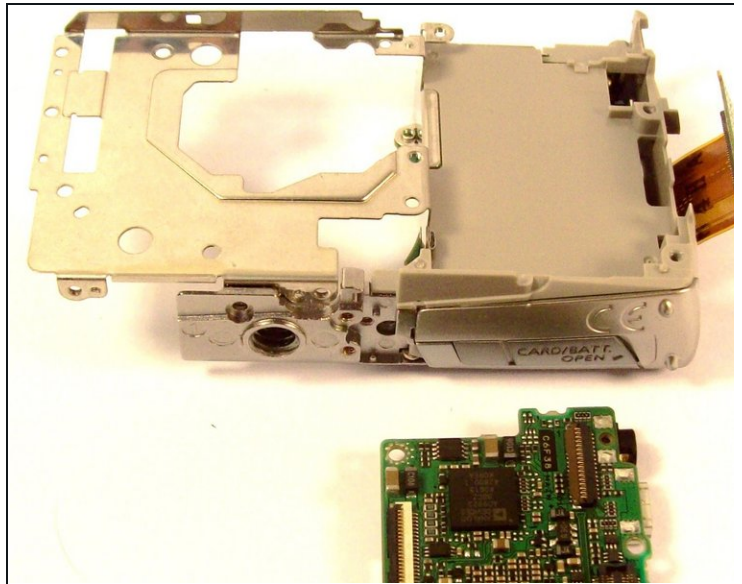
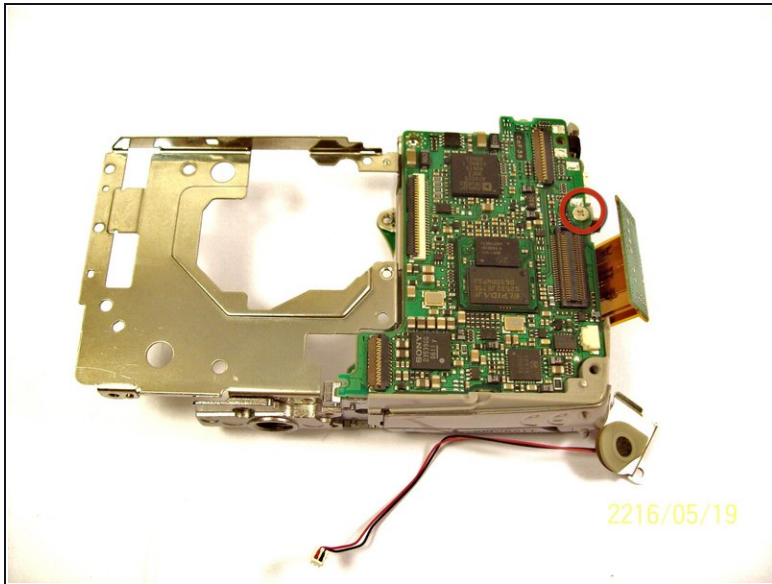
- Remove the last wires connected to the motherboard. You can remove it by gently lifting it upwards.

## Step 19



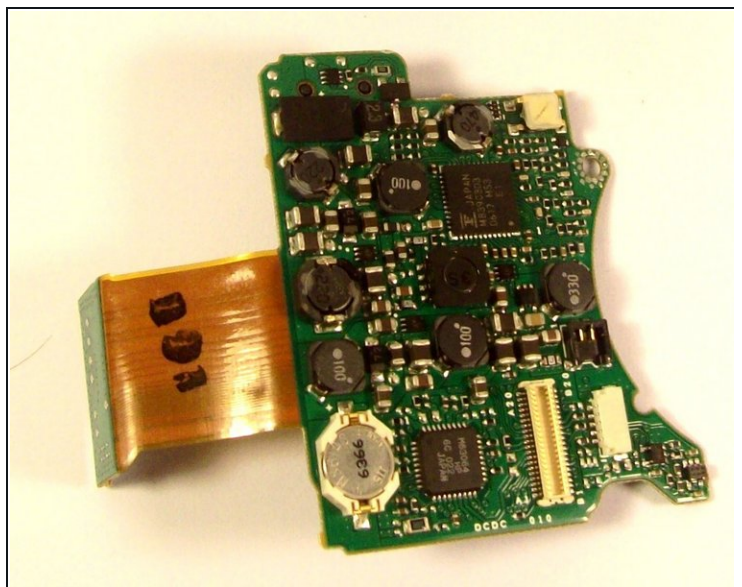
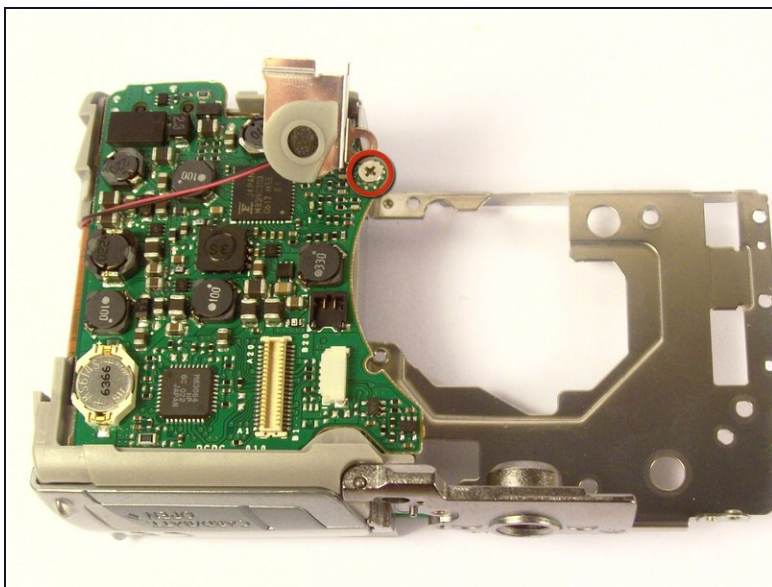
- Place a flathead screwdriver and gently lift the circuit attached, as shown on the picture.

## Step 20



- Remove the screw using a philip 00 screwdriver.
- Once the screw is removed, gently lift the motherboard away from the case.

## Step 21



- Remove the screw as shown by the red circle.
- Once the screw is removed, you can remove the board.



## Step 22 — Lens



- Once you have removed the lens from the main chassis, gently brush off any dirt, sand, or dust that may have accumulated in the crevices. Using a compressed air canister or a brush can help remove all the dirt.

To reassemble your device, follow these instructions in reverse order.