



Sony Xperia E4 Logic Board Replacement

Sony Xperia E4 Logic Board Replacement

Written By: ZFix



INTRODUCTION

E2104, E2105, E2115, E2124

How to disassemble Sony Xperia E4 and remove / replace the logic board.

[video: <https://www.youtube.com/watch?v=dIpq41LcFzk>]



TOOLS:

- [iFixit Opening Picks set of 6](#) (1)
 - [T4 Torx Screwdriver](#) (1)
 - [Tweezers](#) (1)
-

Step 1 — Battery Cover



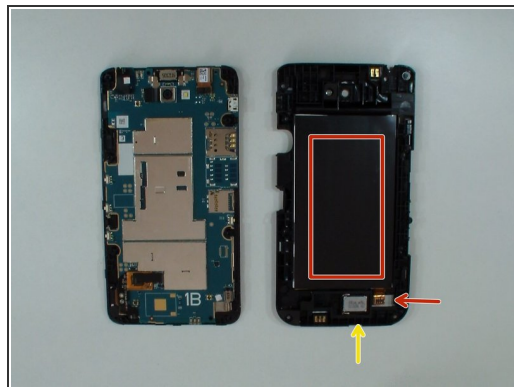
- Remove the back cover and any installed SIM and memory cards.
- There are 8x black screws Torx T4. Remove them.

Step 2



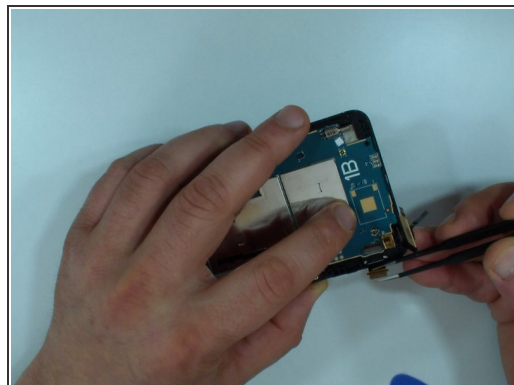
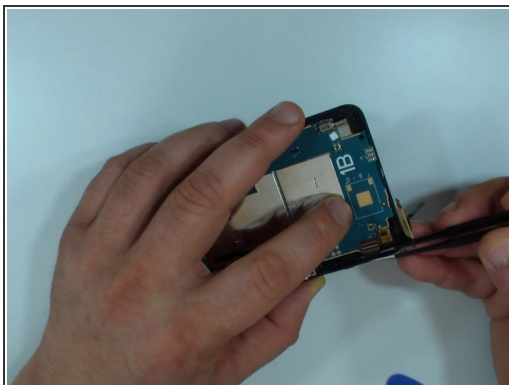
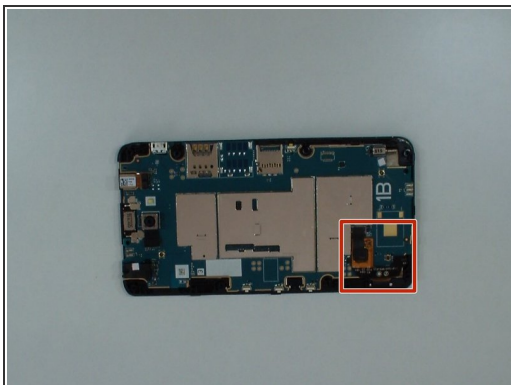
- Remove the small black rubber at the lower left corner.
- Under it is the battery flex cable, disconnect it.

Step 3



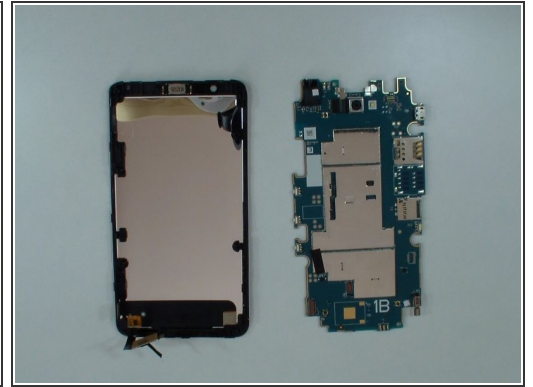
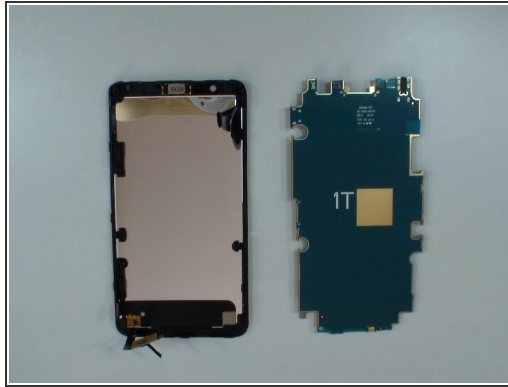
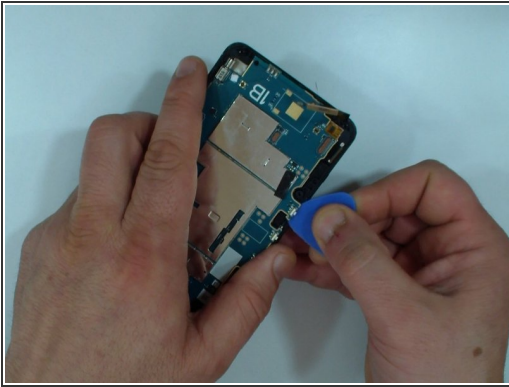
- Use a plastic tool to separate the middle frame.
- The battery is glued to the middle frame with an adhesive tape.
- Loudspeaker

Step 4 — Logic Board



- Disconnect the touch screen flex cable.
- Under it is the LCD flex cable. Disconnect it also.

Step 5



- Remove the logic board.



Be careful for the flex cables.

To reassemble your device, follow these instructions in reverse order.