



# Samsung Galaxy Grand Midframe Replacement

If your midframe has broken or cracked for any reason you may need to replace it.

Written By: Kyle Ruff



---

# INTRODUCTION

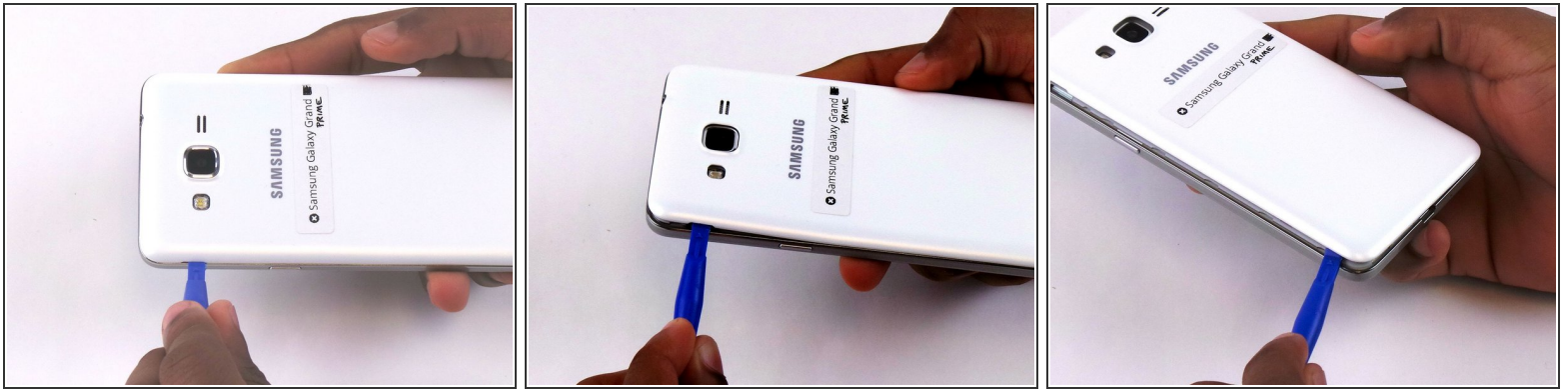
This guide is needed if your midframe on your phone is broken or cracked.



## TOOLS:

- [iFixit Opening Tools](#) (1)
  - [Phillips #000 Screwdriver](#) (1)
-

## Step 1 — Battery



- Remove the back cover of phone by lifting up on the back cover tab with the blue plastic opening tool.
- Go around the edge of the back cover to completely remove it.

## Step 2 — Remove the battery.



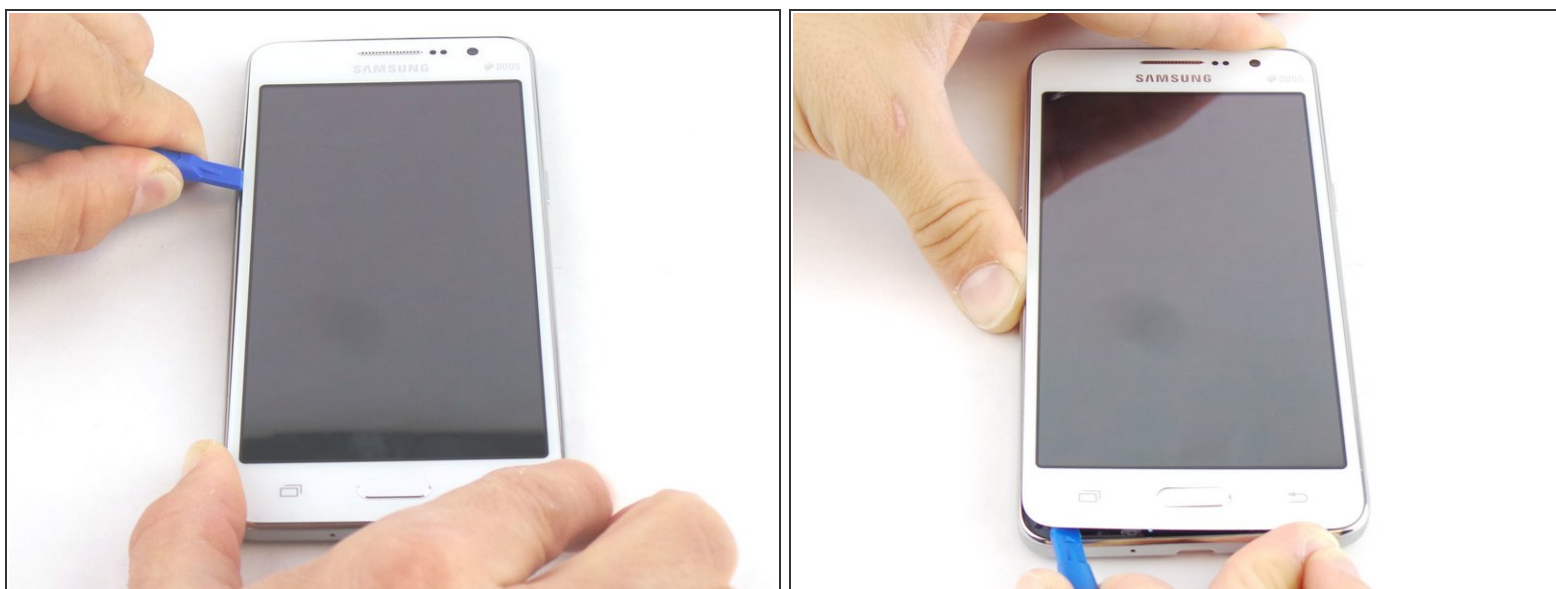
- Remove the old battery by lifting up on the thumb tab.
- Periodically clean the brass terminals on the battery and the phone. Place a minute amount of ISO on a Q-tip and gingerly clean the connections.

## Step 3 — Midframe



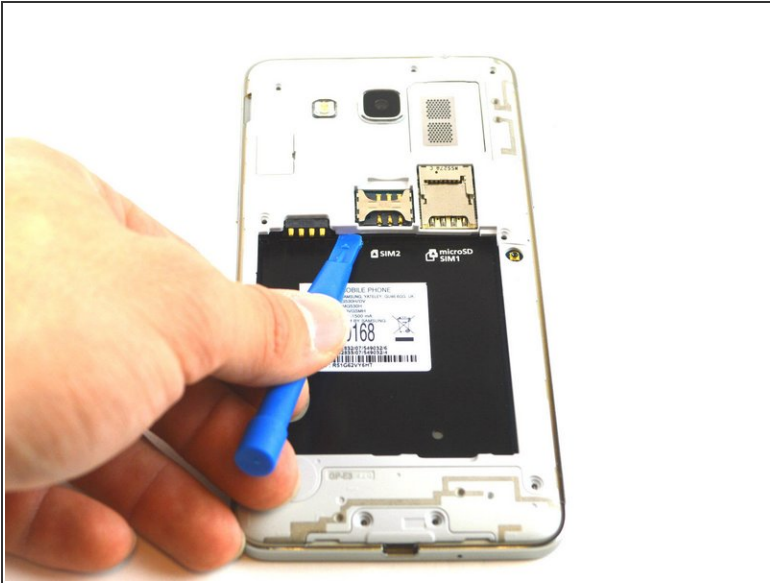
- Remove the nine 4mm screws from the midframe with a Phillips #000 screwdriver.

## Step 4



- Wedge the blue plastic opening tool in between the front and side panel.
- Move the blue plastic opening tool around the edges between the front and side panel.

## Step 5



- Make sure that you detach the mid-frame from the inside too.

To reassemble your device, follow these instructions in reverse order.