



# Sony Clie PEG-UX50 Rear Case Replacement

Rear Cover Removal allows the inside of the...

Written By: Christopher M Garcia



# INTRODUCTION

Rear Cover Removal allows the inside of the Clie to be exposed for further replacement of internal components

---

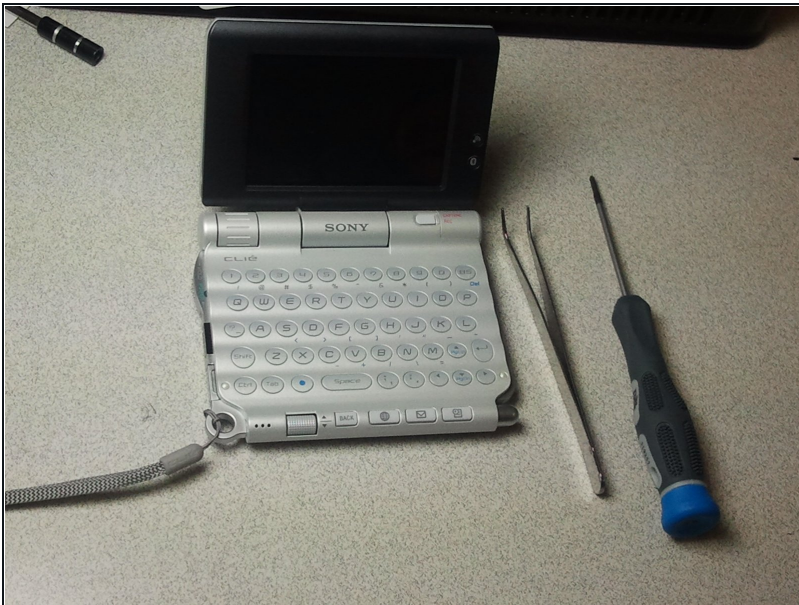
## TOOLS:

Phillips #1 Screwdriver (1)

Tweezers (1)

---

## Step 1 — Rear Case



### Tools Needed

- Phillips Screwdriver
- Tweezers



## Step 2



- Using Phillips screwdriver, remove 4 screws from the rear cover.
- Remove 1 screw from the right side.
- Remove 1 screw from the top

## Step 3



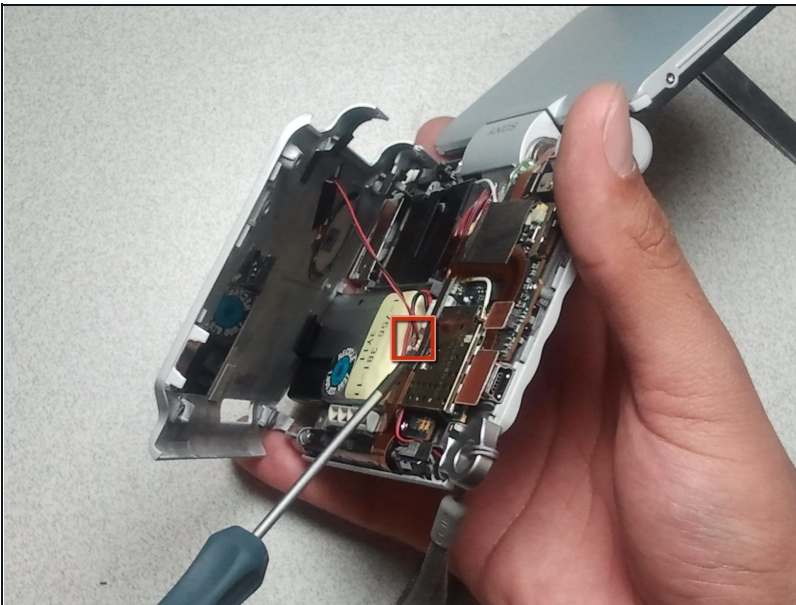
- Gently pry rear cover to remove USB port cover and Hold Switch.

## Step 4



- Remove side cover.
- Gently pull the rear cover to separate from device.

## Step 5



- Slowly pull rear cover from device being careful not to pull the speaker connection wire.
- Remove speaker wire from device.
- The rear cover is now separated from the device.

To reassemble your device, follow these instructions in reverse order.