



Electrohome EAAC475 Projector Lens Replacement

This guide will help you to learn how to replace the focus lens of the projector on the side of your electrohome EAAC475.

Written By: Sterling Fulk



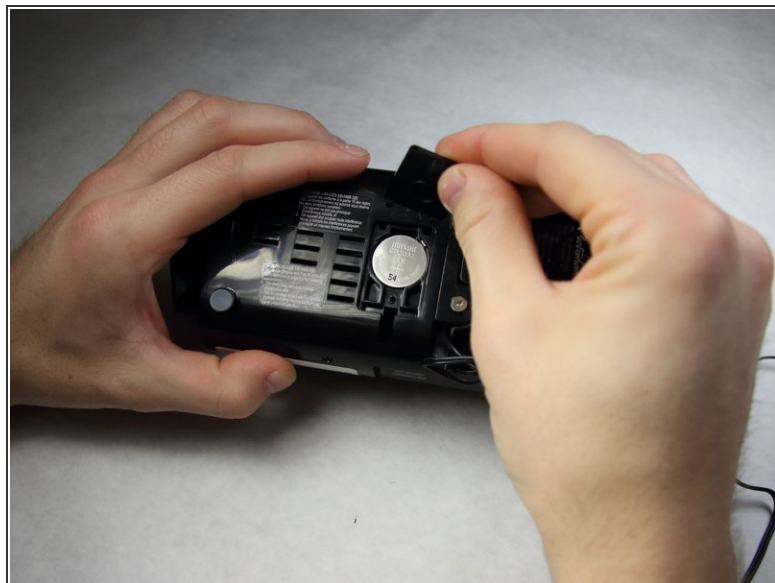
INTRODUCTION

Sometimes the focus lens can go bad or detaches from its holder. This guide will help you how to put it back in place or replace with a new one so that your electrohome EAAC475 works properly.

TOOLS:

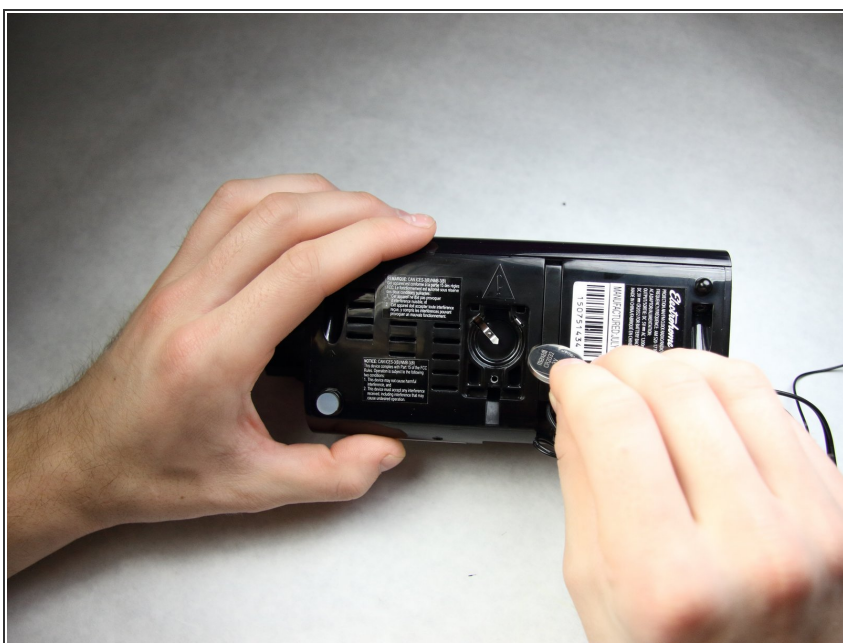
- [iFixit Opening Tools](#) (1)
 - [Phillips #1 Screwdriver](#) (1)
-

Step 1 — Battery



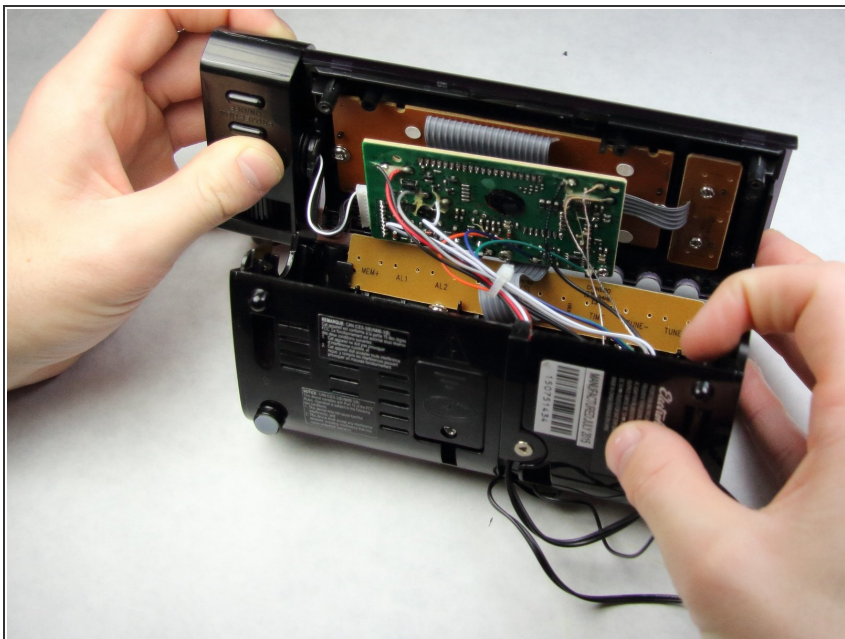
- Remove the 10 mm Phillips #1 screw from the battery cover.
- Remove the battery cover.

Step 2



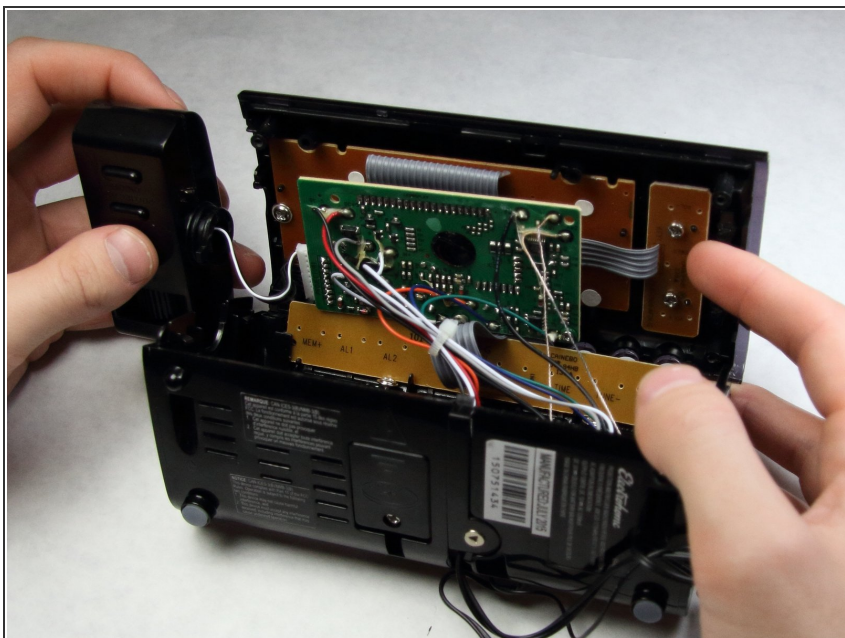
- Remove the flat lithium battery.

Step 3 — Projector Lens



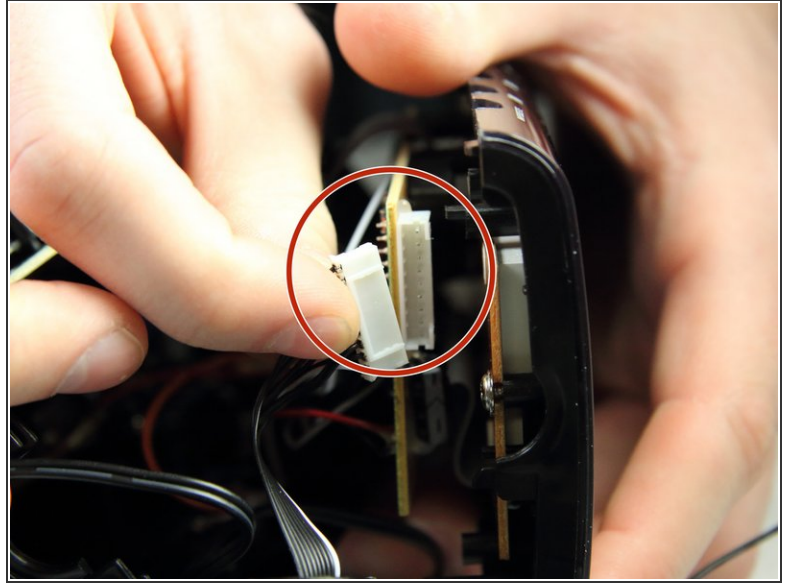
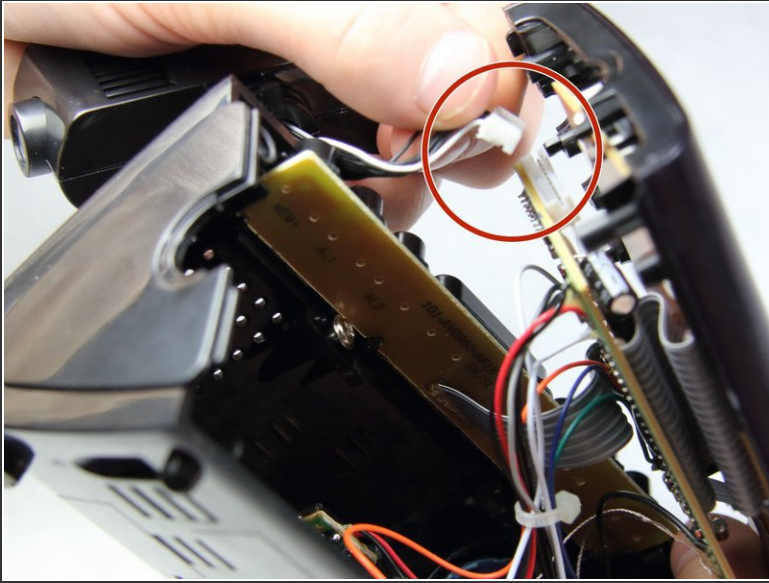
- Slowly and carefully move one side away from another without detaching anything on the device.

Step 4



- Detach the projector.

Step 5



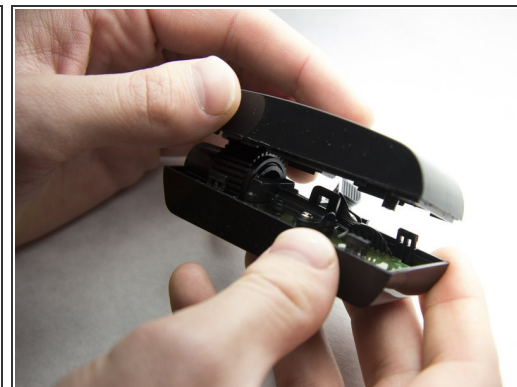
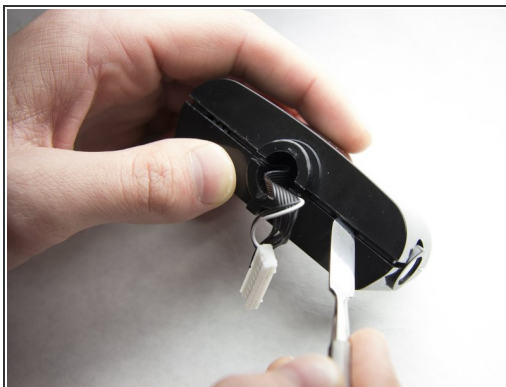
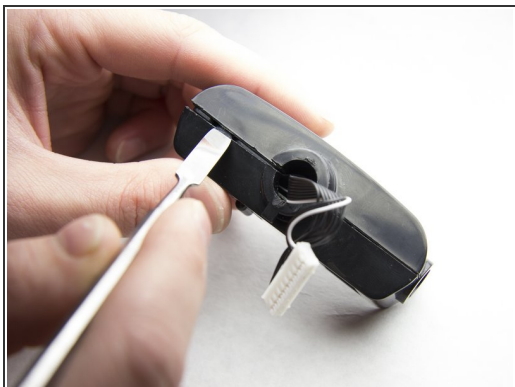
- Unplug the projector's connector from the circuit board.

Step 6



- Take off the rubber ring.

Step 7



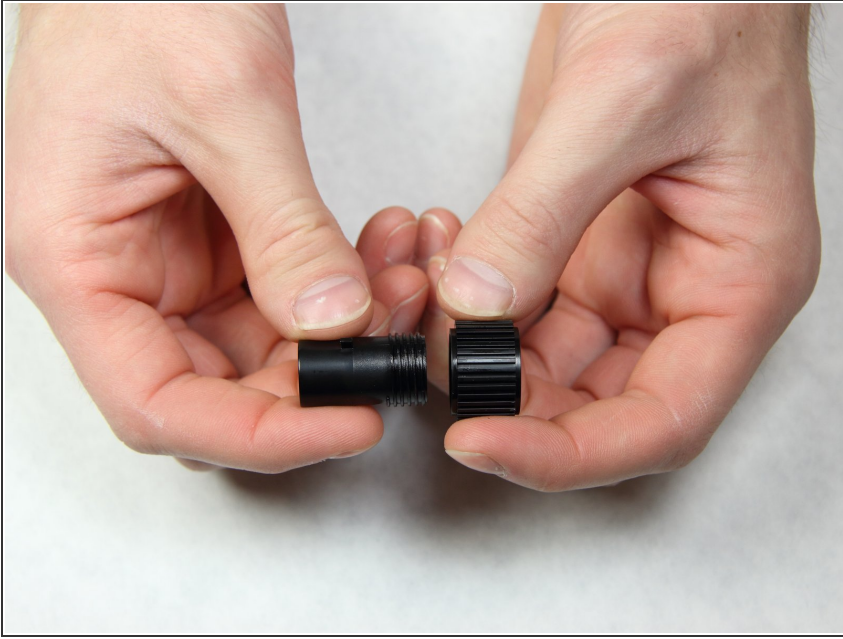
- Using a metal spudger, pry into the crease until it separates enough to slip the spudger between the pieces.
- Slide the tool along the crease to separate.

Step 8



- Take the lens out of the projector.

Step 9



- Separate the lens and the gear by unscrewing the gear.

To reassemble your device, follow these instructions in reverse order.