



Samsung Propel Motherboard Replacement

Samsung Propel can have numerous problems that cause it to not work properly. The source of these problems can be caused by a fried motherboard.

Written By: Minh



INTRODUCTION

A Samsung Propel motherboard helps the phone function as needed by the user. If your Samsung Propel motherboard is faulty and needs replaced, follow this guide with steps on how to remove the battery and motherboard for replacement.

TOOLS:

- [Phillips #00 Screwdriver](#) (1)
 - [Flathead 3/32" or 2.5 mm Screwdriver](#) (1)
-

Step 1 — Battery



- Remove the back panel of the phone.

Step 2



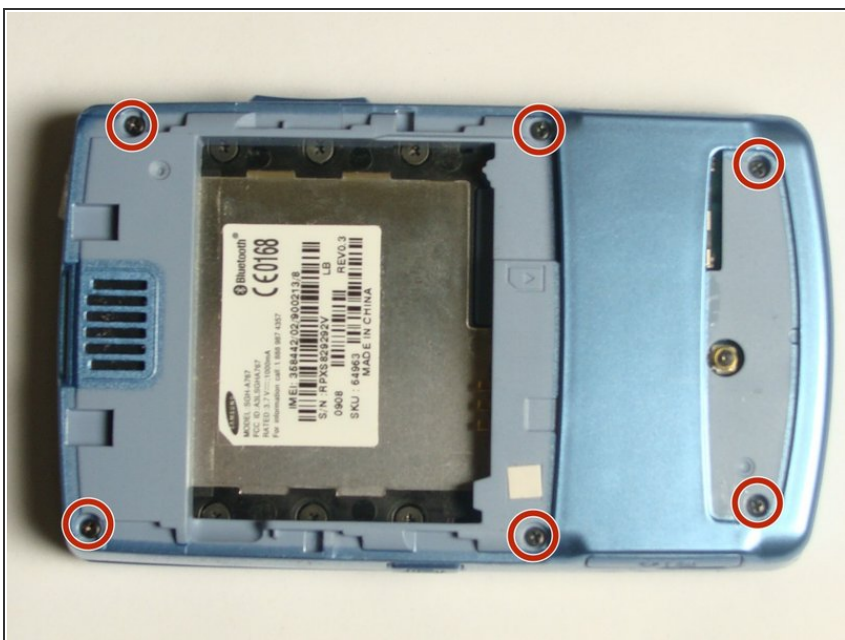
- Remove the old battery and replace with the new one.

Step 3 — Motherboard



- Use a flat-head screwdriver to remove the back lid.

Step 4



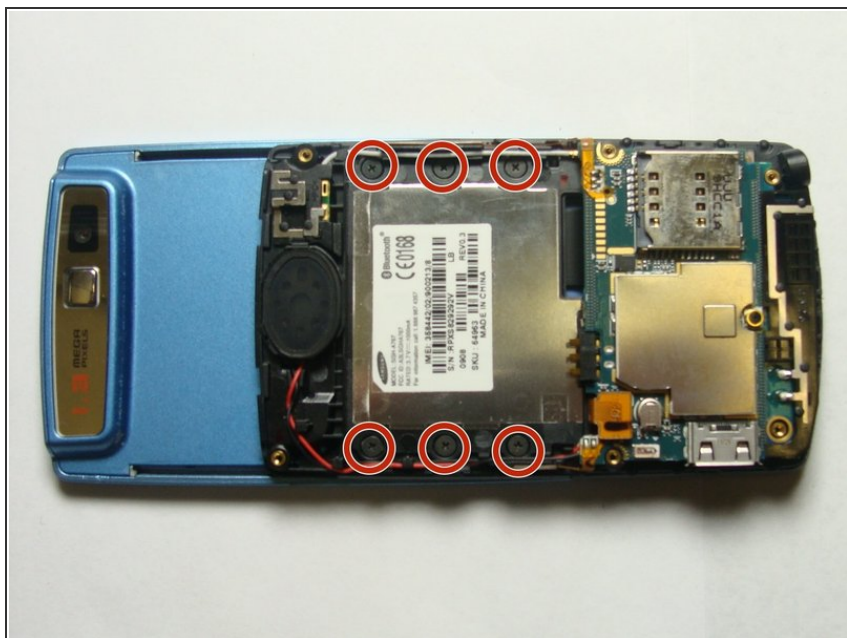
- Locate the six screws and remove them with a Phillips #00 Screwdriver.

Step 5



- Insert the flat-head screwdriver into the crevice.
- Slide and dislodge the snap-ons that are beneath the crevice.
- Remove the back frame of the device.

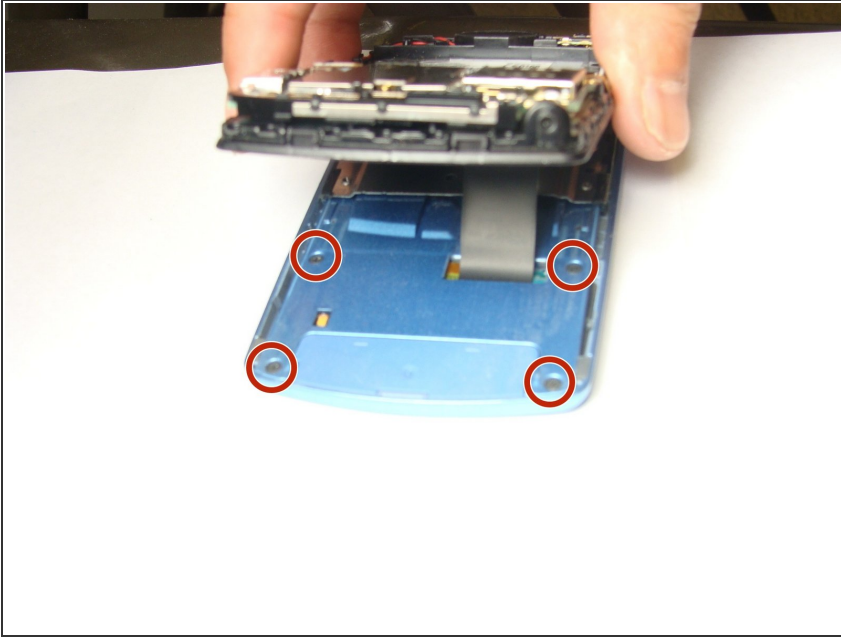
Step 6



- Locate and remove the six screws with a Phillips #00 Screwdriver.
- Separate the black middle frame from the front frame.

 Be careful not to tear the phone bus.

Step 7



- Locate and remove the four screws with a Phillips #00 Screwdriver.

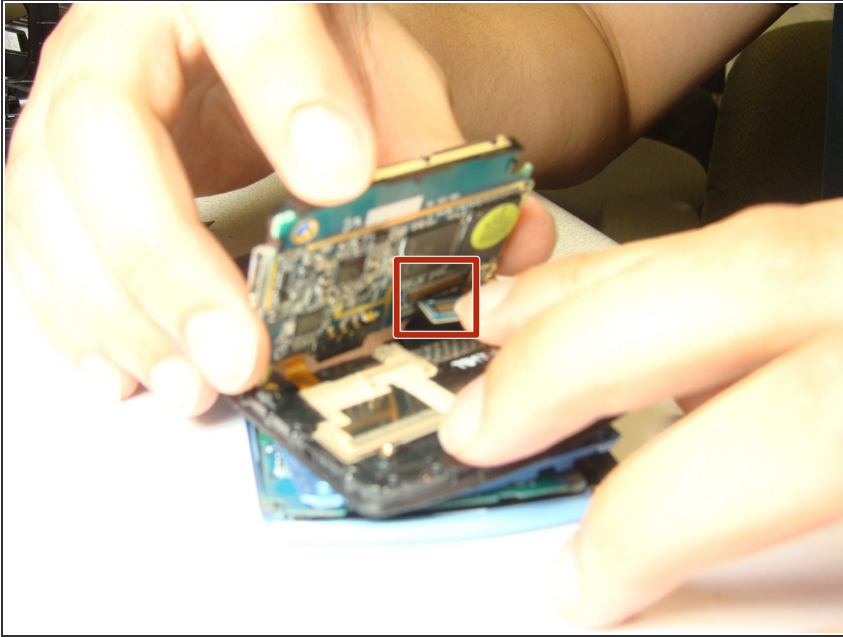
Step 8



- Insert the flat-head screwdriver into the crevice.
- Slide the flat-head screwdriver and dislodge the snap-ons beneath the crevice.

⚠ Be careful not to rip the band.

Step 9



- Use your hands to remove both the phone buses from the linkages and remove the motherboard.

To reassemble your device, follow these instructions in reverse order.