



Watch Battery Replacement

This guide will show you how to replace a watch battery and will also explain how to preserve the life of your battery.

Written By: TIMONTE HUNTER



INTRODUCTION

I am going to show you how to replace your watch battery and show you how to preserve the life of your new watch battery.



TOOLS:

- [Flathead 3/32" or 2.5 mm Screwdriver](#) (1)
-

Step 1 — Battery



- For this project you will need the watch you are replacing the battery on, the new battery and a mini flat head screwdriver.

Step 2



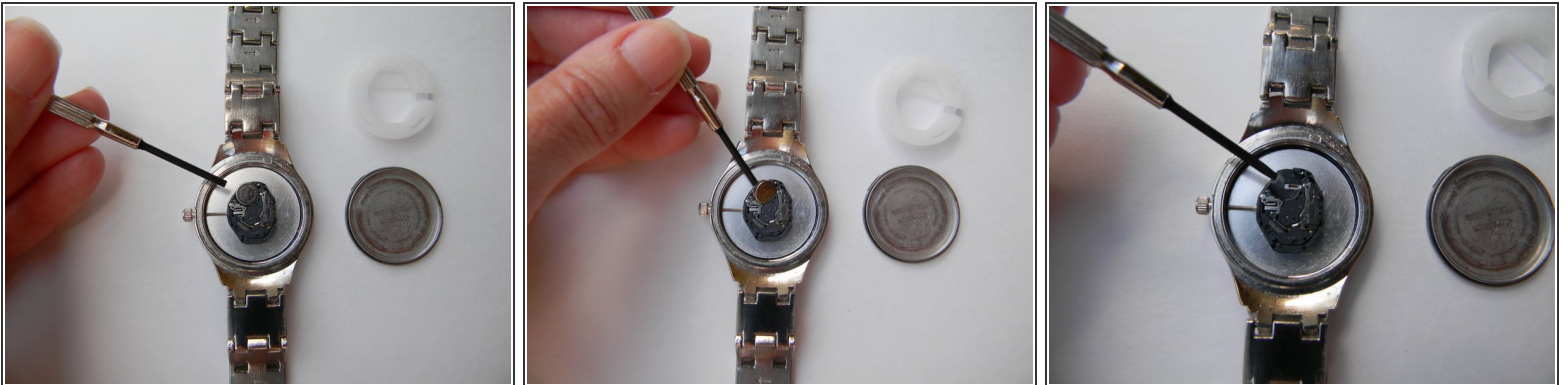
- You will need to take the back of the watch off. To do this you will turn the watch over to the back side and look carefully for a small groove opening. This is where you will use the mini flat head screwdriver. Insert the flat head screwdriver into the groove and pop the back off of the watch.

Step 3



- Take the white plastic ring out of the watch. You can use the mini flat head screwdriver or your finger to pull it out.

Step 4



- Take the old battery out of the watch. You can use the mini flat head screwdriver to do this.

Step 5



- Put the new battery in watch. Use your fingers to insert the new battery.

Step 6



- Use your fingers to insert the plastic white ring back into the watch.

Step 7



- Put the back of the watch on using your fingers. Press down so that you hear a snap to ensure the back is on properly.

Step 8



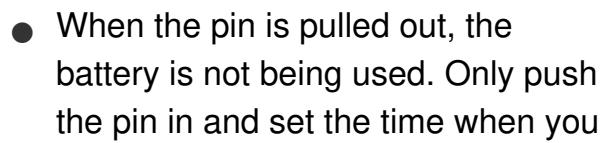
- You are all done and can now set the time on your watch.

Step 9



- When you are not using the watch, pull the pin out to stop the watch from running

Step 10



are using the watch. This will
preserve the life of your new battery.

To reassemble your device, follow these instructions in reverse order.