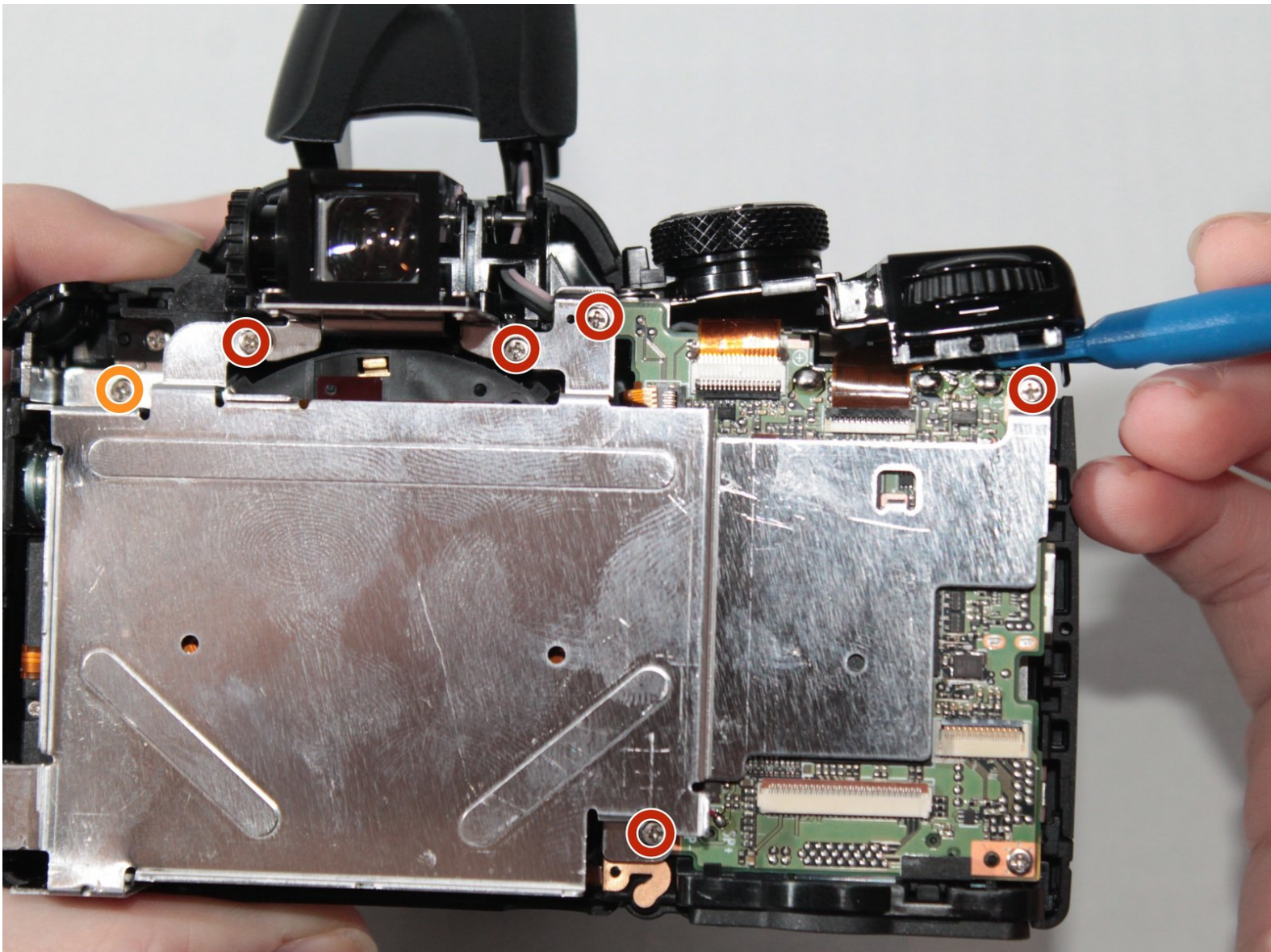




Nikon Coolpix P530 LCD Bracket Replacement

This is a step by step guide for removing the LCD bracket of the Nikon Coolpix P530 camera.

Written By: Alan Weihe



INTRODUCTION

A broken LCD bracket could affect the placement of the LCD screen. This guide will show the replacement procedure for the LCD bracket. This guide also serves as a prerequisite for replacing the CCD sensor and the zoom lens unit.



TOOLS:

- [iFixit Opening Tools](#) (1)
- [Phillips #000 Screwdriver](#) (1)
- [Tweezers](#) (1)



PARTS:

- [EN-EL5](#) (1)

Step 1 — Battery



- Identify the battery chamber found at the bottom of the device.
- ☑ Ensure the camera is turned off before conducting any maintenance on the device.

Step 2



- Slide the switch to the left to open the battery chamber using your fingertip or plastic opening tools.
- The spring loaded battery chamber door will swing open after the switch is moved.

Step 3



- Depress the yellow spring loaded tab holding the battery in place using your fingertip or plastic opening tools.
- After the yellow tab is depressed, the battery should partially eject from the camera.

Step 4



- Gently remove the battery from the chamber.

Step 5 — Back Cover



- Remove the six 4mm screws highlighted in red with the Phillips #000 screwdriver.
- Remove the 5mm screw highlighted in orange with the Phillips #000 screwdriver.

Step 6




- Pop up the camera flash using the button below the lightning bolt on the left side of the camera.
- Identify the small notch below the camera flash where the body of the camera and the back cover join.
- Use plastic opening tools to pry the darker plastic piece under the camera flash from the lighter plastic camera body.

Step 7




- Gently pry with a plastic opening tool around the perimeter of the camera.

 The plastic HDMI cover can become loose and fall off during this step. Once the back cover is free from the camera you may remove this piece to store in a safe place.

Step 8



- Gently lift the back cover away from the camera body.
- A gold ribbon cable will join the back cover of the camera to the internal electronic components. Be careful not to remove the back cover without removing the cable since this part can easily break.
- To remove the ribbon cable, gently pull the connector from the camera's internal electronic components using a pair of tweezers.

 Flip the orange bar securing the ribbon cable upwards to allow for safe removal.

Step 9



- After the ribbon cable is removed from the camera body, the cover can be completely removed.

Step 10 — LCD



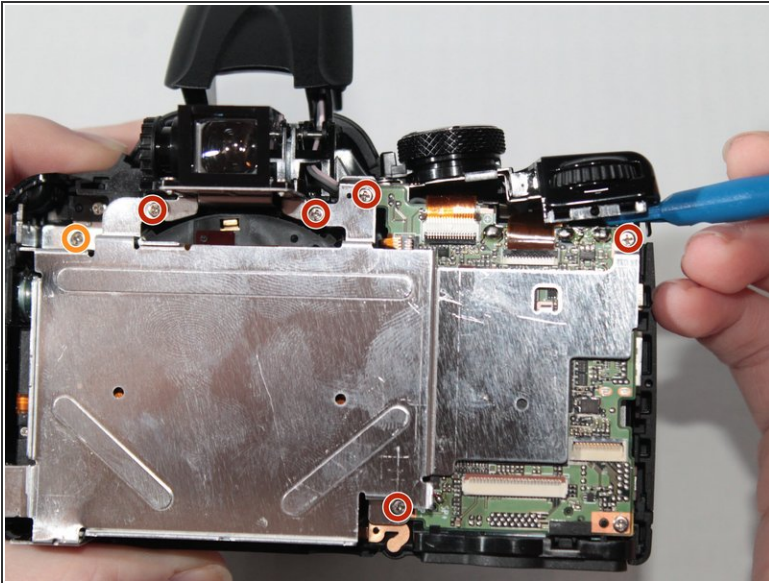
- Lift the LCD screen upwards.

Step 11



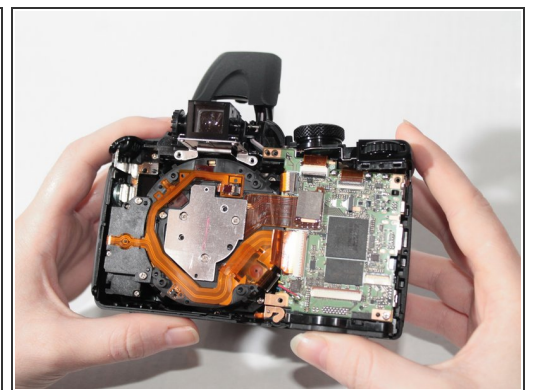
- Tilt the screen towards the ribbon cable.
 - Remove the ribbon cable by gently pulling the cable away from the motherboard using tweezers.
- ⚠ Flip the orange bar securing the ribbon cable upwards to allow for safe removal.

Step 12 — LCD Bracket



- Remove the six 4mm screws highlighted in red using the Philips #000 screwdriver.
- Remove the 6mm screw highlighted in orange using the Philips #000 screwdriver.
- ⓘ One of the 4mm screws is on the exterior of the device.

Step 13



- Lift and remove the LCD mounting bracket to expose underlying hardware.

To reassemble your device, follow these instructions in reverse order.