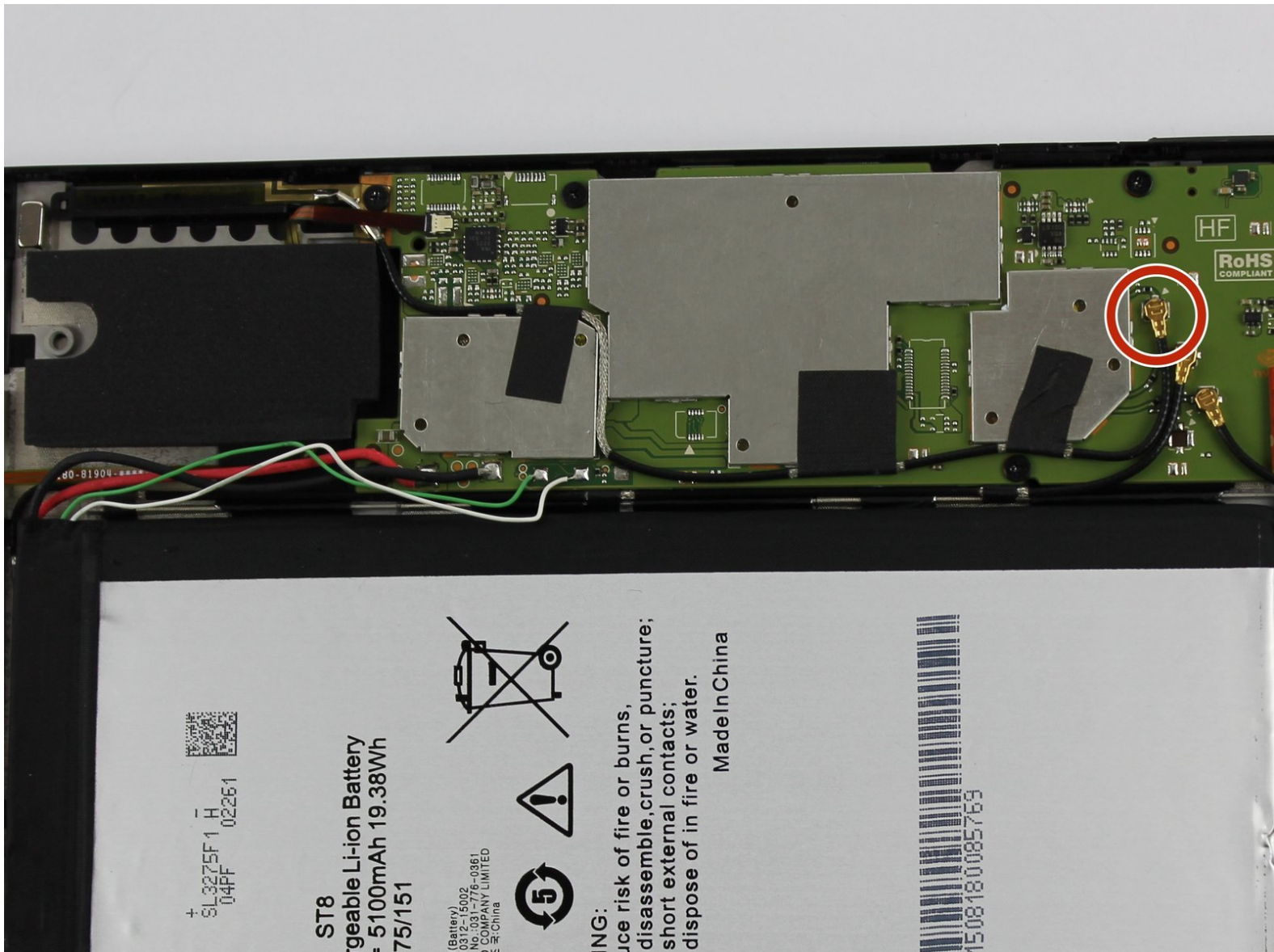




Nvidia Shield Tablet K1 WIFI Antenna Replacement

This is a guide for the removal and replacement of the WIFI Antenna.

Written By: James Upchurch





TOOLS:

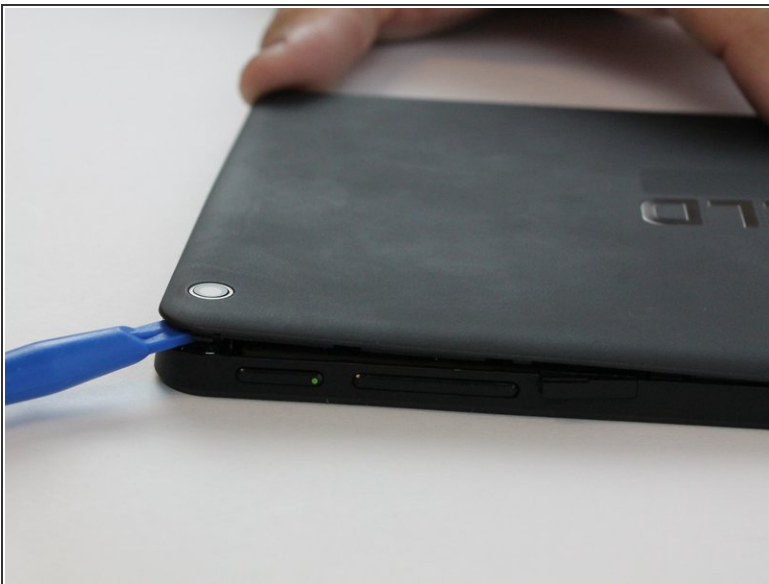
- [iFixit Opening Tools](#) (1)
 - [Tweezers](#) (1)
-

Step 1 — Back Panel



- Starting at the Micro SD Card Slot and using the blue plastic opening tool, begin to maneuver the tool around the edges while applying light pressure to lift the panel upwards.

Step 2

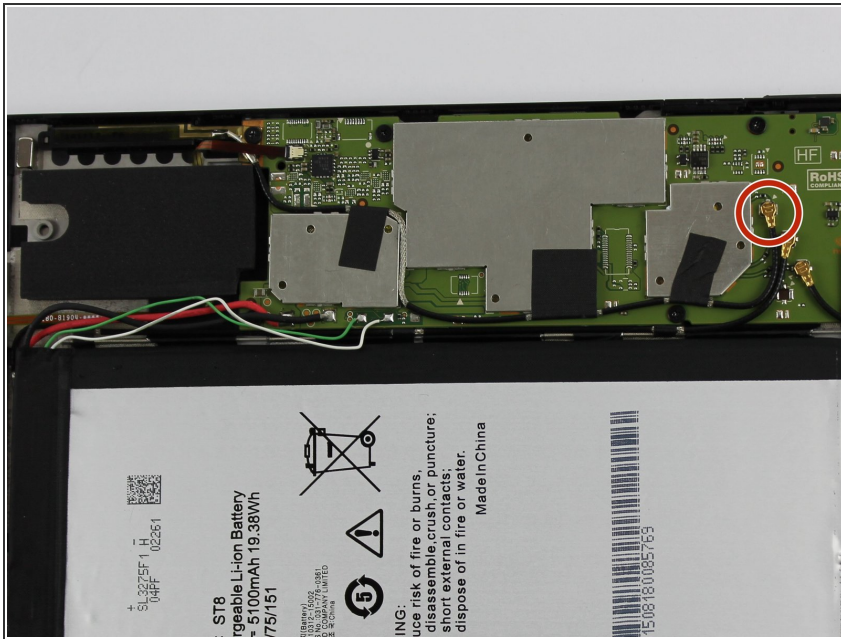


- ☑ There are clips holding the back panel to the rest of the case. You must apply some force to lift the back panel off.

- Continue lifting up the panel all the way around the edges of the tablet.
- Once all of the panel clips are unfastened, gently remove the back panel.

This document was generated on 2020-11-16 09:50:36 AM (MST).

Step 3 — WIFI Antenna



- Use the angled tweezers to disconnect the black power cable from the motherboard. The Cable should pop up from its slot when pulled.
- ☑ Make sure you disconnect the right cables. There are three of these.

Step 4



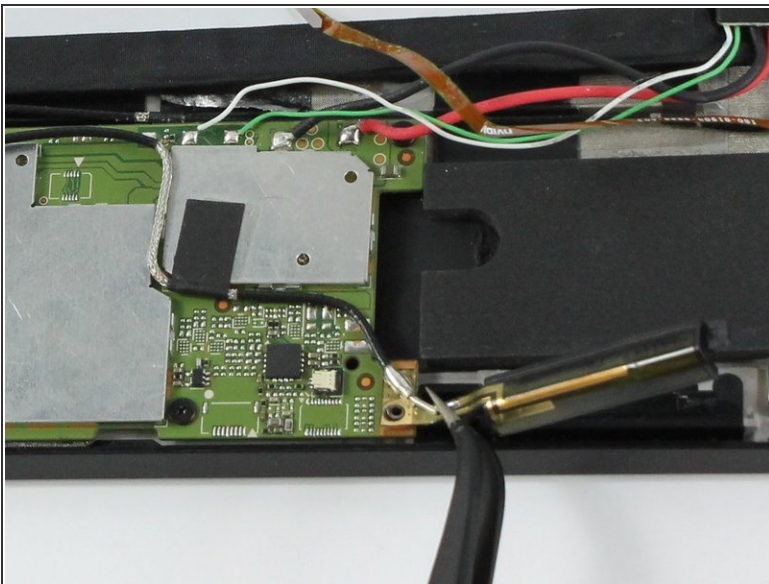
- Remove the screw adjacent to the WIFI Antenna using the J000 Philips head screw-driver.
- ❗ Screw description: short black screw 20 mm length and 30 mm diameter.

Step 5



- Using the angled tweezers, begin removing the antenna from the device.

Step 6



- The black plastic piece of the antenna is attached to a copper colored film which can be pulled up using the tweezers.
- The antenna should now be free from the device.

To reassemble your device, follow these instructions in reverse order.