



WowWee MiP Robot LED Light Replacement

The LED light on the MiP indicates what mode...

Written By: Courtney



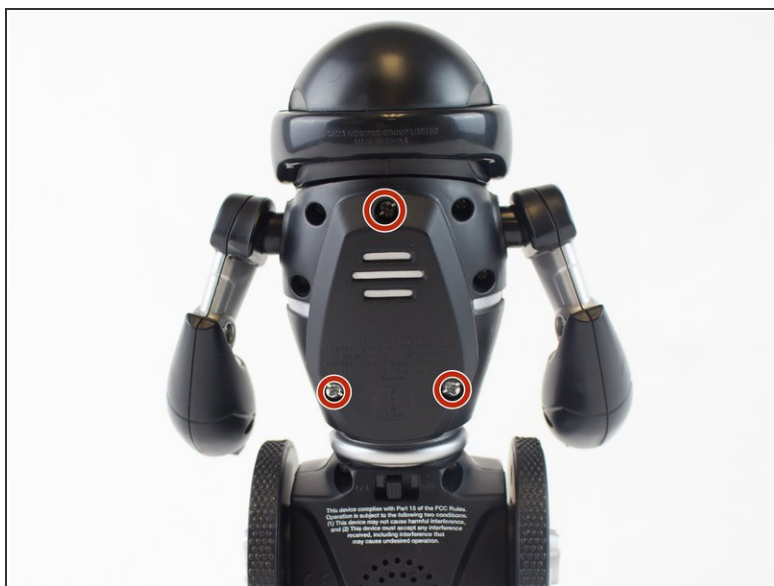
INTRODUCTION

The LED light on the MiP indicates what mode the robot is in. If this light is malfunctioning, using the MiP is difficult.

TOOLS:

- [64 Bit Driver Kit](#) (1)
 - [Metal Spudger](#) (1)
 - [Phillips #1 Screwdriver](#) (1)
 - [Phillips #2 Screwdriver](#) (1)
 - [Tweezers](#) (1)
-

Step 1 — Battery



- Remove the three 12.0 mm Phillips # 2 screws from the battery cover.

Step 2



- Carefully pull the battery pack from the robot.
- Remove the batteries from the battery pack.

Step 3 — Wheel



- Use a metal spudger to carefully pry off the hubcap without marring the plastic wheel or hubcap.
- ⓘ This plastic material is not replaceable. Any damage will be noticeable.

Step 4



- Remove the 12.0 mm Phillips #2 screw.
- ⓘ Hold the wheel in place, or it will rotate as you attempt to remove the screw.

Step 5



- Pull the wheel off of the square axle.

⚠ Do not use excessive force while removing the wheel. Pulling too hard on the wheel can damage the axle.

Step 6 — WowWee MiP Robot Body Disassembly



- Remove the eight 9.3 mm Phillips #1 screws from the back of the robot.

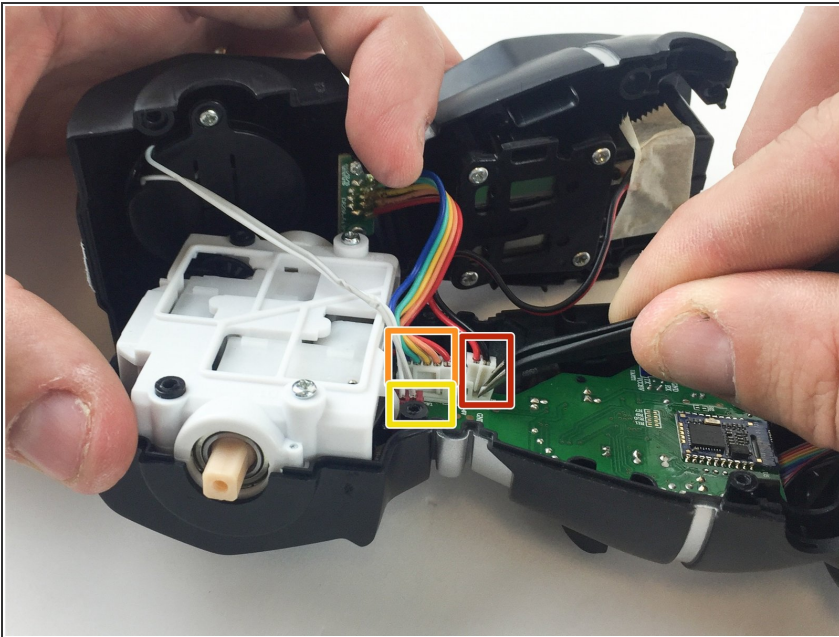
Step 7



- Remove the arms from the body.
- Carefully open the body compartment.

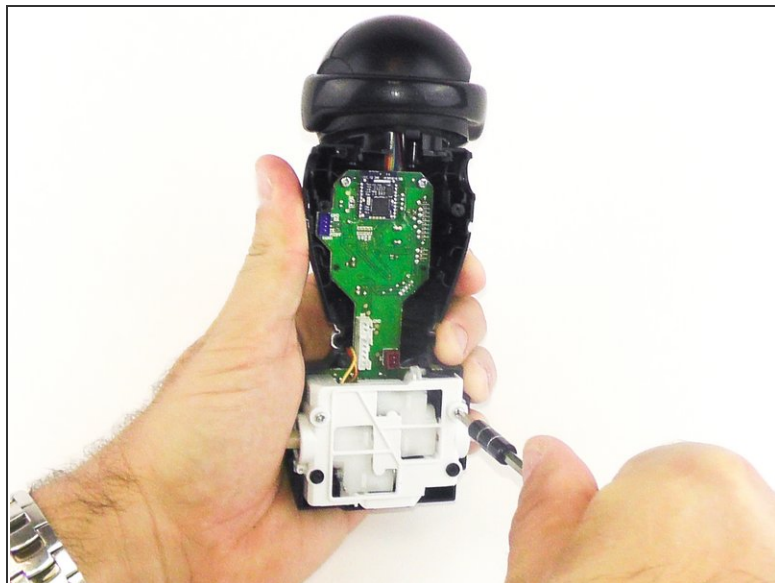
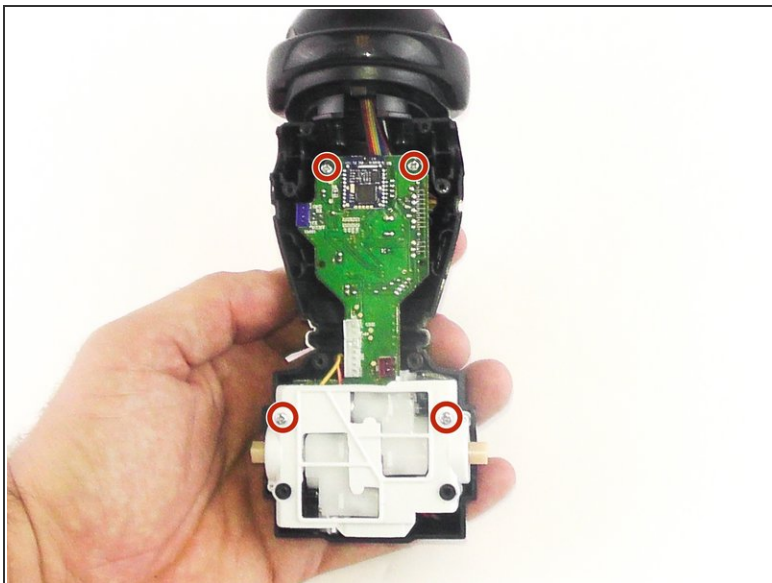
⚠ Open the compartment slowly. There are wires connecting the two body pieces together. If pulled too hard, the wires and/or the motherboard could be damaged.

Step 8



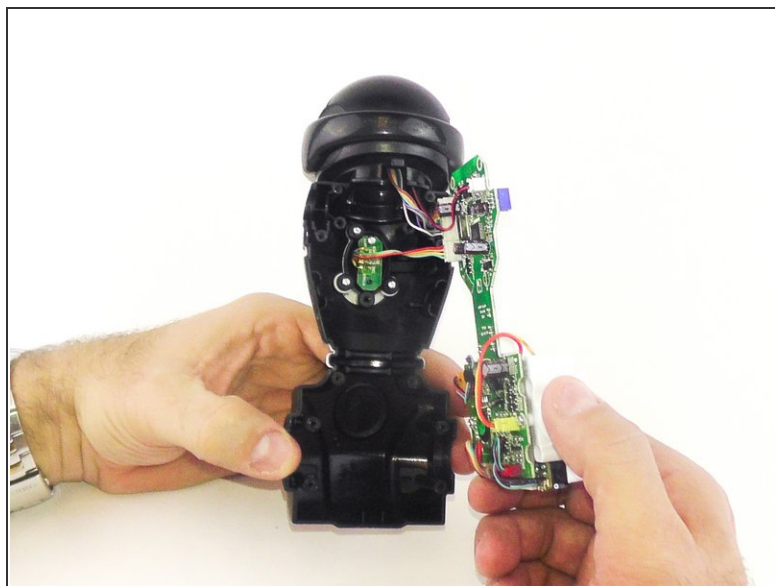
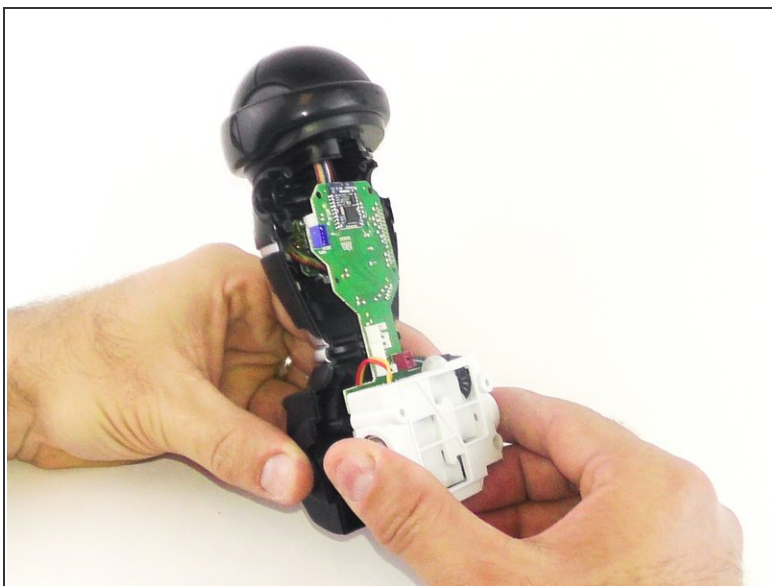
- Using precision tweezers, disconnect the following three bundles of wires:
- Connecting the battery pack to the motherboard.
- Connecting the power switch to the motherboard.
- Connecting the speaker to the motherboard.

Step 9 — LED Light



- Remove the four 7.5mm Phillips #1 screws.

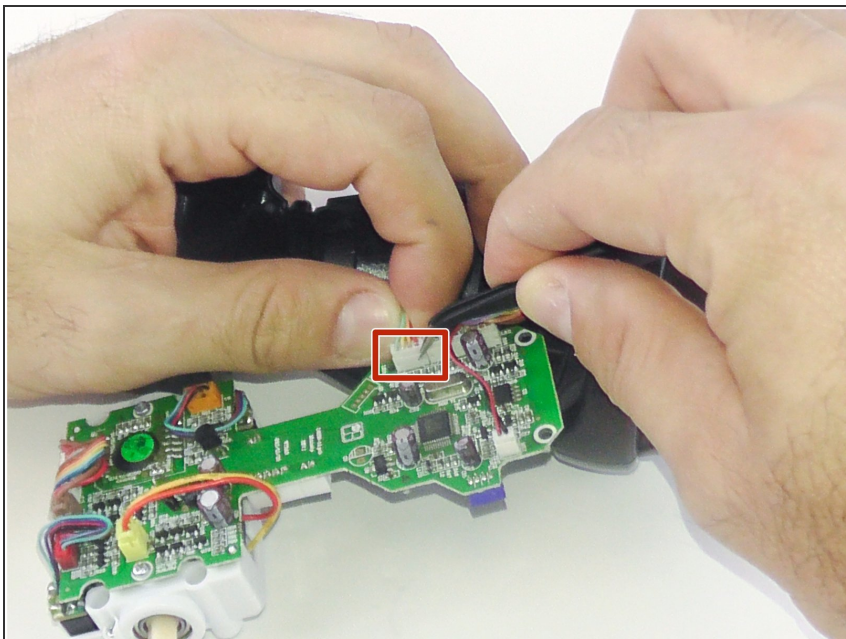
Step 10



- Carefully pull the motor and motherboard assembly straight out from the base.

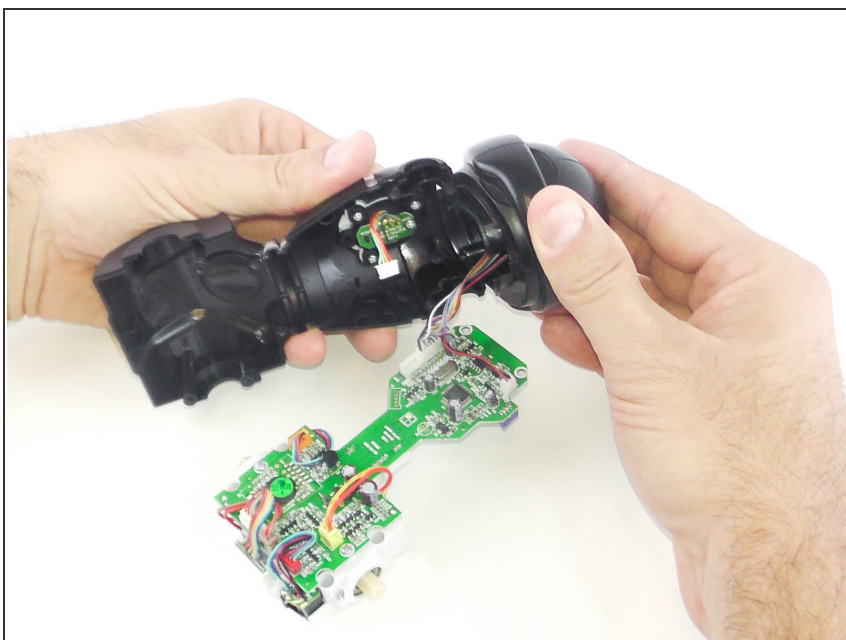
⚠ Be careful not to break the plastic rods that go through the motor assembly and are connect to the shell.

Step 11



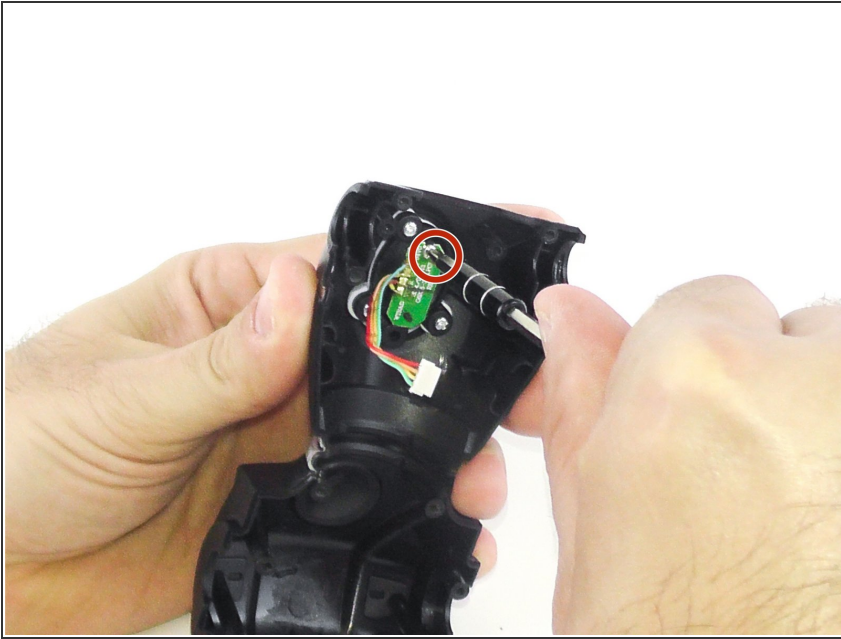
- Use the precision tweezers to unplug the bundle of wires.

Step 12



- Slide the head back to separate it from the body.
- ⓘ The motherboard does not need to be separated from the head to replace the LED light.

Step 13



- Remove the 7.5mm Phillips #1 screw.
- ⓘ The LED light is soldered to the small circuit board.

To reassemble your device, follow these instructions in reverse order.