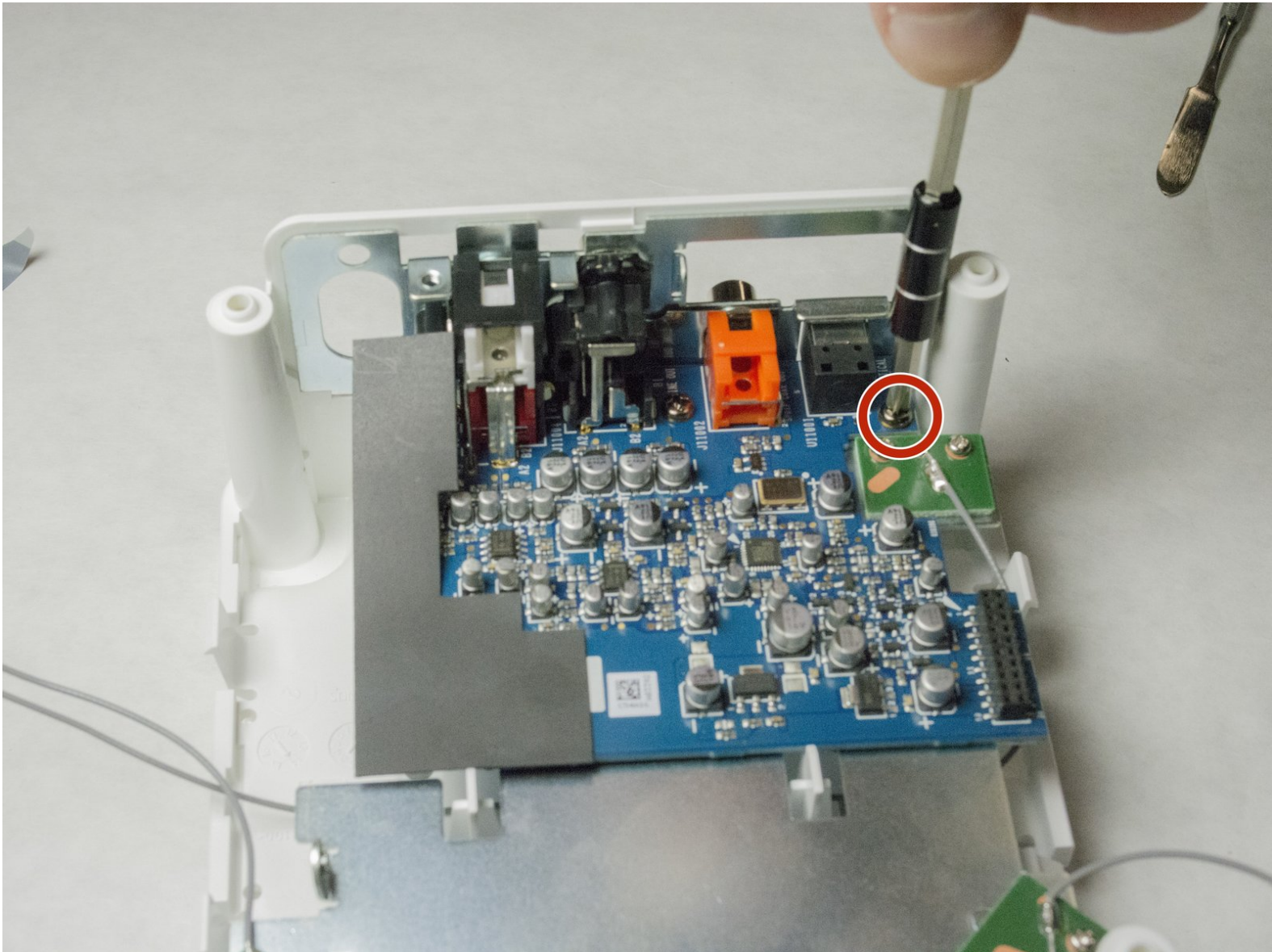




# Sonos Connect Bottom Motherboard Replacement

This guide will show the necessary steps to replace the bottom motherboard.

Written By: Clark Snyder



## INTRODUCTION

There are two boards for the device, a green top level and a blue lower level. This guide will show the steps to replace the bottom motherboard.

Metal spudgers and similar pry tools can puncture an unprotected battery, potentially causing a fire. When working with electronics, it's important to choose a tool that's ESD-safe to avoid accidental damage to the device. The metal spudger is great when you need serious prying power, but the regular black nylon spudger or a plastic opening tool should be used whenever possible.




### TOOLS:

- [Phillips #0 Screwdriver](#) (1)
  - [Spudger](#) (1)
  - [Screwdriver](#) (1)
  - [Phillips #1 Screwdriver](#) (1)
-

## Step 1 — WIFI Card

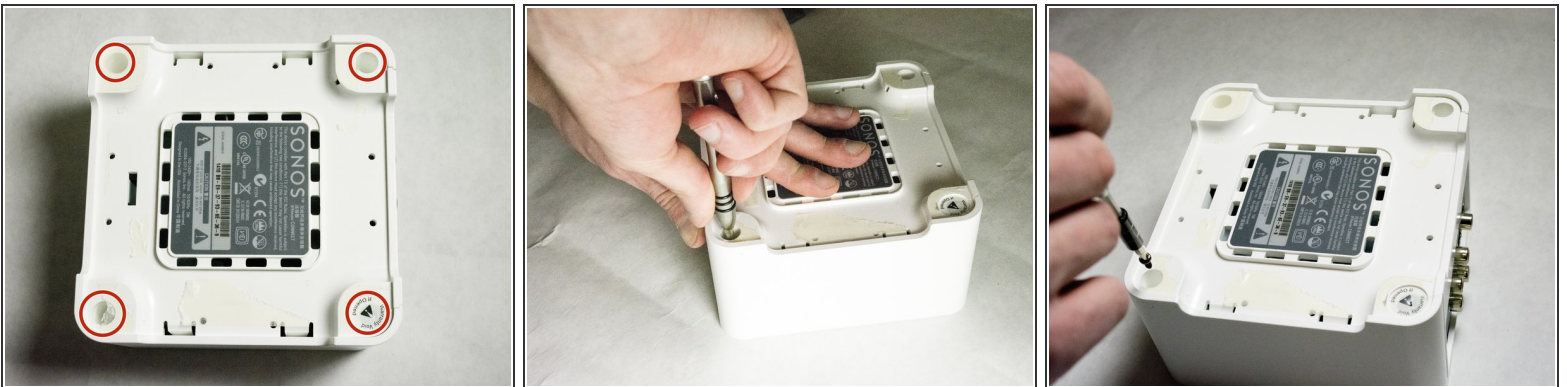


- Start by using a spudger or plastic opening tool to remove the bottom cover.

 When working with electronics, it's important to choose a tool that's ESD-safe to avoid accidental damage to the device. The regular black nylon spudger or a plastic opening tool should be used whenever possible.

- Once enough of the glue is removed, peel the cover off by hand,

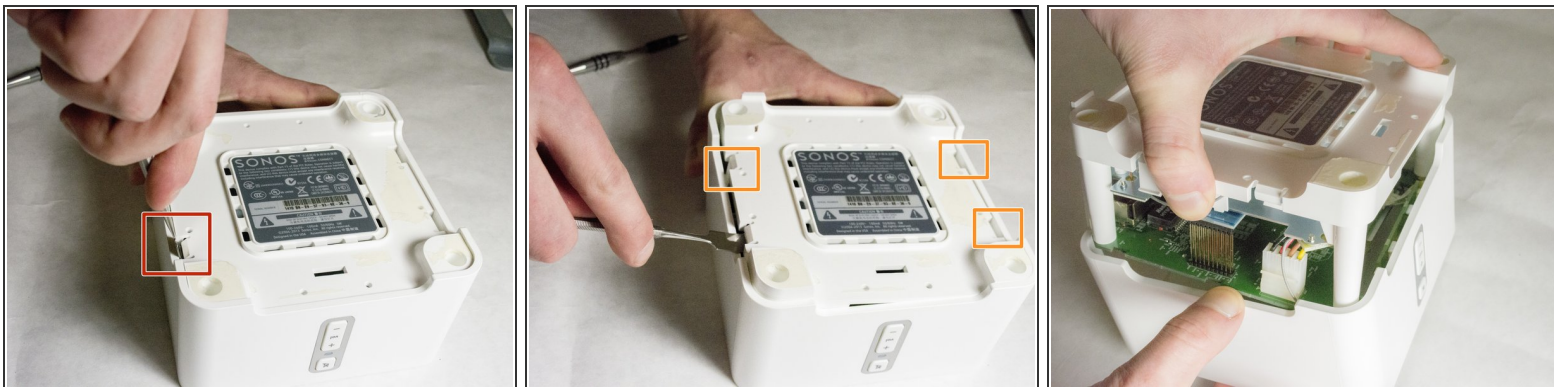
## Step 2



- Remove the four 7.5mm length Philips head screws under the rubber cover.

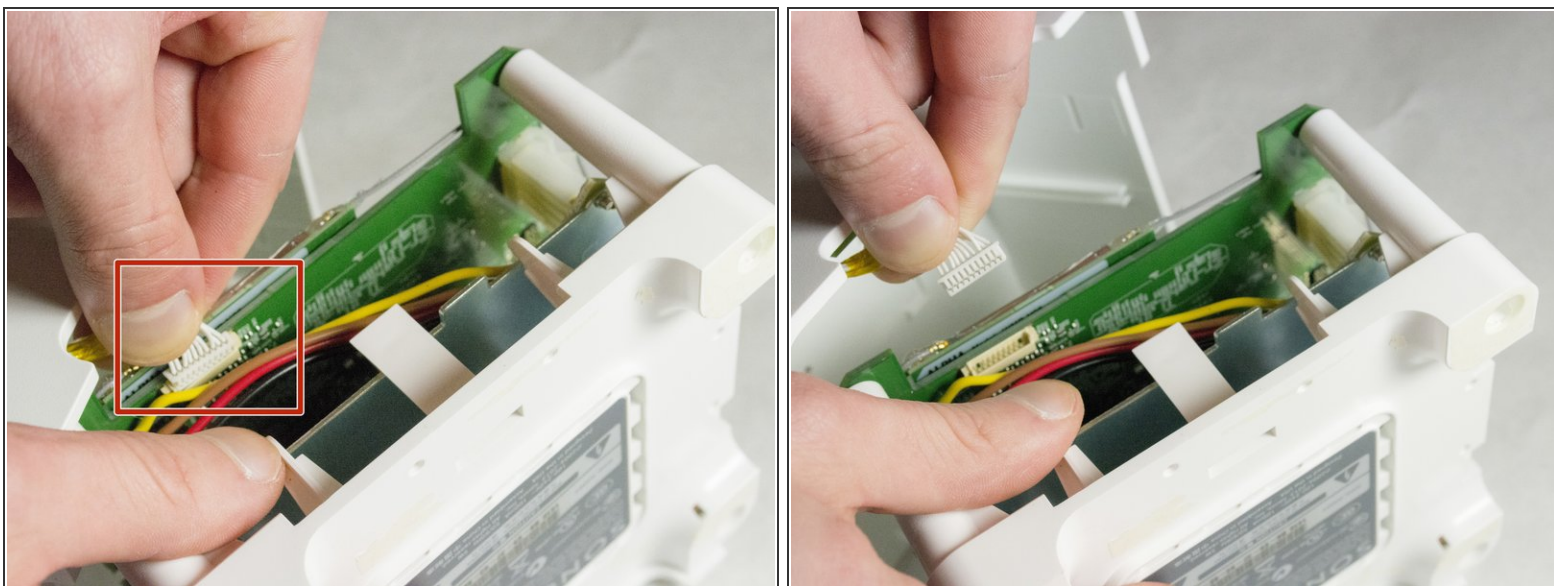


## Step 3



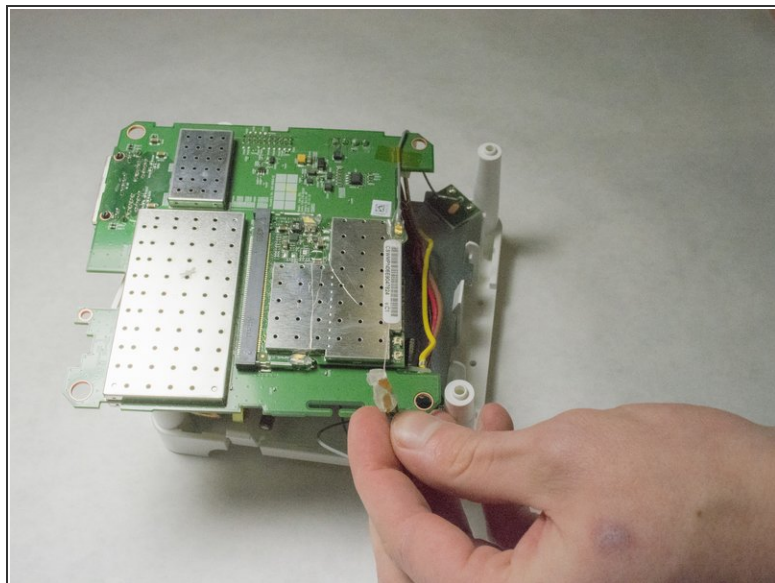
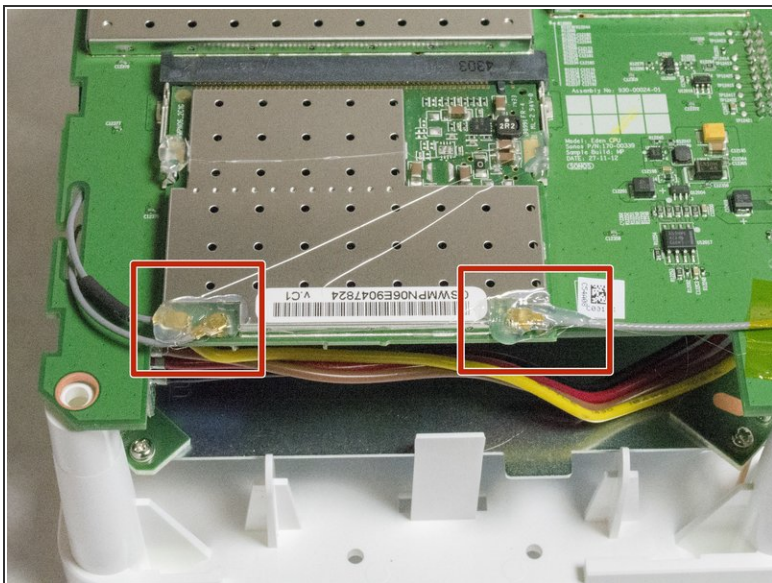
- Use a nylon spudger to unsnap the bottom from the sides.
- Pry until the remaining three points are unsnapped.
- Once unsnapped, lift the cover.

## Step 4



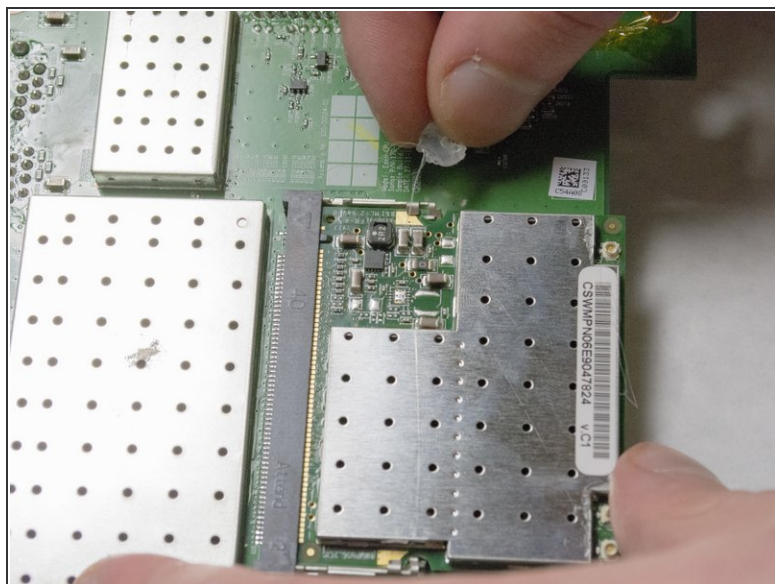
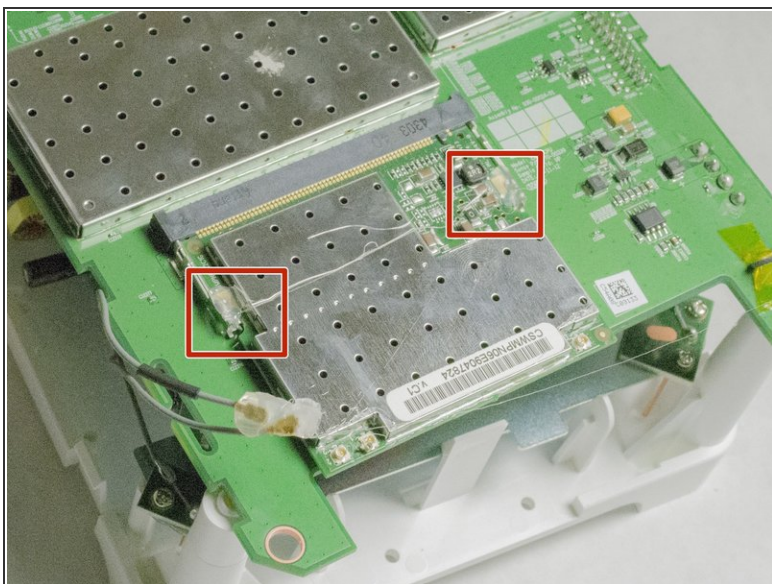
- Remove the connection for the front buttons to fully remove the cover.

## Step 5



- Use a plastic opening tool or spudger to remove the adhesive covering the the WIFI connectors.
- Gently pull the wires at the connection point to disconnect them from the motherboard.

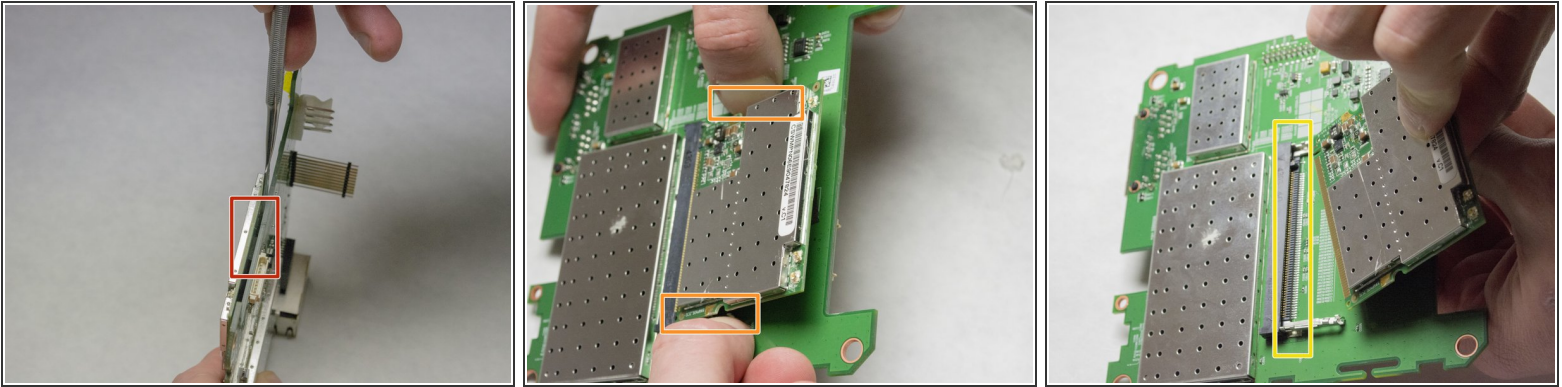
## Step 6



- Remove the two pieces of glue holding the WIFI card in place.

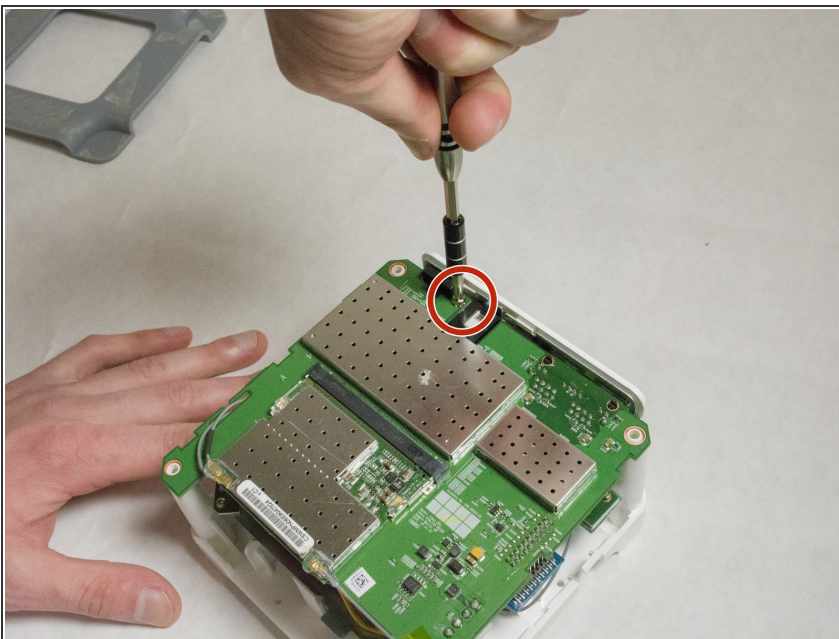


## Step 7



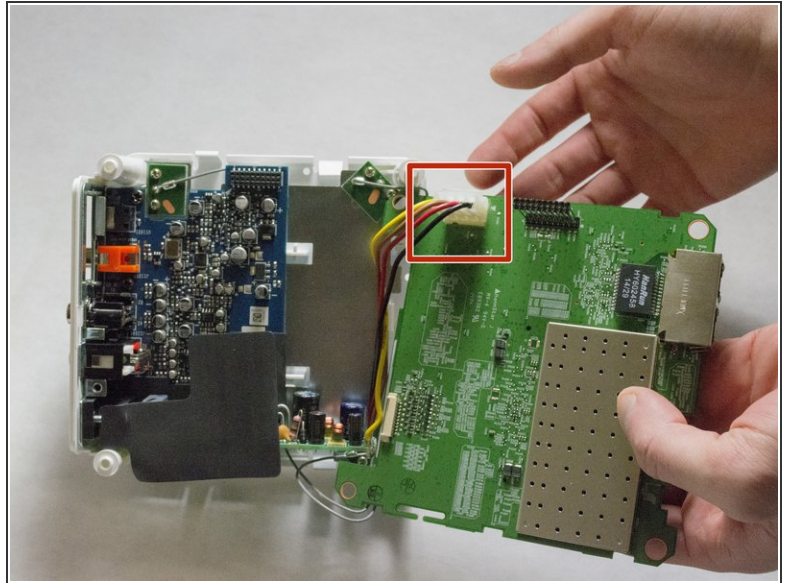
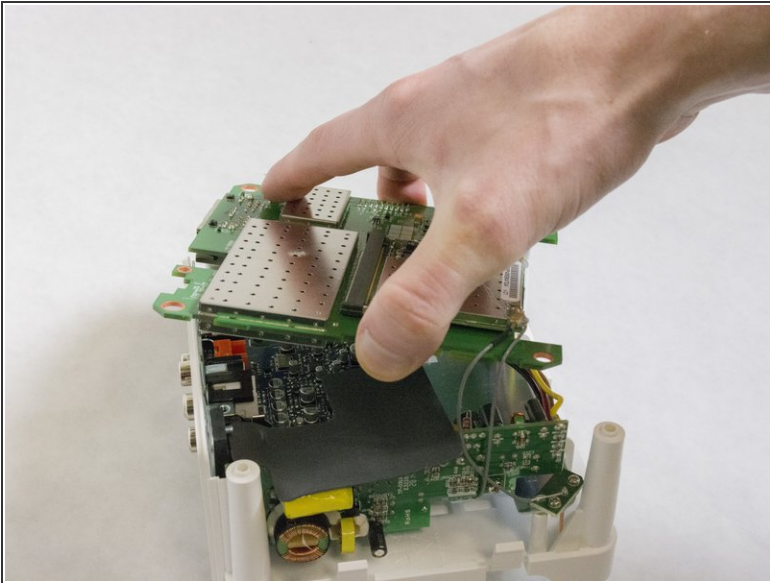
- Scrape the glued pad underneath the WIFI card to separate the card from the board.
  - Push apart the two clips holding the WIFI card in the connection.
  - Pull the WIFI card out of the connection.
- ☒ When putting the new WIFI card in, put the card in the connector first, then push downward until it clicks.

## Step 8 — Top Motherboard



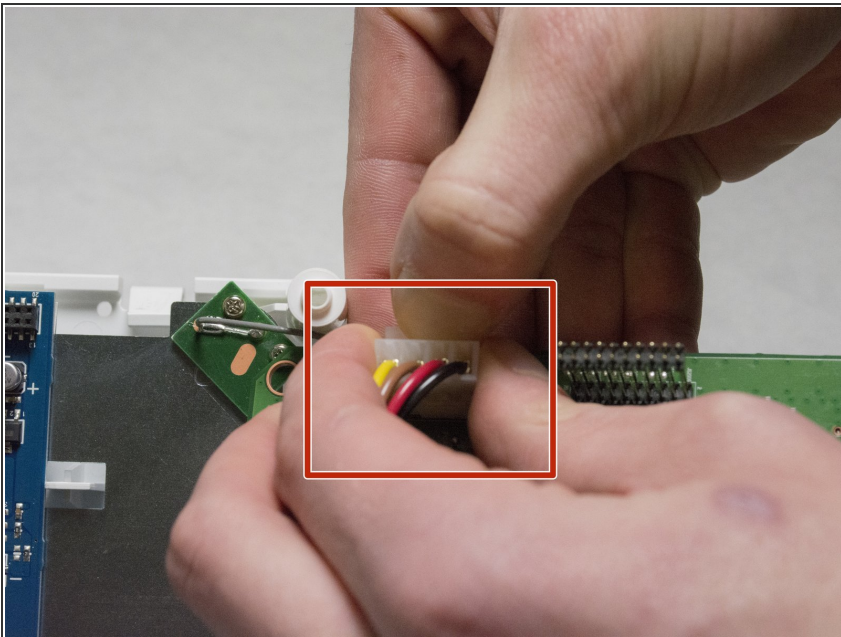
- Remove the 7mm length Phillips screw holding the board in place.

## Step 9



- Flip the board over to access the Molex Cable.

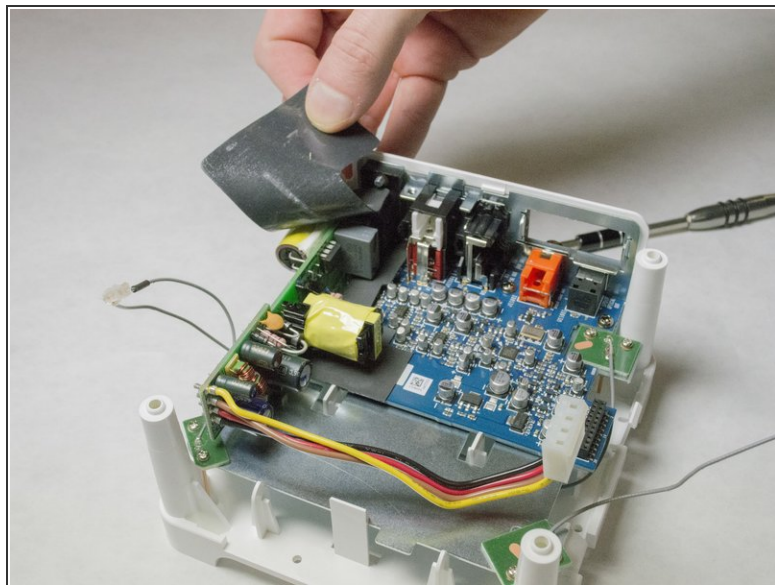
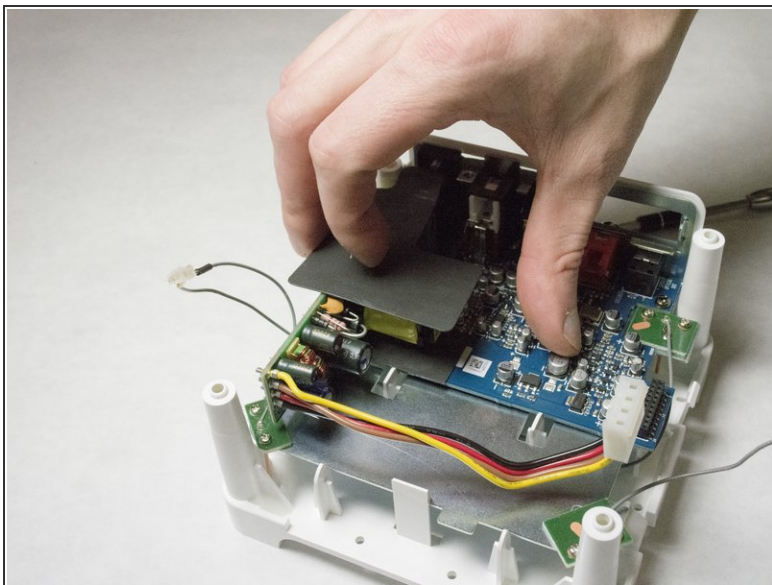
## Step 10



- Disconnect the Molex Cable from the top motherboard.

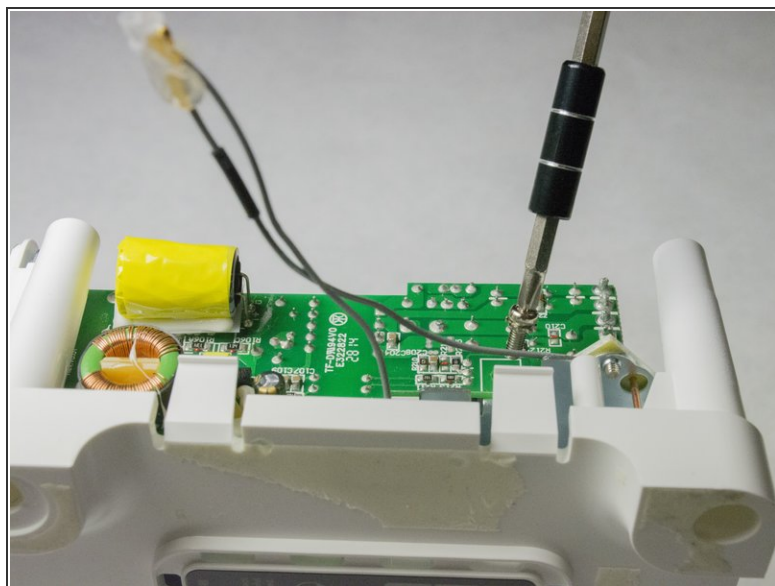
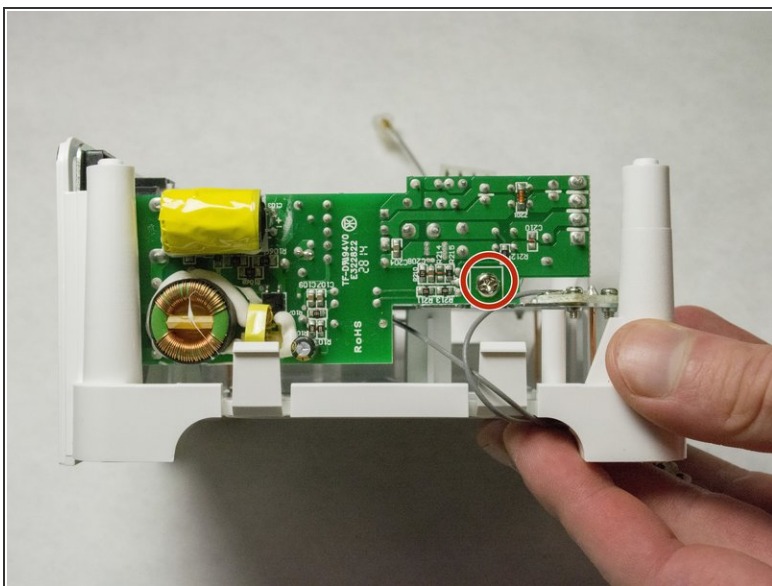


## Step 11 — Internal Power Supply



- Remove foam protective insulator from the bottom board.

## Step 12



- Picture shows the side of the device.
- Remove the 7mm length Phillips screw from the power supply motherboard.

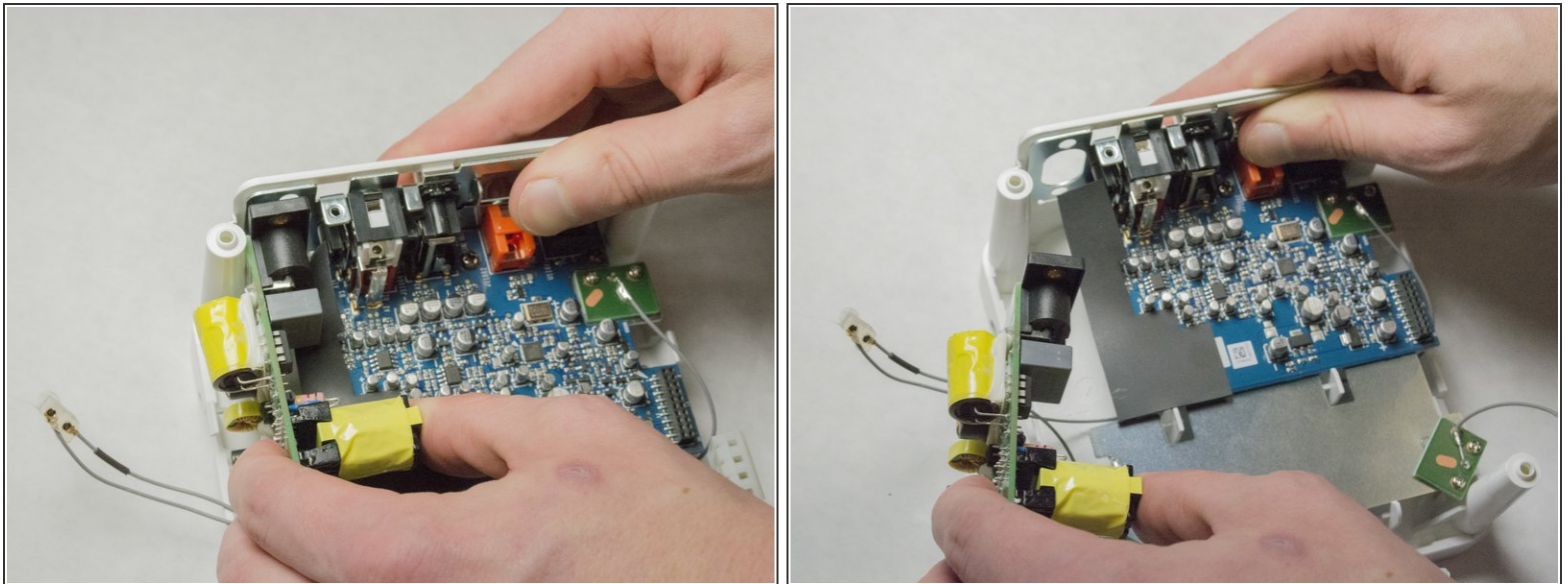


## Step 13



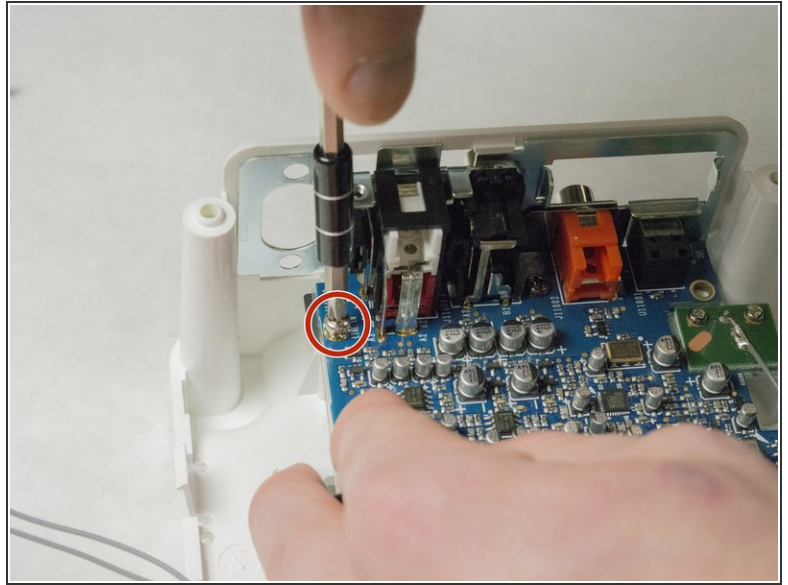
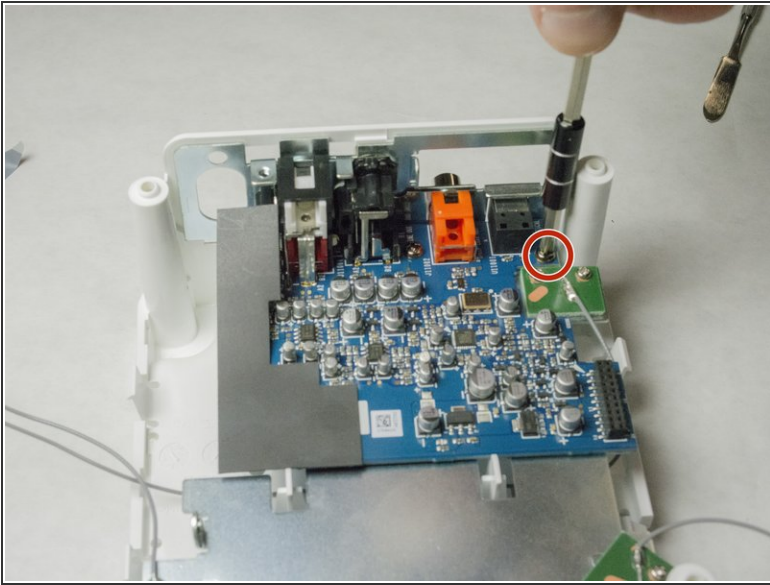
- Remove the adhesive backed rear label by using a spudger.
- Remove the two 8mm length screws as shown.

## Step 14



- Pull the power supply out of the back of the device.

## Step 15 — Bottom Motherboard



- Remove the two 7.5mm length screws on the top of the board.

## Step 16

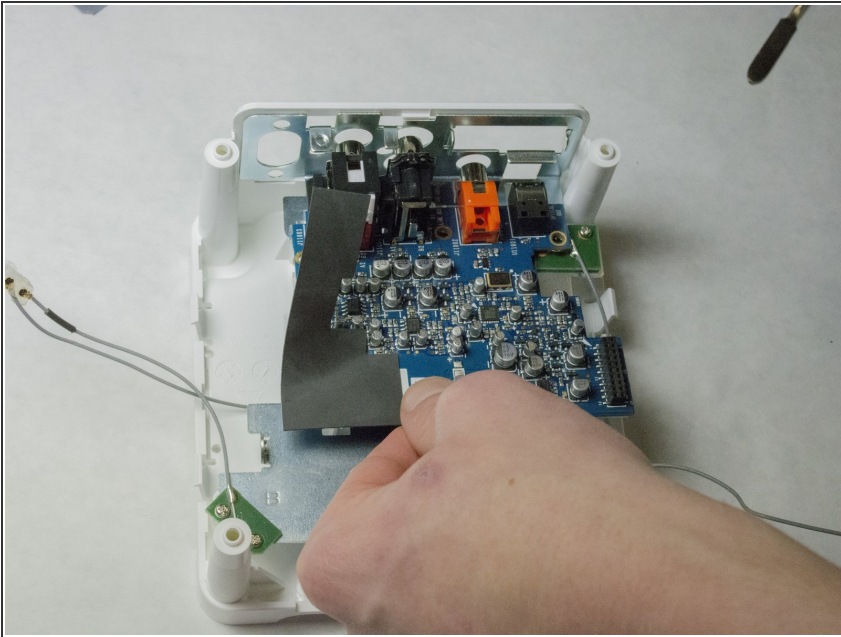


- Remove the other two 8mm length screws on the back of the device. You might have already removed



the screws for the power supply,  
and that's OK!

## Step 17



- Slide the board out from the plastic casing.
- ⓘ You must pull the board out from back to front, because of the plugs on the back of the board.

To reassemble your device, follow these instructions in reverse order.