



Hamilton Beach 64650 Speed Level Replacement

The speed level is getting stuck and needs to be replaced

Written By: Gwen Davis



INTRODUCTION

This page will guide you through the replacement of the speed level on your Hamilton Beach Classic Stand Mixer 64650. This guide is helpful if you are experiencing any problems with your speed level adjustment.



TOOLS:

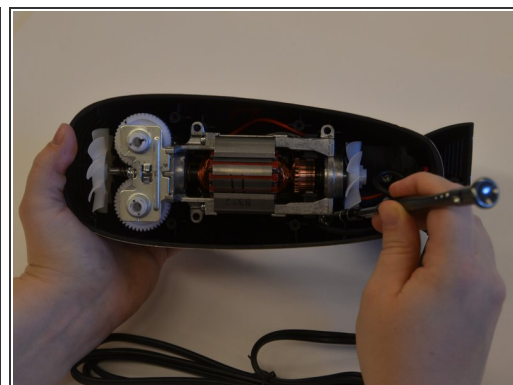
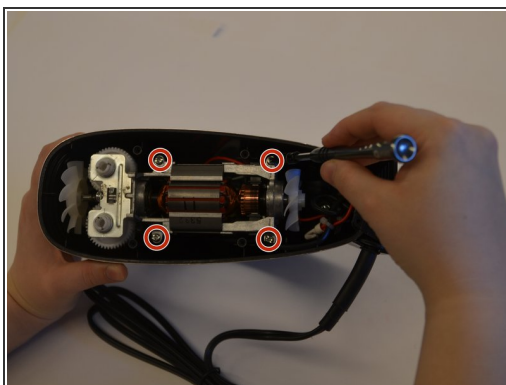
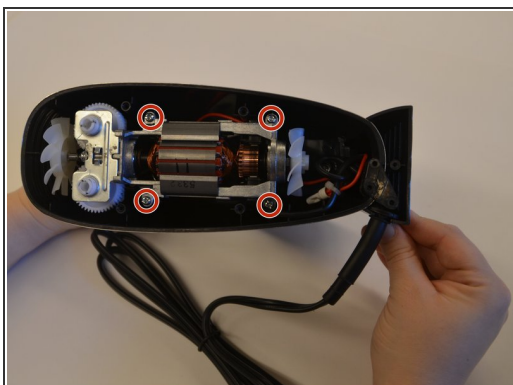
- [Phillips #2 Screwdriver](#) (1)
 - [Soldering Iron](#) (1)
 - [Solder](#) (1)
 - [iFixit Opening Tools](#) (1)
-

Step 1 — Motor



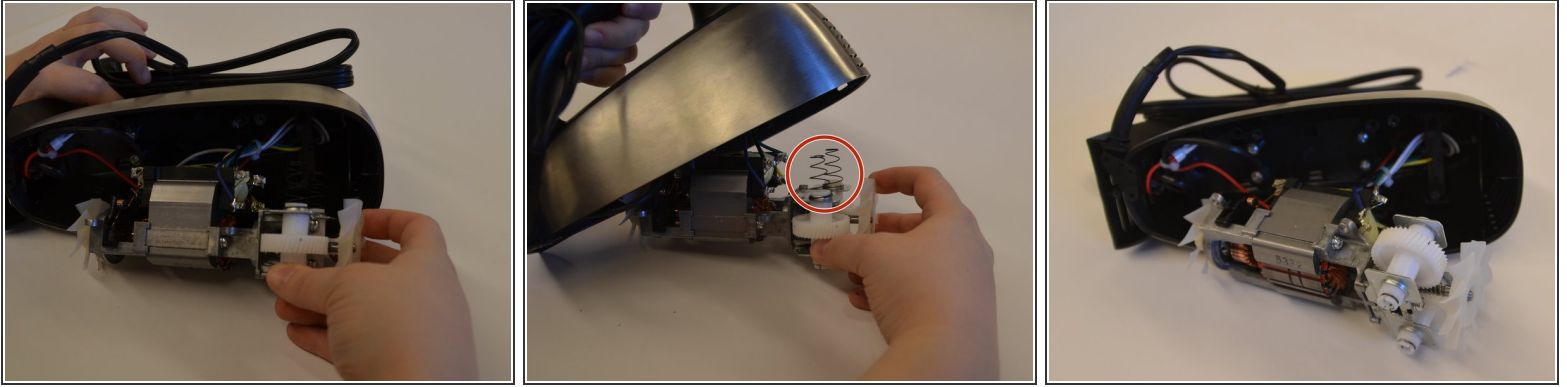
- Flip the handle on its side. Remove five 3.8 mm Philips #2 screws shown and set aside them aside.

Step 2



- Remove the four 8.6 mm Philips #2 screws securing the motor mount and place them aside.

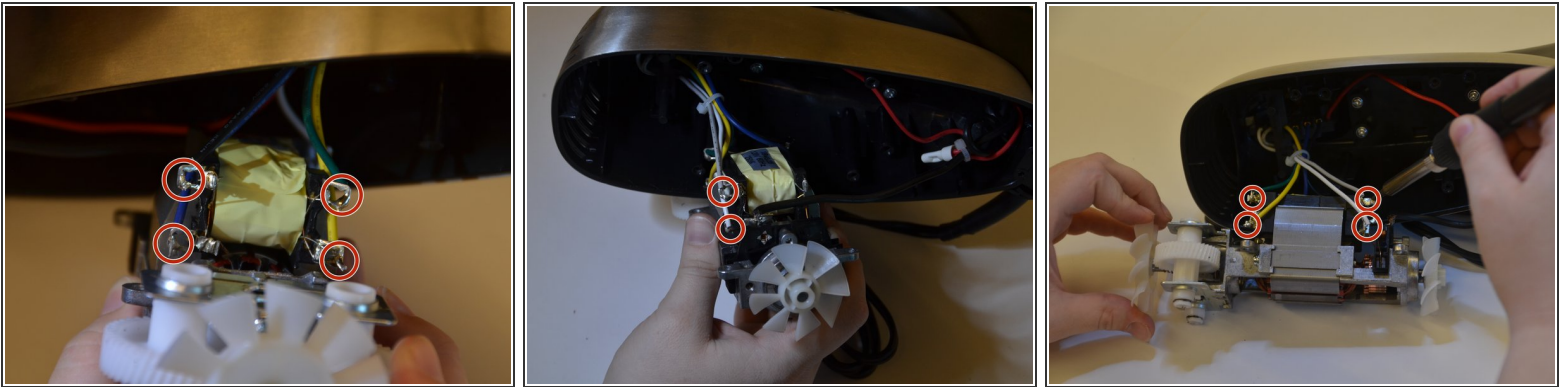
Step 3



- Carefully pull the motor block out of the case.
- Collect the two spring located on top of the white beater gears. The springs are held in place with compression, and may fall into the case when the motor is moved.

⚠ Handle the wires with care to ensure you do not break any of them.

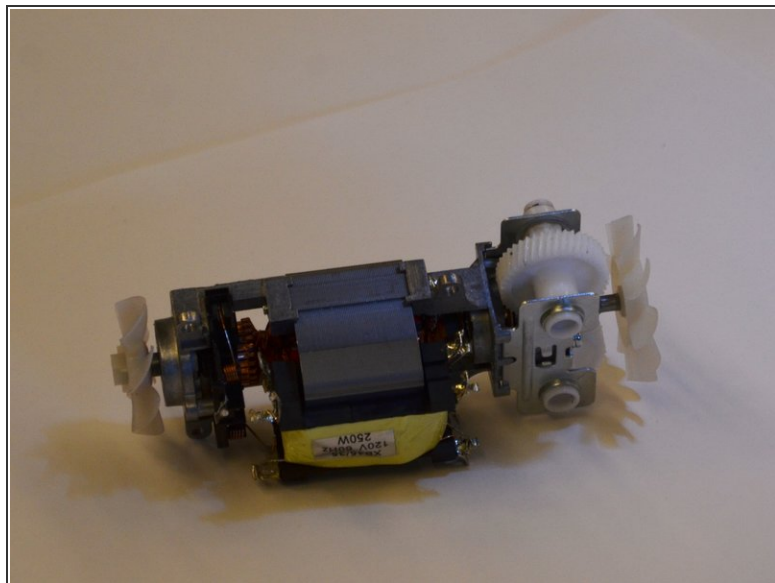
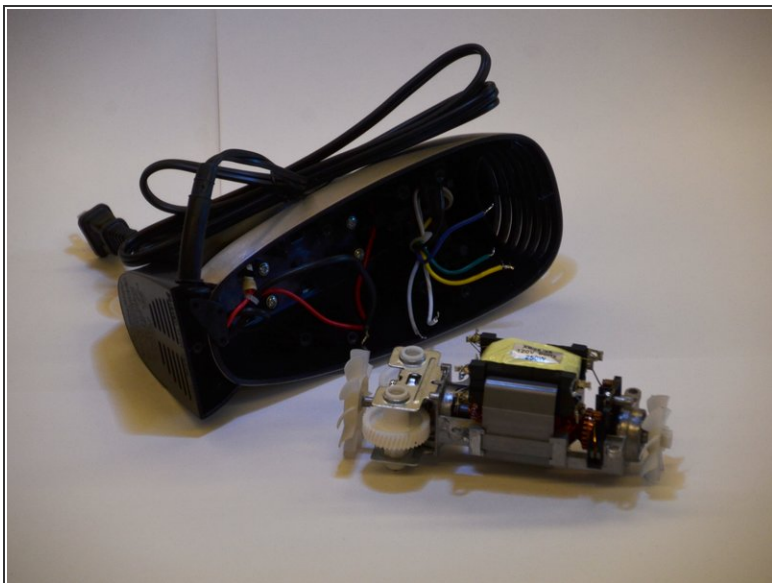
Step 4



- Desolder the six wires connected to the motor using [this guide](#).

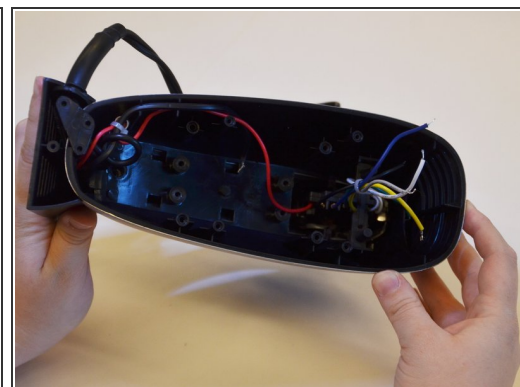
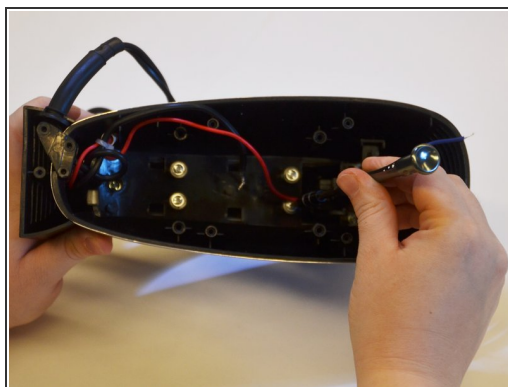
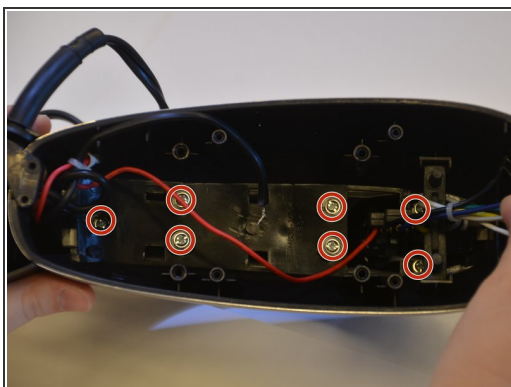
⚠ Make sure to note colors when you disconnect them and remember where to reconnect them later.

Step 5



- Once disconnected, the motor will slide out easily.

Step 6 — Speed Level



- Remove the seven 5.6 mm Philips #2 screws that attach the motor casing to the mixer handle and set them aside.

Step 7



- Use a plastic opening tool to take off the handle's cap by loosening both ends and then sliding the tool to the middle of the handle.

Step 8



- Remove the handle's cap carefully.

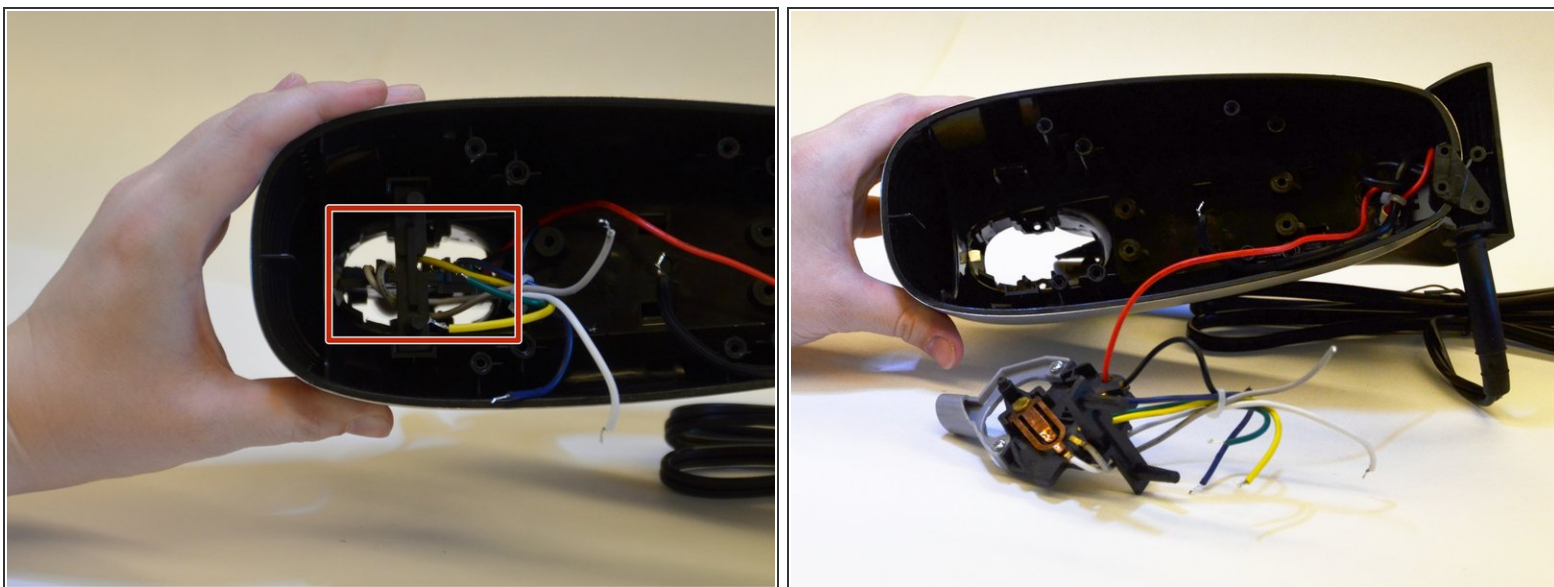
⚠ Watch out for the quick burst button, it likes to run away.

Step 9



- Slide the speed switch forward and lift upward off of the handle.

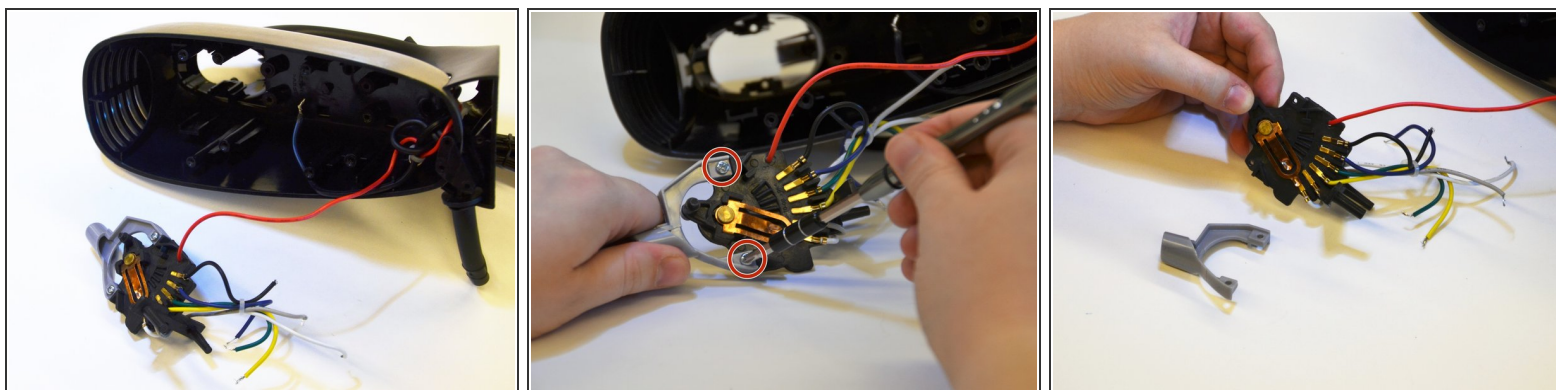
Step 10



- Remove speed level from the inside of the case by applying light pressure toward you.

⚠ Do not pull on the wires to remove the speed level.

Step 11



- Remove the beater release button from speed level by removing the two 1.3 mm Philips #2 screws.
- Replace the speed level assembly.

To reassemble your device, follow these instructions in reverse order.