



Hamilton Beach Power Cord Replacement

Power Cord Replacement

Written By: Gwen Davis



INTRODUCTION

This page will guide you through the replacement of the power cord on your Hamilton Beach Classic Stand Mixer 64650. This guide is helpful if you are experiencing any problems with turning on the mixer. If your device will not turn on despite all efforts, this is probably the best guide for you to follow!



TOOLS:

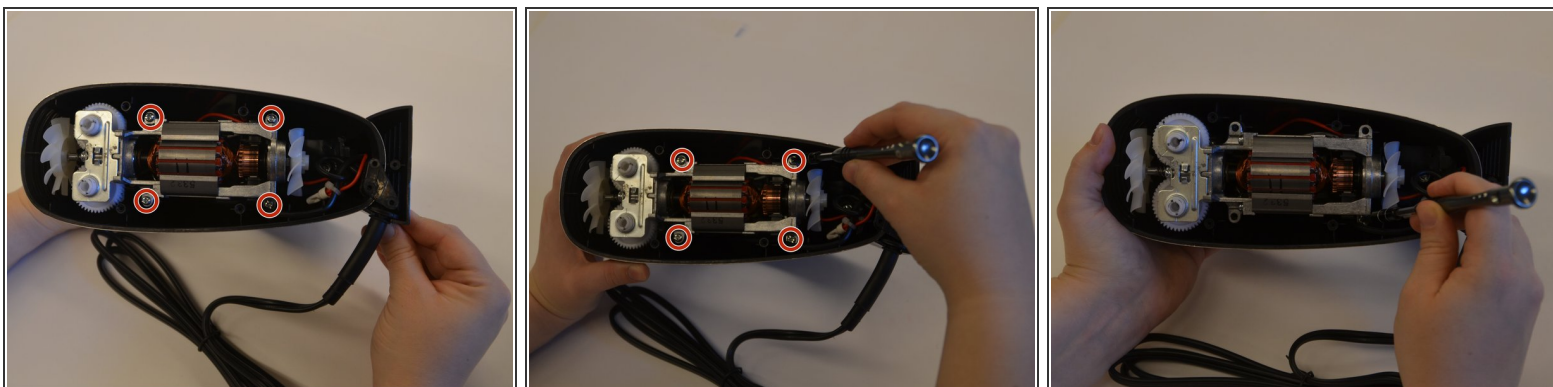
- [Phillips #2 Screwdriver](#) (1)
 - [Soldering Iron](#) (1)
 - [Solder](#) (1)
 - [iFixit Opening Tools](#) (1)
 - [Flush Wire Cutters](#) (1)
-

Step 1 — Motor



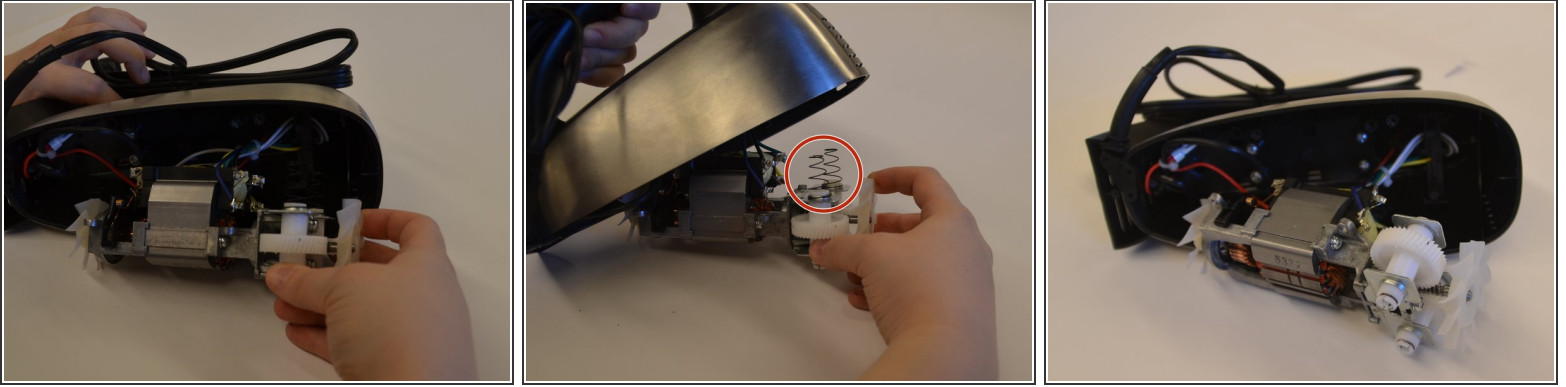
- Flip the handle on its side. Remove five 3.8 mm Philips #2 screws shown and set aside them aside.

Step 2



- Remove the four 8.6 mm Philips #2 screws securing the motor mount and place them aside.

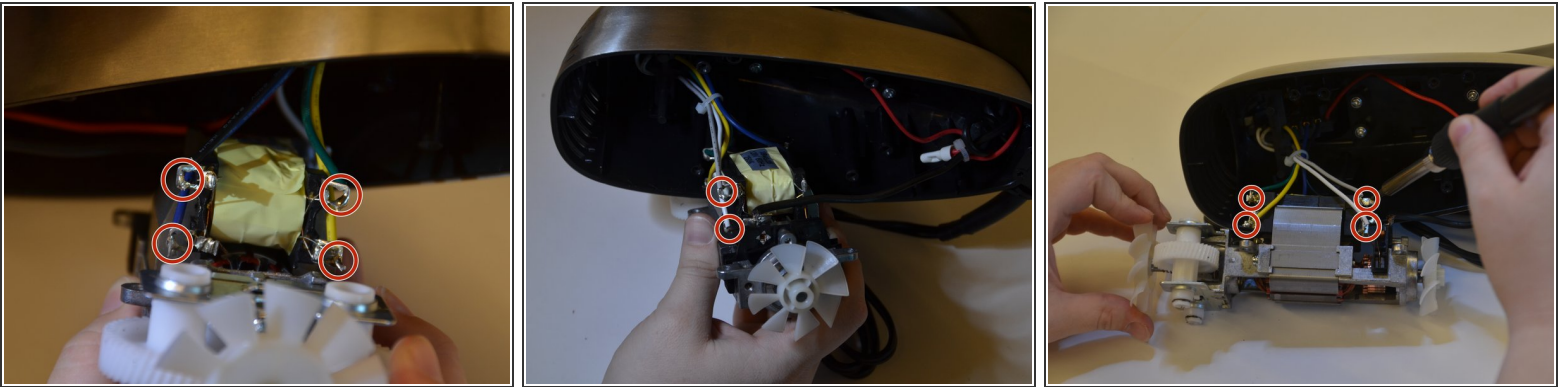
Step 3



- Carefully pull the motor block out of the case.
- Collect the two spring located on top of the white beater gears. The springs are held in place with compression, and may fall into the case when the motor is moved.

⚠ Handle the wires with care to ensure you do not break any of them.

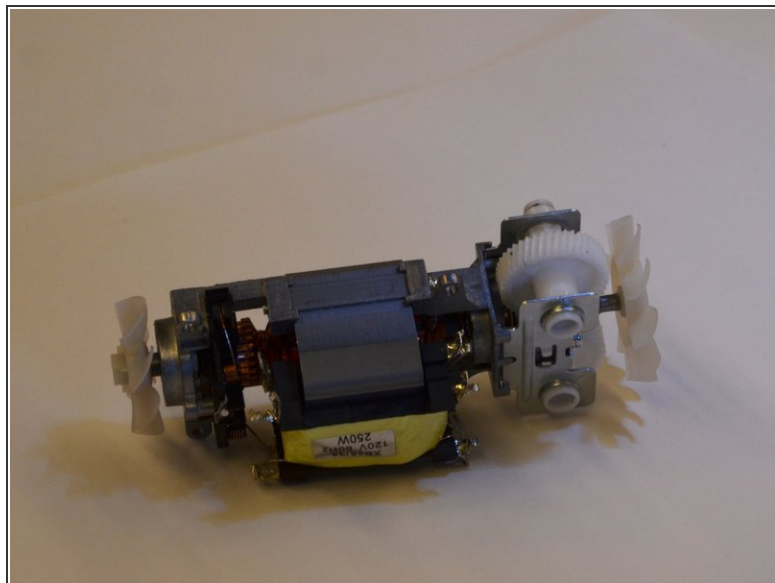
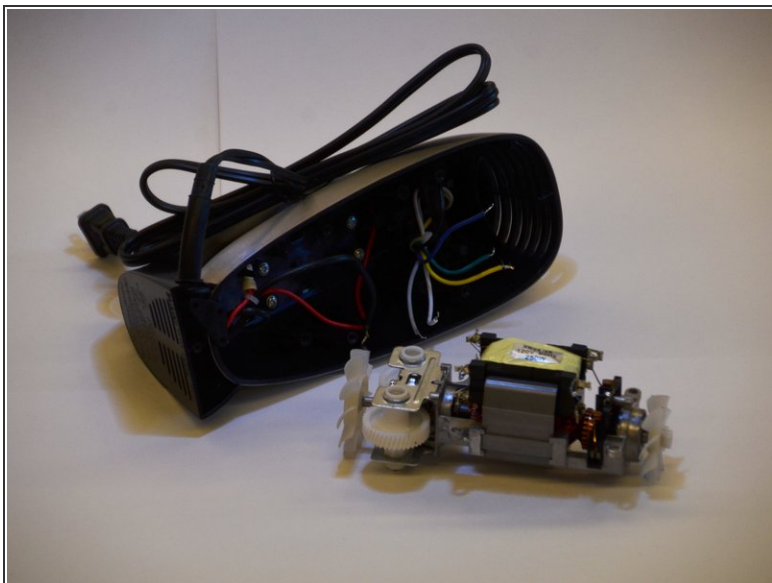
Step 4



- Desolder the six wires connected to the motor using [this guide](#).

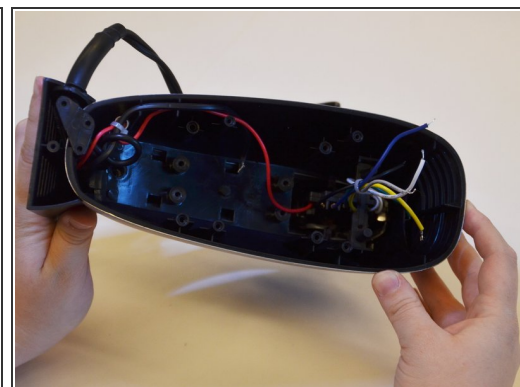
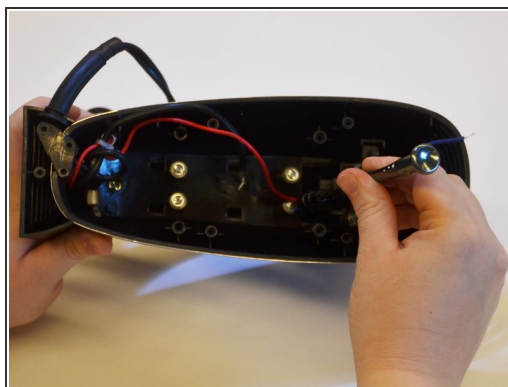
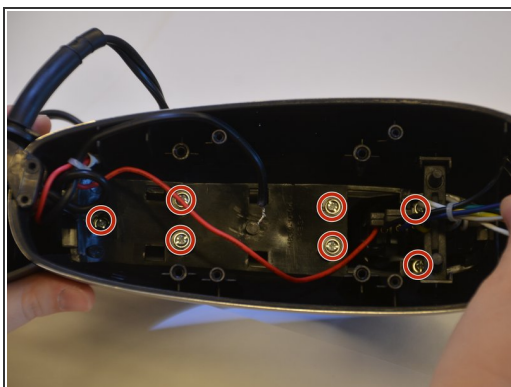
⚠ Make sure to note colors when you disconnect them and remember where to reconnect them later.

Step 5



- Once disconnected, the motor will slide out easily.

Step 6 — Speed Level



- Remove the seven 5.6 mm Philips #2 screws that attach the motor casing to the mixer handle and set them aside.

Step 7



- Use a plastic opening tool to take off the handle's cap by loosening both ends and then sliding the tool to the middle of the handle.

Step 8



- Remove the handle's cap carefully.

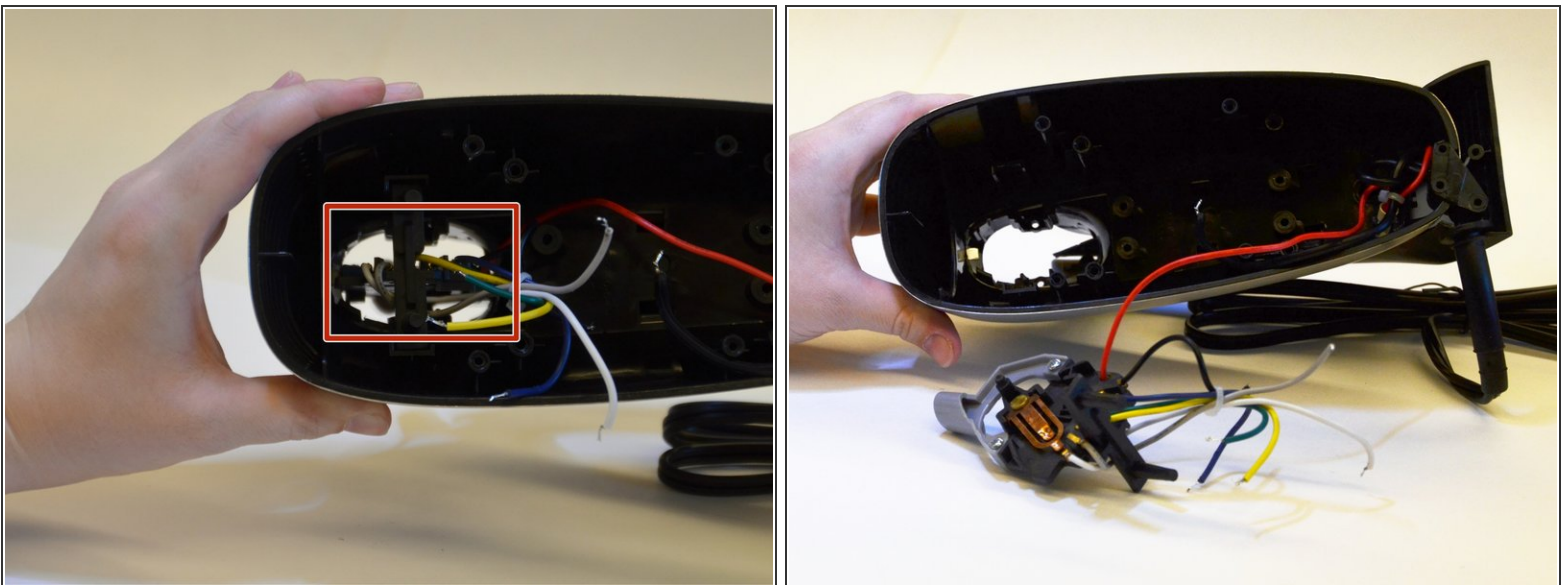
 Watch out for the quick burst button, it likes to run away.

Step 9



- Slide the speed switch forward and lift upward off of the handle.

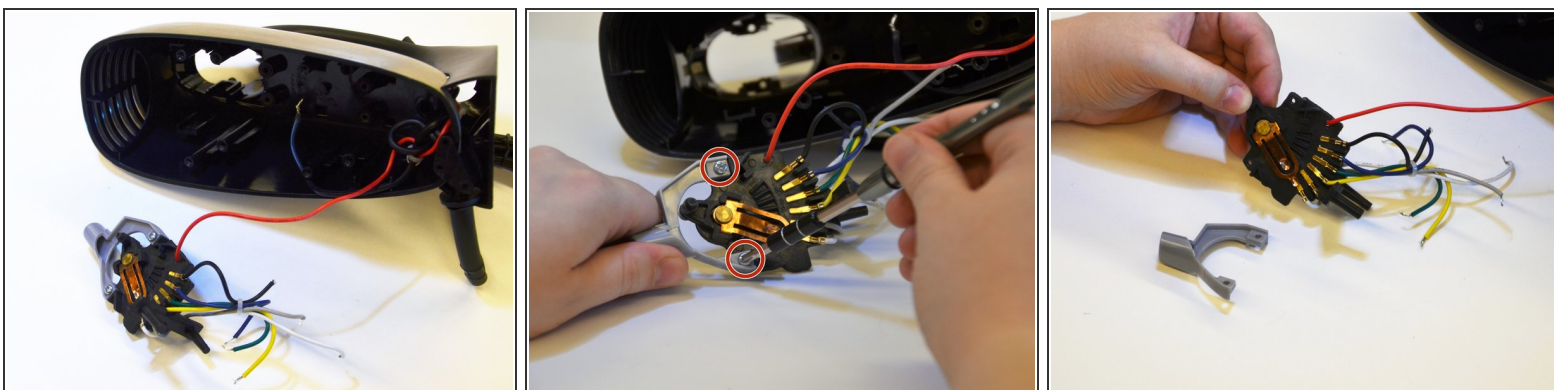
Step 10



- Remove speed level from the inside of the case by applying light pressure toward you.

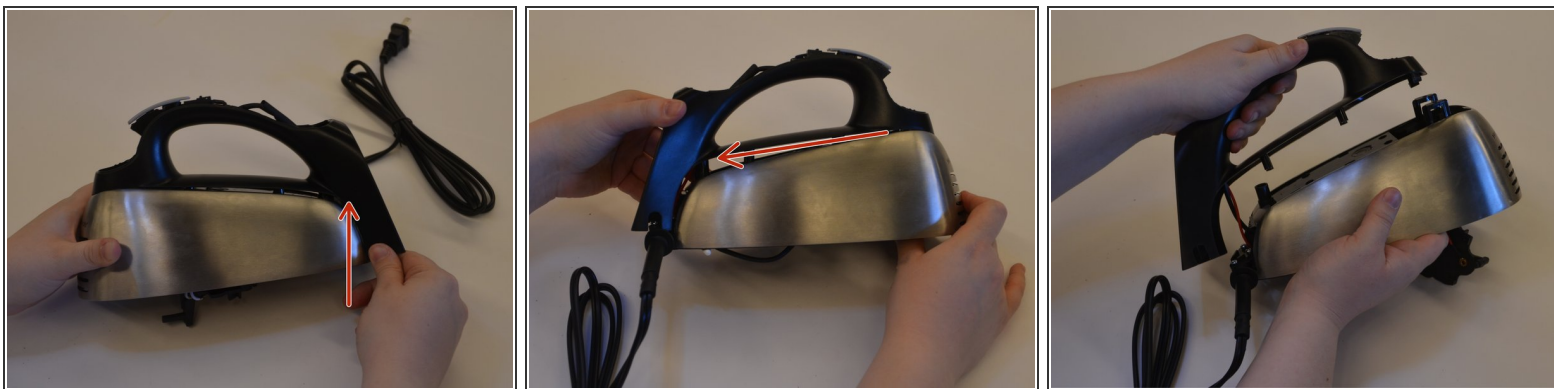
⚠ Do not pull on the wires to remove the speed level.

Step 11



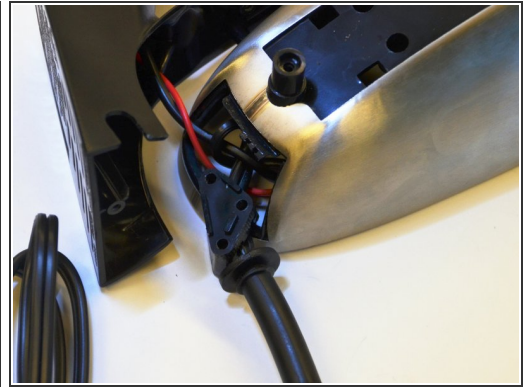
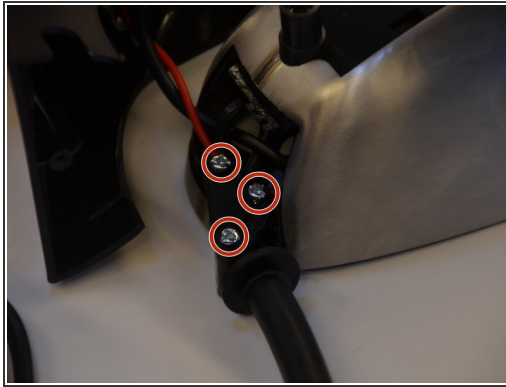
- Remove the beater release button from speed level by removing the two 1.3 mm Philips #2 screws.
- Replace the speed level assembly.

Step 12 — Power Cord



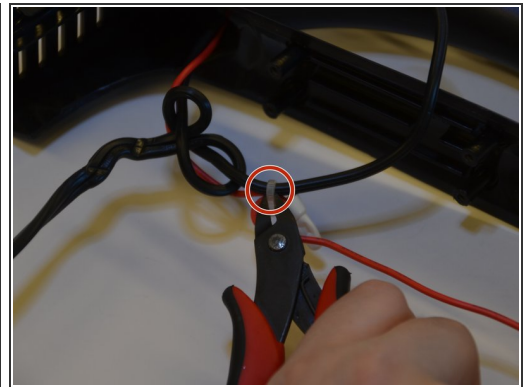
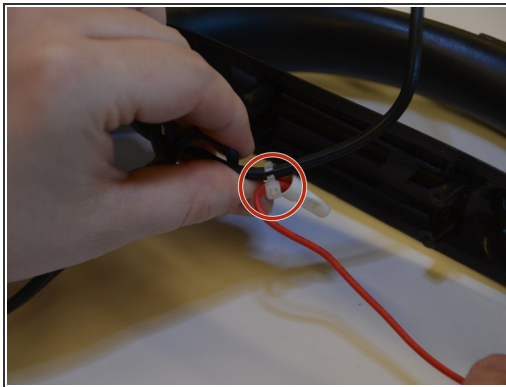
- Lift back end of the handle up from motor casing.
- Pull back to detach fully from the stainless steel.

Step 13



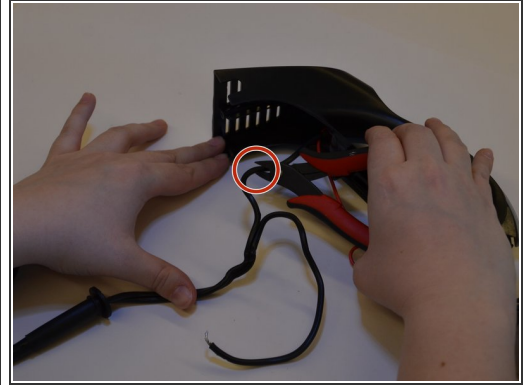
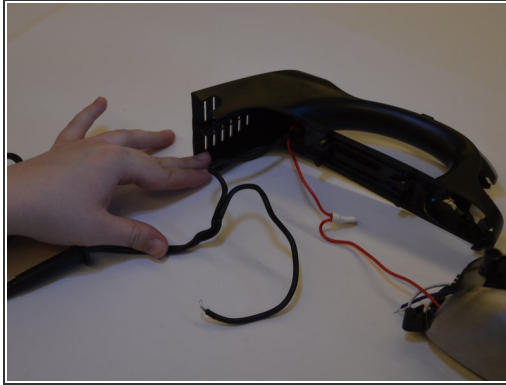
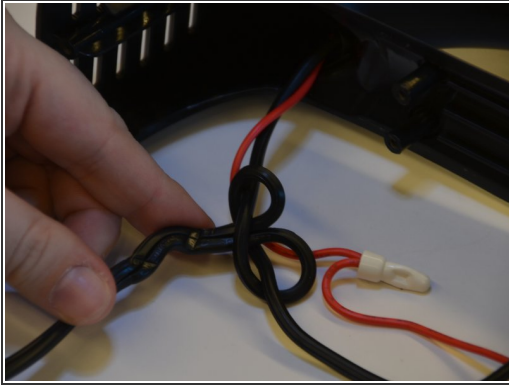
- Remove the three 7.8 mm Philips #2 screws holding the power cord in place.

Step 14



- Cut zip tie holding the power cable together using handheld wire cutters.

Step 15



- Untie the black lead's knot.
- Cut both wires with handheld wire cutters.
- Follow [this guide](#) to solder new power cord wires in.

To reassemble your device, follow these instructions in reverse order.